

05686 DMACA Indole Disks (Indol Detection Disks)

The DMACA Indole discs are used for Indole test to determine the ability of an organism to split tryptophan into indole and α -aminopropionic acid. The presence of indole can be detected by the addition of DMACA which results in a bluish-purple complex. With this method it is possible to differentiate *Escherichia coli* from Klebsiella.

Contents:

(1 package contains 50 disks)

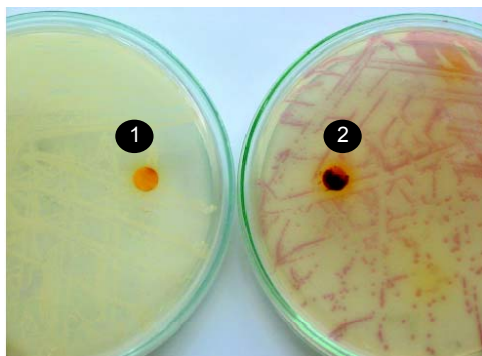
The disks contain p-Dimethylaminocinnamaldehyde (DMACA).

Directions:

Place the disk on suspected colony from e.g. HiCrome UTI Agar, modified (Fluka 16636) or Christensen's Urea Agar (Fluka 27048) plate on filter paper. Observe for appearance of blue-purple color within 10-30 seconds.

Quality control:

Test Organisms (ATCC)	DMACA
<i>Escherichia coli</i> (25922)	+
<i>Pseudomonas aeruginosa</i> (27853)	-
<i>Klebsiella pneumoniae</i> (13883)	-



1. *Staphylococcus aureus*
2. *Escherichia coli*

References:

1. R. Vracko, J.C. Sherris, Indole-spot test in bacteriology., Am. J. Clin. Pathol., 39, 429 (1963)
2. V.L. Sutter, W.T. Carter, Evaluation of media and reagents for indole-spot test in anaerobic bacteriology., Am. J. Clin. Pathol., 58, 335 (1972)
3. G.D. Fay, A.L. Barry, Methods for detecting indole production by gram-negative nonsporeforming anaerobes., Appl. Micro. 27, 562 (1974)
4. D.F. Welch, P.A. Ahlin, J.M. Matsen, Differentiation of Haemophilus spp. in respiratory isolate cultures by an indole spot test., J. Clin. Micro. 15, 216 (1982)
5. H.D. Isenberg, Ed., Clinical microbiology procedures handbook, Vol 1., Washington, DC, ASM (1992)
6. B.A. Forbes, D.F. Sahm, A.S. Weissfeld, Bailey and Scott's diagnostic microbiology., 10th ed., St Louis, Mosby (1998)
7. J.F. MacFaddin, Biochemical tests for identification of medical bacteria., 3rd ed., Philadelphia, Lippincott Williams & Wilkins (2000)