

多環芳香族炭化水素の詳細分析とスクリーニング分析(US EPA 8100)

Column : PTE-5, 30 m x 0.32 mm I.D., 0.25 μ m

Cat. No. : 24143

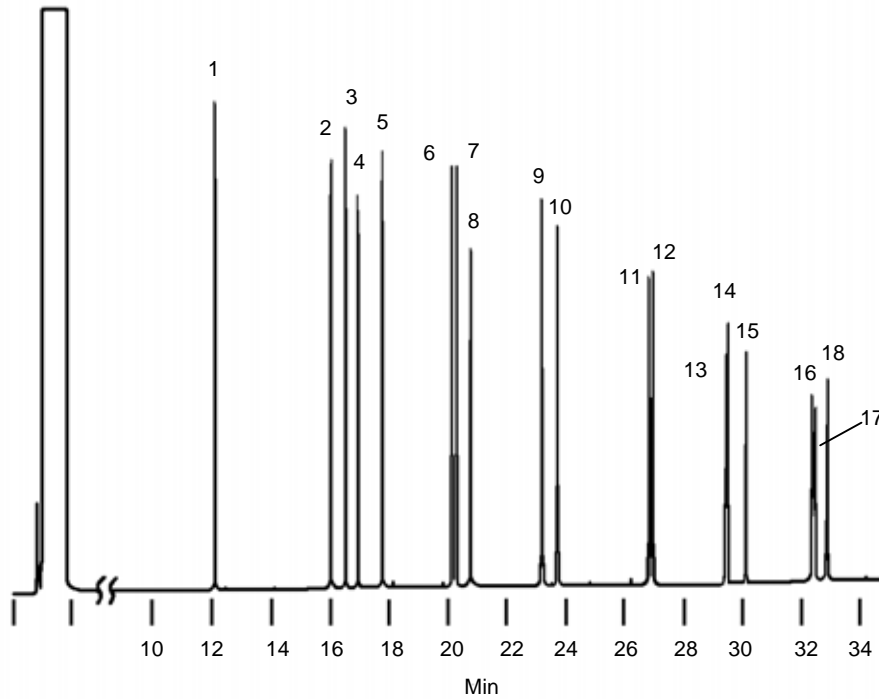
Oven: 35 (4 min.), 10 /min. to 320

Carrier gas : Helium, 40 cm/sec (set at 250)

Det.,: FID, 350

Injection : 1 μ L

Sample : 25ng each analyte in methylene chloride



1. Naphthalene
2. Acenaphthylene
3. Acenaphthene
4. Fluorene
5. Dibenzofuran
6. Phenanthrene
7. Anthracene
8. Carbazole
9. Fluoranthene
10. Pyrene
11. Benzo (a) anthracene
12. Chrysene
13. Benzo (b) fluoranthene
14. Benzo (k) fluoranthene
15. Benzo (a) pyrene
16. Indeno (1,2,3-cd) pyrene
17. Dibenzo (a,h) anthracene
18. Benzo (ghi) perylene

92-0021

Column : PTE-5 QTM, 15 m x 0.53 mm I.D., 0.5 μ m

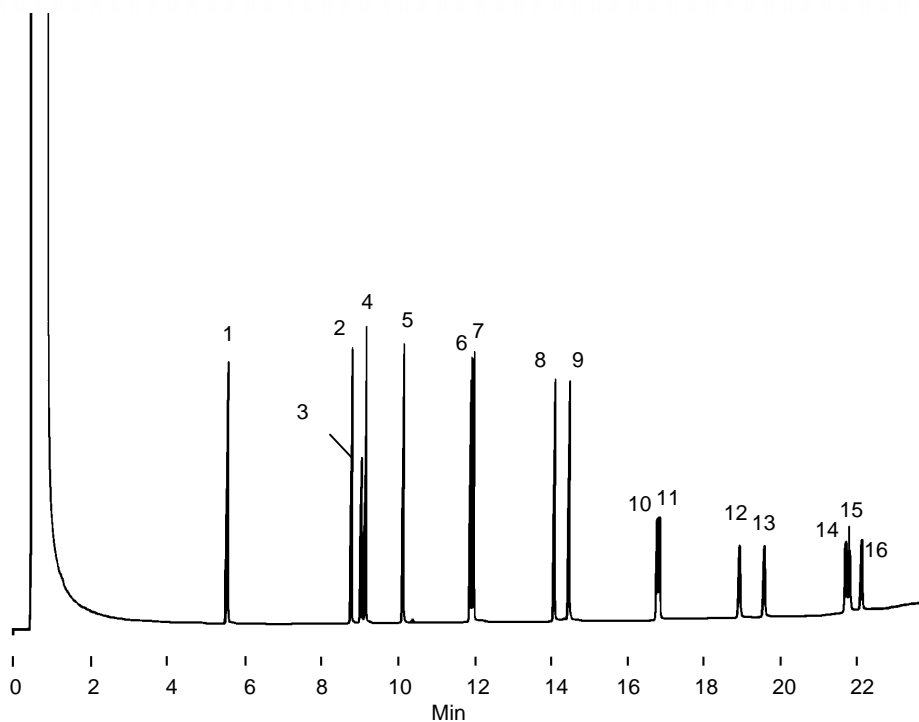
Cat. No. : 25355

Oven: 75 (3 min.), 12 /min. to 250 (1 min), 10 /min to 300

Carrier gas : Helium, 6.5 cc/min

Det.,: FID, 325

Inj.: 1 μ L QTM PAH Mix (10-20 μ g/mL each analyte), direct injection



1. Naphthalene
2. Acenaphthylene
3. 2-Bromonaphthalene (SMC)
4. Acenaphthylene
5. Fluorene
6. Phenanthrene
7. Anthracene
8. Fluoranthene
9. Pyrene
10. Benzo (a) anthracene
11. Chrysene
12. Benzo (b) fluoranthene
13. Benzo (a) pyrene
14. Indeno (1,2,3-cd) pyrene
15. Dibenzo (a,h) anthracene
16. Benzo (ghi) perylene

713-1041

八口酢酸 – US EPA Method. 552.2 八口酢酸(メチル化)

Column : PTE-5, 30 m x 0.25 mm ID, 0.25 µm film

Cat. No. : 24135-U

Oven: 50 (10 min.), 10 /min. to 200

Inj.: 200

Carrier gas: Helium, 25 cm/sec

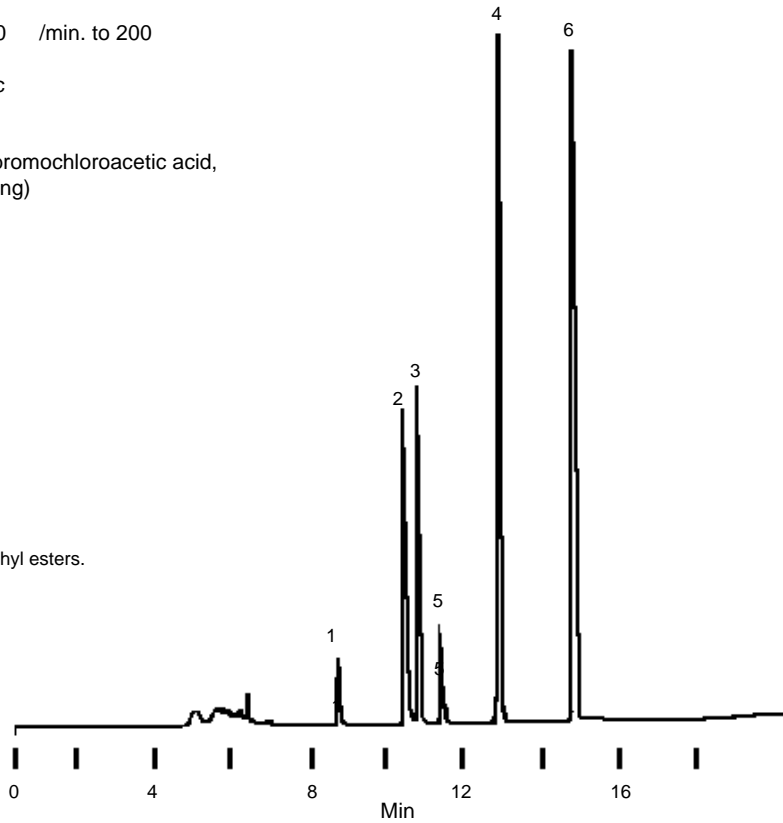
Det.: ECD, 300

Injection : 1 µL, Splitless, 200

Sample : MTBE (~0.02 ng bromochloroacetic acid,
other analytes 0.2 ng)

1. Chloroacetic acid m.e.*
2. Bromoacetic acid m.e.
3. Dichloroacetic acid m.e.
4. Trichloroacetic acid m.e.
5. Bromochloroacetic acid m.e.
6. Dibromoacetic acid m.e.

*Compounds analyzed as
diazomethane-derivatized methyl esters.



712-0129

八口酢酸 - US EPA Method 552.2 八口酢酸(メチル化)

Column : Equity-1701, 30 m x 0.25 mm ID, 0.25 mm

Cat. No. : 28372-U

Oven: 40 (10 min), 5 /min to 75 (5 min),

10 /min to 150 (5 min)

Inj.: 200

Det.: ECD, 260

Carrier gas: Helium, 25 cm/sec @ 35

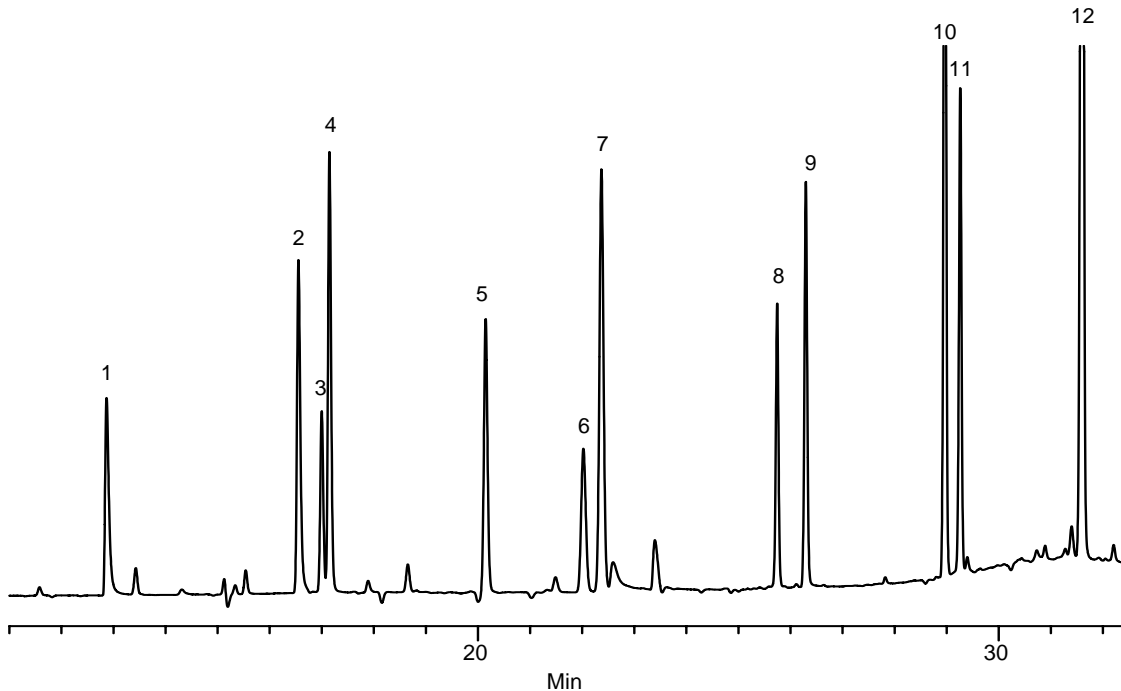
Injection : 2 µL, splitless (0.5 min)

Liner : 4 mm ID single taper

Sample : 12 component mix, 30-200 ppb in MTBE
(Cat. No.: 4-7788, 46970-U, 47663-U, 47669-U)

1. Monochloroacetic acid (MCAA)
2. Monobromoacetic acid (MBAA)
3. Dalapon
4. Dichloroacetic acid (DCAA)
5. Trichloroacetic acid (TCAA)
6. 1,2,3-Trichloropropane (internal standard)
7. Bromochloroacetic acid (BCAA)
8. Bromodichloroacetic acid (BDCAA)
9. Dibromoacetic acid (DBAA)
10. Chlorodibromoacetic acid (CDBAA)
11. 2,3-Dibromopropionic acid (surrogate)
12. Tribromoacetic acid (TBAA)

(all compounds except internal standard were methylated)

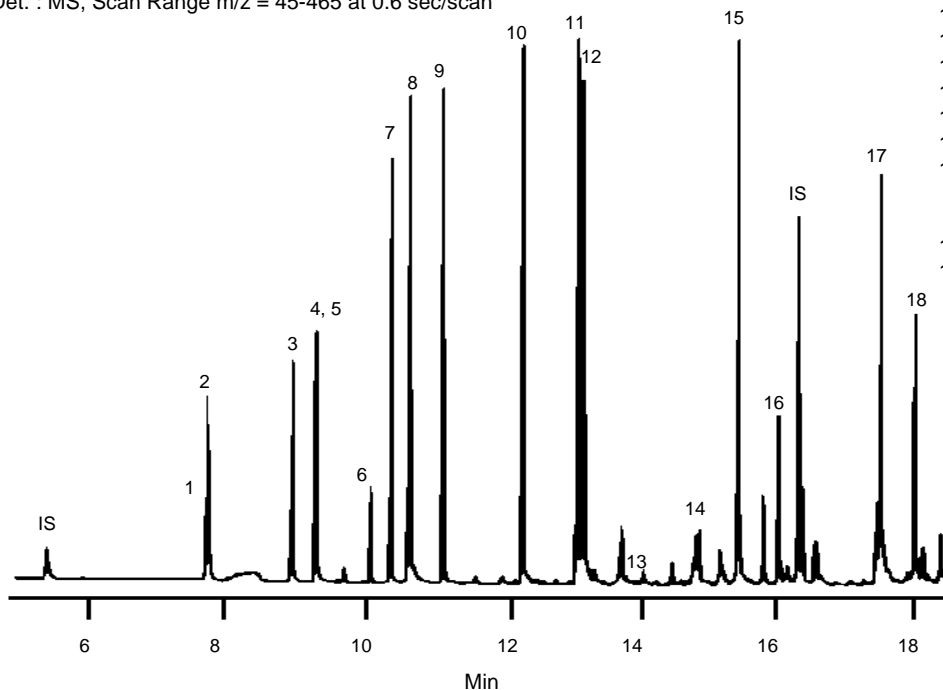


G002007

フェノール類 – SPME(水中)

Sample: 50ppb phenols in 1.8mL saturated salt water, pH 2
Extraction: 20 min immersed in ware with rapid stirring
SPME Fiber: polyacrylate, 85 μ m film
Cat. No.: 57304
Desorption: 500 μ L isoocane
Column: PTE-5, 30 m x 0.25 mm I.D., 0.25 μ m
Cat. No.: 24135-U
Oven: 40 (4 min.), 12 /min. to 260
Carrier gas: Helium, 40 cm/sec at 40
Det.: MS, Scan Range m/z = 45-465 at 0.6 sec/scan

- IS 2-Fluorophenol (int. std.)
- 1. Phenol
- 2. 2-Chlorophenol
- 3. 2-Methylphenol
- 4. 3-Methylphenol
- 5. 4-Methylphenol
- 6. 2-Nitrophenol
- 7. 2, 4-Dimethylphenol
- 8. 2, 4-Dichlorophenol
- 9. 2, 6-Dichlorophenol
- 10. 4-Chloro-3-methylphenol
- 11. 2, 4, 5-Trichlorophenol
- 12. 2, 4, 6-Trichlorophenol
- 13. 2, 4-Dinitrophenol
- 14. 4-Nitrophenol
- 15. 2, 3, 4, 6-Tetrachlorophenol
- 16. 2-Methyl-4, 6-dinitrophenol
- IS 2, 4, 6-Tribromophenol (int. std.)
- 17. Pentachlorophenol
- 18. Dinoseb



溶媒 - 工業溶媒

Column : PTE - 5, 30 m x 0.32 mm ID, 1.0 µm film

Cat. No. : 24159

Oven: 40 (5 min.), 4 /min to 130

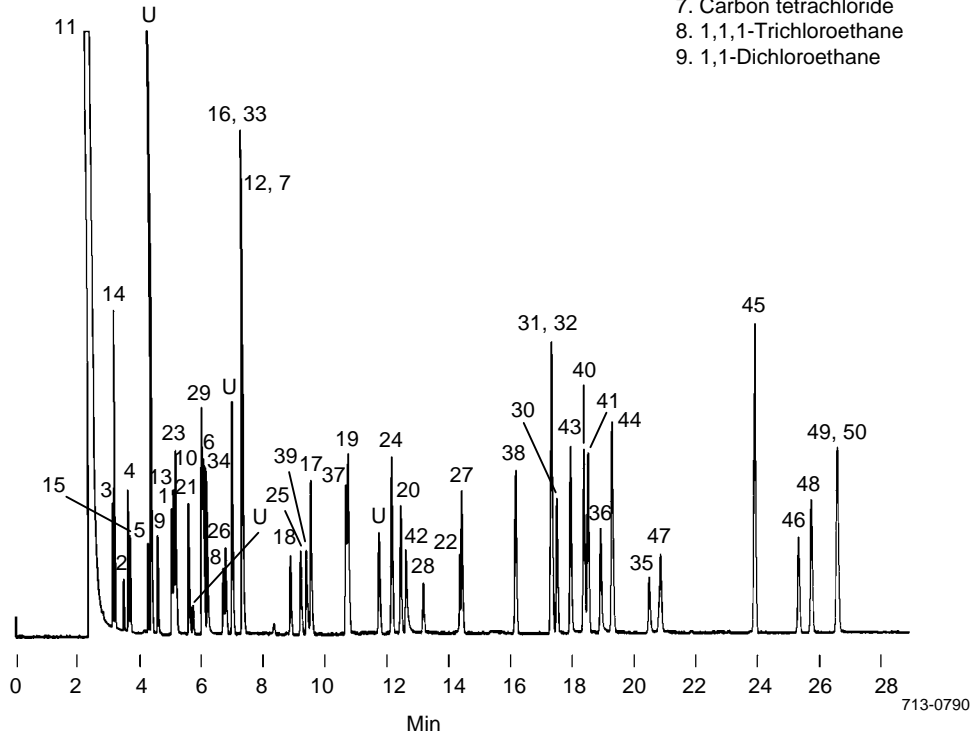
Inj.: 200

Carrier gas: Helium, 20 cm/sec @ 135

Det.: FID

Inj.: 1 µL, split 100 : 1

Sample : mixed solvents



- | | |
|-------------------------------|-------------------------------|
| 1. Hexane | 10. Ethyl acetate |
| 2. 1,1-Dichloroethylene | 11. Methanol |
| 3. Acetone | 12. Isopropyl acetate |
| 4. Methyl acetate | 13. Methyl ethyl ketone |
| 5. trans-1,2-Dichloroethylene | 14. Isopropanol |
| 6. Tetrahydrofuran | 15. Methylene chloride |
| 7. Carbon tetrachloride | 16. Benzene |
| 8. 1,1,1-Trichloroethane | 17. Propyl acetate |
| 9. 1,1-Dichloroethane | 18. Trichloroethylene |
| | 19. Methyl isobutyl ketone |
| | 20. Isobutyl acetate |
| | 21. Chloroform |
| | 22. Tetrachloroethylene |
| | 23. 2-Butanol |
| | 24. Toluene |
| | 25. 1,4-Dioxane |
| | 26. 1,2-Dichloroethane |
| | 27. n-Butyl acetate |
| | 28. 2-Hexanone (MBK) |
| | 29. Isobutanol |
| | 30. Isoamyl acetate |
| | 31. p-Xylene |
| | 32. m-Xylene |
| | 33. 1-Butanol |
| | 34. Methyl Cellosolve |
| | 35. Amyl acetate |
| | 36. o-Xylene |
| | 37. Isoamyl alcohol |
| | 38. Chlorobenzene |
| | 39. Cellosolve |
| | 40. Styrene |
| | 41. Cyclohexanone |
| | 42. N,N-Dimethylformamide |
| | 43. Cyclohexanol |
| | 44. Butyl Cellosolve |
| | 45. 2-Methylcyclohexanol |
| | 46. 1,2-Dichlorobenzene |
| | 47. 1,1,2,2-Tetrachloroethane |
| | 48. o-Cresol |
| | 49. p-Cresol |
| | 50. m-Cresol |

713-0790