

硫黄化合物

Column : SPB-SULFUR, 30 m x 0.32 mm ID, 4 µm film

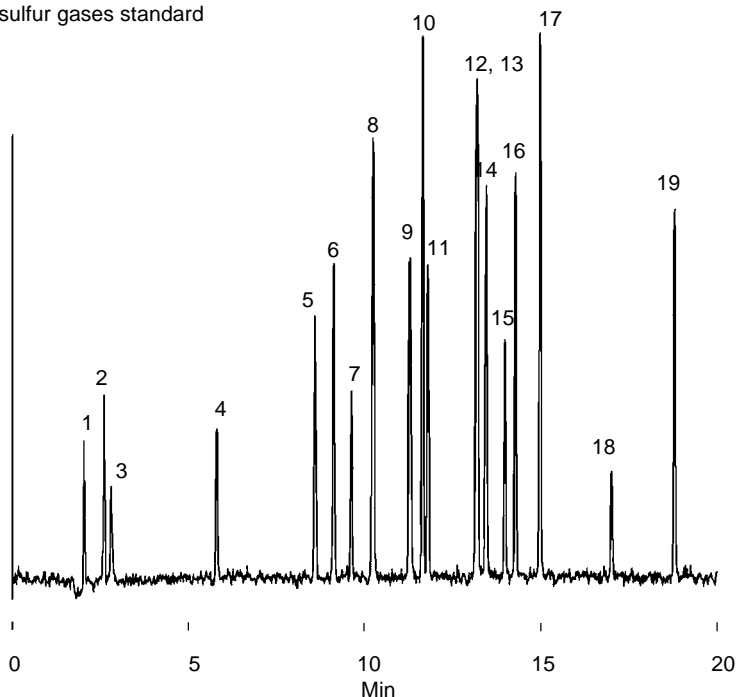
Cat. No. : 24158

Oven : -10 (3min.), 10 /min. to 300

Det. : sulfur chemiluminescence

Injection : 0.1 mL, split 10 : 1

Sample : sulfur gases standard



Compound (pg)	Sulfur Content
1. Hydrogen sulfide	107
2. Carbonyl sulfide	107
3. Sulfur dioxide	107
4. Methanethiol	200
5. Ethanethiol	217
6. Dimethylsulfide	219
7. Carbon disulfide	125
8. Isopropanethiol	343
9.tert-Butanethiol	285
10. n-Propanethiol	354
11. Methylethylsulfide	177
12. Thiophene	200
13. sec-Butanethiol	295
14. Isobutanethiol	297
15. Diethylsulfide	149
16. n-Butanethiol	299
17. Dimethyl disulfide	352
18. 2-Ethylthiophene	80
19. Diethyldisulfide	260

硫黄化合物 – 天然ガス

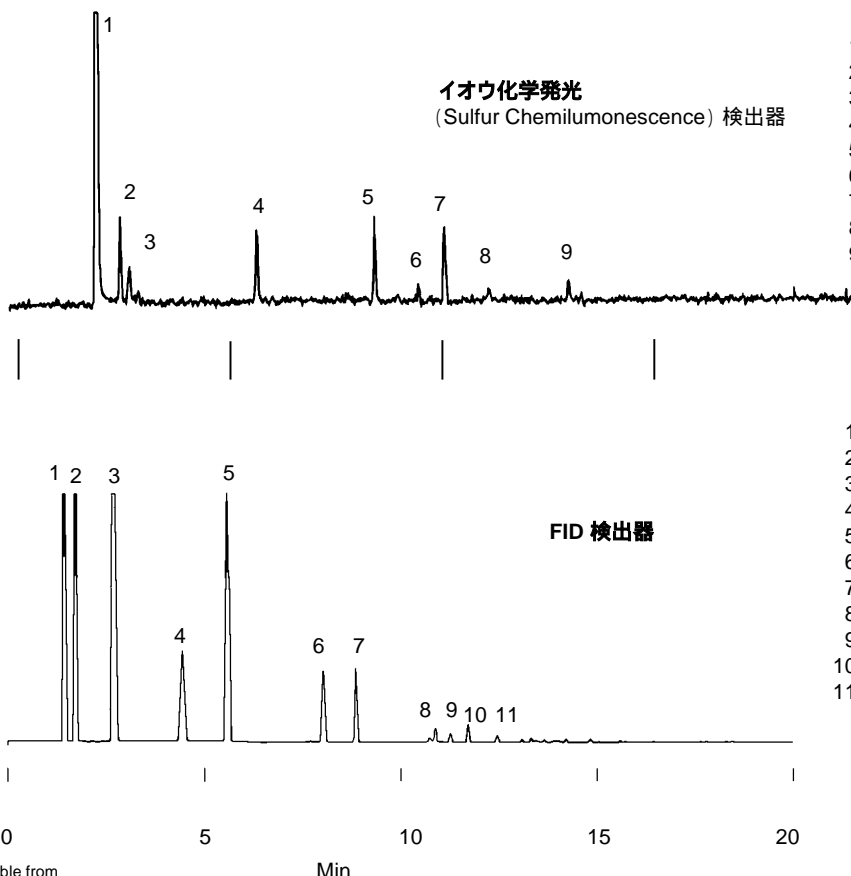
Column : SPB-1 SULFUR, 30 m x 0.32 mm ID, 4 µm film

Cat. No. : 24158

Oven : -10 (3min.), 12 /min. to 300

Det. : FID/SDC

Injection : 2.0 µL liquid, split



1. Hydrogen sulfide
2. Carbonyl sulfide
3. Sulfur dioxide
4. Methanethiol
5. Ethanethiol
6. Carbon disulfide
7. i-Propanethiol
8. t-Butanethiol
9. s-Butanethiol

1. Methane
2. Ethane
3. Propane
4. i-Butane
5. n-Butane
6. i-Pentane
7. n-Pentane
8. 2-Methylpentane
9. 3-Methylpentane
10. n-Hexane
11. Methylcyclopentane

*Sulfur chemiluminescence detector available from Sievers Research, Inc., 1930 Central Avenue, Suite C, Boulder, Colorado, 80301 USA. Chromatograms provided by Sievers Research, Inc. For more information, request Bulletin 876.

燃料 - 自動車用ディーゼル燃料

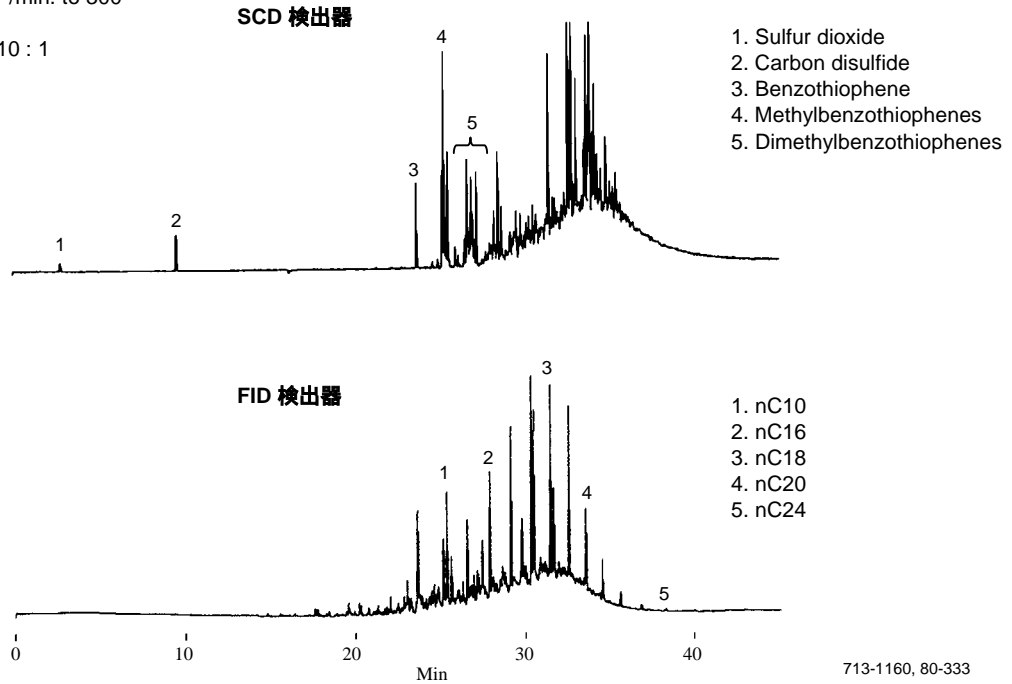
Column : SPB-1 SULFUR, 30 m 0.32 mm ID, 4 µm film

Cat. No. : 24158

Oven: -10 (3min.), 10 /min. to 300

Det.: FID/SCD

Injection : 2.0 µL liquid, split 10 : 1



アミン類 - 水中の低級アミン

Sample : Amines at 5 ppm in water, 27% NaCl, pH 9.5

SPME Fiber : polydimethylsiloxane/DVB, 65 µm film

Cat. No. : 57310-U

Extraction : 20 min, fiber immersed in water, rapid stirring

Desorption : 5 min, 270

Column : SPB-1 SULFUR, 30 m x 0.32 mm ID, 4.0 µm film

Cat. No. : 24158

Oven : 50 (2 min.), 10 /min. to 150

Inj. : 270

Det. : GC/MS, selected ions at 0.6 sec/scan

Carrier Gas : Helium, 25 cm/sec @ 50

Injection : Splitless/split, closed initial 5 min.

Liner : 0.75 mm ID, splitless

1. Methylamine
 2. Dimethylamine
 IS Isopropanol
 (Internal Standard)
 3. Diethylamine
 4. Triethylamine

