

揮発性化合物 – VOCs

Column : SPB-624, 60 m x 0.25 mm ID, 1.4 µm film

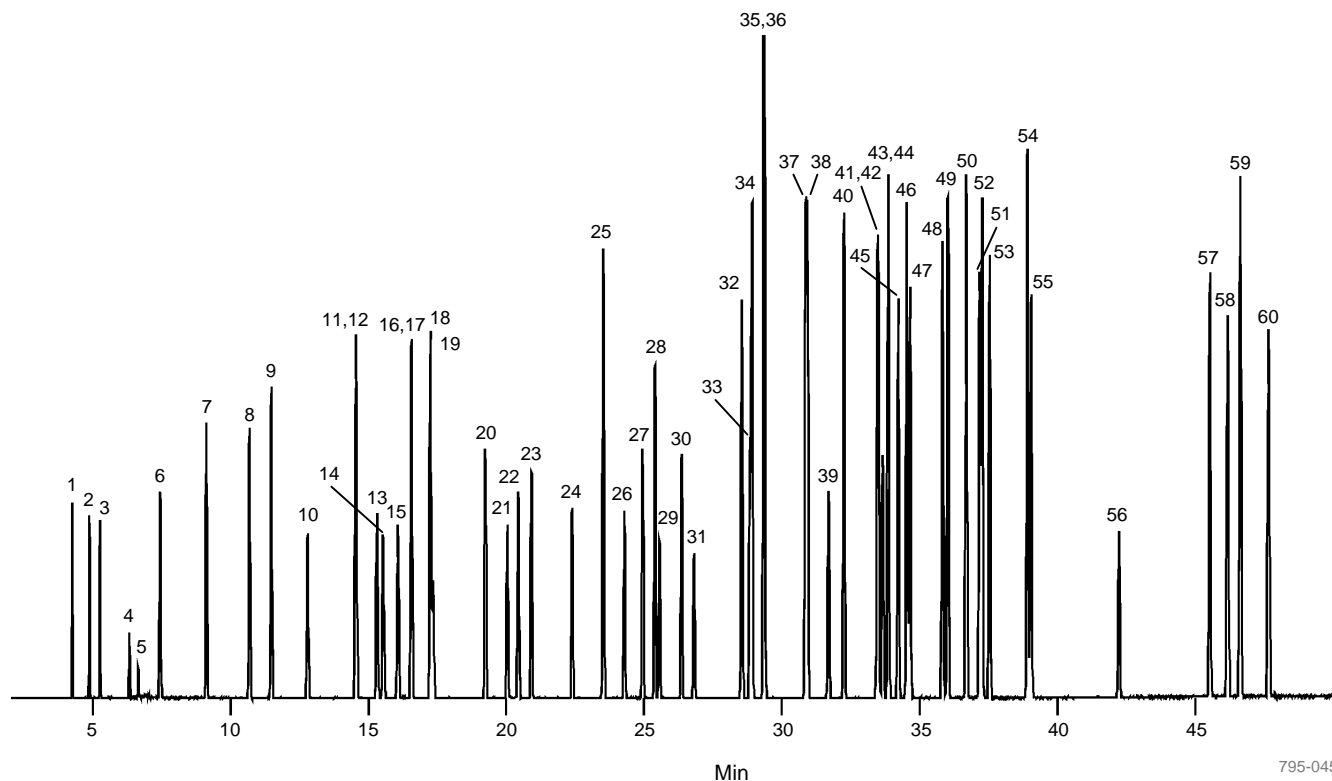
Cat. No. : 24256

Oven : 35 (4min.), 4 /min. to 200

Carrier gas: Helium, 33 cm/sec @ 40

Det.: MS (m/z =45 - 300)

Inj.: Split (70 : 1), 250 5 ng/component on column



795-0454

- | | | |
|-----------------------------|-------------------------------|---------------------------------|
| 1. Dichlorodifluoromethane | 21. 1,2-Dichloropropane | 41. 1,1,2,2-Tetrachloroethane |
| 2. Chloromethane | 22. Dibromomethane | 42. Bromobenzene |
| 3. Vinyl chloride | 23. Bromodichloromethane | 43. 1,2,3-Trichloropropane |
| 4. Bromomethane | 24. cis-1,3-Dichloropropene | 44. n-Propylbenzene |
| 5. Chloroethane | 25. Toluene | 45. 2-Chlorotoluene |
| 6. Trichlorofluoromethane | 26. trans-1,3-Dichloropropene | 46. 1,2,3-Trimethylbenzene |
| 7. 1,1-Dichloroethene | 27. 1,1,2-Trichloroethane | 47. 4-Chlorotoluene |
| 8. Methylene chloride | 28. Tetrachloroethene | 48. tert-Butylbenzene |
| 9. trans-1,2-Dichloroethene | 29. 1,3-Dichloropropane | 49. 1,2,4-Trimethylbenzene |
| 10. 1,1-Dichloroethane | 30. Dibromochloromethane | 50. sec-Butylbenzene |
| 11. 2,2-Dichloropropane | 31. 1,2-Dibromoethane | 51. 1,3-Dichlorobenzene |
| 12. cis-1,2-Dichloroethene | 32. Chlorobenzene | 52. p-Isopropyltoluene |
| 13. Bromochloromethane | 33. 1,1,1,2-Tetrachloroethane | 53. 1,4-Dichlorobenzene |
| 14. Chloroform | 34. Ethylbenzene | 54. n-Butylbenzene |
| 15. 1,1,1-Trichloroethane | 35. m-Xylene | 55. 1,2-Dichlorobenzene |
| 16. 1,1-Dichloropropene | 36. p-Xylene | 56. 1,2-Dibromo-3-chloropropane |
| 17. Carbon tetrachloride | 37. o-Xylene | 57. 1,2,4-Trichlorobenzene |
| 18. Benzene | 38. Styrene | 58. Hexachlorobutadiene |
| 19. 1,2-Dichloroethane | 39. Bromoform | 59. Naphthalene |
| 20. Trichloroethene | 40. Isopropylbenzene | 60. 1,2,3-Trichlorobenzene |

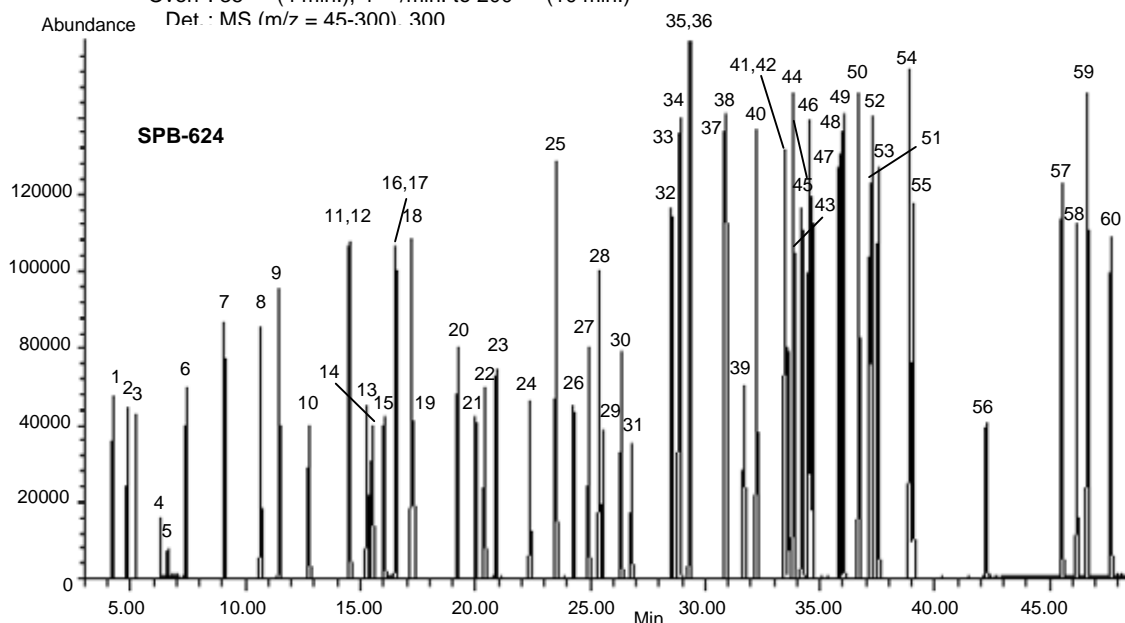
揮発性化合物 – 60種 VOCs 分離 (水中)

Column : SPB-624, 60 m x 0.25 mm ID, 1.4 µm film
 VOCOL, 60 m x 0.25 mm ID, 1.5 µm film
 SPB-Octyl, 60 m x 0.25 mm ID, 1.0 µm film

Cat. No. : 24256
 Cat. No. : 24154
 Cat. No. : 24233-U

Oven : 35 (4 min.), 4 /min. to 200 (10 min.)

Det : MS (m/z = 45-300) 300



1. Dichlorodifluoromethane
2. Chloromethane
3. Vinyl chloride
4. Bromomethane
5. Chloroethane
6. Trichlorofluoromethane
7. 1,1-Dichloroethene
8. Methylene chloride
9. trans-1,2-Dichloroethene
10. 1,1,-Dichloroethane
11. 2,2-Dichloropropane
12. cis-1,2-Dichloroethene
13. Bromochloromethane
14. Chloroform
15. 1,1,1-Trichloroethane
16. 1,1-Dichloropropene
17. Carbon tetrachloride
18. Benzene
19. 1,2-Dichloroethane
20. Trichloroethene
21. 1,2-Dichloropropane
22. Dibromomethane
23. Bromodichloromethane
24. cis-1,3-Dichloropropene
25. Toluene
26. trans-1,3-Dichloropropene
27. 1,1,2-Trichloroethane
28. Tetrachloroethene
29. 1,3-Dichloropropane
30. Dibromochloromethane
31. 1,2-Dibromoethane
32. Chlorobenzene
33. 1,1,1,2-Tetrachloroethane
34. Ethylbenzene
35. m-Xylene
36. p-Xylene
37. o-Xylene
38. Styrene
39. Bromoform
40. Isopropylbenzene
41. 1,1,2,2-Tetrachloroethane
42. Bromobenzene
43. 1,2,3-Trichloropropane
44. n-Propylbenzene
45. 2-Chlorotoluene
46. 1,3,5-Trimethylbenzene
47. 4-Chlorotoluene
48. tert-Butylbenzene
49. 1,2,4-Trimethylbenzene
50. sec-Butylbenzene
51. 1,3-Dichlorobenzene
52. p-Isopropyltoluene
53. 1,4-Dichlorobenzene
54. n-Butylbenzene
55. 1,2-Dichlorobenzene
56. 1,2-Dibromo-3-chloropropane
57. 1,2,4-Trichlorobenzene
58. Hexachlorobutadiene
59. Naphthalene
60. 1,2,3-Trichlorobenzene

