

TCEPキャピラリーカラムによるASTM D3257標準混合品分離

Column : TCEP, 60m x 0.25mm ID, 0.44 μm film

Cat. No. : 24153

Oven : 110

Inj. : 220

Det. : FID, 230

Carrier gas : Helium, 20cm/sec, at 110

Injection : 1.0 μL, split (100:1)

1. Iso-Octane
2. Tridecane(nC13)
3. Toluene
4. Ethylbenzene
5. P-Xylene
6. Cumene
7. Pseudocumene
8. Durene
9. Cyclohexanone

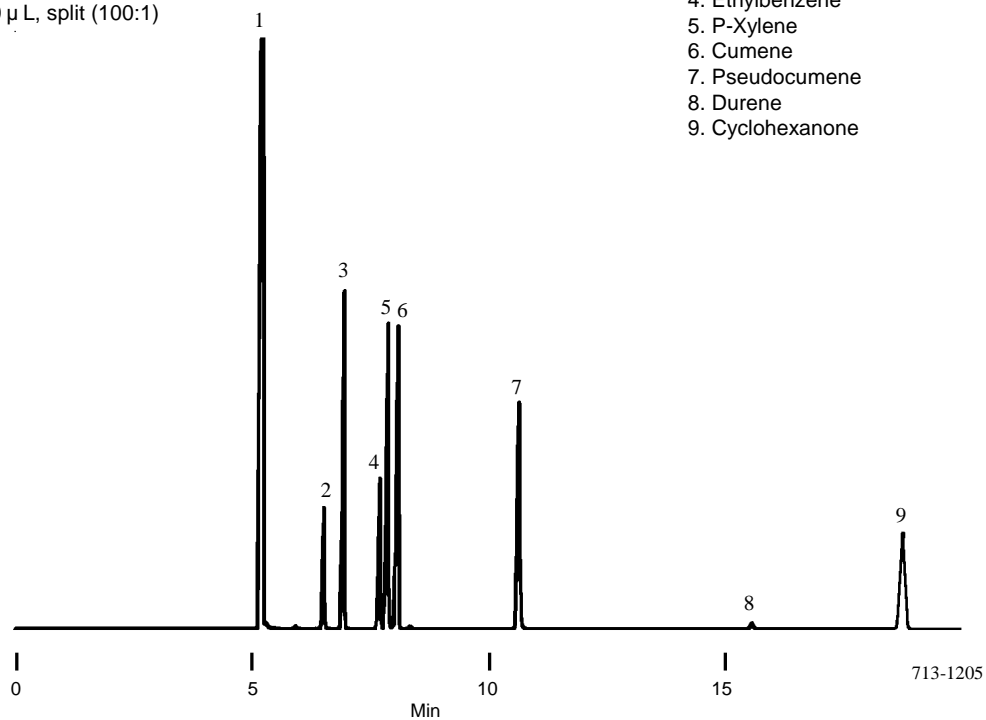
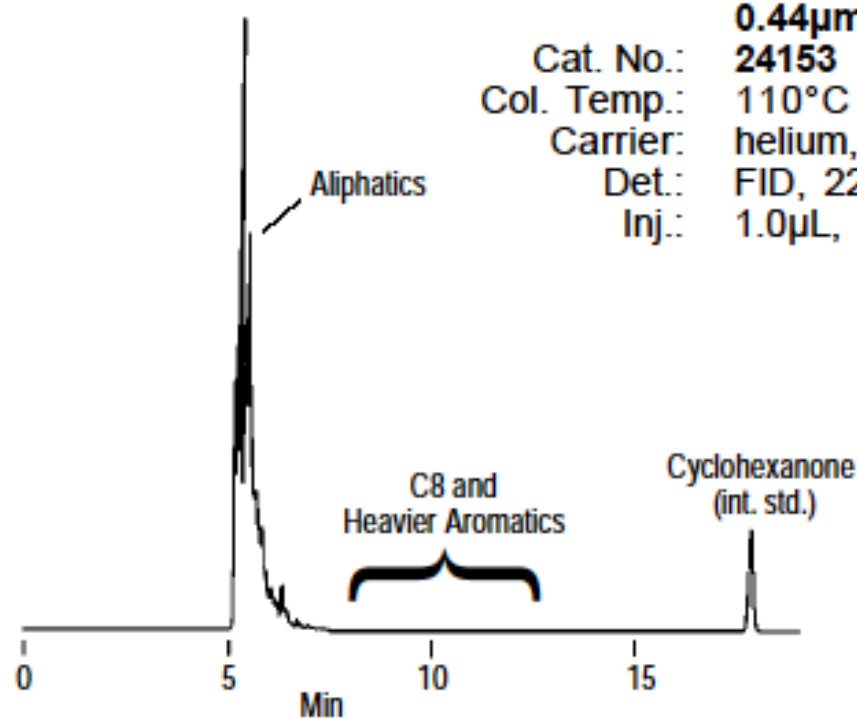


Figure B. Super High Flash Naphtha Aromatics in Mineral Spirits

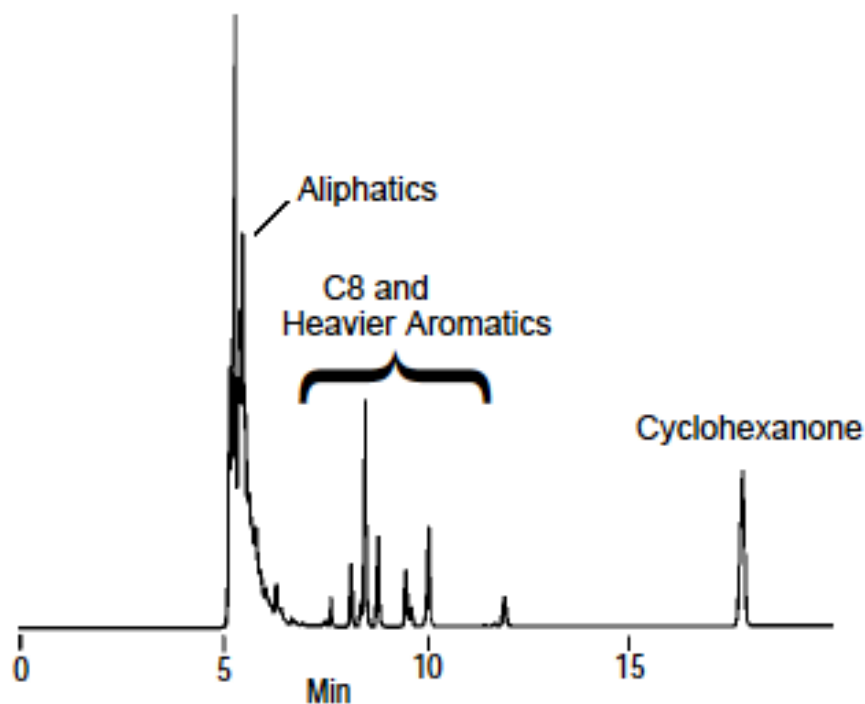
0% SHFN Aromatics

Column: TCEP, 60m x 0.25mm ID,
0.44 μ m film
Cat. No.: 24153
Col. Temp.: 110°C
Carrier: helium, 20cm/sec.
Det.: FID, 220°C
Inj.: 1.0 μ L, split (100:1), 220°C



713-1206

20% SHFN Aromatics



713-1209