

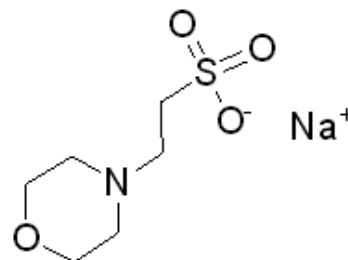
Specification Comparison

MES Sodium salt

Sigma-Aldrich® MES Sodium Salt Physical Properties

Synonyms

2-(N-Morpholino)ethanesulfonic acid sodium salt
 4-Morpholineethanesulfonic acid sodium salt



Molecular Formula	C ₆ H ₁₂ NNaO ₄ S	Beilstein Registry	3765682	Useful pH range	5.5 - 6.7
Molecular Weight	217.22	MDL Number	MFCD00065473	pKa (at 25)	6.1
CAS Number	71119-23-8	EG/EC Number	275-203-2		

Sigma-Aldrich MES Sodium Salt Specifications Comparison

	M3885	M5057	M3058
Grade	≥99% (titration)	BioReagent, ≥99% (titration)	BioReagent, for cell culture, for molecular biology
Purity	≥99%	≥99%	≥99%

Reagent Testing

	M3885	M5057	M3058
Enhanced Quality Profile Buffers	X	X	X
260NM		<0.05	<0.05
280NM		<0.03	<0.03
290NM	≤0.1	≤0.1	≤0.1
IR		X	X
pH		8.9 - 10.1	8.9 - 10.1
Karl Fischer	≤8%	≤8%	≤8%

Life Science Testing

	M3885	M5057	M3058
Synthetic		X	
Endotoxin			≤0.1 eu/mg
SPC			≤100 cfu/g
Cell test			X
RNAse			X
DNase			X
Nickase			X
Protease			X
Lead(Pb)	≤0.0005%	≤0.0005%	≤0.0005%