

# Sigma-Aldrich 2009 Histotechnology Contest Entry Form

Please complete a form for each slide entry.

---

\_\_\_\_ Hematoxylin and Eosin Category

\_\_\_\_ Special Stain (or IHC) Category

Name of Participant: \_\_\_\_\_

Telephone Number: \_\_\_\_\_ E-mail Address: \_\_\_\_\_

Mailing Address: \_\_\_\_\_

Description or legend for entry. \_\_\_\_\_

**Please identify slide label** \_\_\_\_\_

I have read the official rules and agree to abide by them for the purpose of this contest. All entries become the property of Sigma-Aldrich and will not be returned to entrant. Submission of an entry shall constitute the grant of a non-exclusive, royalty free license to Sigma-Aldrich to photograph and utilize for any purpose, including but not limited to publication on the WWW and/or use for marketing publications. I am the owner of the accompanying slide and hold all rights therein.

**Signature:** \_\_\_\_\_

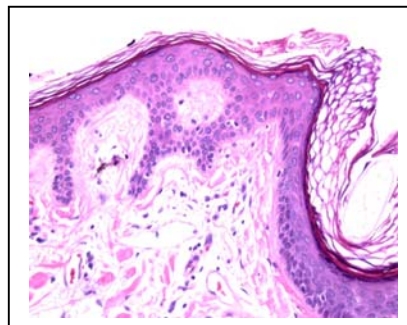
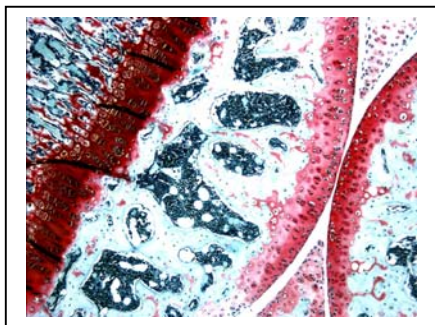
Please e-mail all entries [Mark.Frei@sial.com](mailto:Mark.Frei@sial.com)

OR Mail To:

Sigma-Aldrich, Attn: Mark Frei, 3050 Spruce Street, St. Louis, MO 63103.

**Entries must be emailed or postmarked no later than September 4, 2009.**

## Sigma-Aldrich® Histotechnology Stain Contest!



We invite you to submit your favorite entries in our bi-annual stain contest. The histotechnology stain contest is sponsored with the intention of encouraging interest in the field of pathology and the science of staining. All entries will be judged and first place winners will receive an award certificate with a \$200 giftcard. Contest winners will be announced October 2, 2009, and pictures of the winning entries will be posted on the Sigma-Aldrich website.

### Rules of the Competition and Conditions of Entry

1. The competition is open to everyone worldwide.
2. In addition to slide entries, digital photos will now be acceptable. Images should be at least 300 dpi. Cropping by computer is permitted, but photos believed to be altered or have colors enhanced digitally will be eliminated.
3. Entries must conform to one of two stain contest categories:
  - Hematoxylin and Eosin stains
  - Special Stains (including IHC stains)
4. The entries will be judged on; clarity of presentation, composition, proper structure relationships, stain quality and scientific interest.
5. Win one of the following prizes for each category:
  - First Place:** \$200 (USD)
  - Second Place:** \$100 (USD)
  - Third Place:** \$50 (USD)
6. Eligibility: This contest is open to persons who are at least 18 years of age at the time of entry. Sigma-Aldrich employees and their immediate family members are not eligible. Individuals may submit as many slides per category as they like.
7. How to enter: There is no entry fee, but each entry must be accompanied by a completed Contest Entry Form. If you are submitting multiple entries, be sure to indicate clearly which form belongs with each entry. Entries received incomplete or not complying with the instructions may be disqualified.
- 8. Deadline: Entries must be postmarked or emailed no later than Friday, September 4, 2009.**
9. Winners: In a blind review, a panel of 3 judges will select a first, second and third place winning entries for each of the contest categories. Results of the Histotechnology Contest will be announced October 2, 2009, and posted on the Sigma-Aldrich website. Winners will also be notified by email or by phone.
10. Additional Terms and Conditions: Contest entrants agree to abide by the terms of these rules and by the decisions of the judges. No responsibility is assumed by Sigma-Aldrich for lost, late, illegible or damaged entries. All entries become the property of Sigma-Aldrich and will not be returned to entrant. By entering the contest, entrants agree to have their entries displayed by Sigma-Aldrich without any fee or other form of compensation. By participating in this contest, you agree to release and hold harmless Sigma-Aldrich from all damages or losses of any kind resulting from your participation in this contest.

Visit us at [sigma-aldrich.com/handh](http://sigma-aldrich.com/handh) for details