

Product Information

CHK2, Active
human, recombinant
GST-tagged, expressed in Sf9 cells

Catalog Number **C0995**
Lot Number 019K0621
Storage Temperature -70°C

Synonyms: RP11-436C9.1; CDS1; CHEK2; HuCds1; LFS2; PP1425; RAD53

Product Description

CHK2 is rapidly phosphorylated and activated in response to replication blocks and DNA damage. The response to DNA damage occurs in an ataxia telangiectasia mutated (ATM)-dependent manner.¹ Expression of wild-type CHK2 leads to increased p53 stabilization after DNA damage; whereas, expression of a dominant-negative CHK2 mutant abrogated both phosphorylation of p53 on Ser²⁰ and p53 stabilization.²

This recombinant product was expressed by baculovirus in Sf9 insect cells using an N-terminal GST-tag. The gene accession number is NM 007194. It is supplied in 50 mM Tris-HCl, pH 7.5, with 150 mM NaCl, 0.25 mM DTT, 0.1 mM EGTA, 0.1 mM EDTA, 0.1 mM PMSF, and 25% glycerol.

Molecular mass: ~88 kDa

Purity: $\geq 70\%$ (SDS-PAGE, see Figure 1)

Specific Activity: 654–884 nmole/min/mg (see Figure 2)

Precautions and Disclaimer

This product is for R&D use only, not for drug, household, or other uses. Please consult the Material Safety Data Sheet for information regarding hazards and safe handling practices.

Storage/Stability

The product ships on dry ice and storage at -70°C is recommended. After opening, aliquot into smaller quantities and store at -70°C . Avoid repeated handling and multiple freeze/thaw cycles.

Figure 1.
SDS-PAGE Gel of Lot Number 019K0621:
>90% (densitometry)

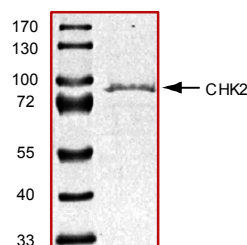
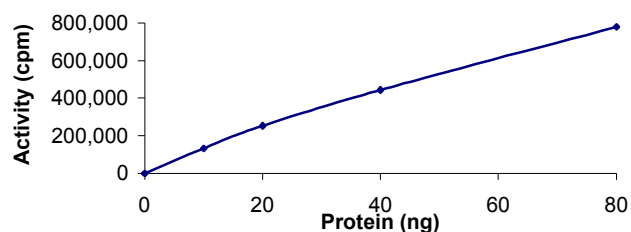


Figure 2.
Specific Activity of Lot Number 019K0621:
729 nmole/min/mg



Procedure

Preparation Instructions

Kinase Assay Buffer – 25 mM MOPS, pH 7.2, 12.5 mM glycerol 2-phosphate, 25 mM MgCl_2 , 5 mM EGTA, and 2 mM EDTA. Just prior to use, add DTT to a final concentration of 0.25 mM.

Kinase Dilution Buffer – Dilute the Kinase Assay Buffer 5-fold with water.

Kinase Solution – Dilute the Active CHK2 (0.1 µg/µl) with Kinase Dilution Buffer to the desired concentration. **Note:** The lot-specific specific activity plot may be used as a guideline (see Figure 2). It is recommended that the researcher perform a serial dilution of Active CHK2 kinase for optimal results.

10 mM ATP Stock Solution – Dissolve 55 mg of ATP in 10 ml of Kinase Assay Buffer. Store in 200 µl aliquots at –20 °C.

γ-³²P-ATP Assay Cocktail (250 µM) – Combine 5.75 ml of Kinase Assay Buffer, 150 µl of 10 mM ATP Stock Solution, 100 µl of γ-³²P-ATP (1 mCi/100 µl). Store in 1 ml aliquots at –20 °C.

Substrate Solution – Dissolve the synthetic peptide substrate (KKKVSRSGLYRSPSPENLNRP) in water at a final concentration of 1 mg/ml.

1% phosphoric acid solution – Dilute 10 ml of concentrated phosphoric acid to a final volume of 1 L with water.

Kinase Assay

This assay involves the use of the ³²P radioisotope. All institutional guidelines regarding the use of radioisotopes should be followed.

1. Thaw the Active CHK2, Kinase Assay Buffer, Substrate Solution, and Kinase Dilution Buffer on ice. The γ-³²P-ATP Assay Cocktail may be thawed at room temperature.
2. In a pre-cooled microcentrifuge tube, add the following solutions to a volume of 20 µl:
10 µl of Kinase Solution
10 µl of Substrate Solution
3. Set up a blank control as outlined in step 2, substituting 10 µl of cold water (4 °C) for the Substrate Solution.
4. Initiate each reaction with the addition of 5 µl of the γ-³²P-ATP Assay Cocktail, bringing the final reaction volume to 25 µl. Incubate the mixture in a water bath at 30 °C for 15 minutes.
5. After the 15 minute incubation, stop the reaction by spotting 20 µl of the reaction mixture onto an individually pre-cut strip of phosphocellulose P81 paper.

6. Air dry the pre-cut P81 strip and sequentially wash in the 1% phosphoric acid solution with constant gentle stirring. It is recommended the strips be washed a total of 3 times of ~10 minutes each.
7. Set up a radioactive control to measure the total γ-³²P-ATP counts introduced into the reaction. Spot 5 µl of the γ-³²P-ATP Assay Cocktail on a pre-cut P81 strip. Dry the sample for 2 minutes and read the counts. Do not wash this sample.
8. Count the radioactivity on the P81 paper in the presence of scintillation fluid in a scintillation counter.
9. Determine the corrected cpm by subtracting the blank control value (see step 3) from each sample and calculate the kinase specific activity

Calculations:

1. Specific Radioactivity (SR) of ATP (cpm/nmole)

$$SR = \frac{\text{cpm of } 5 \mu\text{l of } \gamma\text{-}^{32}\text{P-ATP Assay Cocktail}}{\text{nmole of ATP}}$$

cpm – value from control (step 7)
nmole – 1.25 nmole (5 µl of 250 µM ATP Assay Cocktail)

2. Specific Kinase Activity (SA) (nmole/min/mg)

$$\text{nmole/min/mg} = \frac{\Delta\text{cpm} \times (25/20)}{SR \times E \times T}$$

SR = specific radioactivity of the ATP (cpm/nmole ATP)
 Δcpm = cpm of the sample – cpm of the blank (step 3)
 25 = total reaction volume
 20 = spot volume
 T = reaction time (minutes)
 E = amount of enzyme (mg)

References

1. Matsuoka, S. et al., Linkage of ATM to cell cycle regulation by the CHK2 protein kinase. *Science*, **282**, 1893-1897 (1998).
2. Chehab N.H. et al., Chk2/hCds1 functions as a DNA damage checkpoint in G(1) by stabilizing p53. *Genes Dev.*, **14**, 278-288 (2000).

BKR,MAM 02/09-1

Sigma brand products are sold through Sigma-Aldrich, Inc.

Sigma-Aldrich, Inc. warrants that its products conform to the information contained in this and other Sigma-Aldrich publications. Purchaser must determine the suitability of the product(s) for their particular use. Additional terms and conditions may apply. Please see reverse side of the invoice or packing slip.