

Application

Note
12

Improved Purge-Trap/GC Analysis of Volatiles in Drinking Water by US EPA Method 524.2

The VOCARB 3000 adsorbent trap is suitable for monitoring volatile organic compounds in drinking water samples, as well as in wastewater and hazardous waste samples. This adsorbent trap meets the requirements of US EPA Methods 502 and 524.2. Relative standard deviation values were less than 15% for all of the compounds listed, and less than 7% for most of the compounds. Recovery of each compound listed was greater than 80%. For certain problem compounds — vinyl chloride, 1,1,1-trichloroethane, and carbon tetrachloride — the VOCARB 3000 trap offered significantly better performance compared to the Tenax/silica gel/charcoal trap recommended by Method 524.

Analysts monitoring drinking water samples for volatile organic compounds (VOCs) using US EPA Methods 502 and 524.2 must concentrate their samples, using a purge and trap technique, prior to chromatographic analysis. The same technique is used for all of the volatiles methods, including 602/624 (wastewater) and 8260 (hazardous waste). Volatile compounds are purged from the water sample, collected on an adsorbent material, and delivered to the GC column by thermal desorption.

The EPA would allow laboratories using EPA Method 502.2 to use alternative sorbents to trap volatile organic compounds, provided they meet all quality assurance criteria specified in the method. This same option is already included in EPA Method 524.2 (EPA 1192a).[▲]

Key Words:

- adsorbent traps ● drinking water
- volatile organic compounds

[▲] Federal Register/Vol. 58. No. 239/Wednesday, December 15, 1993/Proposed Rules, p. 65627.

Table 1. Compounds with Established Maximum Contamination Levels (20ppb in 5mL water)

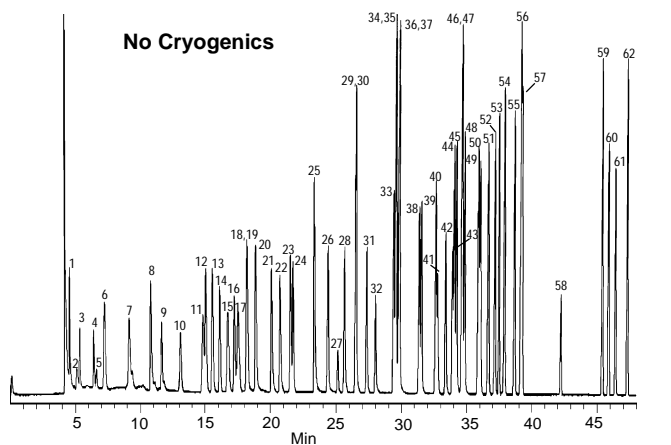
Compound	Response Factors [■]						Relative % Recovery	
	Avg.	VOCARB 3000 Std. Dev.	%RSD	Avg.	Tenax/Silica Gel/Charcoal Std. Dev.	%RSD	VOCARB 3000	Ten/SG/C
Vinyl Chloride	0.288	0.027	9.4	0.145	0.051	35.2	117.9	59.6
1,1-Dichloroethene	0.226	0.005	2.4	0.244	0.018	7.5	104.4	112.6
Methylene Chloride	0.294	0.016	5.4	0.319	0.018	5.6	106.1	114.9
trans-1,2-Dichloroethene	0.254	0.009	3.6	0.257	0.068	3.3	96.4	97.7
cis-1,2-Dichloroethene	0.297	0.013	4.2	0.270	0.036	13.5	96.8	88.3
Chloroform	0.539	0.032	5.9	0.539	0.079	14.6	97.5	97.6
1,1,1-Trichloroethane	0.347	0.019	5.4	0.192	0.009	4.7	93.8	52.0
Carbon tetrachloride	0.341	0.013	3.7	0.231	0.016	7.1	91.7	62.2
1,2-Dichloroethene	0.381	0.013	4.2	0.323	0.021	6.5	84.0	90.1
Benzene	0.690	0.015	2.2	0.722	0.017	2.4	86.1	90.2
Trichloroethane	0.364	0.012	3.2	0.395	0.009	2.2	86.5	93.9
1,2-Dichloropropane	0.367	0.009	2.5	0.369	0.016	4.3	90.6	91.2
Bromodichloromethane	0.531	0.006	1.2	0.549	0.030	5.4	93.8	96.9
Toluene	0.861	0.018	2.1	0.899	0.024	2.6	83.1	86.8
1,1,2-Trichloroethene	0.386	0.014	4.6	0.347	0.030	8.5	80.7	91.5
Tetrachloroethene	0.499	0.033	6.7	0.491	0.029	6.0	95.5	94.0
Dibromochloromethane	0.571	0.021	3.6	0.607	0.043	7.1	91.4	97.2
Chlorobenzene	1.443	0.077	5.3	1.466	0.078	5.3	92.8	94.2
Ethylbenzene	1.798	0.057	3.2	1.936	0.113	5.8	80.0	86.1
m- and p-Xylene	1.351	0.024	1.8	1.551	0.066	4.2	79.9	91.7
o-Xylene	0.722	0.019	2.6	0.779	0.023	3.0	84.5	91.1
Styrene	1.165	0.066	5.6	1.266	0.069	5.5	83.8	91.0
Bromoform	0.984	0.083	8.4	1.083	0.123	11.4	83.3	91.6
1,4-Dichlorobenzene	1.681	0.179	10.6	1.603	0.017	1.1	101.5	96.8
1,2-Dichlorobenzene-d ₄	1.500	0.000	0.0	1.500	0.000	0.0	100.0	100.0
1,2-Dichlorobenzene	1.626	0.018	1.1	1.624	0.011	0.7	103.4	103.3
1,2,4-Trichlorobenzene	1.311	0.052	3.9	1.514	0.064	4.2	84.2	97.2

[■]n = 6

Figure A. VOCARB 3000 Trap Provides Good Overall Response for Volatile Compounds

Sample: 10ppb each component in 5mL water
 Trap: VOCARB 3000
 Purge: 11 min, 40mL/min
 Dry: 3 min
 Desorb. Temp.: 250°C for 4 min
 Bake: 280°C for 10 min
 Column: **VOCOL, 105m x 0.53mm ID, 3.0µm film**
 Cat. No.: **25358**
 Oven: 35°C (10 min) to 200°C at 4°C/min, hold 10 min
 Carrier: helium, 10mL/min
 Det.: MS, Scan Range m/z = 35-260 at 0.6 sec/scan

- | | |
|-------------------------------|--|
| 1. Dichlorodifluoromethane | 32. 1,2-Dibromoethane |
| 2. Chloromethane | 33. Chlorobenzene |
| 3. Vinyl chloride | 34. 1,1,1,2-Tetrachloroethane |
| 4. Bromomethane | 35. Ethylbenzene |
| 5. Chloroethane | 36. m-Xylene |
| 6. Trichlorofluoromethane | 37. p-Xylene |
| 7. 1,1-Dichloroethane | 38. o-Xylene |
| 8. Methylene chloride | 39. Styrene |
| 9. trans-1,2-Dichloroethane | 40. Isopropylbenzene |
| 10. 1,1-Dichloroethane | 41. Bromoform |
| 11. 2,2-Dichloropropane | 42. 1,1,2,2-Tetrachloroethane |
| 12. cis-1,2-Dichloroethane | 43. 1,2,3-Trichloropropane |
| 13. Chloroform | 44. n-Propylbenzene |
| 14. Bromochloromethane | 45. Bromobenzene |
| 15. 1,1,1-Trichloroethane | 46. 1,3,5-Trimethylbenzene |
| 16. 1,1-Dichloropropene | 47. 2-Chlorotoluene |
| 17. Carbon tetrachloride | 48. 4-Chlorotoluene |
| 18. 1,2-Dichloroethane | 49. tert-Butylbenzene |
| 19. Benzene | 50. 1,2,4-Trimethylbenzene |
| 20. Fluorobenzene (int. std.) | 51. sec-Butylbenzene |
| 21. Trichloroethene | 52. p-Isopropyltoluene |
| 22. 1,2-Dichloropropane | 53. 1,3-Dichlorobenzene |
| 23. Bromodichloromethane | 54. 1,4-Dichlorobenzene |
| 24. Dibromomethane | 55. n-Butylbenzene |
| 25. cis-1,2-Dichloropropene | 56. 1,2-Dichlorobenzene-d ₄ (int. std.) |
| 26. Toluene | 57. 1,2-Dichlorobenzene |
| 27. trans-1,3-Dichloropropene | 58. 1,3-Dibromo-3-chloropropane |
| 28. 1,1,2-Trichloroethane | 59. 1,2,4-Trichlorobenzene |
| 29. 1,3-Dichloropropane | 60. Hexachlorobutadiene |
| 30. Tetrachloroethene | 61. Naphthalene |
| 31. Chlorodibromomethane | 62. 1,2,3-Trichlorobenzene |



92-0134

Trademarks

Carbopack, Carboxen, VOCARB, VOCOL — Supelco, Inc.
 Dynatech — Dynatech Precision Sampling Corp..
 Tekmar — Tekmar Co.
 Tenax — Enka Research Institute Arnhem

Fused silica columns manufactured under HP US Pat. No. 4,293,415.

Contact our Technical Service Department
 (phone 800-359-3041 or 814-359-3041, FAX 814-359-5468)
 for expert answers to your questions.

Although purge traps are specified in US EPA methods, provisions for *best available technology* allow the selection of traps that offer improved performance, if they meet the QA/QC criteria stated in the method. (Consult your regional EPA office before using a non-specified trap.) Advanced materials, such as the adsorbents used in VOCARB traps, can offer superior adsorption/desorption characteristics, thermal stability, and hydrophobicity.

The VOCARB 3000 trap contains a combination of adsorbents that efficiently traps and releases the range of compounds listed in EPA Method 524.2. Good overall response for the Method 524.2 analytes was obtained using the VOCARB 3000 trap (Figure A). The thermal stability of the adsorbents used in the VOCARB 3000 trap allows a higher desorption temperature (250°C) than does the EPA-listed trap (180°C), so that the analytes are released more rapidly, in a focused plug rather than in a broad band, for improved peak shape and resolution.

We compared the performance of the VOCARB 3000 trap to that of the Tenax®/silica gel/charcoal trap specified by EPA Methods 524.2 and 502 (Table 1). Response factors, calculated with respect to fluorobenzene and 1,2-dichlorobenzene-d₄, show that the VOCARB 3000 trap meets performance requirements for Methods 502.2 and 524.2. Relative standard deviation (RSD) values were less than 15% for all of the compounds listed, and less than 7% for most of the compounds. Overall, the VOCARB 3000 trap's performance was comparable to that of the Tenax/silica gel/charcoal trap; Recovery of each compound listed was greater than 80%. For certain problem compounds — vinyl chloride, 1,1,1-trichloroethane, and carbon tetrachloride — the VOCARB 3000 trap offered significantly better performance.

The VOCARB 3000 trap offers superior performance for monitoring volatile compounds in water samples. Since EPA methods for volatiles analysis in drinking water, wastewater, and hazardous waste list the same compounds, the VOCARB 3000 trap can be used for all of the methods. However, we stress the importance of demonstrating the calibration requirements for each method when using the VOCARB 3000 trap to comply with the best available technology provisions of the methods.

Ordering Information: VOCARB 3000 Traps

10cm Carbopack™ B/6cm Carboxen™ 1000/ 1cm Carboxen 1001

Instrument	Description	Cat. No.
Tekmar®	straight, 30.5cm (12")	21066-U
Dynatech®	straight, 30.5cm (12") with attached thermocouple	21085-U
O.I. Analytical	U-shaped, 29.2cm (11.5") with attached thermocouple	21131-U
CDS	straight, 28.6cm (11.25")	21159

For VOCARB 3000 traps for other instruments, refer to the Supelco catalog.

VOCOL™ Fused Silica Capillary Column 105m x 0.53mm ID, 3.0µm film

2-5358

Note 12

For more information, or current prices, contact your nearest Supelco subsidiary listed below. To obtain further contact information, visit our website (www.sigma-aldrich.com), see the Supelco catalog, or contact Supelco, Bellefonte, PA 16823-0048 USA.

ARGENTINA · Sigma-Aldrich de Argentina, S.A. · Buenos Aires 1119 AUSTRALIA · Sigma-Aldrich Pty. Ltd. · Castle Hill NSW 2154 AUSTRIA · Sigma-Aldrich Handels GmbH · A-1110 Wien
 BELGIUM · Sigma-Aldrich N.V./S.A. · B-2880 Bornem BRAZIL · Sigma-Aldrich Química Brasil Ltda. · 01239-010 São Paulo, SP CANADA · Sigma-Aldrich Canada, Ltd. · 2149 Winston Park Dr., Oakville, ON L6H 6J8
 CZECH REPUBLIC · Sigma-Aldrich s.r.o. · 186 00 Praha 8 DENMARK · Sigma-Aldrich Denmark A/S · DK-2665 Vallensbaek Strand FINLAND · Sigma-Aldrich Finland/YA-Kemia Oy · FIN-00700 Helsinki
 FRANCE · Sigma-Aldrich Chimie · 38297 Saint-Quentin-Fallavier Cedex GERMANY · Sigma-Aldrich Chemie GmbH · D-82041 Deisenhofen GREECE · Sigma-Aldrich (o.m.) Ltd. · Ilioupoli 16346, Athens
 HUNGARY · Sigma-Aldrich Kft. · H-1067 Budapest INDIA · Sigma-Aldrich Co. · Bangalore 560 048 IRELAND · Sigma-Aldrich Ireland Ltd. · Dublin 24 ISRAEL · Sigma Israel Chemicals Ltd. · Rehovot 76100
 ITALY · Sigma-Aldrich s.r.l. · 20151 Milano JAPAN · Sigma-Aldrich Japan K.K. · Chuo-ku, Tokyo 103 KOREA · Sigma-Aldrich Korea · Seoul MALAYSIA · Sigma-Aldrich (M) Sdn. Bhd. · Selangor
 MEXICO · Sigma-Aldrich Química S.A. de C.V. · 50200 Toluca NETHERLANDS · Sigma-Aldrich Chemie BV · 3330 AA Zwijndrecht NORWAY · Sigma-Aldrich Norway · Torshov · N-0401 Oslo
 POLAND · Sigma-Aldrich Sp. z o.o. · 61-663 Poznań PORTUGAL · Sigma-Aldrich Química, S.A. · Sintra 2710 RUSSIA · Sigma-Aldrich Russia · Moscow 103062 SINGAPORE · Sigma-Aldrich Pte. Ltd.
 SOUTH AFRICA · Sigma-Aldrich (pty) Ltd. · Jet Park 1459 SPAIN · Sigma-Aldrich Química, S.A. · 28100 Alcobendas, Madrid SWEDEN · Sigma-Aldrich Sweden AB · 135 70 Stockholm
 SVITZERLAND · Supelco · CH-9471 Buchs UNITED KINGDOM · Sigma-Aldrich Company Ltd. · Poole, Dorset BH12 4QH
 UNITED STATES · Supelco · Supelco Park · Bellefonte, PA 16823-0048 · Phone 800-247-6628 or 814-359-3441 · Fax 800-447-3044 or 814-359-3044 · email: supelco@sial.com

H

Supelco is a member of the Sigma-Aldrich family. Supelco products are sold through Sigma-Aldrich, Inc. Sigma-Aldrich warrants that its products conform to the information contained in this and other Sigma-Aldrich publications. Purchaser must determine the suitability of the product for a particular use. Additional terms and conditions may apply. Please see the reverse side of the invoice or packing slip.

ACN