

Application

Note
52

Highly Characterized Reference Standard: Reformate

Catalytic conversion at temperatures of 850-1000°F converts – reforms – low-octane naphthas into high-octane products for gasoline and aviation fuel blending and aromatic concentrates. The predominant reaction during reforming is the dehydrogenation of naphthenes (cycloparaffins) to the corresponding aromatics. For example, cyclohexane reforms to benzene, and methyl-cyclohexane reforms to toluene. Research Octane Numbers can be increased from the low 40s to over 100 through reforming. (ChromFax: 394052)

Key Words:

- reformate • reference standards • naphthenes • aromatics

Carefully analyzed by GC/FID and GC/MS procedures, this standard is intended for use as both a qualitative and quantitative reference standard. Analysts can use the chromatograms and peak identifications shown here and enclosed with the product as guide maps for evaluating specific reformates. We anticipate that this reference standard will be used for evaluating refinery process performance, for identifying sources of contamination, in method development, in PIANO analyses, and in training.

To prepare this standard, we obtain bulk samples of reformate from a petroleum refinery and package the material under nitrogen in amber ampuls. We evaluate packaging homogeneity in our QA department, using randomly selected ampuls from the beginning and end of every packaging run. If the homogeneity evaluations are satisfactory, we send samples to an outside evaluator, Consolidated Sciences Inc. (Pasadena, Texas, USA) for detailed component analysis (Figure A).

Consolidated Sciences' analytical approach provides both quantitative data, based on flame ionization detection, and qualitative information, using a mass spectrometer as the detector (Figure B). Use of an "open split" interface between the column and mass spectrometer mimics FID retention times throughout the analysis and prevents vacuum effects on separations. A preliminary class separation of the saturate and combined aromatic/olefin fractions assures proper mass spectral identification of olefins and naphthenes.

Quantitative data are reported on the basis of area percent (Figure A), as a common ground for all to compare, to preclude controversy over whether liquid or weight percent constitutes proper results and what are proper response factors. Area percent can be measured with reasonable accuracy and precision, while liquid and weight percent determinations depend on response factors and on the use of pure analytical standards, many of which are unavailable.

The temperature programming and linear velocity (pressure) parameters chosen are known to be suitable for a wide range of petroleum stream samples encountered by Consolidated Sciences. The analysis is isobaric, although pressure programming could be used. The head pressure used allows good separation of early eluting components and reasonable linear velocity over a wide temperature range.

In the information included with this standard, molecular weights are provided in all cases where they are measurable (Figure A).

Figure A. Portion of the Analysis Report for Reformate Reference Standard

Petroleum Refinery Reformate Cat # 47489 Lot # LA40361				
Ret. Time	Component	Class	Mol. Wt.	Area %
7.62	Isobutane	P	58	0.010
7.95	n-Butane	P	58	0.110
8.11	2,2-Dimethylpropane	P	72	0.002
8.25	cis-2-Butene	O	56	0.001
8.78	3-Methyl-1-butene	O	70	0.004
9.16	Isopentane	P	72	1.570
9.50	1-Pentene	O	70	0.003
9.68	2-Methyl-1-butene	O	70	0.010
9.81	n-Pentane	P	72	0.960
10.03	trans-2-Pentene	O	70	0.009
10.28	cis-2-Pentene	O	70	0.006
10.45	2-Methyl-2-butene	O	70	0.030
11.04	2,2-Dimethylbutane	P	86	0.450
11.79	Cyclopentene	O	70	0.008
11.94	4-Methyl-1-pentene	O	84	0.004

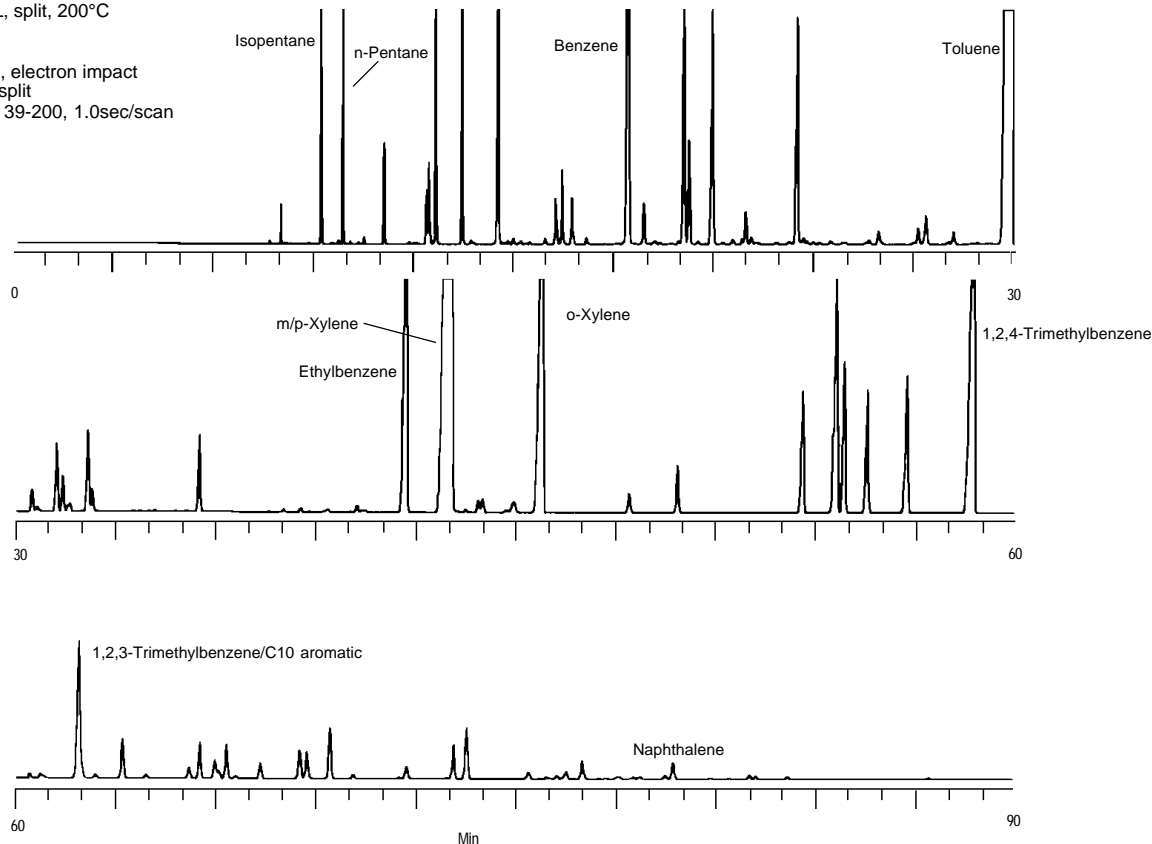
Figure B. Petroleum Refinery Reformate

Capillary GC/FID

Instrument: Hewlett-Packard 5890, Series II
 Column: **Petrocol DH, 100m x 0.25mm ID, 0.5µm film**
 Cat. No.: **24160-U**
 Col. Temp.: 35°C (10 min) to 150°C at 1.5°C/min,
 then to 280°C at 5°C/min, hold 15 min
 Carrier: helium, 48psig (30cm/sec, set at 30°C; $t_{R \text{ methane}} = 6.1 \text{ min}$)
 Det.: FID, 275°C
 Inj.: 0.1mL, split, 200°C

MS Parameters

Ionization Energy: 70 eV, electron impact
 Interface: open split
 Scan: $m/z = 39\text{-}200$, 1.0sec/scan



794-0315

Along with fragmentation patterns, these values are helpful for identifying less common components. Isomers are identified when possible; total carbon number is given when further identification is not possible. However, confidence in the hydrocarbon class assay exceeds 95%. Cases of coelution are dealt with by estimation, based on mass spectral signal strength.

If your work includes monitoring hydrocarbon streams or other analyses involving reformates, we highly recommend this reference standard to you.

Ordering Information:

Petroleum Refinery Reformate Reference Standard

1 mL **47489**

Petrocol™ DH Capillary Column

100m x 0.25mm ID fused silica,
 0.50µm film **24160-U**

Fused silica columns manufactured under HP US Pat. No. 4,293,415.

Petrocol is a trademark of Supelco, Inc.

Contact our Technical Service Department
 (phone 800-359-3041 or 814-359-3041, FAX 814-359-5468)
 for expert answers to your questions.

Note S2

For more information, or current prices, contact your nearest Supelco subsidiary listed below. To obtain further contact information, visit our website (www.sigma-aldrich.com), see the Supelco catalog, or contact Supelco, Bellefonte, PA 16823-0048 USA.

ARGENTINA · Sigma-Aldrich de Argentina, S.A. · Buenos Aires 1119 AUSTRALIA · Sigma-Aldrich Pty. Ltd. · Castle Hill NSW 2154 AUSTRIA · Sigma-Aldrich Handels GmbH · A-1110 Wien
 BELGIUM · Sigma-Aldrich N.V./S.A. · B-2880 Bornem BRAZIL · Sigma-Aldrich Quimica Brasil Ltda. · 01239-010 São Paulo, SP CANADA · Sigma-Aldrich Canada, Ltd. · 2149 Winston Park Dr., Oakville, ON L6H 6J8
 CZECH REPUBLIC · Sigma-Aldrich s.r.o. · 186 00 Praha 8 DENMARK · Sigma-Aldrich Denmark A/S · DK-2665 Vallensbaek Strand FINLAND · Sigma-Aldrich Finland/YA-Kemia Oy · FIN-00700 Helsinki
 FRANCE · Sigma-Aldrich Chimie · 38297 Saint-Quentin-Fallavier Cedex GERMANY · Sigma-Aldrich Chemie GmbH · D-82041 Deisenhofen GREECE · Sigma-Aldrich (o.m.) Ltd. · Ilioupoli 16346, Athens
 HUNGARY · Sigma-Aldrich Kft. · H-1067 Budapest INDIA · Sigma-Aldrich Co. · Bangalore 560 048 IRELAND · Sigma-Aldrich Ireland Ltd. · Dublin 24 ISRAEL · Sigma Israel Chemicals Ltd. · Rehovot 76100
 ITALY · Sigma-Aldrich s.r.l. · 20151 Milano JAPAN · Sigma-Aldrich Japan K.K. · Chuo-ku, Tokyo 103 KOREA · Sigma-Aldrich Korea · Seoul MALAYSIA · Sigma-Aldrich (M) Sdn. Bhd. · Selangor
 MEXICO · Sigma-Aldrich Quimica S.A. de C.V. · 50200 Toluca NETHERLANDS · Sigma-Aldrich Chemie BV · 3330 AA Zwijndrecht NORWAY · Sigma-Aldrich Norway · Torshov · N-0401 Oslo
 POLAND · Sigma-Aldrich Sp. z o.o. · 61-663 Poznań PORTUGAL · Sigma-Aldrich Quimica, S.A. · Sintra 2710 RUSSIA · Sigma-Aldrich Russia · Moscow 103062 SINGAPORE · Sigma-Aldrich Pte. Ltd.
 SOUTH AFRICA · Sigma-Aldrich (pty) Ltd. · Jet Park 1459 SPAIN · Sigma-Aldrich Quimica, S.A. · 28100 Alcobendas, Madrid SWEDEN · Sigma-Aldrich Sweden AB · 135 70 Stockholm
 SWITZERLAND · Supelco · CH-9471 Buchs UNITED KINGDOM · Sigma-Aldrich Company Ltd. · Poole, Dorset BH12 4QH
 UNITED STATES · Supelco · Supelco Park · Bellefonte, PA 16823-0048 · Phone 800-247-6628 or 814-359-3441 · Fax 800-447-3044 or 814-359-3044 · email: supelco@sial.com

H

Supelco is a member of the Sigma-Aldrich family. Supelco products are sold through Sigma-Aldrich, Inc. Sigma-Aldrich warrants that its products conform to the information contained in this and other Sigma-Aldrich publications. Purchaser must determine the suitability of the product for a particular use. Additional terms and conditions may apply. Please see the reverse side of the invoice or packing slip.