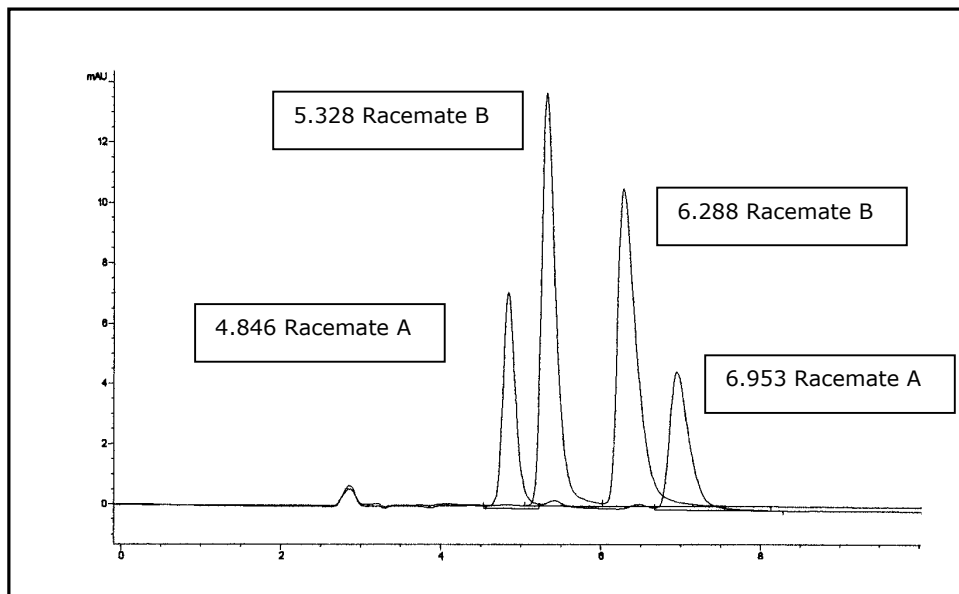
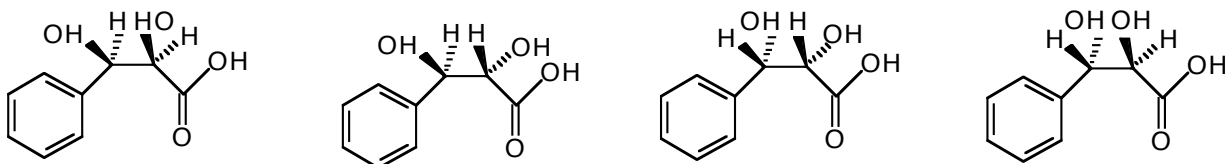


# APPLICATION REPORT *astec*

## LC002 Biocatalysis

### The Determination of the Enantiomeric Excess of *cis*- and *trans*-diol Reaction Products from an Epoxyhydrolase Reaction

CHIROBIOTIC chiral stationary phases are very useful for monitoring biocatalytic conversions because no sample preparation is necessary. Aqueous reactions can be injected directly and this CSP is very sensitive to structural differences allowing for monitoring of all steps in the reaction process.



Conditions:  
Column: CHIROBIOTIC R, 250x4.6mm, 5 micron  
Catalog No.: 13024  
Mobile Phase: 0.1% Ammonia, pH 4.1 with formic acid/MeOH (50/50 %v/v)  
Flow Rate: 1.0 mL/min.

*Courtesy of Dr. Lucien Duchateau, DSM Fine Chemicals, Geleen, The Netherlands.*

LC002-5/05 ©2005 Advanced Separation Technologies Inc. All rights reserved. Printed in USA.