

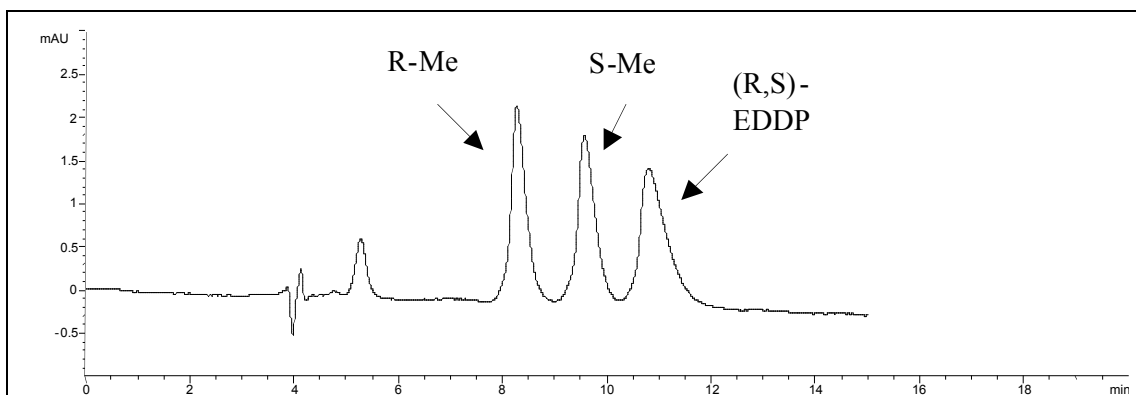
APPLICATION REPORT *astec*

LC007 Bioanalysis

An MS-Compatible LC Method for the Separation of Methadone From the Main Metabolite, EDDP

Studies of the pharmacokinetics of racemic methadone continue in order to fully understand the interaction of the individual enantiomers in the maintenance treatment of heroin dependants. This simple and MS-compatible method provides a separation of the enantiomers of methadone from the main metabolite, EDDP.

Previous methods had used a protein-based CSP, α 1-acid glycoprotein, but had the disadvantage of co-elution of one of the EDDP isomers with the parent compound.



Column: CYCLOBOND I 2000 HP-RSP, 250 x 4.6mm, 5 μ m
Catalog No: 24024
Mobile Phase: 20/80: ACN/0.1% HCOOH
Flow Rate: 0.8 ml/min
Detection: UV - 292 nm
Temperature: 23°C
Injection: 3mL of 0.5mg/mL solution in mobile phase

LC007-2/06 ©2006 Advanced Separation Technologies Inc. All rights reserved.
Printed in USA.