

Application Report 118

LC-MS of Complex Peptide Mix Using Ascentis™ C18

This application demonstrates the suitability of Ascentis C18 for the efficient separation of peptides derived from tryptic digests of proteins by LC-MS.

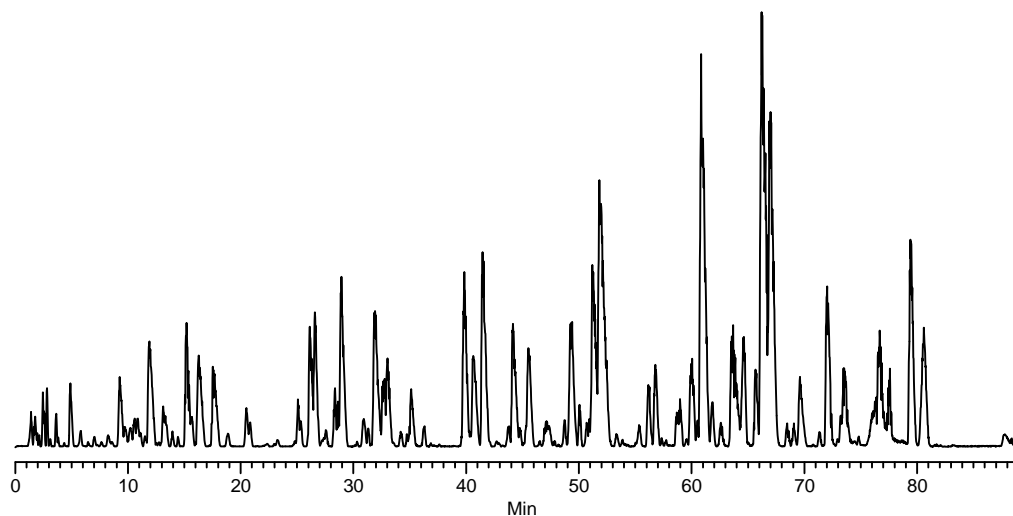
Key Words

peptide map; proteomics; LC-MS; Ascentis C18, 581304-U, mass spectrometry

Author: Hillel Brandes

Acquisition System: Thermo Surveyor LC and LCQAdvantage

Notebook Reference: 1465



G002441

Conditions

column: Ascentis C18, 15 cm x 2.1 mm I.D., 5 µm particles (581304-U)
mobile phase A: 25 mM formic acid in water
mobile phase B: 50:50, 25 mM formic acid in water:25 mM formic acid in acetonitrile
flow rate: 0.2 mL/min.
temp.: 35 °C
det.: ESI (+), full scan
injection: 10 µL
sample: tryptic digest of carboxymethylated protein mixture 2.4 g/L in 0.1% formic acid

gradient:	Min	%A	%B
	0	90	10
	90	36	64

Ascentis is a trademark of Sigma-Aldrich Co.