

# Application Report 174

## LC-MS of Complex Peptide Mixture Using Ascentis™ RP-Amide

A complex peptide mixture is resolved on Ascentis RP-Amide.

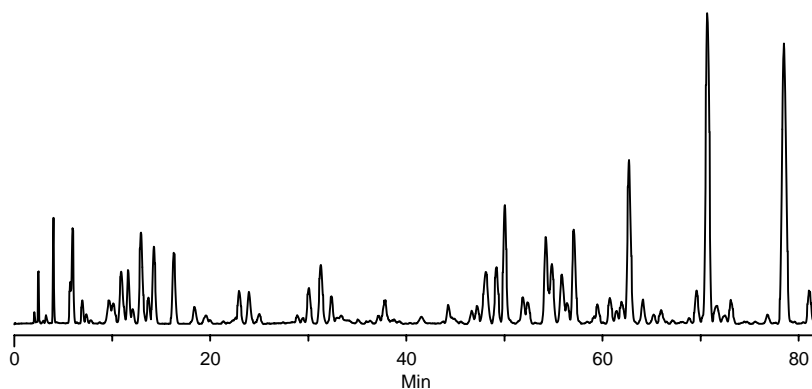
### Key Words

peptide map; proteomics; LC-MS; Ascentis RP-Amide, 565306-U

Author: Hillel Brandes

Acquisition System: Micro-Tech Scientific UltraPlus II / Thermo LCQ Advantage

Notebook Reference: 1524



G002670

### Conditions

column: Ascentis RP-Amide, 25 cm x 2.1 mm I.D., 5 µm particles (565306-U)  
mobile phase A: 50:50, 50 mM formic acid titrated with acetate (pH 3.0):water  
mobile phase B: 50:50, 50 mM formic acid titrated with acetate (pH 3.0):  
acetonitrile  
flow rate: 0.2 mL/min.  
temp.: ambient  
det.: ESI (+)  
injection: 4 µL  
sample: tryptic digest of carboxymethylated protein mixture 1.5 g/L in 50 mM  
formic acid  
gradient:

Min	%A	%B
0	90	10
80	50	50

Ascentis is a trademark of Sigma-Aldrich Co.