

Application Report 199

Analysis of Antineoplastic Methotrexate Using Ascentis™ C18

This application demonstrates the suitability of Ascentis C18 for the efficient elution of the antineoplastic methotrexate by HPLC.

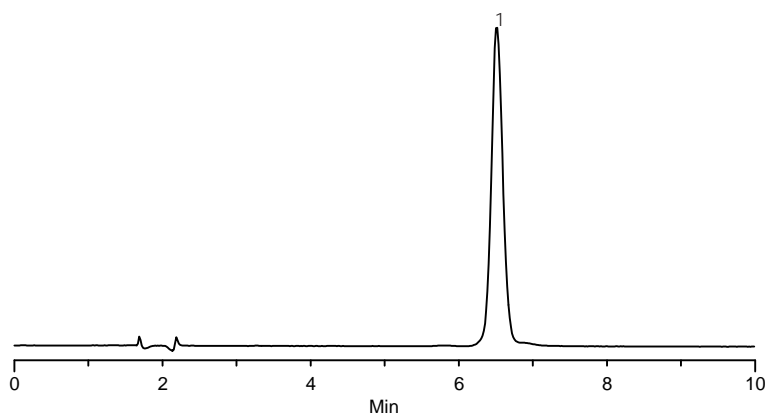
Key Words

Ascentis C18, 581324-U, methotrexate, 59-05-2, A6770, antineoplastic

Author: Hugh Cramer

Acquisition System: Cinnabar Mountain

Notebook Reference: 1551



G002827

Conditions

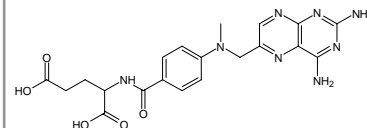
column: Ascentis C18, 15 cm x 4.6 mm I.D., 5 µm particles (581324-U)
mobile phase: 88:12, 10 mM monobasic potassium phosphate (pH 3.0 w/phosphoric acid):acetonitrile
flow rate: 1 mL/min.
temp.: 35 °C
det.: UV at 254 nm
injection: 10 µL
sample: 50 µg/mL

Peak IDs

1. Methotrexate

Structures

Methotrexate - G002828



Ascentis is a trademark of Sigma-Aldrich Co.