

Application Report 323

Analysis of Menthol and Methyl Salicylate Using Ascentis™ C8

This application demonstrates the suitability of the Ascentis C8 for the analysis of menthol and methyl salicylate. Structures along with the optimized chromatogram obtained on the Ascentis C8 are presented.

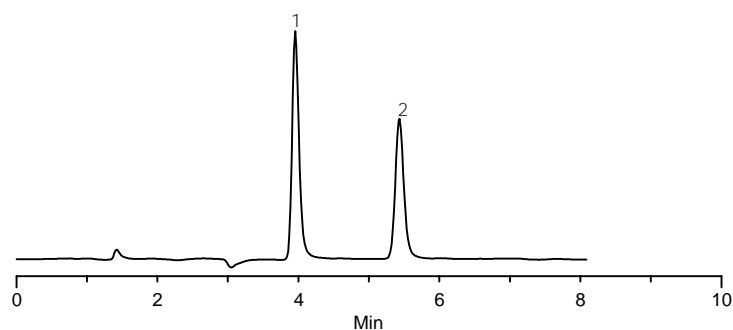
Key Words

(1R,2S,5R)-(-)-menthol, 2216-51-5, 588733, methyl salicylate, 119-36-8, 240826, Ascentis C8, 581424-U

Author: Hugh M. Cramer

Acquisition System: Waters 2690
Cinnabar Mountain

Notebook Reference: 1558



G003249

Conditions

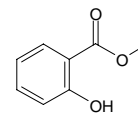
column: Ascentis C8, 15 cm x 4.6 mm I.D., 5 µm particles (581424-U)
mobile phase: 35:65, water:acetonitrile
flow rate: 1.0 mL/min.
temp.: 30 °C
det.: RI at 35 °C
injection: 25 µL
sample: as indicated in mobile phase

Peak IDs

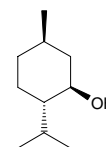
1. Methyl salicylate (2.5 mg/mL)
2. Menthol (2.5 mg/mL)

Structures

Methyl salicylate - G003248



Menthol - G003247



Ascentis is a trademark of Sigma-Aldrich Co.