

## Chlorinated Pesticides Analysis by Capillary GC: Alternative Approaches

We manufacture and test SPB-608 capillary columns specifically for analyses of chlorinated pesticides. 30 m x 0.25 mm I.D. columns can be used in capillary GC systems; 15 m x 0.53 mm I.D. columns can be used in either capillary or packed column systems. A general purpose SPB-5 column can be used in combination with an SPB-608 column – the alternative elution orders and elution times provide confirmational support. Solid phase extraction and solid phase microextraction reduce sample preparation time and costs, relative to liquid-liquid extraction. Because no solvent is introduced onto the column, SPME also enables analysts to use 15 m narrowbore columns, rather than 30 m columns, for faster analyses. Procedures for using these sample preparation techniques are described here.

### Key Words

- chlorinated pesticides ● priority pollutants
- hazardous waste ● solid phase microextraction
- solid phase extraction

Chlorinated pesticides are particularly difficult to quantify by packed column GC. Some of these compounds are incompletely separated, others can break down during analysis. Even small lot-to-lot inconsistencies in packing deactivation cause sample stability to vary from column to column. US Environmental Protection Agency (EPA) Method 608 includes an option for using capillary columns for analyzing 16 chlorinated pesticides in wastewater (1). We manufacture and test SPB™-608 bonded phase capillary columns specifically for analyses of these pesticides. 30 m x 0.25 mm I.D. columns can be used in capillary GC systems; 15 m x 0.53 mm I.D. columns can be used in either capillary or packed column systems. A general purpose SPB-5 column can be used in combination with an SPB-608 column – the alternative elution orders and elution times provide confirmational support.

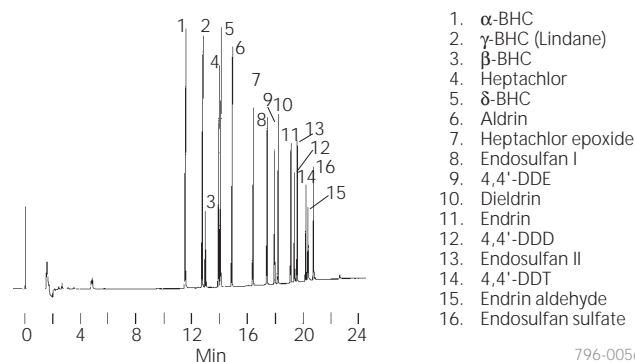
### Using 0.25 mm I.D. SPB-608 Columns in Capillary GC Systems

A 30 m x 0.25 mm I.D. SPB-608 column is useful for monitoring chlorinated pesticides in sediment, soil, foods, and other matrices, as well as in water. When used with a simple temperature program, a 30 m x 0.25 mm I.D. SPB-608 column will separate the 16 pesticides listed in US EPA Method 608 in about 20 minutes (Figure A).<sup>a</sup> Sample breakdown is well within limits specified by the EPA.

Simple, rapid separations make an SPB-608 column the best primary column for chlorinated pesticides analyses. Differences in

**Figure A. 16 Chlorinated Pesticides Separated in 20 Minutes**

column: SPB-608, 30 m x 0.25 mm I.D., 0.25 µm film (24103-U)  
 oven: 150 °C (4 min.) to 290 °C at 8 °C/min., hold 5 min.  
 det.: ECD  
 carrier gas: helium, 25 cm/sec., set at 290 °C\*  
 (nitrogen make-up gas, 60 mL/min.)  
 injection: 0.8 µL decane containing 160 ppb each pesticide, splitless (hold 45 sec.)

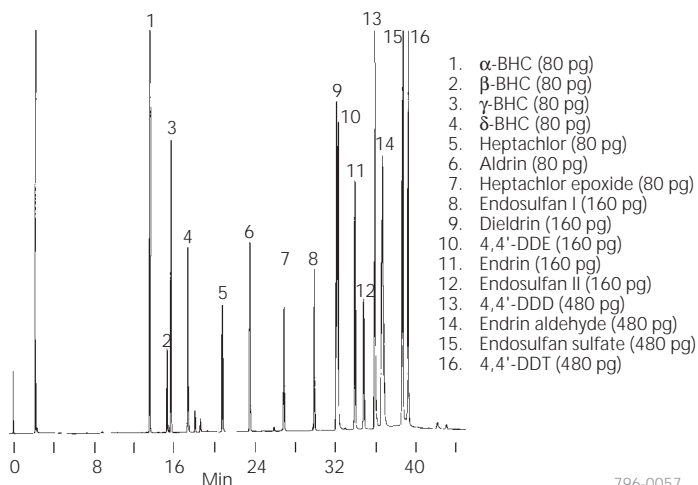


796-0056

\*A halogenated gas such as chloromethane or chlorotrifluoromethane is used to determine linear velocity by ECD.

**Figure B. An Alternative Elution Order**

column: SPB-5, 30 m x 0.25 mm I.D., 0.25 µm film (24034)  
 oven: 150 °C to 230 °C at 2 °C/min., hold 5 min.  
 det.: ECD  
 carrier gas: helium, 20 cm/sec., set at 220 °C  
 injection: 0.8 µL methanol, on-column amounts of each pesticide listed on figure, split (100:1)



796-0057

<sup>a</sup>We recommend you read about using an electron capture detector with capillary columns before using these columns. Consult the instructions included with your detector, or basic capillary chromatography texts.

pesticide elution order and retention times between polar SPB-608 columns and nonpolar SPB-5 columns (Figures A and B, Table 1) enable you to use both columns jointly to confirm pesticide identities. Routine analyses can be done on an SPB-608 column, to take advantage of the shorter analysis time. If confirmation is necessary, the sample also can be analyzed on an SPB-5 column. A pesticide usually can be identified with confidence if it elutes from the two columns at the appropriate, complementary retention times (Table 1), and if the two peaks can be shown to represent approximately the same calculated concentration.

**Table 1. Elution Orders and Retention Times for Chlorinated Pesticides on SPB-608 and SPB-5 Capillary Columns\***

Compound	t <sub>r</sub> SPB-608	t <sub>r</sub> SPB-5	Compound
α-BHC	11.5	13.5	α-BHC
γ-BHC (Lindane)	12.7	15.1	β-BHC
β-BHC	13.0	15.5	γ-BHC
Heptachlor	13.9	17.2	δ-BHC
δ-BHC	14.0	20.6	Heptachlor
Aldrin	14.9	23.5	Aldrin
Heptachlor epoxide	16.4	26.8	Heptachlor epoxide
Endosulfan I	17.4	29.7	Endosulfan I
4,4'-DDE	17.9	31.9	Dieldrin
Dieldrin	18.2	32.1	4,4'-DDE
Endrin	19.1	33.9	Endrin
4,4'-DDD	19.4	34.9	Endosulfan II
Endosulfan II	19.6	35.9	4,4'-DDD
4,4'-DDT	20.2	36.6	Endrin aldehyde
Endrin aldehyde	20.4	38.5	Endosulfan sulfate
Endosulfan sulfate	20.9	39.1	4,4'-DDT

\*Under conditions listed in Figures A and B.

In addition to reducing analysis time, SPB-608 columns improve resolution of some of these pesticides. 4,4'-DDE and dieldrin are separated to baseline (Figure A) and therefore are easier to quantify. This separation is very difficult to obtain from an SPB-5 or equivalent column (Figure B). There is, however, loss of separation between heptachlor and δ-BHC on an SPB-608 column. When used in combination, an SPB-608 column and an SPB-5 column overcome all the resolution problems encountered in this analysis.

You can minimize analyte breakdown and adsorption problems by using cold on-column injection. Precautions must be taken with splitless injections to ensure reproducible analyses and minimize the possibility of analyte adsorption or breakdown. These include:

1. The injection sleeve must be designed for splitless injections. It must be clean and thoroughly deactivated to prevent compounds such as endrin and DDT from being adsorbed at low levels. The sleeve must be properly sealed in the injection port to prevent sample loss in the injector.
2. Injection port temperature must be between 200 °C and 250 °C, to maximize response and minimize analyte breakdown. Lower temperatures can cause incomplete vaporization, leading to poor response and peak broadening. Higher temperatures can cause breakdown of some pesticides.
3. The column should be installed to specified distances in both the injector and detector. Read and follow your instrument manufacturer's recommendations for column installation.
4. Make-up gas is necessary for the proper operation of an electron capture detector. Nitrogen and methane/argon are the two recommended make-up gases. Use helium or hydrogen as the carrier gas.

5. Column ends should be cut squarely and smoothly, and column or ferrule fragments should not be allowed to enter the column. In addition, we recommend using a guard column to keep nonvolatile residues out of the column. A 1m length of deactivated fused silica tubing can be connected to the column inlet by using a GlasSeal™ capillary column connector (see our catalog).
6. The solvent should dissolve the pesticides well and, for good focusing, should have a boiling point 20-30 °C higher than the starting temperature of the analysis.

### Using 0.53 mm I.D. SPB-608 Columns in Capillary or Packed Column Systems

0.25 mm I.D. SPB-608 columns can be used only in dedicated capillary systems. 0.53 mm I.D. SPB-608 columns have the same bonded phase as their 0.25 mm I.D. counterparts, resolve the chlorinated pesticides just as effectively (Figure C), meet standards of inertness, low bleed, and reproducibility acceptable to the EPA, and are thoroughly deactivated to prevent sample breakdown. A 0.53 mm I.D. column can be rinsed to remove accumulated contaminants that affect quantification. The advantage to using a 0.53 mm column is that it can be installed in a packed column system, by using our injector and detector conversion kits (Figure D). These conversion devices are inexpensive, easy to install or remove, and eliminate the need for a sample splitter, thus eliminating both the expense and the discrimination problems associated with splitters.

When we compared the performance of a 0.53 mm I.D. SPB-608 column and a packed column, using both isothermal and temperature programmed conditions, the capillary column provided greater resolution and faster analysis (Figure C). Temperature programming provided the best results – all 16 pesticides were resolved in 12 minutes. The programmed mode provided sharp peaks and increased sensitivity – especially for later eluting components. Under isothermal conditions, the 16 pesticides were resolved in about 17 minutes, and methoxychlor was eluted in 34 minutes. One of the internal standards, bromobenzene, was not separated from mirex. The isothermal analysis is slower than the programmed analysis, but it can be used with older packed column instruments (Figure E) that do not have temperature programming capability, or adequate flow control in the 3 mL/minute range needed for programmed analysis.

To meet EPA requirements for analysis of priority pollutant chlorinated pesticides, a column must meet demanding standards. Inertness is determined by evaluating the breakdown of DDT and endrin, using an electron capture detector (ECD). Under either isothermal or temperature programmed conditions, 0.53 mm I.D. SPB-608 columns meet the criteria of less than 3% breakdown of 4,4'-DDT to 4,4'-DDD and 4,4'-DDE, and less than 10% endrin breakdown to endrin aldehyde. Test results show that in isothermal analyses 4,4'-DDT breakdown is less than 1%, and endrin breakdown is less than 2%. In programmed analyses breakdown is 1% for DDT and 3% for endrin.

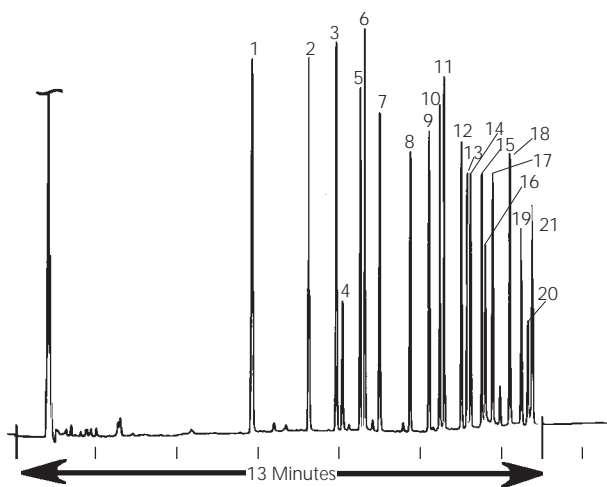
To ensure that each SPB-608 column meets or exceeds the EPA criteria for analyzing picograms of chlorinated pesticides, we measure the relative response for 4,4'-DDT and endrin. 0.53 mm I.D. columns successfully met the EPA criteria for both isothermal and temperature programmed conditions.

**Figure C. Faster Analysis and Greater Resolution of EPA Method 608 Pesticides**

column: SPB-608, 15 m x 0.53 mm I.D., 0.5 µm film (25310-U)  
 oven: 150 °C (4 min.) to 280 °C at 16 °C/min., hold 5 min.  
 det.: ECD  
 carrier gas: helium, 38 cm/sec. (3 cc/min.)  
 injection: 0.6 µL decane containing 120 pg each pesticide, direct injection

**Wide Bore Capillary Column:  
 Pesticides Resolved in Less Than 13 Minutes**

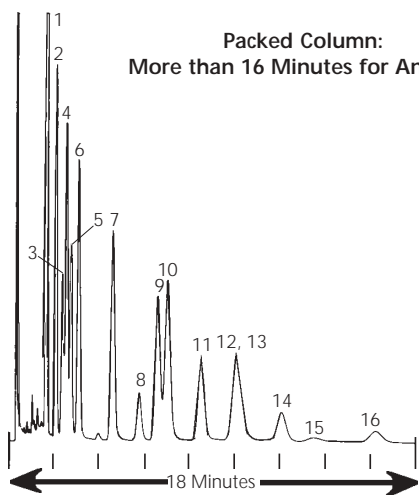
- |                                     |                           |
|-------------------------------------|---------------------------|
| 1. Tetrachloro m-xylene (int. std.) | 11. Dieldrin              |
| 2. α-BHC                            | 12. Endrin                |
| 3. γ-BHC                            | 13. 4,4'-DDD              |
| 4. β-BHC                            | 14. Endosulfan II         |
| 5. Heptachlor                       | 15. 4,4'-DDT              |
| 6. δ-BHC                            | 16. Endrin aldehyde       |
| 7. Aldrin                           | 17. Endosulfan sulfate    |
| 8. Heptachlor epoxide               | 18. Dibutylchloride (IS)  |
| 9. Endosulfan I                     | 19. Methoxychlor          |
| 10. 4,4'-DDE                        | 20. Hexabromobenzene (IS) |
|                                     | 21. Mirex                 |



column: 1.5% SP™-2250/1.95% SP-2401  
 on 100/120 SUPELCOPORT™, 2.0 m x 4 mm I.D. glass (11947, 20 g)  
 oven: 200 °C  
 det.: ECD  
 carrier gas: argon:methane, 95:5, 60 mL/min.  
 injection: 0.5 µL decane containing 10 ng each pesticide

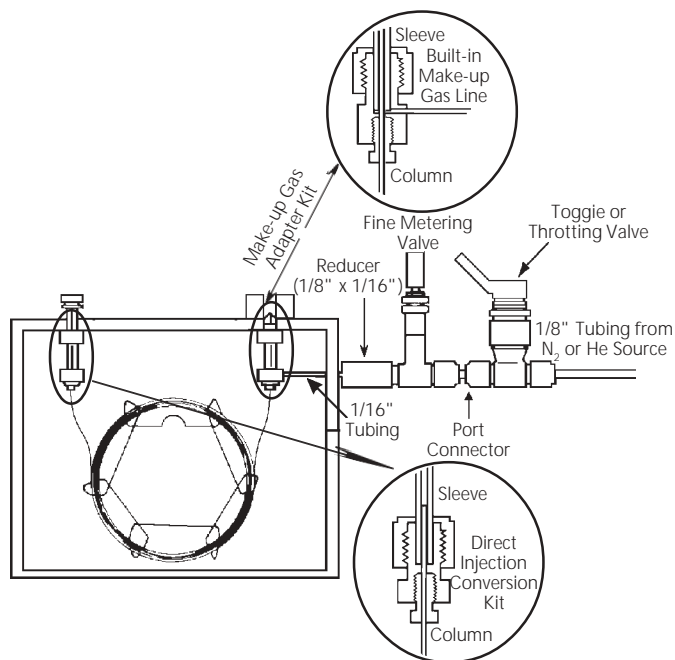
**Packed Column:  
 More than 16 Minutes for Analysis**

- |                        |
|------------------------|
| 1. α-BHC               |
| 2. γ-BHC               |
| 3. β-BHC               |
| 4. Heptachlor          |
| 5. δ-BHC               |
| 6. Aldrin              |
| 7. Heptachlor epoxide  |
| 8. Endosulfan I        |
| 9. 4,4'-DDE            |
| 10. Dieldrin           |
| 11. Endrin             |
| 12. 4,4'-DDD           |
| 13. Endosulfan II      |
| 14. 4,4'-DDT           |
| 15. Endrin aldehyde    |
| 16. Endosulfan sulfate |



796-0058, 0059

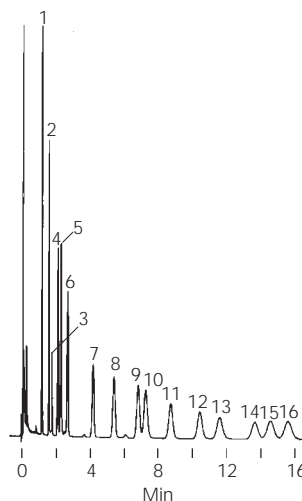
**Figure D. Packed Column Instrument Converted to Wide Bore Capillary Column Use**



797-0223, 796-0062, 0063

**Figure E. Isothermal Analysis, for Older Packed Column Instruments**

column: SPB-608, 15 m x 0.53 mm I.D., 0.5 µm film (25310-U)  
 oven: 170 °C  
 det.: ECD  
 carrier gas: helium, 20 mL/min.  
 injection: 0.6 µL decane containing 120 ng each pesticide, direct injection



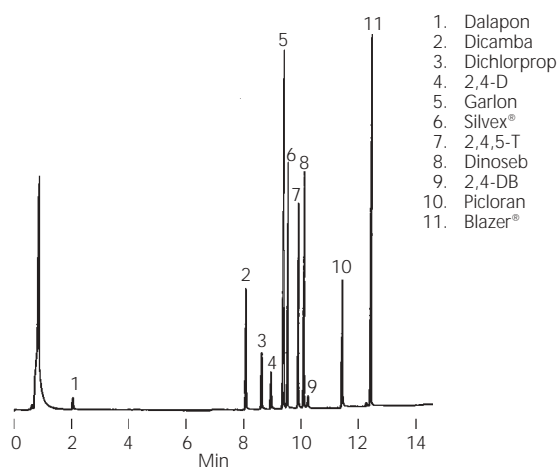
- |                        |
|------------------------|
| 1. α-BHC               |
| 2. γ-BHC               |
| 3. β-BHC               |
| 4. Heptachlor          |
| 5. δ-BHC               |
| 6. Aldrin              |
| 7. Heptachlor epoxide  |
| 8. Endosulfan I        |
| 9. Dieldrin            |
| 10. 4,4'-DDE           |
| 11. Endrin             |
| 12. Endosulfan II      |
| 13. 4,4'-DDD           |
| 14. Endrin aldehyde    |
| 15. 4,4'-DDT           |
| 16. Endosulfan sulfate |

796-0060

In addition to being a suitable replacement for packed columns in EPA Method 608, a 0.53 mm I.D. column can be used to analyze chlorophenoxy herbicide methyl esters in water (US EPA Method 615) or solid waste (EPA Method 8150). In addition to the eight herbicides specified in these methods, Garlon, Picloran, and Blazer® – three compounds whose potential environmental effects are of current interest – also are clearly resolved (Figure F). Procedures differ for isolating the herbicides from water or solid waste samples, but once the herbicides are isolated, they are effectively resolved on a 0.53 mm I.D. SPB-608 column.

**Figure F. Chlorophenoxy Herbicides: US EPA Methods 615 and 8150**

column: SPB-608, 15 m x 0.53 mm I.D., 0.5 µm film (25310-U)  
 oven: 60 °C (1 min.) to 280 °C at 16 °C/min., hold 5 min.  
 det.: ECD  
 carrier gas: helium, 5 mL/min.  
 injection: chlorophenoxy methyl esters



796-0061

### Monitoring Chlorinated Pesticides in Hazardous Waste Sites

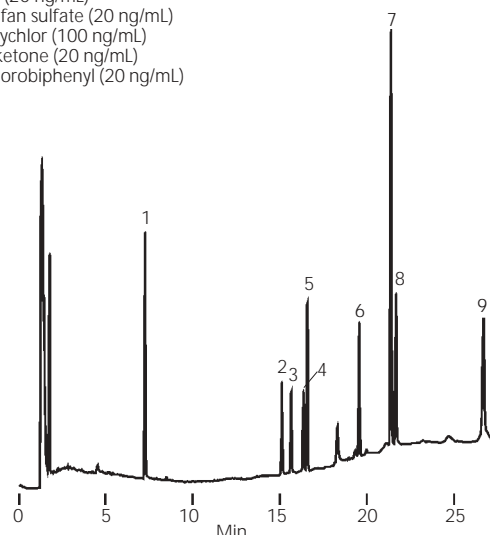
30 m x 0.53 mm I.D. SPB-608 capillary columns are suitable for monitoring chlorinated pesticides in samples from abandoned waste sites, according to the US EPA Contract Laboratory Program (CLP) March 1990 Statement of Work (2), and from waste sites currently in use, according to EPA Method 8081. Although the two methods have similar column performance requirements, the CLP method specifies stringent inertness, resolution, and linearity requirements for the wide-bore (0.53 mm I.D.) capillary GC column to be used. Using the CLP method requirements as the measure of SPB-608 column performance ensures that the column also meets Method 8081 requirements.

We evaluated a 0.53 mm I.D. SPB-608 column, using the test mixtures specified in the CLP method, to measure resolution, column inertness, and system linearity. Each mix contains the same two surrogate compounds, tetrachloro-m-xylene and decachlorobiphenyl. Column performance, measured using a resolution check mixture containing seven target pesticides at concentrations of 10-100 ng/mL, exceeded the CLP method requirement that resolution between adjacent peaks be greater than 60% of the height of the shorter peak. The analytes in the resolution check mix were resolved to the baseline, including the pairs of analytes cited in the method as having the poorest resolution on a DB-608 column: γ-chlordane/Endosulfan I, 4,4'-DDE/dieldrin, and methoxychlor/Endrin ketone (Figure G).

**Figure G. Baseline Resolution of Target Compounds**

column: SPB-608, 30 m x 0.53 mm I.D., 0.5 µm film (25312)  
 oven: 150 °C (0.5 min.) to 275 °C at 6 °C/min.  
 det.: ECD, 300 °C  
 carrier gas: helium, 5 mL/min.  
 inj.: 2 µL, direct, 200 °C, analyte concentrations shown on figure

1. Tetrachloro-m-xylene (20 ng/mL)
2. γ-Chlordane (10 ng/mL)
3. Endosulfan I (10 ng/mL)
4. 4,4'-DDE (20 ng/mL)
5. Dieldrin (20 ng/mL)
6. Endosulfan sulfate (20 ng/mL)
7. Methoxychlor (100 ng/mL)
8. Endrin ketone (20 ng/mL)
9. Decachlorobiphenyl (20 ng/mL)



794-0029

Column inertness is evaluated using a mixture of six target pesticides at concentrations of 10-250 ng/mL. Decomposition of either Endrin or 4,4'-DDD must not exceed 20%, and their combined decomposition must be less than 30%. Endrin recovery is determined by measuring the two by-products, Endrin aldehyde and Endrin ketone. 4,4'-DDD recovery is determined by measuring the by-products 4,4'-DDD and 4,4'-DDE. The SPB-608 column easily met the inertness criteria in the CLP pesticides method. Endrin decomposition was 8.7%. All decomposition was in the form of Endrin ketone; no measurable amounts of Endrin aldehyde were evident. 4,4'-DDD decomposition was 0.16%, in the form of 4,4'-DDE. No measurable amounts of 4,4'-DDD were evident. The combined decomposition of 4,4'-DDD and Endrin on this column was 8.86%.

The linearity of the instrument, including the column, is determined by calculating the percent relative standard deviation (%RSD) for the calibration factors from a three-point calibration curve for each pesticide and surrogate in individual solutions. Three concentration levels are used to determine linearity: a low concentration mix consisting of the target pesticides at 5-10 ng/mL, a mid-range concentration mix (4x low concentration) and a high concentration mix (16x low concentration). The target compounds are analyzed in two different standard mixes, A and B, to avoid coelutions. Absolute retention times are determined by calculating the mean retention time from both mixes. The CLP method allows the RSD for the calibration factors for up to two of the target analytes to be greater than 20% but less than 30%. The RSD for all other analytes must be less than 20%; RSD for the surrogates must be less than 30%.

Linearity for the 0.53 mm I.D. SPE-608 column was well within CLP specifications (Table 2). The mean RSD for all target compounds and surrogates was 9.49%. Absolute retention times for all target analytes and surrogates in the performance evaluation mixture were within the retention time windows established in the calibration runs for the three concentration ranges (Table 2). The target analytes were resolved to the baseline (Figure H), well exceeding the CLP requirement that resolution between adjacent peaks of the individual standard mixes be greater than 90%.

These investigations show that the 0.53 mm I.D. SPB-608 column easily met US EPA requirements for stability, inertness, and linearity, as specified in the CLP Pesticide Statement of Work.

**Table 2. SPB-608 Column Easily Meets CLP Retention Time and Linearity Requirements**

	Mean $t_R$ (n=3)	Retention Time Window* From - To	Calibration Factor %RSD**
Tetrachloro-m-xylene <sup>†</sup>	7.34	7.29 – 7.39	8.78
$\alpha$ -BHC	9.43	9.38 – 9.48	9.90
$\gamma$ -BHC	10.63	10.58 – 10.68	6.32
$\beta$ -BHC	10.92	10.87 – 10.97	3.28
Heptachlor	11.84	11.79 – 11.89	2.22
$\delta$ -BHC	12.04	11.99 – 12.09	17.16
Aldrin	12.88	12.83 – 12.93	14.61
Heptachlor epoxide	14.06	13.99 – 14.13	9.80
$\gamma$ -Chlordane	15.17	15.10 – 15.24	5.84
$\alpha$ -Chlordane	15.65	15.58 – 15.72	7.17
Endosulfan I	15.69	15.62 – 15.76	3.33
4,4'-DDE	16.40	16.33 – 16.47	15.66
Dieldrin	16.61	16.54 – 16.68	7.13
Endrin	17.65	17.58 – 17.72	5.00
4,4'-DDD	18.05	17.98 – 18.12	4.47
Endosulfan II	18.22	18.05 – 18.29	27.86
4,4'-DDT	18.98	18.91 – 19.05	6.84
Endrin aldehyde	19.15	19.08 – 19.22	11.93
Endosulfan sulfate	19.62	19.55 – 19.69	10.65
Methoxychlor	21.41	21.34 – 21.48	6.62
Endrin ketone	21.73	21.66 – 21.80	13.62
Decachlorobiphenyl <sup>†</sup>	26.76	26.66 – 26.86	10.52

\* $\pm 0.05$  minutes for compounds eluting before heptachlor epoxide;  $\pm 0.07$  minutes for heptachlor epoxide and other compounds eluting before decachlorobiphenyl;  $\pm 0.10$  minutes for decachlorobiphenyl.

\*\*%RSD for up to two target compounds, not including surrogates, may be  $>20\%$  but must be  $\leq 30\%$ . %RSD for remainder of target compounds must be  $\leq 20\%$ . %RSD for surrogates must be  $\leq 30\%$ .

<sup>†</sup>Surrogate; retention time measured from analysis of standard mix A.

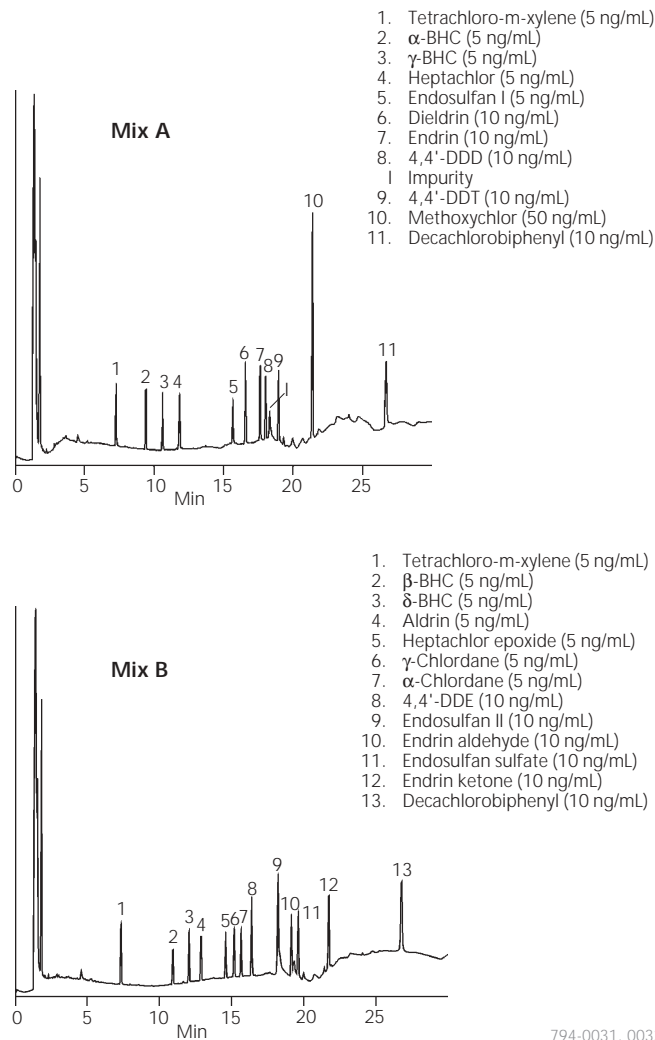
## Sample Preparation

### Fast Screening for Chlorinated Pesticides, Using Solid-Phase Microextraction (SPME) and Capillary GC

In analyses of chlorinated pesticides in wastewater or other environmental samples, the pesticides usually are extracted by liquid-liquid extraction or with solid phase extraction (SPE) cartridges or disks. These methods are time consuming (4-18 hours by liquid-liquid extraction, 1-2 hours by SPE) and labor intensive (20-45 minutes of handling time per sample), and liquid-liquid extractions require large volumes of sample and solvents. In addition, because pesticides generally are present at ppt levels, mixed with other contaminants at higher concentrations, liquid-liquid extraction and SPE can carry interfering compounds into the final sample, producing

## Figure H. Standard Mixes, Low-Range Concentration

column: SPB-608, 30 m x 0.53 mm I.D., 0.5  $\mu$ m film (25312)  
 oven.: 150 °C (0.5min.) to 275 °C at 6 °C/min.  
 det.: ECD, 300 °C  
 carrier gas: helium, 5 mL/min.  
 injection: 2  $\mu$ L, direct, 200 °C, analyte concentrations shown on figure



extraneous peaks and/or high background. SPE cartridges and, particularly, disks are prone to clogging with samples that contain large amounts of sediment.

In contrast, a recently developed approach to concentrating many analytes, solid phase microextraction (SPME),<sup>b</sup> is faster (15 minutes) and much less labor intensive (about 3 minutes of handling time per sample), and requires only small amounts of sample and no organic solvents. SPME also ensures a low background and less interference, making analyte identification and quantification more reliable.

<sup>b</sup>Technology licensed exclusively to Supelco. US patent pending; European patent #0523092.

SPME is a solventless extraction procedure that does not require complex instrumentation. The technique simply involves immersing a phase-coated fused silica fiber into the liquid sample or the headspace above the sample. Pesticides or other compounds of interest adsorb to the fiber, then are thermally desorbed in the injection port of the GC and are transferred to the capillary column. Selectivity can be altered by changing the phase type or the coating thickness. Salt addition or pH adjustment can improve recovery of difficult-to-extract compounds. Table 3 shows that SPME is consistent in routine use.

Because SPME does not introduce solvent onto the column, a shorter, narrower column and a higher initial temperature can be

**Table 3. SPME Provides Precise Relative Responses for Chlorinated Pesticides at 50 ppt**

Compound	Mean	Relative Response Std. Dev.	% RSD
α-BHC	0.72	0.07	9.2
β-BHC	0.06	0.01	19.1
γ-BHC	0.53	0.06	10.5
δ-BHC	0.28	0.03	11.9
Heptachlor	1.01	0.10	10.2
Aldrin	1.25	0.06	4.8
Heptachlor epoxide	0.92	0.12	13.2
γ-Chlordane	0.97	0.12	9.9
Endosulfan I	0.87	0.10	11.1
α-Chlordane	0.92	0.11	10.1
4,4'-DDE	0.92	0.07	8.1
Dieldrin	0.83	0.08	9.5
Endrin	0.68	0.06	9.1
Endosulfan II	0.72	0.09	13.0
4,4'-DDD	0.69	0.06	8.9
Endrin aldehyde	0.13	0.04	28.6
Endosulfan sulfate	0.54	0.06	11.9
4,4'-DDT	0.51	0.08	15.2
Endrin ketone	0.57	0.06	10.7
Methoxychlor	0.26	0.04	16.2

n = 10 extractions

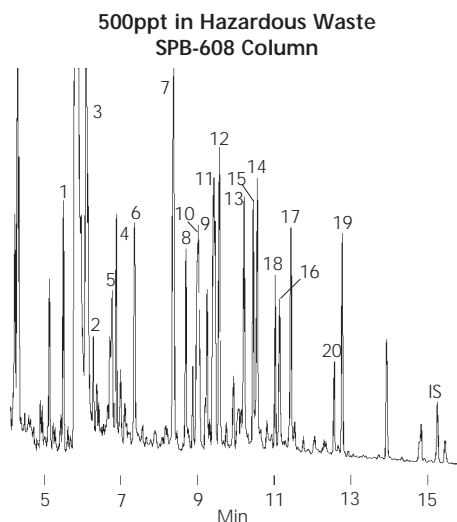
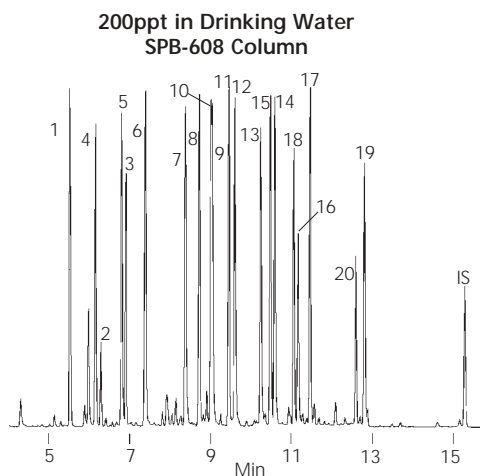
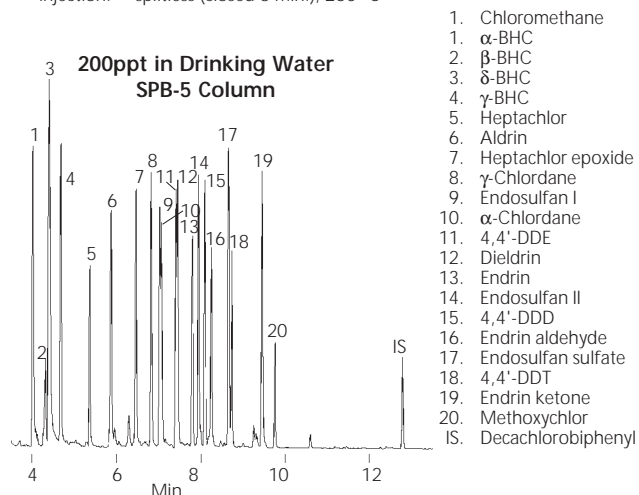
SPME fiber: 100 μm PDMS, immersed in 4 mL water (15 min., rapid stirring) (57300-U, manual sampling version)  
 column: SPB-5, 15 m x 0.20 mm I.D., 0.20 μm film (24165-U)  
 oven: 120 °C (1 min.) to 180 °C at 30 °C/min., then to 290 °C at 10 °C/min.  
 det.: ECD, 300 °C  
 carrier gas: helium, 37 cm/sec. (set at 120 °C)  
 injection: splitless (closed 3 min.), 260 °C

used, relative to other sample preparation techniques. Chlorinated pesticides can be analyzed on a 15 m x 0.20 mm I.D. x 0.20 μm phase film SPB-608 or SPB-5 column – either will resolve all of the pesticides listed in Table 3. Columns typically used with other extraction techniques are 30 m x 0.25 mm I.D., to accommodate solvent injection. The short column/high temperature combination reduces analysis time by 10-15 minutes per sample. Figure I shows a dual column analysis of these pesticides following solid phase microextraction from water. All analytes were identified and quantified in less than 15 minutes. The 15 m x 0.20 mm I.D. columns were easy to install as a pair and it was not difficult to match flow rates. Figure I also shows an analysis of pesticides from hazardous waste on the SPB-608 column.

The combination of extraction by SPME and analysis on short capillary columns greatly increases the number of samples that can

**Figure I. Chlorinated Pesticides By SPME/Capillary GC**

SPME fiber: 100 μm PDMS, immersed in 4 mL water (15 min.) (57300-U, manual sampling version)  
 columns: 15 m x 0.20 mm I.D., 0.20 μm film (SPB-5 - 24165-U; SPB-608 - available on request)  
 oven: 120 °C (1 min.) to 180 °C at 30 °C/min., then to 290 °C at 10 °C/min.  
 det.: ECD, 300 °C  
 carrier gas: helium, 37 cm/sec. (set at 120 °C)  
 injection: splitless (closed 3 min.), 260 °C



1. Chloromethane
1. α-BHC
2. β-BHC
3. δ-BHC
4. γ-BHC
5. Heptachlor
6. Aldrin
7. Heptachlor epoxide
8. γ-Chlordane
9. Endosulfan I
10. α-Chlordane
11. 4,4'-DDE
12. Dieldrin
13. Endrin
14. Endosulfan II
15. 4,4'-DDD
16. Endrin aldehyde
17. Endosulfan sulfate
18. 4,4'-DDT
19. Endrin ketone
20. Methoxychlor
- IS. Decachlorobiphenyl

794-0441, 0442, 0443

be screened in a day, and improves minimum detection limits while maintaining resolution. SPME can be used for screening samples on site, or prior to GC-MS analysis. Samples found to be highly concentrated can be diluted prior to the GC-MS analysis. SPME is equally compatible with the conditions required by a GC-MS system, however, and thus can be used in the formal analysis, as well as for screening.

SPME is fast, easy, and compatible with short, narrow bore capillary columns that provide fast analyses. Chlorinated pesticides can be extracted with good accuracy, even from wastewater or hazardous waste samples that contain high concentrations of contaminants. Because the apparatus is portable and easy to use, SPME can be employed in the field for quick turnaround methods, yet high precision and accuracy also make SPME effective in formal quantitative analyses.

#### Solid Phase Extraction of Pesticides from Fruits and Vegetables

Concern over pesticide residues in fruits and vegetables has led to the development of many methods for monitoring these compounds. At the same time, regulatory agencies and concerned analysts are attempting to reduce the amounts of organic solvents used in sample preparation. Solid phase extraction has proven very effective for extracting and concentrating pollutants in analyses of environmental samples. Currently, many SPE methods for extracting pollutants from aqueous environmental samples employ octyl (C8) or octadecyl (C18) phases bonded to a silica support. These materials allow nonpolar analytes to be recovered at high rates and with good reproducibility. Often, however, polar analytes such as carbamate and thiourea pesticides are recovered at low rates under typical reversed phase extraction conditions.

Relative to traditional liquid-liquid extraction or SPE with C8 or C18 silica-based packings, ENVI™-Carb carbon-based packing provides more uniform recovery of a wide variety of nonvolatile analytes. In comparison to values for similar compounds in other studies, SPE on ENVI-Carb carbon produced superior recovery and minimum variability for more polar analytes, such as acids and bases, while maintaining comparable results for less polar compounds (Table 4).

Physical characteristics of ENVI-Carb carbon and C8- or C18-modified silica are listed in Table 5. Because the carbon-based packing is nonporous, samples can be processed rapidly – adsorption does not require dispersion of analytes into porous regions.

**Table 4. Pesticides Recovery is Highest Using ENVI-Carb SPE Tubes**

Analyte	Recovery (% ± standard deviation)		
	ENVI-Carb* (n=5)	C8/C18 Silica# (n=4)	Liquid/Liquid Extraction# (n=4)
Oxamyl	95 ± 5	53 ± 1	55 ± 16
Methomyl	97 ± 5	43 ± 1	74 ± 8
Aldicarb	96 ± 3	67 ± 8	88 ± 8
Monuron	97 ± 4	90 ± 6	90 ± 4
Carbaryl	98 ± 5	74 ± 15	102 ± 13
Diuron	98 ± 6	90 ± 6	94 ± 3

1 liter water samples, HPLC/UV analyses

\*Data from Supelco laboratories.

#Data from B.E. Goodby, *Environmental Laboratory*, June/July 1990, pp19-58.

Furthermore, although the surface area of the nonporous carbon is smaller than that of the porous silica (measured by nitrogen BET), the carbon's capacity for pesticides is not compromised. In fact, the bed weight typically required is only one half that needed with the silica-based packings. The primary surface interaction mechanism is similar for ENVI-Carb packing and silica-based packings, but ENVI-Carb carbon also acts as a weak ion exchanger (3). This expands the range of analytes the material can be used to extract. Samples can be passed through ENVI-Carb tubes under positive pressure or vacuum. We recommend a slow (dropwise) rate.

Investigators at Agriculture and Agri-Food Canada (Ottawa, Ontario) have developed a multiple-residue cleanup and analysis for

**Table 5. Physical Characteristics of SPE Packings**

ENVI-Carb Carbon	C8- & C18-Modified Silica
graphitized carbon black	silane phase-modified silica gel
hydrophobic	hydrophobic
irregular particles, 40-100 µm	irregular particles, 40-60 µm
nonporous	porous (60-300 Å)
100 m <sup>2</sup> /g surface area	400-600 m <sup>2</sup> /g surface area

**Table 6. Extraction of Pesticides from Fruits and Vegetables**

1. Homogenize 50 g chopped sample with 100 mL acetonitrile (e.g., Omni-mixer, half-speed, 5 min).
2. Add 10 g sodium chloride (= 8 mL in a graduated cylinder). Homogenize 5 min.
3. Transfer ~13 mL of acetonitrile (top) layer to 15 mL graduated centrifuge tube.
4. Add ~3 g sodium sulfate (liquid level to 15 mL mark), cap, shake well to remove water.
5. Centrifuge at high speed for 5 min.
6. Transfer 10 mL aliquot (= 5 g of sample) to a clean 15 mL tube. Evaporate to 0.5 mL under clean nitrogen (water bath, 35 °C).
7. Transfer to ENVI-Carb SPE tube (6 mL tube, 500 mg packing).
8. Elute pesticides with 20 mL acetonitrile/toluene (3:1).
9. Using a rotary evaporator, concentrate sample to ~2 mL. Add 2 x 10 mL acetone, concentrating the material to ~2 mL after each addition, to make a solvent exchange to acetone.
10. Transfer quantitatively to a clean 15 mL tube. Add 50 µL internal standard (50 ng/µL *cis*-chlordane in acetone), then bring volume to 2.5 mL with acetone (final concentrations = 2 g/mL extract, 1.0 ng/µL *cis*-chlordane).

#### GC/mass-specific detection

(for organochlorine, organophosphorus, nitrogen-containing pesticides)

1. Set aside 0.5 mL final extract for GC-MSD analysis. For chromatography, refer to (4).

#### HPLC/postcolumn derivatization/fluorescence detection (for carbamates)

1. Concentrate remaining 2.0 mL final extract to 0.2 mL.
2. Add 20 µL internal standard (40 ng/µL isoprocarb in methanol), then bring volume to 0.8 mL with water (pH 3.0 with 36.5-38% HCl/water, 1:4), filter with 0.45 µm pore filter (final concentration = 1.0 ng/µL isoprocarb). For chromatography, refer to (5).

Process provided by J. Fillion and J.C. Selwyn, Agriculture and Agri-Food Canada, Ottawa, Ontario.

**Table 7. Recovery of Pesticides from Fruits and Vegetables, Using ENVI-Carb SPE Tubes**

Data for many additional pesticides are listed in Bulletin 900 (available on request)

Analyte	Mean % Recovery	Std. Dev.	C.V. (%)	Commodity / % Recovery						
				Kiwi Fruit	Pine-apple	Beet	Sweet Potato	Squash	Snow Peas	Green Peas
<i>Organochlorine Pesticides</i>										
Aldrin	92.3	5.3	5.7	92	95	92	99	97	86	85
α-BHC	93.3	4.4	4.7	96	94	88	100	96	89	90
p,p' DDE	97.7	7.2	7.4	103	100	98	105	102	91	85
p,p' DDT	96.6	9.1	9.4	102	97	99	106	102	91	79
Dieldrin	96.9	5.1	5.2	97	97	96	104	102	93	89
Endosulfan sulfate	97.4	9.1	9.4	106	98	93	110	101	90	84
Endrin	95.0	5.5	5.8	88	91	98	103	100	94	91
Heptachlor	92.6	5.0	5.4	90	94	92	101	96	89	86
Lindane (γ-BHC)	96.1	5.0	5.2	98	98	90	104	99	92	92
Mirex	96.4	8.9	9.2	102	98	98	104	102	93	78
Methoxychlor	99.1	5.9	5.9	104	98	98	107	103	93	91
<i>Nitrogen-Containing Pesticides / Triazines</i>										
Atrazine	94.7	14.7	15.5	67	83	103	109	104	97	100
Cyanazine*	96.7	6.5	6.7		98	93	108	98	94	89
Cyprazine*	95.7	6.8	7.1		99	87	104	94	89	101
Prometon	89.6	10.4	11.6	75	81	87	104	96	85	99
Simazine	95.1	15.8	16.6	67	80	102	110	107	97	103
<i>Organophosphorus Pesticides</i>										
Azinphos-ethyl	92.6	15.0	16.2	65	80	95	105	103	95	105
Chlorpyrifos	97.9	5.9	6.0	99	99	94	106	104	90	93
Coumaphos	94.9	11.4	12.0	78	96	92	101	85	99	113
Diazinon	96.9	5.6	5.8	90	95	99	107	99	92	96
Dimethoate	99.3	4.6	4.6	105	100	95	104	99	92	100
Disulfoton	71.0	25.4	35.8	24	94	57	92	92	64	74
Ethoprophos	92.0	9.8	10.7	85	107	83	104	91	83	91
Malathion	97.6	6.3	6.5	99	101	92	109	98	91	93
Methamidophos	64.9	8.3	12.7	57	72	59	79	57	65	65
Terbufos	89.0	8.7	9.8	76	93	84	101	97	83	89

n = 7 (n = 6 for \*)

Data provided by J. Fillion and J.C. Selwyn, Agriculture and Agri-Food Canada, Ottawa, Ontario.

monitoring more than 200 organochlorine, organophosphorus, nitrogen-containing, and carbamate pesticides in fruits and vegetables. Their flexible system allows quick screening of "rush" samples as well as thorough cleanup of complex samples. These investigators evaluated the potential value of ENVI-Carb SPE tubes in their procedure, using the process summarized in Table 6. Typical results are summarized in Table 7; data for all 200+ pesticides are summarized in Bulletin 900 (available on request).

Initially, the authors followed a sample extraction procedure that required preparing and using extraction minicolumns containing a mixture of charcoal and Celite® (4), but ENVI-Carb tubes enabled them to recover several pesticides that were not recoverable on charcoal/Celite. By replacing the charcoal/Celite minicolumns with ENVI-Carb SPE tubes, they both improved analyte recovery and eliminated the labor-intensive process of preparing minicolumns.

In the preparation of fruit and vegetable extracts for multiple-residue analysis, additional purification is necessary. Polar interferences from the sample matrix are removed by coupling an aminopropyl-silica-based SPE tube to the ENVI-Carb tube. Under these conditions, pesticide recovery is equally good, except for Folpet. In the Canadian group's sample-screening applications, the analysis for organochlorine, organophosphorus, and nitrogen-containing pesticides (more than 200 compounds) is by capillary gas chromatography with mass-specific detection; residues are identified by retention time and ion ratios. Analytes monitored in each GC run (approximately 115 compounds and 80 compounds, respectively) are listed, along with recovery rates and limits of detection, in (4). Analysis for 10 carbamates is by HPLC with fluorescence

detection. Postcolumn derivatization and HPLC columns and conditions are described in (5).

Solid phase extraction of environmental samples on ENVI-Carb tubes offers significant advantages over liquid/liquid extraction or solid phase extraction on silica-based packings. Relative to liquid/liquid extractions, SPE eliminates the need for expensive glassware and large volumes of solvent. The technique also can be easily automated, to allow simultaneous processing of up to 12 or more samples. Relative to silica-based SPE packings, ENVI-Carb tubes offer superior, more consistent recovery for a wide range of organic pollutants.

#### *Low Background Solid Phase Extraction of Chlorinated Pesticides*

In the late 1980s, the US Environmental Protection Agency's Office of Solid Waste developed a series of "quick turnaround" (QTM) screening methods, intended to allow decisions to be made quickly about the extent and nature of contamination at potentially hazardous abandoned waste sites. Because the emphasis was on rapid, on-site sample preparation and analysis, solid phase extraction (SPE) was the main focus of sample preparation for monitoring semivolatiles, including pesticides, in aqueous samples. In EPA investigations, an octylsilane-modified, silica-based packing material showed promise for SPE of pesticides. Consequently, Supelco chemists developed a polymerically bonded octylsilane-silica packing, ENVI-8, which effectively extracts pesticides from water. The polymeric bonding allows the material to resist pH extremes that might be encountered in sampling, and a high carbon loading enhances the packing's capacity for nonpolar analytes.

Any screening method for pesticides requires an extremely inert sample preparation system, because these analytes are of concern at very low concentrations – 10-250 ng/100 mL – and are monitored by sensitive electron capture detection. To ensure reliable extractions, we packed 6 mL glass tubes with 0.5 g of ENVI-8 packing and retained the material with Teflon® frits. We extracted pesticide standards at two concentration levels: 250 ng each pesticide/mL (“packing capacity level”) and 10 ng each pesticide/mL (“contamination level”). The higher level was intended to test whether the SPE tubes have adequate capacity for the analytes; the lower level would confirm that background levels in the SPE tube are below the minimum detection levels for the analytes. After monitoring the effects of pH, drying time, and other variables on the extraction, we found the extraction procedure described in Table 8 to be excellent

for this purpose. Extractions were performed using a Visiprep™ DL Solid Phase Extraction Vacuum Manifold,▲ fitted with disposable Teflon sample guides and a Visidry™ Drying Attachment.▲▲

Using the procedure in Table 8, we obtained very satisfactory recovery levels for pesticides at both the high concentration and low concentration levels (Table 9). Recovery rates were somewhat variable for endrin and endrin ketone. Overall, the SPE tubes and the extraction procedure provided good results which met the criteria needed for pesticides extractions. Contaminant level (10 ng/mL) extractions exhibited few interferences (Figure J), and lot-to-lot variability in recovery rates was acceptable.

We prepare these highly inert ENVI-8 solid phase extraction tubes on request.

**Table 8. Solid Phase Extraction of Pesticides for “Quick Turnaround” Screening Method**

extraction tube:	0.5 g ENVI-8 packing in 6 mL glass tube, Teflon frits
conditioning:	3 mL methanol, then 2 mL 5% methanol in water attach 60 mL sample reservoir
sample addition:	100 mL aqueous sample (pH adjusted to 5.0-7.0) add 5 mL methanol, then 10 µL of 5.0 µg/mL decachlorobiphenyl in methanol (SMC) introduce into 60 mL reservoir pass through SPE tube at 5 mL/min.
drying:	dry tube under <u>clean</u> nitrogen flow for 2-3 min., using Visidry Drying Attachment
elution:	add 5 mL hexane:acetone (90:10), allow to soak into packing bed allow 2 min. static extraction (no vacuum) add 5 mL hexane:acetone (90:10), begin dropwise elution (low vacuum) concentrate eluate to 1 mL, using <u>clean</u> nitrogen

**Table 9. High Recovery of Pesticides by Solid Phase Extraction**

Pesticide	SPE Packing Capacity Level (250 ng each pesticide)			Contamination Level (10 ng each pesticide)		
	Recovery (%) <sup>†</sup>	Standard Deviation <sup>‡</sup>	Coef. Variation	Recovery (%) <sup>†</sup>	Standard Deviation <sup>‡</sup>	Coef. Variation
α-BHC	91.4	7.0	7.7	84.6	9.2	10.9
β-BHC	100.1	10.1	10.1	— <sup>v</sup>	—	—
γ-BHC	94.0	6.1	6.4	88.2	10.8	12.2
δ-BHC	92.9	7.2	7.7	85.1	7.3	8.5
Heptachlor	95.0	5.7	6.0	86.6	6.4	7.3
Aldrin	94.9	4.8	5.1	84.7	13.9	16.4
Heptachlor epoxide	96.8	4.2	4.4	96.3	5.6	5.8
γ-Chlordane	97.4	4.5	4.6	85.8	6.3	7.3
Endosulfan I	94.6	4.7	4.9	84.8	8.5	10.1
α-Chlordane	96.4	4.6	4.7	90.2	7.4	8.2
Dieldrin	98.2	3.8	3.9	88.6	6.0	6.8
4,4'-DDE	99.9	4.2	4.2	80.1	7.7	9.6
Endrin	97.9	13.2	13.5	77.8	20.1	25.9
Endosulfan II	98.2	3.8	3.8	90.0	8.0	8.9
4,4'-DDD	104.4	5.4	5.2	98.6 <sup>o</sup>	10.9	11.1
Endrin aldehyde	101.0	5.5	5.5	98.6 <sup>o</sup>	10.9	11.1
Endosulfan sulfate	104.6	3.9	3.7	96.2	7.9	8.3
4,4'-DDT	107.9	4.9	4.5	95.3	13.4	14.1
Endrin ketone	110.4	14.3	12.9	104.6	29.9	28.6
Methoxychlor	108.4	3.2	2.9	93.4	13.1	14.0
Decachlorobiphenyl (SMC)	101.0	7.0	6.9	72.9	14.0	19.3

<sup>†</sup>Mean for 5 lots.

<sup>‡</sup>n = 10 extractions.

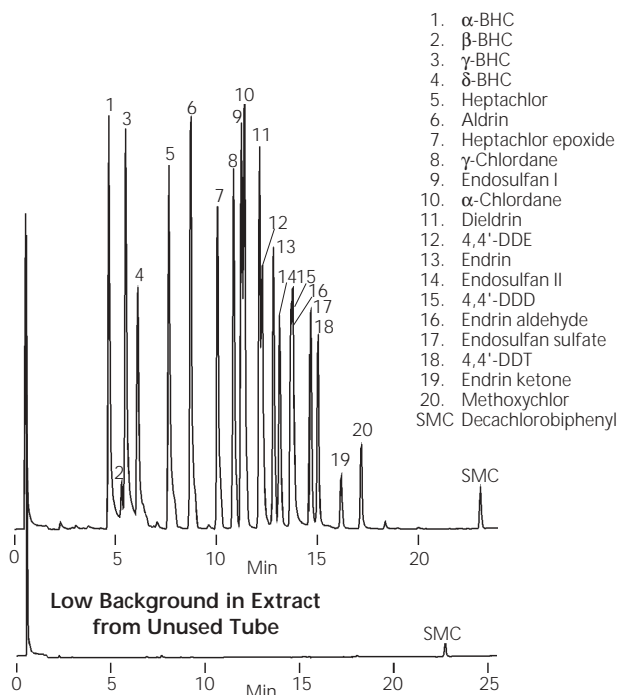
<sup>v</sup>Could not be monitored under split-splitless, heated injection conditions; cold on-column injection should reduce problem.

<sup>o</sup>Compounds coelute, area counts not separable at 10 ng/mL each.

## Figure J. Extracted Pesticides

Low Concentration: 10 ng each/mL water

column: PTE-5 QTM, 15 m x 0.53 mm I.D., 0.5 µm film (25355)  
 oven: 150 °C (0.5 min.) to 275 °C at 5 °C/min., hold 5 min.  
 det.: ECD  
 injection: extract from procedure in Table 8, split-splitless injection  
 (hold 45 sec.), 200 °C



713-1169, 1168

### Column Quality

Bonded phase SPB-608 columns ensure high thermal stability (maximum temperature is 300 °C) and low bleed – even when used with sensitive electron capture detectors. When necessary, an SPB-608 column can be rinsed with a nonpolar solvent to remove deposits of nonvolatile material that can affect performance.

To ensure reproducible performance from one column to the next, we test each SPB-608 column with a mixture of the 16 chlorinated pesticides in EPA Method 608. We measure relative responses for endrin and 4,4'-DDT, to ensure minimal breakdown of these unstable components. Our testing criteria also include specifications for overall analysis time and for separation of closely eluting pesticides. To confirm that column performance is satisfactory, we include a chromatogram of the 16 Method 608 pesticides with each column.

## Ordering Information:

Description	Cat. No.
<b>Capillary Columns</b>	
SPB-608, 15 m x 0.20 mm I.D., 0.20 µm film	prepared on request
SPB-608, 30 m x 0.25 mm I.D., 0.25 µm film	24103-U
SPB-608, 15 m x 0.53 mm I.D., 0.50 µm film	25310-U
SPB-608, 30 m x 0.53 mm I.D., 0.50 µm film	25312
SPB-5, 15 m x 0.20 mm I.D., 0.20 µm film	24165-U
SPB-5, 30 m x 0.25 mm I.D., 0.25 µm film	2-034
PTE™-5 QTM, 15 m x 0.53 mm I.D., 0.5 µm film	25355
<b>SPME Holder*</b>	
For manual sampling	57330-U
For Varian 8100/8200 AutoSampler	57331
<b>SPME Fiber Assembly (pk. of 3)</b>	
100 µm polydimethylsiloxane coating	
For manual sampling	57300-U
For Varian 8100/8200 AutoSampler	57301
<b>Solid Phase Extraction Tubes</b>	
ENVI-Carb, 3 mL, 250 mg packing, pk. of 54	57088
ENVI-Carb, 6 mL, 250 mg packing, pk. of 30	57092
ENVI-Carb, 6 mL, 500 mg packing, pk. of 30	57094
ENVI-8, 6 mL, 0.5 g packing, glass tube, Teflon frits	prepared on request
<b>AutoTrace SPE Tube Adapters</b>	
For using ENVI-Carb tubes with Zymark® AutoTrace unit.	
3 mL, pk. of 6	57123
6 mL, pk. of 6	57126
<b>Visiprep DL Disposable Liner</b>	
Solid Phase Extraction Vacuum Manifold	
12-port model	57044
24-port model	57265
<i>Disposable Teflon Solvent Guides, pk. of 100</i>	57059
<b>Visidry Drying Attachment</b>	
	57100-U
For conversion kits for using 0.53 mm I.D. capillary columns in your packed column chromatograph, refer to the Supelco catalog or call our sales department.	
*Initially you must order both holder and fiber assembly. Holder is reusable indefinitely; fiber lifetime depends on the nature of the analytes and the complexity of the sample matrix. Use of SPME with a Varian 8100/8200 AutoSampler requires an SPME upgrade kit (available from Varian).	
<b>Calibration Standards</b>	
<b>EPA 608 Pesticides Calibration Mix</b>	
20 µg/mL each component in hexane:toluene (50:50).	
Aldrin	Dieldrin
α-BHC	Endosulfan I
β-BHC	Endosulfan II
γ-BHC (Lindane)	Endosulfan sulfate
δ-BHC	Endrin
4,4'-DDD	Endrin aldehyde
4,4'-DDE	Heptachlor
4,4'-DDT	Heptachlor epoxide (isomer B)
Description	Cat. No.
1 mL	47915-U

## Calibration Standards (cont'd.)

### EPA Pesticide Mix

In methanol:methylene chloride, 98:2.

Aldrin, 10 µg/mL	Dieldrin, 20 µg/mL
α-BHC, 10 µg/mL	Endosulfan I, 20 µg/mL
β-BHC, 10 µg/mL	Endosulfan II, 20 µg/mL
γ-BHC (Lindane), 10 µg/mL	Endosulfan sulfate, 60 µg/mL
δ-BHC, 10 µg/mL	Endrin, 20 µg/mL
4,4'-DDD, 60 µg/mL	Endrin aldehyde, 60 µg/mL
4,4'-DDE, 20 µg/mL	Heptachlor, 10 µg/mL
4,4'-DDT, 60 µg/mL	Heptachlor epoxide (isomer B), 10 µg/mL

Description	Cat. No.
1 mL	48858-U

### EPA 608-S Organochlorine Pesticides and PCBs Kit

Individually packaged 1 mL solutions in methanol, except as noted.

Aldrin, 20 µg/mL	Chlordane, 20 µg/mL
Aroclor 1016, 200 µg/mL	4,4'-DDD, 20 µg/mL
Aroclor 1221, 200 µg/mL	4,4'-DDE, 20 µg/mL
Aroclor 1232, 200 µg/mL	4,4'-DDT, 20 µg/mL
Aroclor 1242, 200 µg/mL	Dieldrin, 20 µg/mL
Aroclor 1248, 200 µg/mL	Endosulfan sulfate, 20 µg/mL
Aroclor 1254, 200 µg/mL	Endrin, 20 µg/mL
Aroclor 1260, 200 µg/mL	Endrin aldehyde, 20 µg/mL
α-BHC, 20 µg/mL	Heptachlor, 20 µg/mL
β-BHC, 20 µg/mL*	Heptachlor epoxide (isomer B), 20 µg/mL
γ-BHC (Lindane), 20 µg/mL	Toxaphene, 20 µg/mL
δ-BHC, 20 µg/mL*	

Plus: EPA Pesticide Mix (4-8858)  
Aroclor Mix 1 (4-8861)  
Aroclor Mix 2 (4-8862)

\* In methanol:methylene chloride, 98:2.

Description	Cat. No.
Kit	48753-U

### EPA 608-N Organochlorine Pesticides and PCBs Kit

Individually packaged neat compounds in ampuls and vials.

Aldrin, 0.1 g	4,4'-DDD, 1 g
Aroclor 1016, 0.05 g	4,4'-DDE, 1 g
Aroclor 1221, 0.05 g	4,4'-DDT, 1 g
Aroclor 1232, 0.05 g	Dieldrin, 0.05 g
Aroclor 1242, 0.05 g	Endosulfan I, 0.025 g
Aroclor 1248, 0.05 g	Endosulfan II, 0.025 g
Aroclor 1254, 0.05 g	Endrin, 0.1 g
Aroclor 1260, 0.05 g	Heptachlor, 1 g
γ-BHC (Lindane), 1 g	Heptachlor epoxide (isomer B), 0.1 g
Chlordane, 1 g	Toxaphene, 1 g

Description	Cat. No.
Kit	48763

### TCL Pesticides Mix

2000 µg/mL each component in toluene:hexane (50:50).

Aldrin	Endosulfan I
α-BHC	Endosulfan II
β-BHC	Endosulfan sulfate
δ-BHC	Endrin
γ-BHC (Lindane)	Endrin aldehyde
4,4'-DDD	Endrin ketone
4,4'-DDE	Heptachlor
4,4'-DDT	Heptachlor epoxide
Dieldrin	Methoxychlor

Description	Cat. No.
1 mL	48913

### DDT-Endrin Mix

500 µg/mL each component in methanol.

4,4'-DDT	Endrin
----------	--------

Description	Cat. No.
1 mL	48282

### Pesticide Standard Mix A

In hexane:toluene (98:2).

α-BHC, 5 µg/mL	Endosulfan I, 5 µg/mL
γ-BHC, 5 µg/mL	Endrin, 10 µg/mL
4,4'-DDD, 10 µg/mL	Heptachlor, 5 µg/mL
4,4'-DDT, 10 µg/mL	Methoxychlor, 50 µg/mL
Dieldrin, 10 µg/mL	

Description	Cat. No.
1 mL	48796

### Pesticide Standard Mix B

In hexane:toluene (99:1).

Aldrin, 5 µg/mL	Endosulfan II, 10 µg/mL
β-BHC, 5 µg/mL	Endosulfan sulfate, 10 µg/mL
δ-BHC, 5 µg/mL	Endrin aldehyde, 10 µg/mL
α-Chlordane, 5 µg/mL	Endrin ketone, 10 µg/mL
γ-Chlordane, 5 µg/mL	Heptachlor epoxide (isomer B), 5 µg/mL
4,4'-DDE, 10 µg/mL	

Description	Cat. No.
1 mL	48196

For an extensive selection of chlorinated and other pesticide reference standards, refer to the Supelco catalog or call our sales department.

### References

- US EPA Test Methods: Methods for Organic Chemical Analysis of Municipal and Industrial Wastewater (EPA Pub. No. 600/4-82-057). Environmental Monitoring and Support Laboratory, Office of Research and Development, USEPA, Cincinnati, Ohio 45268 USA (July 1982).
- US EPA Contract Laboratory Program Statement of Work for Organics Analysis, Multi-Media, Multi-Concentration, Document Number OLM01.0, Including Revisions OLM01.1 (December 1990) and OLM01.1.1 (February 1991).
- Andreolini, F., *et al.*, *Anal. Chem.* **59**: 1720 (1987).
- Fillion, J. R. Hindle, M. Lacroix, and J. Selwyn, *Journal AOAC International*, **78**: 1252-1266 (1995).
- Chaput, D., *J. Assoc. Official Analytical Chemists*, **71**: 542-546 (1988).

References not available from Supelco.

### Acknowledgment

The extraction process in Table 6 and data in Table 7 were provided by J. Fillion and J.C. Selwyn, Agriculture and Agri-Food Canada, Ottawa, Ontario.

### Trademarks

ChromFax, ENVI, GlasSeal, PTE, SP, SPB, SUPELCOPORT, Visidry, Visiprep – Sigma-Aldrich Co.  
Blazer – BASF  
Celite – Celite Corp.  
Silvex – Silverline Manufacturing Co., Inc.  
Teflon – E.I. du Pont de Nemours & Co., Inc.  
Zymark – Zymark  
Fused silica columns manufactured under HP US Pat. No. 4,293,415.

For expert answers to your questions contact our  
Technical Service Department:

Phone 800-359-3041, 814-359-3041

Fax 800-359-3044, 814-359-5468

E-mail [techservice@sial.com](mailto:techservice@sial.com)

To download Supelco's free technical literature visit us at  
[www.sigma-aldrich.com/supelco-literature](http://www.sigma-aldrich.com/supelco-literature)

---

**Order/Customer Service** 800-247-6628, 800-325-3010  
Fax 800-325-5052 • E-mail [supelco@sial.com](mailto:supelco@sial.com)

**Technical Service** 800-359-3041, 814-359-3041  
Fax 800-359-3044, 814-359-5468 • E-mail [techservice@sial.com](mailto:techservice@sial.com)

**SUPELCO • 595 North Harrison Road, Bellefonte, PA 16823-0048 • 814-359-3441**

*We are committed to the success of our Customers, Employees and Shareholders through leadership in Life Science, High Technology and Service.*  
The SIGMA-ALDRICH Family  **SIGMA**  **ALDRICH**  **Fluka**  **Riedel-deHaen**  **SUPELCO**  **ISOTEC**

©2005 Sigma-Aldrich Co. Printed in USA. Supelco brand products are sold through Sigma-Aldrich, Inc. Sigma-Aldrich, Inc. warrants that its products conform to the information contained in this and other Sigma-Aldrich publications. Purchaser must determine the suitability of the product(s) for their particular use. Additional terms and conditions may apply. Please see reverse side of the invoice or packing slip. Supelco is a registered trademark of Sigma-Aldrich Co.

BJF T100841C

 **SUPELCO**<sup>®</sup>  
[sigma-aldrich.com/supelco](http://sigma-aldrich.com/supelco)