



# Empore™

## 96-Well SPE Plate, Universal Resin Membrane

data sheet



### Advantages

- Generic methodology
- Advanced membrane technology
- Reduced solvent and elution volumes
- Virtually no fines in eluate
- Fast and easy to use

### Applications

- Drug development
- Bioanalysis
- Food & beverage

### General Product Description

3M™ Empore™ High Performance 96 Well Extraction Disk Plates provide a simple route to high throughput solid phase extraction (SPE). Extraction can be done in approximately one hour or less. Each well has a unique 3M particle-loaded membrane, instead of a packed bed sorbent mass. For good and consistent flow rates, a special graded density pre-filter is placed just above the membrane. If mobile phase or a compatible solution is used as eluent, direct injection onto chromatographic systems is possible.

### Sorbent Characteristics

The 3M **Universal Resin sorbent** is a terpolymer based on SDB which contains polar functional groups. This promotes high retention of a wide range of analytes, reducing method development time and facilitating a generic approach to sample preparation.

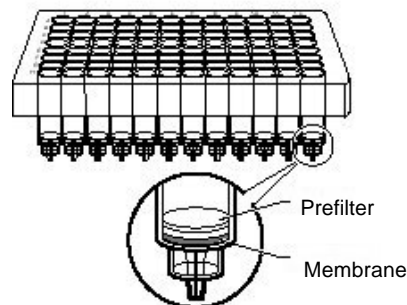
# General Specification

## 3M™ Empore™ Universal Resin Membrane

<b>Sorbent</b>	Universal Resin
<b>Composition (w/w)</b>	90% sorbent, 10% PTFE
<b>Thickness</b>	0.75 mm
<b>Diameter</b>	5.5 mm

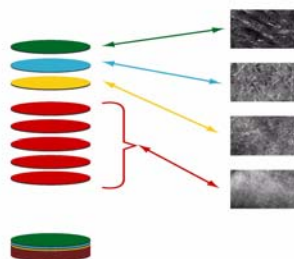
<b>Membrane pore size</b>	2 µm (nominal)
<b>Bed volume</b>	18 µl

<b>Sorbent particle size</b>	30-60 µm (44 µm nominal)
<b>Sorbent pore size</b>	62 Å (nominal)
<b>Sorbent mass</b>	8 mg (nominal)
<b>Average % carbon</b>	n/a
<b>pH stability</b>	2-12



## Graded-Density Pre-filter

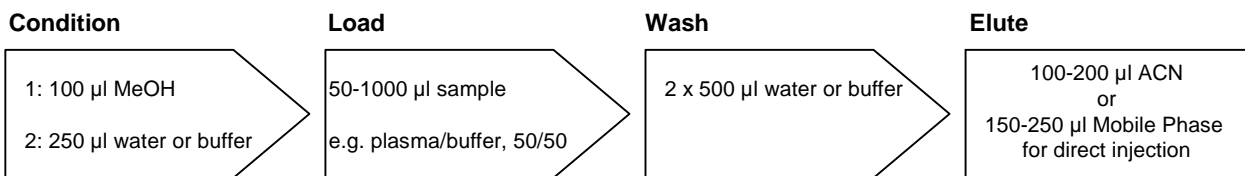
<b>Filter material</b>	Polypropylene
<b>Number of layers</b>	8
<b>Free volume</b>	12 µl
<b>Filtration efficiency</b>	98% at 10 µm 50% at 2 µm



## 96-Well Plate

<b>Construction</b>	Polypropylene	
<b>Reservoir volume</b>	1.2 mL Standard-well	Part number: 6045
	2.5 mL Deep-well	Part number: 6345

## General Protocol\*



\* Standard-well plate

## Further Information

**3M**

**Bioanalytical**

3M Center, Building 270-2A-08  
 St. Paul, MN 55144-1000  
 USA  
 Internet: [www.3m.com/empore](http://www.3m.com/empore)

**Purchasing and Technical Information**

Tel 1-888-509-5330 Fax 1-651-736-4882

All statements, technical information and recommendations contained in this literature are based on tests conducted with 3M approved equipment and are believed to be reliable. However, the accuracy or completeness of the tests is not guaranteed. THE FOLLOWING IS MADE IN LIEU OF ALL WARRANTIES, EXPRESSED OR IMPLIED, INCLUDING THE IMPLIED WARRANTIES OF MERCHANTABILITY AND FITNESS FOR A PARTICULAR PURPOSE. The seller's and manufacturer's only obligation will be to replace the quantity of the product proved to be defective. Neither the seller nor 3M will be liable for any injury, loss or damage, direct or consequential, arising out of the use of or the inability to use the product. Before using, the user must determine the suitability of the product for his or her intended use.

3M and Empore are registered trademarks of 3M.