



INTRODUCING

# Discovery HS C18 HPLC Columns, 120Å; 3µm, 5µm, and 10µm particle sizes available

- Specifically developed for pharmaceutical analysis and purification
- Ideal for LC/MS applications - No detectable bleed (as independently tested)
- Highly stable to ensure excellent run-to-run and lot-to-lot reproducibility and long column life
- Scalable from analytical to prep

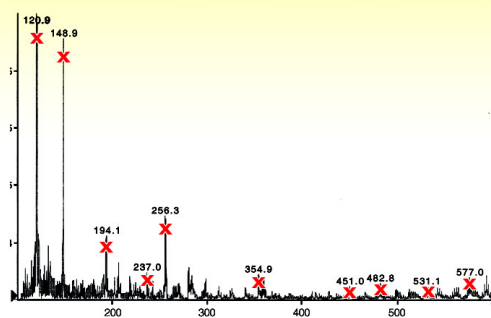
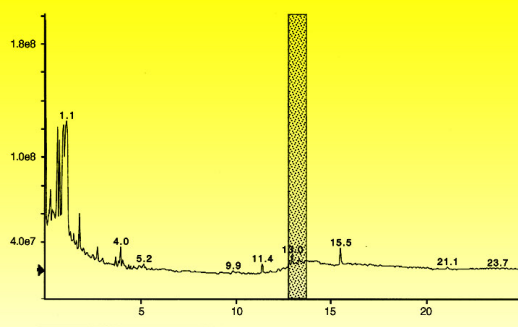
HERE'S THE PROOF

## NO DETECTABLE LC/MS BLEED

### Discovery HS C18

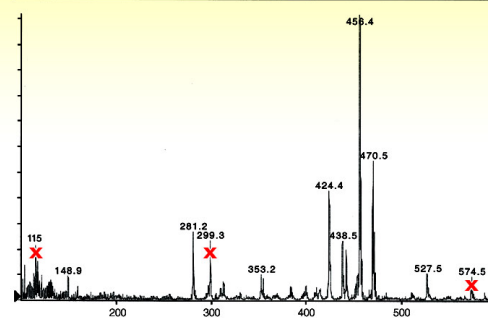
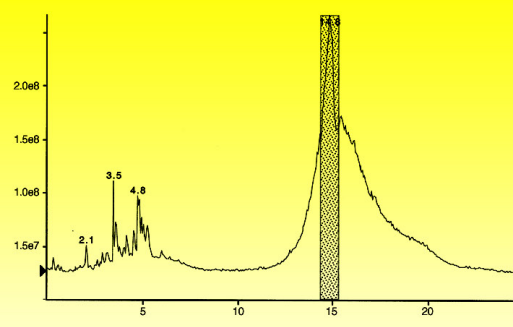
No TIC Baseline rise.  
Essentially no m/z peaks generated from column ("x" indicates peaks also found in blank run).

Column: Discovery HS C18 and Conventional C18, 5cm x 4.6mm, 3µm; Mobile Phase: 15 min. gradient from 0-100% MeOH in 0.1% TFA; Flow Rate: 1mL/min; Temp: ambient, esi+ ion.



### Competitor C18

TIC Baseline rise can interfere with sensitivity, and quantitation measurements. Bleed m/z peaks could coincidentally interfere with "real" peaks.

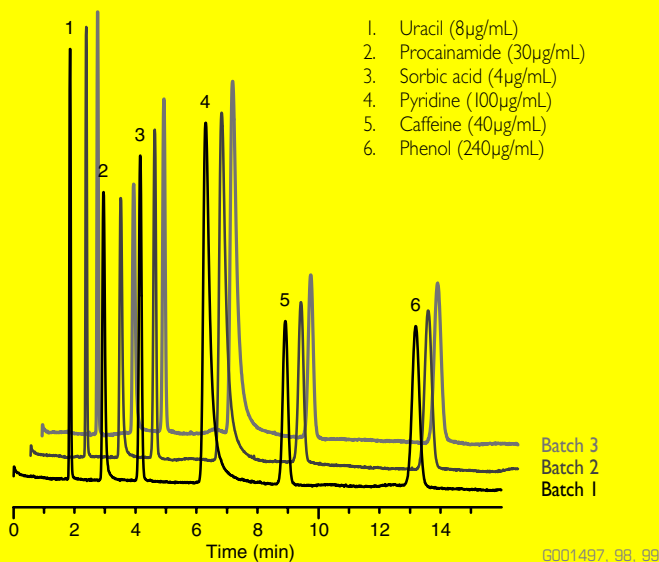


(work conducted by Dr. Shane Needham, Alturas Analytics, Moscow, ID)

G001413-14

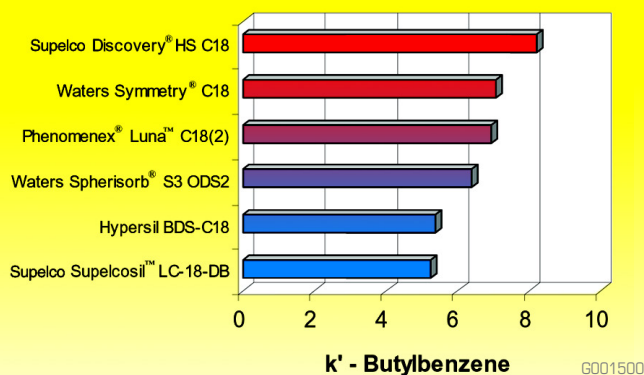
## LOT TO LOT REPRODUCIBILITY OF DISCOVERY HS C18

Column: Discovery HS C18, 15cm x 4.6mm, 5µm; Mobile Phase: 80% 10mM ammonium acetate, pH 6.8 : 20% MeOH; Flow Rate: 1mL/min; Temp: 35°C; Detection: 254nm; Injection: 1µL



## GREATER HYDROPHOBIC RETENTION COMPARED TO OTHER POPULAR C18 PHASES

Columns: 7.5cm x 4.6mm, 3µm/3.5µm; Mobile Phase: 35:65 - H<sub>2</sub>O:ACN; Flow Rate: 2mL/min; Detection: 254nm



## ORDERING INFORMATION:

### 3µm Discovery HS C18 HPLC Columns

ID (mm)	Length (cm)	Cat. No.
2.1	5	569253-U
2.1	7.5	569254-U
2.1	10	CUSTOM
2.1	15	569255-U
4.6	5	569250-U
4.6	7.5	569251-U
4.6	10	CUSTOM
4.6	15	569252-U

### 5µm Discovery HS C18 HPLC Columns

ID (mm)	Length (cm)	Cat. No.
2.1	5	568500-U
2.1	10	568501-U
2.1	15	568502-U
2.1	25	568503-U
4.0	5	568510-U
4.0	10	568511-U
4.0	15	568512-U
4.0	25	568513-U
4.6	5	568520-U
4.6	10	568521-U
4.6	15	568522-U
4.6	25	568523-U
10.0	5	568530-U
10.0	10	568531-U
10.0	15	568532-U
10.0	25	568533-U
21.2	5	568540-U
21.2	10	568541-U
21.2	15	568542-U
21.2	25	568543-U

### 10µm Discovery HS C18 HPLC Columns

ID (mm)	Length (cm)	Cat. No.
10.0	5	568630-U
10.0	10	568631-U
10.0	15	568632-U
10.0	25	568633-U
21.2	5	568640-U
21.2	10	568641-U
21.2	15	568642-U
21.2	25	568643-U

### 2cm Supelguard Cartridges with Discovery HS C18 Packings

Particle Size/ID	3µm	5µm
2.1mm		
2 Pack	569276-U	568570-U
Kit	569277-U	568571-U
4.0mm		
2 Pack	569274-U	568572-U
Kit	569275-U	568573-U

### 1cm Supelguard Cartridges with Discovery HS C18 Packings

Particle Size/ID	5µm	10µm
10mm	568574-U	568674-U

## TRADEMARKS

Discovery, Supelcosil, and Supelguard are trademarks of Sigma-Aldrich Co.  
Waters Spherisorb and Waters Symmetry are registered trademarks of Waters Corp.  
Phenomenex is a registered trademark of Phenomenex, Inc.  
Luna is a trademark of Phenomenex, Inc.  
Hypersil is a registered trademark of Hypersil Limited.  
Prilosec is a registered trademark of Astra AB.  
Prozac is a registered trademark of Dista Products Company, Division of Eli Lilly and Company.

[sigma-aldrich.com/supelco](http://sigma-aldrich.com/supelco)

Order/Customer Service 800-247-6628, 800-325-3010 • Fax 800-325-5052 • E-mail [supelco@sial.com](mailto:supelco@sial.com)  
Technical Service 800-359-3041, 814-359-3041 • Fax 800-359-3044, 814-359-5468 • E-mail [techservice@sial.com](mailto:techservice@sial.com)  
SUPELCO • Supelco Park, Bellefonte, PA 16823-0048 • 814-359-3441



We are committed to the success of our Customers, Employees and Shareholders through leadership in Life Science, High Technology and Service.

The SIGMA-ALDRICH Family



© 2001 Sigma-Aldrich Co. Printed in USA. Supelco brand products are sold through Sigma-Aldrich, Inc. Sigma-Aldrich, Inc. warrants that its products conform to the information contained in this and other Sigma-Aldrich publications. Purchaser must determine the suitability of the product(s) for their particular use. Additional terms and conditions may apply. Please see reverse side of the invoice or packing slip.



T401095A  
EHU