



INTRODUCING

Discovery HS F5 HPLC Columns, 120Å; 3µm, 5µm and 10µm particle sizes available

- The Discovery HS F5 is a unique pentafluorophenylpropyl terminated reversed phase column specifically developed for pharmaceutical analysis and purification
- Unique retention and selectivity compared to C18 phases
- Scalable from analytical to prep

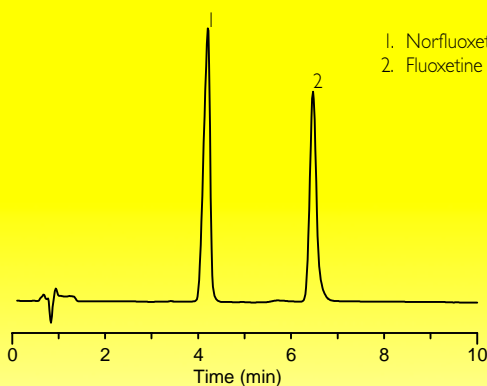
HERE'S THE
PROOF

PHARMACEUTICAL APPLICATIONS

Under identical mobile phase conditions, the Discovery HS F5 phase clearly shows unique retention and selectivity versus C18, for nitrogen containing, fluorinated compounds such as Prozac®.

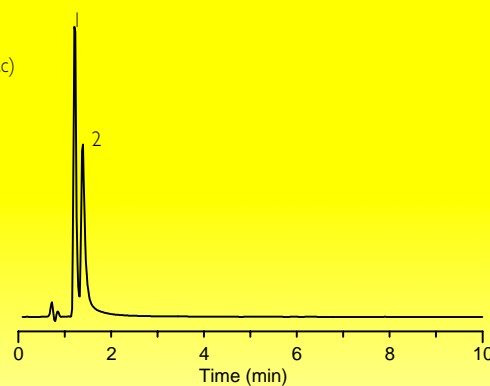
Column: Discovery HS F5 and Conventional C18, 15cm x 4.6mm, 5µm; Mobile Phase: 20% 10mM K_2HPO_4 / KH_2PO_4 , pH 7 : 80% MeCN; Flow Rate: 2mL/min; Temp: 35°C; Detection: 200nm; Injection: 10µL (50µg/mL for each analyte)

Discovery HS F5



G001524

Conventional C18 Phase



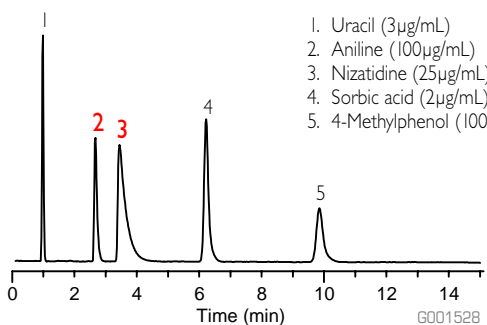
G001525

ACIDIC AND BASIC COMPOUND MIX

Discovery HS F5 shows unique retention and selectivity compared to conventional C18 phases. Note the elution reversal and the greater retention of aniline and nizatidine (peaks 2 and 3) on the F5 phase.

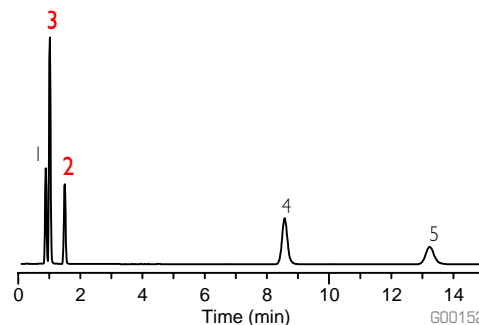
Columns: Discovery HS F5 and Conventional C18, 15cm x 4.6mm, 5µm; Mobile Phase: 85% 10mM ammonium formate, 0.1% formic acid, pH 3.3 : 15% MeCN; Flow Rate: 2mL/min; Temp: 35°C; Detection: 254nm; Injection: 10µL

Discovery HS F5



G001528

Conventional C18 Phase



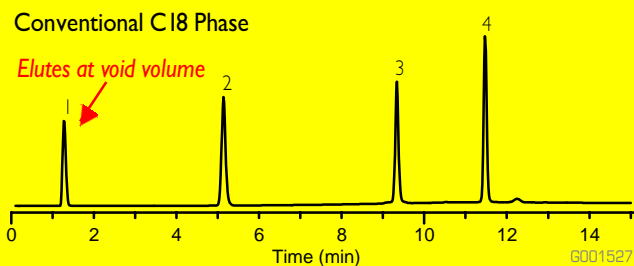
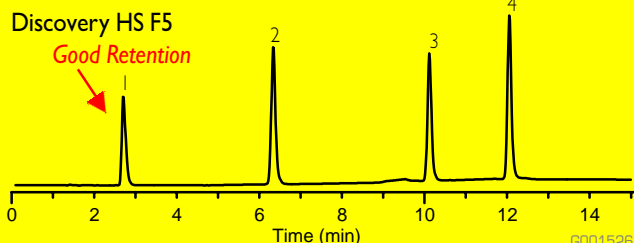
G001529

EXCELLENT RETENTION OF MULTIFUNCTIONAL COMPOUNDS

The Discovery HS F5 shows greater retention, versus C18, of the multifunctional compounds shown in these chromatograms. Compounds that elute too closely to the void volume (peak 1) on C18 columns are sufficiently retained by Discovery HS F5.

Column: Discovery HS F5 and Conventional C18, 15cm x 4.6mm, 5µm; Mobile Phase: (A) 10mM ammonium acetate, 0.1% formic acid; (B) MeOH; Flow Rate: 1.5mL/min; Temp: 35°C; Detection: 254nm; Injection: 10µL

Time (min)	(A):(B)	
0	90:10	1. p-Aminophenol (100µg/mL)
3	90:10	2. Acetaminophen (10µg/mL)
10	50:50	3. Acetanilide (10µg/mL)
15	50:50	4. Phenacetin (10µg/mL)



ORDERING INFORMATION:

3µm Discovery HS F5 HPLC Columns

ID (mm)	Length (cm)	CAT. NO.
2.1	5	567500-U
2.1	10	567502-U
2.1	15	567503-U
4.0	5	567530-U
4.0	10	567531-U
4.0	15	567532-U
4.6	5	567504-U
4.6	10	567506-U
4.6	15	567507-U

5µm Discovery HS F5 HPLC Columns

ID (mm)	Length (cm)	CAT. NO.
2.1	5	567508-U
2.1	10	567510-U
2.1	15	567511-U
2.1	25	567512-U
4.0	5	567533-U
4.0	10	567534-U
4.0	15	567535-U
4.0	25	567536-U
4.6	5	567513-U
4.6	10	567515-U
4.6	15	567516-U
4.6	25	567517-U
10.0	5	567518-U
10.0	10	567519-U
10.0	15	567537-U
10.0	25	567520-U
21.2	5	567521-U
21.2	10	567539-U
21.2	15	567522-U
21.2	25	567523-U

10µm Discovery HS F5 HPLC Columns

ID (mm)	Length (cm)	CAT. NO.
10.0	5	567524-U
10.0	10	567538-U
10.0	15	567525-U
10.0	25	567526-U
21.2	5	567527-U
21.2	10	567540-U
21.2	15	567528-U
21.2	25	567529-U

2cm Supelguard Cartridges with Discovery HS F5 Packings

Particle Size/ID	3µm	5µm
2.1mm		
2 Pack	567570-U	567574-U
Kit	567571-U	567575-U
4.0mm		
2 Pack	567572-U	567576-U
Kit	567573-U	567577-U

1cm Supelguard Cartridges with Discovery HS F5 Packings

Particle Size/ID	5µm	10µm
10mm	567578-U	567580-U

TRADEMARKS

Discovery and Supelguard are trademarks of Sigma-Aldrich Co. Prozac is a registered trademark of Dista Products Company, Division of Eli Lilly and Company.

sigma-aldrich.com/supelco

Order/ Customer Service 800-247-6628, 800-325-3010 • Fax 800-325-5052 • E-mail supelco@sial.com
 Technical Service 800-359-3041, 814-359-3041 • Fax 800-359-3044, 814-359-5468 • E-mail techservice@sial.com
 SUPELCO • Supelco Park, Bellefonte, PA 16823-0048 • 814-359-3441

ISO 9001
REGISTERED

We are committed to the success of our Customers, Employees and Shareholders through leadership in Life Science, High Technology and Service.

The SIGMA-ALDRICH Family



© 2001 Sigma-Aldrich Co. Printed in USA. Supelco brand products are sold through Sigma-Aldrich, Inc. Sigma-Aldrich, Inc. warrants that its products conform to the information contained in this and other Sigma-Aldrich publications. Purchaser must determine the suitability of the product(s) for their particular use. Additional terms and conditions may apply. Please see reverse side of the invoice or packing slip.



T401096A
EHV