

MonoBeads[®] Support/Mono Q[®] and Mono S[®] Ion Exchange Chromatography Columns

Product Specification

Pharmacia Biotech chromatographic media based on MonoBeads support provide outstanding reproducibility that chromatographers can rely on. Mono Q and Mono S columns are highly efficient, pH-stable columns designed for high performance ion exchange separations of proteins, peptides, and polynucleotides, in applications including peptide mapping and monoclonal antibody purification. The unique properties of these columns are based on MonoBeads support – a beaded hydrophilic material with the narrowest particle size distribution of any chromatographic support: $10\pm 0.3\mu\text{m}$. This monodispersity permits high flow rates at relatively low backpressures. Stringent product testing ensures highly consistent performance from Mono Q and Mono S columns, prepared with these particles.

Pharmacia Biotech chemists test physical and chemical variables for the raw materials, the bulk gel, and the final column, to ensure that every column will behave as expected (Table 1). The electron micrograph in Figure A and the particle size distribution plot in Figure B show the monodispersity of MonoBeads support (1). The extremely narrow particle size distribution permits high flow rates at relatively low backpressures. Protein separation tests are run on every batch of bulk gel, to ensure that retention and selectivity are within specified limits. Although chromatographers very rarely use the full capacity of an ion exchange column, capacity is not allowed to fall outside specifications developed more than a decade ago, in order to maintain consistent performance from Mono Q columns (strong anion exchanger; quaternary amino functional groups remain equally charged over the column's entire useful pH range) and Mono S columns (strong cation exchanger; sulfonic acid functional groups). Figure C shows a typical batch test chromatogram for Mono Q packing material. Figure D shows the negligible variations in protein retention times and ion exchange capacity for Mono Q material, from lots produced in 1982 to lots produced in 1993. Lots of Mono S packing material are tested under conditions similar to those used for the Mono Q material.

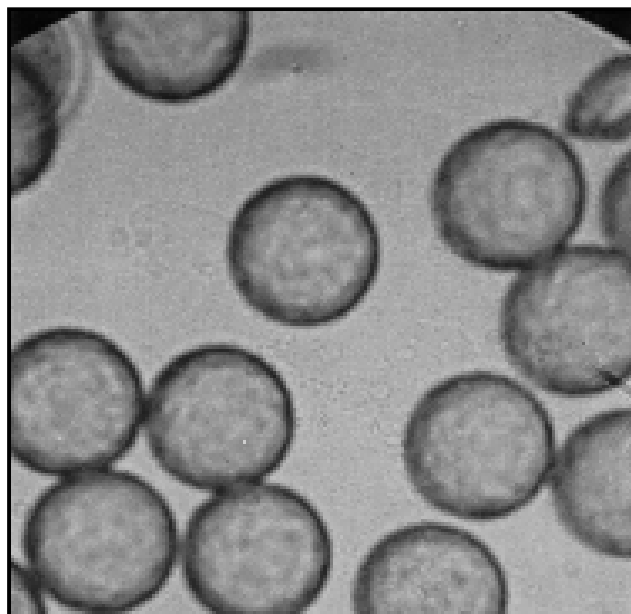
Table 1. Characteristics of Mono Q and Mono S Columns

Dimensions:	50 x 5mm
Bed Volume:	1mL
Flow Rate:	0.5-2mL/min
Max. Backpressure:	750psi (5MPa)
Temperature:	4°-40°C
pH:	2-12
Max. Loading Capacity:	25mg
Protein Binding Capacity:	65mg human serum albumin (Mono Q) 75mg immunoglobulin G (Mono S)
Typical Separation Times:	5-20 min

Since their introduction, MonoBeads support-based columns have proven their reliability and reproducibility. Mono Q and Mono S columns are manufactured to close, carefully maintained specifications, to make their routine use in preparative and analytical work highly reliable. Column stability, another important factor, also has been documented for Mono Q and Mono S columns (2). In the words of the Pharmacia Biotech chemists: "Quality assurance is an important part of the manufacturing process. Every step on the way to the final product is well documented. The exact result of those steps in the production that are subject to variation should be verified by tests. This will guarantee that a customer can always get media or columns with performance equal to those previously bought (3)."

If you are performing ion exchange separations of proteins, peptides, or polynucleotides, and wish to be sure of highly consistent performance from column to column, we highly recommend Mono Q and Mono S columns to you.

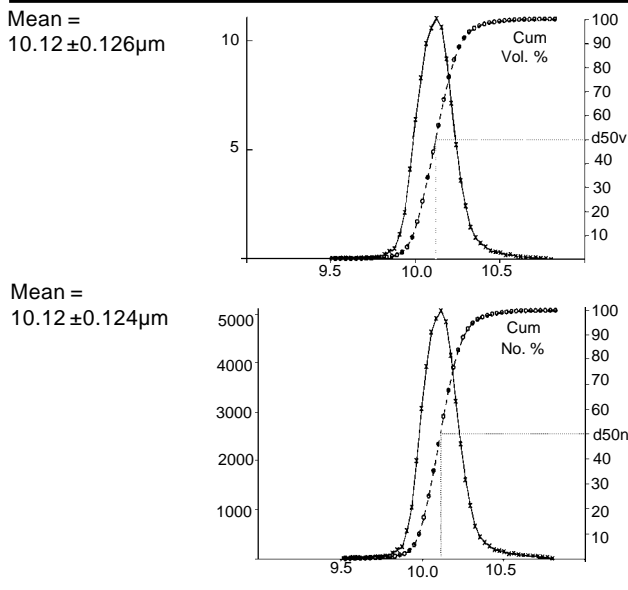
Figure A. MonoBeads Particles Are Highly Uniform in Size



995-0053a

Reproduced with permission of Pharmacia Biotech.

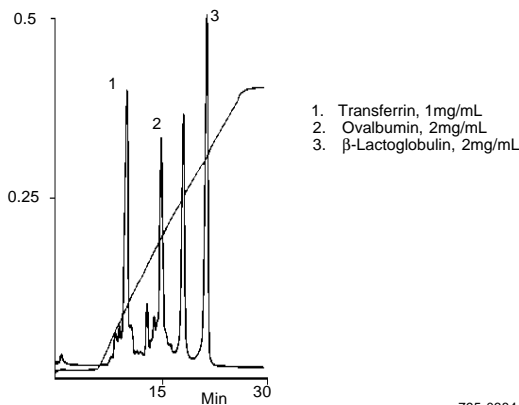
Figure B. Narrow Particle Size Distribution for MonoBeads Particles (Coulter Counter technique)



Reprinted from American Laboratory, Vol. 12, No. 12, page 40 (1994).
Copyright 1994 by International Scientific Communications, Inc.
Reproduced with permission of Pharmacia Biotech.

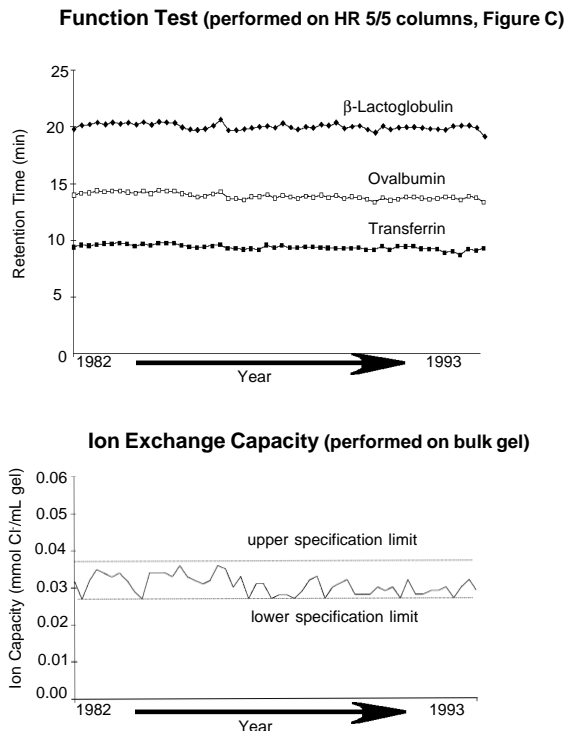
Figure C. Typical Results: Function Test for Mono Q Columns

Column: **Mono Q HR 5/5, 5cm x 5mm ID, 10μm particles**
Cat. No.: **54807**
Mobile Phase: A = 0.02M piperazine, pH 6.0
B = 0.02M piperazine/0.3M NaCl, pH 6.0
0.5% B to 100% B in 20 min
Flow Rate: 1mL/min
Det.: UV, 280nm



Reproduced with permission of Pharmacia Biotech.

Figure D. Mono Q Columns Are Highly Consistent



Reprinted from American Laboratory, Vol. 12, No. 12, page 40 (1994).
Copyright 1994 by International Scientific Communications, Inc.
Reproduced with permission of Pharmacia Biotech.

Ordering Information:

- Mono Q HR5/5 Column** **54807**
5cm x 5mm, 10μm particles
- Mono S HR5/5 Column** **54808**
5cm x 5mm, 10μm particles

References

1. Göransson, B., *Part. Part. Sys. Charact.* **7**: 6 (1990).
2. Johansson, B.-L. and N. Strafström, *J. Chromatogr.* **314**: 396 (1984).
3. Edlén, B., *Amer. Biotechnol. Lab.*, Nov. 1994 (pp 40-41).

Acknowledgements

Information and figures in this product specification were provided by B.Edlen, Pharmacia Biotech AB.

Trademarks

Mono Q, Mono S, MonoBeads - Pharmacia Biotech AB.

Contact our Technical Service Department
(phone 800-359-3041 or 814-359-3041, FAX 814-359-5468)
for expert answers to your questions.

For more information, or current prices, contact your nearest Supelco subsidiary listed below. To obtain further contact information, visit our website (www.sigma-aldrich.com), see the Supelco catalog, or contact Supelco, Bellefonte, PA 16823-0048 USA.

ARGENTINA · Sigma-Aldrich de Argentina, S.A. · Buenos Aires 1119 **AUSTRALIA** · Sigma-Aldrich Pty. Ltd. · Castle Hill NSW 2154 **AUSTRIA** · Sigma-Aldrich Handels GmbH · A-1110 Wien
BELGIUM · Sigma-Aldrich N.V./S.A. · B-2880 Bornem **BRAZIL** · Sigma-Aldrich Quimica Brasil Ltda. · 01239-010 São Paulo, SP **CANADA** · Sigma-Aldrich Canada, Ltd. · 2149 Winston Park Dr., Oakville, ON L6H 6J8
CZECH REPUBLIC · Sigma-Aldrich s.r.o. · 186 00 Praha 8 **DENMARK** · Sigma-Aldrich Denmark A/S · DK-2665 Vallensbaek Strand **FINLAND** · Sigma-Aldrich Finland/YA-Kemia Oy · FIN-00700 Helsinki
FRANCE · Sigma-Aldrich Chimie · 38297 Saint-Quentin-Fallavier Cedex **GERMANY** · Sigma-Aldrich Chemie GmbH · D-82041 Deisenhofen **GREECE** · Sigma-Aldrich (o.m.) Ltd. · Ilioupoli 16346, Athens
HUNGARY · Sigma-Aldrich Kft. · H-1067 Budapest **INDIA** · Sigma-Aldrich Co. · Bangalore 560 048 **IRELAND** · Sigma-Aldrich Ireland Ltd. · Dublin 24 **ISRAEL** · Sigma Israel Chemicals Ltd. · Rehovot 76100
ITALY · Sigma-Aldrich s.r.l. · 20151 Milano **JAPAN** · Sigma-Aldrich Japan K.K. · Chuo-ku, Tokyo 103 **KOREA** · Sigma-Aldrich Korea · Seoul **MALAYSIA** · Sigma-Aldrich (M) Sdn. Bhd. · 58200 Kuala Lumpur
MEXICO · Sigma-Aldrich Quimica S.A. de C.V. · 50200 Toluca **NETHERLANDS** · Sigma-Aldrich Chemie BV · 3330 AA Zwijndrecht **NORWAY** · Sigma-Aldrich Norway · Torshov · N-0401 Oslo
POLAND · Sigma-Aldrich Sp. z o.o. · 61-663 Poznań **PORTUGAL** · Sigma-Aldrich Quimica, S.A. · Sintra 2710 **RUSSIA** · Sigma-Aldrich Russia · Moscow 103062 **SINGAPORE** · Sigma-Aldrich Pte. Ltd.
SOUTH AFRICA · Sigma-Aldrich (pty) Ltd. · Jet Park 1459 **SPAIN** · Sigma-Aldrich Quimica, S.A. · 28100 Alcobendas, Madrid **SWEDEN** · Sigma-Aldrich Sweden AB · 135 70 Stockholm
SWITZERLAND · Supelco · CH-9471 Buchs **UNITED KINGDOM** · Sigma-Aldrich Company Ltd. · Poole, Dorset BH12 4QH
UNITED STATES · Supelco · Supelco Park · Bellefonte, PA 16823-0048 · Phone 800-247-6628 or 814-359-3441 · Fax 800-447-3044 or 814-359-3044 · email: supelco@sial.com