

# SRS-3000 Solvent Recovery System for HPLC

## Product Specification

- Recover and reuse clean mobile phase, dispose of only contaminated mobile phase.
- Reduce solvent purchase and disposal costs, save mobile phase preparation time, and help protect the environment.

### Supelco™ SRS-3000 Solvent Recovery System



995-0148

In a typical isocratic HPLC analysis, 80-90% of the mobile phase is uncontaminated and can be recycled. The Supelco SRS-3000 Solvent Recovery System is the most accurate, most reliable, easiest-to-use solvent recycling system available. A microprocessor-controlled switching valve in the SRS-3000 system monitors detector output and directs the detector effluent to the waste reservoir only when a peak is detected (Figure A). When the baseline falls below the threshold you select, the uncontaminated solvent is directed back to the mobile phase reservoir. Settings for baseline threshold, detection range, and delay time give you precise control of the switching valve. These settings can be saved in 10 method files.

### New Features/Benefits

#### Output validation

Tick marks on a second chromatogram, sent to a separate recording device (not included), indicate when the recycling valve position changes between "recycle" and "discard". This documents operations for GMP, ISO 9000, and other quality systems.

#### Selectable detector signal display units

Select % full scale, absorbance units, or millivolts, to match the recycler display with the detector.

#### Adjustable backlit liquid crystal display

Makes viewing the display easier.

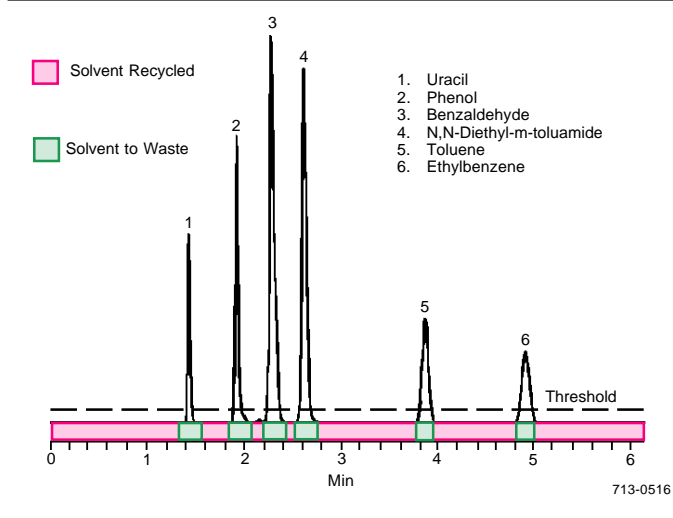
#### Autoclean valve (optional)

Automatically flushes and shuts down the HPLC system after the last analysis is completed. Makes cleanup easier; helps prolong the lifetime of columns, seals, check valves, and other components.

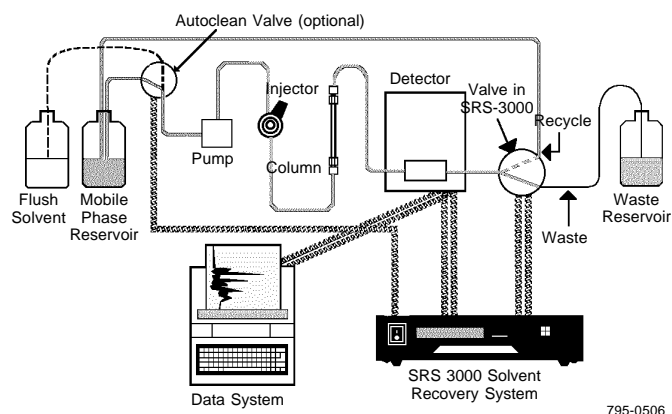
The SRS-3000 system can be fitted with a valve that enables you to flush your HPLC system with a wash solvent, then automatically shut down the system. The Autoclean valve is especially helpful if you have a single pump system and are using a mobile phase containing buffer or other salts. The Autoclean valve installs between the mobile phase reservoir and the pump (Figure B). It has two inlet lines, one for the mobile phase and one for the wash solvent. Step-by-step programming makes the Autoclean valve easy to use; coordination with the recycling valve ensures mobile phase will not be contaminated with wash solvent. You can order an SRS-3000 system with a factory-installed Autoclean valve, or you can order the system without an Autoclean valve and add this feature later, by ordering the Autoclean upgrade kit.\*

The SRS-3000 Solvent Recovery System includes a control unit with a switching valve, a power cord, a 2-lead signal cable (+/-), Teflon® tubing and fittings, and an instruction manual. In addition to these components, an SRS-3000 system equipped with an Autoclean valve includes the wash valve, a wash start cable, a pump remote stop cable, and additional tubing and fittings. The Autoclean upgrade kit includes all components needed to install and operate an Autoclean valve in an SRS-3000 system.

**Figure A. Recover 80% or More of the Mobile Phase Used In an Isocratic Analysis**



**Figure B. Installation Is Simple**



**Ordering Information:**

Description	Cat. No.
SRS-3000 Solvent Recovery System	57431
SRS-3000 system with Autoclean valve	57432
Autoclean upgrade kit*	57433
Switching valve assembly for SRS-3000 system	57435
Switching valve for SRS-2000 system	57426
Signal cable, 2-lead (+/-)	57427
Signal cable, 3-lead (+/-/ground)	57428
Fuse, replacement	57429

1. Connect SRS-3000 unit to detector signal output (cable is included).
2. Connect SRS-3000 unit to mobile phase and waste reservoirs and detector (Teflon tubing is included).
3. Set the threshold value and begin saving time and money.

**Trademarks**

Supelco – Supelco, Inc.  
Teflon – E.I. du Pont de Nemours & Co., Inc.

\*The Autoclean valve cannot be used with older (SRS-2000) systems.

Contact our Technical Service Department  
(phone 800-359-3041 or 814-359-3041, FAX 814-359-5468)  
for expert answers to your questions.

For more information, or current prices, contact your nearest Supelco subsidiary listed below. To obtain further contact information, visit our website ([www.sigma-aldrich.com](http://www.sigma-aldrich.com)), see the Supelco catalog, or contact Supelco, Bellefonte, PA 16823-0048 USA.

ARGENTINA • Sigma-Aldrich de Argentina, S.A. • Buenos Aires 1119 AUSTRALIA • Sigma-Aldrich Pty. Ltd. • Castle Hill NSW 2154 AUSTRIA • Sigma-Aldrich Handels GmbH • A-1110 Wien  
BELGIUM • Sigma-Aldrich N.V./S.A. • B-2880 Bornem BRAZIL • Sigma-Aldrich Quimica Brasil Ltda. • 01239-010 São Paulo, SP CANADA • Sigma-Aldrich Canada, Ltd. • 2149 Winston Park Dr., Oakville, ON L6H 6J8  
CZECH REPUBLIC • Sigma-Aldrich s.r.o. • 186 00 Praha 8 DENMARK • Sigma-Aldrich Denmark A/S • DK-2665 Vallensbaek Strand FINLAND • Sigma-Aldrich Finland/YA-Kemia Oy • FIN-00700 Helsinki  
FRANCE • Sigma-Aldrich Chimie • 38297 Saint-Quentin-Fallavier Cedex GERMANY • Sigma-Aldrich Chemie GmbH • D-82041 Deisenhofen GREECE • Sigma-Aldrich (o.m.) Ltd. • Ilioupoli 16346, Athens  
HUNGARY • Sigma-Aldrich Kft. • H-1067 Budapest INDIA • Sigma-Aldrich Co. • Bangalore 560 048 IRELAND • Sigma-Aldrich Ireland Ltd. • Dublin 24 ISRAEL • Sigma Israel Chemicals Ltd. • Rehovot 76100  
ITALY • Sigma-Aldrich s.r.l. • 20151 Milano JAPAN • Sigma-Aldrich Japan K.K. • Chuo-ku, Tokyo 103 KOREA • Sigma-Aldrich Korea • Seoul MALAYSIA • Sigma-Aldrich (M) Sdn. Bhd. • 58200 Kuala Lumpur  
MEXICO • Sigma-Aldrich Quimica S.A. de C.V. • 50200 Toluca NETHERLANDS • Sigma-Aldrich Chemie BV • 3330 AA Zwijndrecht NORWAY • Sigma-Aldrich Norway • Torshov • N-0401 Oslo  
POLAND • Sigma-Aldrich Sp. z o.o. • 61-663 Poznań PORTUGAL • Sigma-Aldrich Quimica, S.A. • Sintra 2710 RUSSIA • Sigma-Aldrich Russia • Moscow 103062 SINGAPORE • Sigma-Aldrich Pte. Ltd.  
SOUTH AFRICA • Sigma-Aldrich (pty) Ltd. • Jet Park 1459 SPAIN • Sigma-Aldrich Quimica, S.A. • 28100 Alcobendas, Madrid SWEDEN • Sigma-Aldrich Sweden AB • 135 70 Stockholm  
SWITZERLAND • Supelco • CH-9471 Buchs UNITED KINGDOM • Sigma-Aldrich Company Ltd. • Poole, Dorset BH12 4QH  
UNITED STATES • Supelco • Supelco Park • Bellefonte, PA 16823-0048 • Phone 800-247-6628 or 814-359-3441 • Fax 800-447-3044 or 814-359-3044 • email: [supelco@sial.com](mailto:supelco@sial.com)