

# TheReporter

Reprinted from Volume 14, No. 1, 1995

T295021

© 1999 Sigma-Aldrich Co.

For more information, or current prices, contact your nearest Supelco subsidiary listed below. To obtain further contact information, visit our website ([www.sigma-aldrich.com](http://www.sigma-aldrich.com)), see the Supelco catalog, or contact Supelco, Bellefonte, PA 16823-0048 USA.

**ARGENTINA** • Sigma-Aldrich de Argentina, S.A. • Av. Pueyrredon 2446/50 • Piso 5-B • Buenos Aires 1119  
**AUSTRALIA** • Sigma-Aldrich Pty. Ltd. • Unit #2, 14 Anella Avenue • Castle Hill NSW 2154  
**AUSTRIA** • Sigma-Aldrich Handels GmbH • Hebbelplatz 7 • A-1110 Wien  
**BELGIUM** • Sigma-Aldrich N.V./S.A. • K. Cardijnplein 8 • B-2880 Bornem  
**BRAZIL** • Sigma-Aldrich Quimica Brasil Ltda. • Rua Sabara, 566-Conj. 53 • 01239-010 São Paulo, SP  
**CANADA** • Sigma-Aldrich Canada, Ltd. • 2149 Winston Park Dr., Oakville, ON L6H 6J8  
**CZECH REPUBLIC** • Sigma-Aldrich s.r.o. • Pobrezni 46 • 186 21 Praha 8  
**DENMARK** • Sigma-Aldrich Denmark A/S • Vejlegaardsvej 65B • DK-2665 Vallensbaek Strand  
**FINLAND** • Sigma-Aldrich Finland/YA-Kemia Oy • Teerisuonkuja 4 • FIN-00700 Helsinki  
**FRANCE** • Sigma-Aldrich Chimie • Chromatographie Supelco • L'Isle d'Abeau Chesnes - B.P. 701 • 38297 Saint-Quentin Fallavier Cedex  
**GERMANY** • Sigma-Aldrich Chemie GmbH • Geschäftsbereich Supelco • Grünwalder Weg 30 • D-82041 Deisenhofen  
**GREECE** • Sigma-Aldrich (o.m.) Ltd. • 72 Argonafton Str. • 16346 Ilioupoli, Athens  
**HUNGARY** • Sigma-Aldrich Kft. • Nagy Diófa u. 7., IV fl. • H-1067 Budapest  
**INDIA** • Sigma-Aldrich Co. • Survey No. 31/1, Sitharamapalaya • Mahadevapura P.O. • Bangalore 560 048  
**IRELAND** • Sigma-Aldrich Ireland Ltd. • Airton Road • Tallaght • Dublin 24  
**ISRAEL** • Sigma Israel Chemicals Ltd. • Park Rabin • Rohovot 76100  
**ITALY** • Sigma-Aldrich s.r.l. • Via Gallarate, 154 • 20151 Milano  
**JAPAN** • Sigma-Aldrich Japan K.K. • Division Supelco • JL Nihonbashi Building • 1-10-15 Nihonbashi Horidome-cho, Chuo-ku • Tokyo 103  
**KOREA** • Sigma-Aldrich Korea • Samhan Camus Annex, 10<sup>th</sup> Floor • 17-26 Yoido-dong, Yungdeungpo-ku • Seoul  
**MALAYSIA** • Sigma-Aldrich (M) Sdn. Bhd. • 9-2, Jalan 2/128, Taman Gembira • Off Jalan Kuchai Lama • 58200 Kuala Lumpur • Selangor  
**MEXICO** • Sigma-Aldrich Quimica S.A. de C.V. • Calle 6 North No. 107 • Parque Industrial Toluca 2000 • 50200 Toluca  
**NETHERLANDS** • Sigma-Aldrich Chemie BV • Postbus 27 • 3330 AA Zwijndrecht  
**NORWAY** • Sigma-Aldrich Norway • Sandakerveien 102 • N-0483 Oslo  
**POLAND** • Sigma-Aldrich Sp. z o.o. • Szelagowska 30 • 61-626 Poznań  
**PORTUGAL** • Sigma-Aldrich Quimica, S.A. • P.O. Box 131 • Sintra 2710  
**RUSSIA** • Sigma-Aldrich Russia • TOO Techmedbiochem • Makarenko Str. 2/21 • Building 1, Flat 22 • Moscow 103062  
**SINGAPORE** • Sigma-Aldrich Pte. Ltd. • 102E Pasir Panjang Road • #08-01 Citilink Warehouse • Singapore 118529  
**SOUTH AFRICA** • Sigma-Aldrich (pty) Ltd. • CNR Kelly & Ackerman Streets • Southern Life Industrial Park Unit • Unit 16/17 • Jet Park 1459  
**SPAIN** • Sigma-Aldrich Quimica, S.A. • Apt. Correos 161 • 28100 Alcobendas, Madrid  
**SWEDEN** • Sigma-Aldrich Sweden AB • Solkraftsvägen 14C • 135 70 Stockholm  
**SWITZERLAND** • Supelco Switzerland • Industriestrasse 25 • P.O. Box 260 • CH-9471 Buchs  
**UNITED KINGDOM** • Sigma-Aldrich Company Ltd. • Supelco UK • Fancy Road, Poole • Dorset BH12 4QH  
**UNITED STATES** • Supelco • Supelco Park • Bellefonte, PA 16823-0048 • Phone 800-247-6628 or 814-359-3441 • Fax 800-447-3044 or 814-359-3044 • email:supelco@sial.com

H

This article is archived from a past issue of The Supelco Reporter. Information in the article was appropriate at the time of publication, but product specifications, catalog numbers, and availability may have changed over time.

If you have questions about applying methodology described in this article to a current application, please contact our technical service chemists.



Supelco is a member of the Sigma-Aldrich family. Supelco products are sold through Sigma-Aldrich, Inc. Sigma-Aldrich warrants that its products conform to the information contained in this and other Sigma-Aldrich publications. Purchaser must determine the suitability of the product for a particular use. Additional terms and conditions may apply. Please see the reverse side of the invoice or packing slip.

# Important Petroleum Separations Using a New SPB™-Octyl Capillary Column

M.V. Robillard, N.G. Ervin, and L.M. Sidisky

*The newly-developed SPB-Octyl stationary phase, a bonded nonpolar silicone polymer containing 50% methyl and 50% n-octyl substituted groups, displays a polarity lower than the widely used polydimethylsiloxane phases such as SPB-1 and approaches that of squalane. The potential for using the SPB-Octyl phase in important petroleum applications is demonstrated through a number of key separations which differentiate it from other nonpolar phases.*

Squalane is the "zero" polarity reference in the Rohrschneider and McReynolds systems for characterizing stationary phase polarity (Reporter Vol. 13, No. 3, page 10). In the past, petroleum analysts typically used squalane as the standard nonpolar stationary phase for detailed separation of complex hydrocarbon samples such as naphthas, reformates, and gasolines. But the use of squalane had disadvantages. As a nonbonded phase, it had a very low maximum operating temperature. Applying a thick film of the phase on a capillary column resulted in major loss of chromatographic coating efficiency, adversely affecting high resolution detailed hydrocarbon analysis.

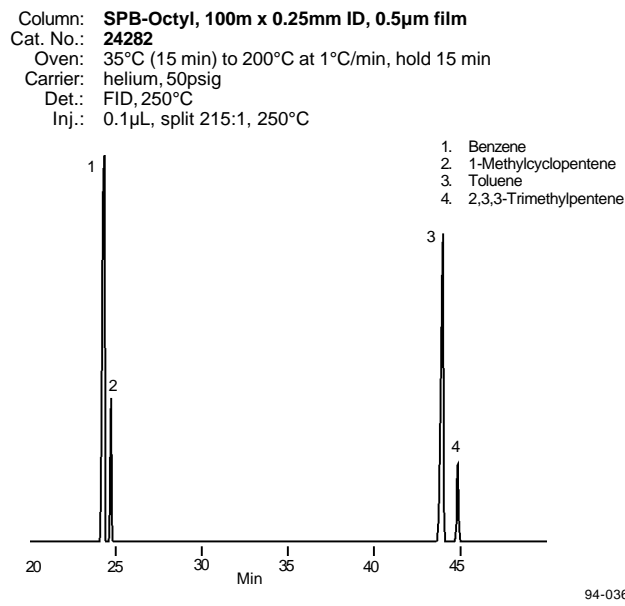
Polydimethylsiloxane (PDMS) replaced squalane as a nonpolar stationary phase. However, PDMS columns such as SPB-1 and SPB-5, while being classified as nonpolar, have a measurably higher polarity than squalane.

Our new SPB-Octyl columns are coated with an extremely nonpolar bonded stationary phase containing 50% octyl/50% methyl polysiloxane. The SPB-Octyl phase displays a polarity lower than PDMS phases and approaches that of squalane. This new phase offers a wide temperature range (-60°C to 280°C) and provides several unique hydrocarbon separations important to petroleum analysts. It is particularly useful for separating aromatics and oxygenates from compounds of other classes with which they coelute or are only partially resolved on other nonpolar columns.

Benzene and 1-methylcyclopentene, and toluene and 2,3,3-trimethylpentane, are two pairs of compounds of different class frequently present at high levels in petroleum streams. Because of their different compound classes, separation is often critical. These two pairs coelute on SPB-1 type phases. As shown in Figure A, they are more than baseline resolved on the SPB-Octyl column.

A method recently developed by the American Society for Testing and Materials (ASTM D5441, *Test Method for Analysis of Methyl tert-Butyl Ether (MTBE) by Gas Chromatography*) specifies the use

**Figure A. Key Hydrocarbon Pairs Completely Resolved on a 100-Meter SPB-Octyl Column**



of a long SPB-1 type column to resolve several key oxygenate/hydrocarbon pairs, specifically tert-butanol and cis/trans-2-pentene (Reporter Vol. 13, No. 2, page 8). Figure B compares a 100m Petrocol™ DH column (coated with an SPB-1 stationary phase) with an SPB-Octyl column in separating part of a calibration standard. On the Petrocol DH column, tert-butanol elutes between cis- and trans-2-pentene. On the SPB-Octyl column, tert-butanol elutes well before both cis- and trans-2-pentene. Other hydrocarbons in this calibration standard maintain the same relative elution order on these two columns.

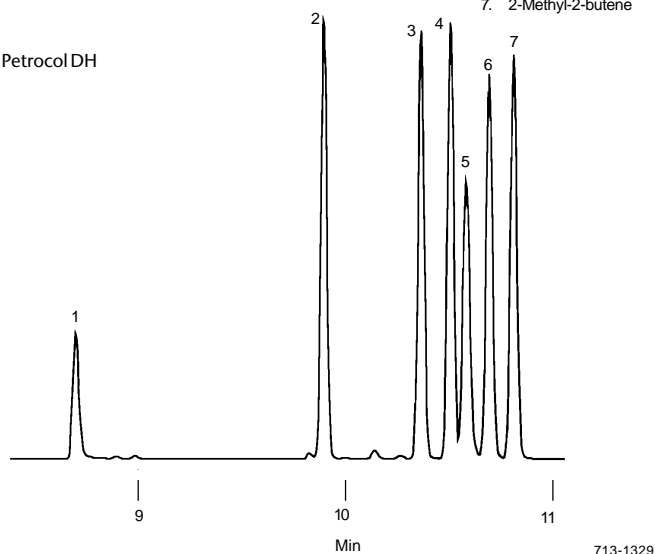
**Figure B. MTBE Contaminants**

Column: **Petrocol DH, 100m x 0.25mm ID, 0.5µm film**  
 Cat. No.: **24160-U**  
 Oven: 50°C (13 min) to 180°C at 10°C/min  
 Carrier: helium, 20cm/sec; vent flow 140mL/min  
 Det.: FID, 310°C  
 Inj.: 1µL MTBE containing 1% each analyte (MTBE Contaminants Mix A, Cat. No. 47942), split 200:1, 250°C

Column: **SPB-Octyl, 100m x 0.25mm ID, 0.5µm film**  
 Cat. No.: **24282**  
 Oven: 35°C (15 min) to 200°C at 1°C/min, hold 15 min  
 Carrier: helium, 50psig  
 Det.: FID, 250°C  
 Inj.: 0.1µL, split 215:1, 250°C

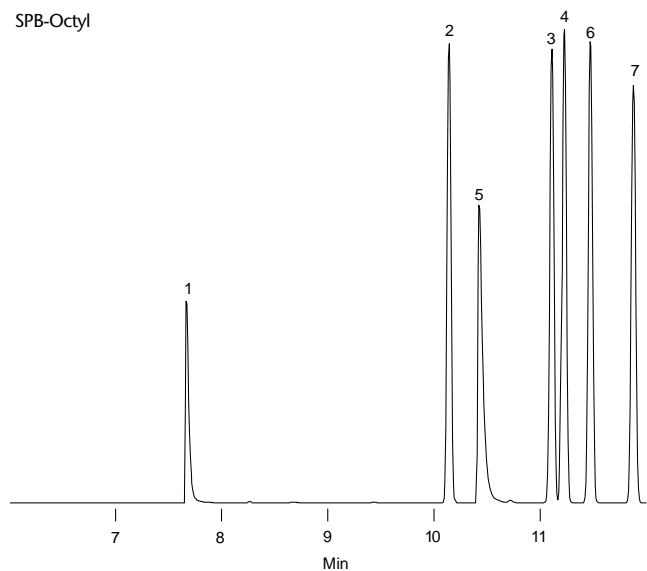
1. Methanol
2. Isopentane
3. n-Pentane
4. trans-2-Pentene
5. tert-Butanol
6. cis-2-Pentene
7. 2-Methyl-2-butene

Petrocol DH



713-1329

SPB-Octyl

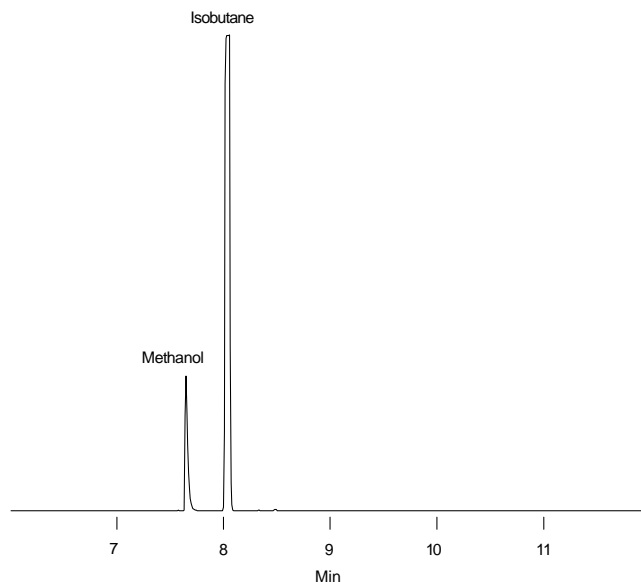


94-0374

Methanol and isobutane can be separated easily on the SPB-Octyl column through shifting of oxygenates earlier in relative retention time (Figure C). This separation is important for purity analysis of methyl tert-butyl ether (MTBE) as well as several other important applications. To achieve the methanol/isobutane separation on a 100-meter SPB-1 column, a subambient initial temperature must be used, especially if disproportionate concentrations are encountered.

**Figure C. Methanol and Isobutane Separated at 35°C on a 100-Meter SPB-Octyl Column**

Column: **SPB-Octyl, 100m x 0.25mm ID, 0.5µm film**  
 Cat. No.: **24282**  
 Oven: 35°C (15 min) to 200°C at 1°C/min, hold 15 min  
 Carrier: helium, 50psig  
 Det.: FID, 250°C  
 Inj.: 0.1µL, split 215:1, 250°C



94-0367

Figure D1 shows the first 25 minutes of an analysis of a pyrolysis gasoline (py gas) sample containing very high concentrations of olefinic, aromatic and styrenic compounds. The SPB-Octyl column baseline resolves disproportionate concentrations of benzene (>30%) and 1-methyl-cyclopentene. The 50-75 minute region of the chromatogram in Figure D2 shows that the xylene isomers, in addition to styrene, all are resolved.

**Figure D. Pyrolysis Gasoline on a 100-Meter SPB-Octyl Column**

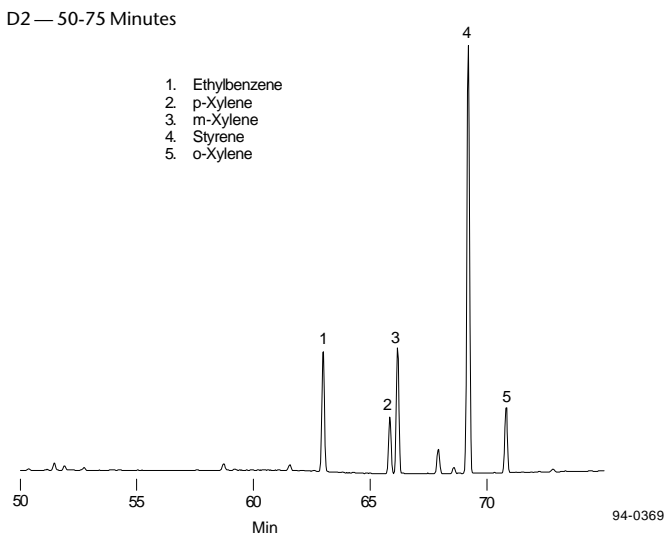
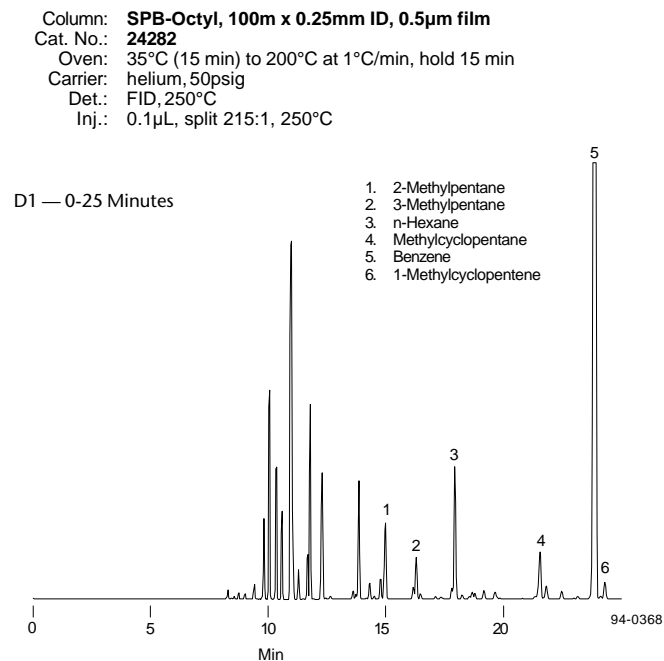
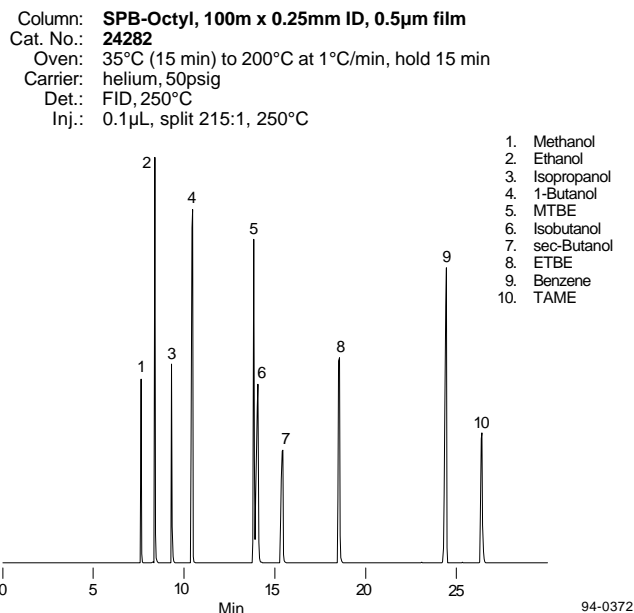


Figure E shows some common oxygenates analyzed on a 100-meter SPB-Octyl column. Elution order is the same as on an SPB-1 column. However, there are significant differences in retention indices of these compounds with respect to hydrocarbons.

The SPB-Octyl column provides excellent resolution and efficiency for separating petroleum mixtures. The unique nonpolar functionality of this bonded phase also is useful for a wide range of food, fragrance, pharmaceutical, and environmental applications.

**Figure E. Oxygenates Mix on a 100-Meter SPB-Octyl Column**



**Ordering Information:**

**Fused Silica Capillary Columns**

SPB-Octyl	
100m x 0.25mm, 0.5µm film	<b>24282</b>
Petrocol DH	
100m x 0.25mm, 0.5µm film	<b>24160-U</b>
SPB-1	
100m x 0.25mm, 0.25µm film	<b>24198</b>
100m x 0.25mm, 1.0µm film	<b>24220-U</b>
100m x 0.32mm, 0.25µm film	<b>24228-U</b>
100m x 0.32mm, 1.0µm film	<b>24213-U</b>

**Highly Characterized Reference Materials**

Petroleum Refinery Reformate	
1 mL	<b>47489</b>
Petroleum Refinery Pyrolysis Gasoline (Py Gas)	
1 mL	<b>47490-U</b>
Petroleum Refinery Heavy Straight Run Naphtha	
1 mL	<b>47488</b>
P-I-A-N-O Mix	
Quantitative mix of 140 n-paraffins, isoparaffins, aromatics, naphthenes, and olefins.	
0.1mL	<b>44593-U</b>
P-I-A-N-O Kit	
0.1mL of each of the following mixes: P-I-A-N-O, n-paraffins, isoparaffins, aromatics, naphthenes, and olefins.	
	<b>44594-U</b>

MTBE Contaminants Mix A	
12 components at 1% w/w in MTBE.	
1 mL	<b>47942</b>

Petrocol and SPE are trademarks of Sigma-Aldrich Co.  
 Fused silica columns manufactured under HP US patent no. 4,293,415.