

TheReporter

Reprinted from Volume 17, No. 3, 1998

T298043

© 1999 Sigma-Aldrich Co.

For more information, or current prices, contact your nearest Supelco subsidiary listed below. To obtain further contact information, visit our website (www.sigma-aldrich.com), see the Supelco catalog, or contact Supelco, Bellefonte, PA 16823-0048 USA.

ARGENTINA • Sigma-Aldrich de Argentina, S.A. • Av. Pueyrredon 2446/50 • Piso 5-B • Buenos Aires 1119
AUSTRALIA • Sigma-Aldrich Pty. Ltd. • Unit #2, 14 Anella Avenue • Castle Hill NSW 2154
AUSTRIA • Sigma-Aldrich Handels GmbH • Hebbelplatz 7 • A-1110 Wien
BELGIUM • Sigma-Aldrich N.V./S.A. • K. Cardijnplein 8 • B-2880 Bornem
BRAZIL • Sigma-Aldrich Quimica Brasil Ltda. • Rua Sabara, 566-Conj. 53 • 01239-010 São Paulo, SP
CANADA • Sigma-Aldrich Canada, Ltd. • 2149 Winston Park Dr., Oakville, ON L6H 6J8
CZECH REPUBLIC • Sigma-Aldrich s.r.o. • Pobrezni 46 • 186 21 Praha 8
DENMARK • Sigma-Aldrich Denmark A/S • Vejlegaardsvej 65B • DK-2665 Vallensbaek Strand
FINLAND • Sigma-Aldrich Finland/YA-Kemia Oy • Teerisuonkuja 4 • FIN-00700 Helsinki
FRANCE • Sigma-Aldrich Chimie • Chromatographie Supelco • L'Isle d'Abeau Chesnes - B.P. 701 • 38297 Saint-Quentin Fallavier Cedex
GERMANY • Sigma-Aldrich Chemie GmbH • Geschäftsbereich Supelco • Grünwalder Weg 30 • D-82041 Deisenhofen
GREECE • Sigma-Aldrich (o.m.) Ltd. • 72 Argonafton Str. • 16346 Ilioupoli, Athens
HUNGARY • Sigma-Aldrich Kft. • Nagy Diófa u. 7., IV fl. • H-1067 Budapest
INDIA • Sigma-Aldrich Co. • Survey No. 31/1, Sitharamapalaya • Mahadevapura P.O. • Bangalore 560 048
IRELAND • Sigma-Aldrich Ireland Ltd. • Airton Road • Tallaght • Dublin 24
ISRAEL • Sigma Israel Chemicals Ltd. • Park Rabin • Rohovot 76100
ITALY • Sigma-Aldrich s.r.l. • Via Gallarate, 154 • 20151 Milano
JAPAN • Sigma-Aldrich Japan K.K. • Division Supelco • JL Nihonbashi Building • 1-10-15 Nihonbashi Horidome-cho, Chuo-ku • Tokyo 103
KOREA • Sigma-Aldrich Korea • Samhan Camus Annex, 10th Floor • 17-26 Yoido-dong, Yungdeungpo-ku • Seoul
MALAYSIA • Sigma-Aldrich (M) Sdn. Bhd. • 9-2, Jalan 2/128, Taman Gembira • Off Jalan Kuchai Lama • 58200 Kuala Lumpur • Selangor
MEXICO • Sigma-Aldrich Quimica S.A. de C.V. • Calle 6 North No. 107 • Parque Industrial Toluca 2000 • 50200 Toluca
NETHERLANDS • Sigma-Aldrich Chemie BV • Postbus 27 • 3330 AA Zwijndrecht
NORWAY • Sigma-Aldrich Norway • Sandakerveien 102 • N-0483 Oslo
POLAND • Sigma-Aldrich Sp. z o.o. • Szelagowska 30 • 61-626 Poznań
PORTUGAL • Sigma-Aldrich Quimica, S.A. • P.O. Box 131 • Sintra 2710
RUSSIA • Sigma-Aldrich Russia • TOO Techmedbiochem • Makarenko Str. 2/21 • Building 1, Flat 22 • Moscow 103062
SINGAPORE • Sigma-Aldrich Pte. Ltd. • 102E Pasir Panjang Road • #08-01 Citilink Warehouse • Singapore 118529
SOUTH AFRICA • Sigma-Aldrich (pty) Ltd. • CNR Kelly & Ackerman Streets • Southern Life Industrial Park Unit • Unit 16/17 • Jet Park 1459
SPAIN • Sigma-Aldrich Quimica, S.A. • Apt. Correos 161 • 28100 Alcobendas, Madrid
SWEDEN • Sigma-Aldrich Sweden AB • Solkraftsvägen 14C • 135 70 Stockholm
SWITZERLAND • Supelco Switzerland • Industriestrasse 25 • P.O. Box 260 • CH-9471 Buchs
UNITED KINGDOM • Sigma-Aldrich Company Ltd. • Supelco UK • Fancy Road, Poole • Dorset BH12 4QH
UNITED STATES • Supelco • Supelco Park • Bellefonte, PA 16823-0048 • Phone 800-247-6628 or 814-359-3441 • Fax 800-447-3044 or 814-359-3044 • email:supelco@sial.com

H

This article is archived from a past issue of The Supelco Reporter. Information in the article was appropriate at the time of publication, but product specifications, catalog numbers, and availability may have changed over time.

If you have questions about applying methodology described in this article to a current application, please contact our technical service chemists.

 **SUPELCO**

ISO 9001
REGISTERED

Supelco is a member of the Sigma-Aldrich family. Supelco products are sold through Sigma-Aldrich, Inc. Sigma-Aldrich warrants that its products conform to the information contained in this and other Sigma-Aldrich publications. Purchaser must determine the suitability of the product for a particular use. Additional terms and conditions may apply. Please see the reverse side of the invoice or packing slip.

Versatile Amberlite XAD-2 Resin Available Worldwide

K. Pardue, Liquid Separations, Supelco, Bellefonte, PA, USA

When the original manufacturer decided to stop making Amberlite® XAD®-2 resin, Supelco obtained permission to continue manufacturing this popular hydrophobic adsorbent material. Widespread concern about the availability of this resin has compelled us to issue a series of announcements to assure analysts worldwide that the material is currently in production, will continue to be in production, and is available in a plentiful supply.

Amberlite XAD-2 resin is a macroreticular, styrene-divinylbenzene copolymer, nonionic bead, composed of an agglomeration of microspheres (Figure A). This structure offers excellent physical and chemical stability, and rapid mass transfer of analytes. The large bead size ensures backpressure is minimal or absent during use. The hydrophobic nature of the resin leads to reversed phase analyses. Characteristics of Amberlite XAD-2 resin are summarized in Figure A.

Amberlite XAD-2 resin has been used in a wide variety of applications, including:

- Sampling airborne semivolatile compounds
- Removing phenol, chlorinated organics, pesticides
- Removing surfactants
- Analyzing aroma compounds
- Recovering antibiotics
- Analyzing wastewater treatment
- Sample preparation

In these applications, the resin offers high capacity, can be used with aqueous or organic solvent-based solutions, and is relatively inexpensive.

A popular application for Amberlite XAD-2 resin, stack gas sampling, requires extensively cleaned resin. Because this procedure is tedious and time-consuming, we offer a dry, high-purity version of Amberlite XAD-2: Supelpak™-2 adsorbent (Figure B). This clean material is widely used for analyses of airborne semivolatile organics, particularly polynuclear aromatic hydrocarbons (PAHs) and dioxins. Supelpak-2 material can be used for source testing, as well as for monitoring ambient and indoor air.

Figure A. Structure of Hydrophobic Macroreticular Resin Bead

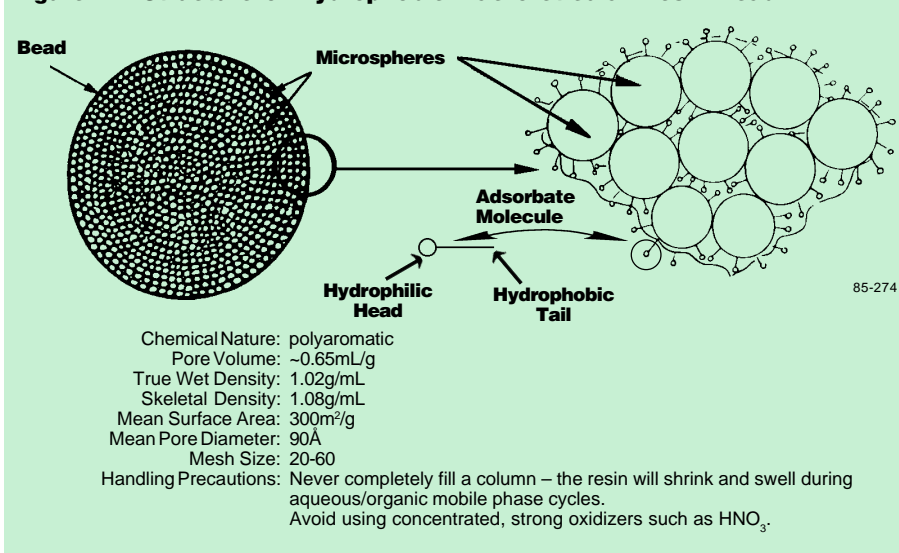
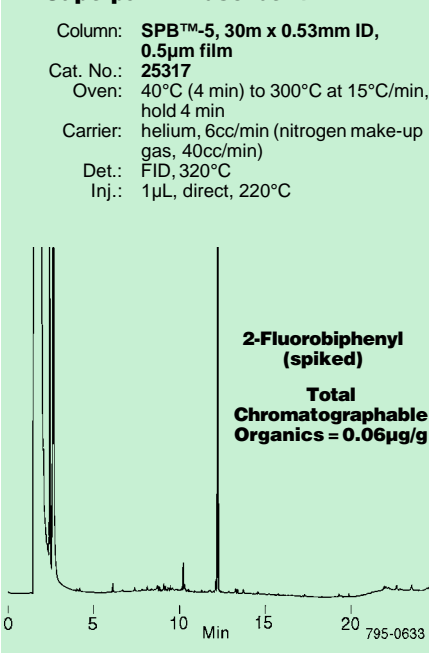


Figure B. Negligible Background in Supelpak-2 Adsorbent



A wet, specially cleaned version of Amberlite XAD-2 resin, Supelpak-2B, is used for determining polychlorinated biphenyls (PCBs) in water according to the Great Lakes National Program Office.

If you have been using Amberlite XAD-2 resin, or are planning work that could involve this material, be assured that it is still in production and is in plentiful supply. More than 80 suppliers around the world are ready to meet your needs.

Ordering Information:

Description	Cat. No.
Amberlite XAD-2 Resin	
100g	20275
500g	10357
Supelpak-2 Resin	
100g	20279
Supelpak-2B Resin	
100g	13670

These products contain media manufactured by Supelco, under license from the trademark owner.

Custom orders for larger quantities, different mesh sizes, and/or cleaning procedures can be accommodated.

Trademarks

Amberlite, XAD — Rohm and Haas Co.
 SPB, Supelpak — Sigma-Aldrich Co.



Reprinted from Volume 17, No. 3, 1998