

3050 Spruce Street, Saint Louis, MO 63103, USA

Website: www.sigmaaldrich.com

Email USA: techserv@sial.com

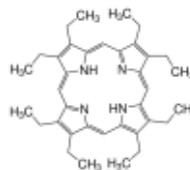
Outside USA: eurtechserv@sial.com

## Certificate of Analysis

Product Name:

2,3,7,8,12,13,17,18-Octaethyl-21H,23H-porphine - 97%

**Product Number:** 252409  
**Batch Number:** MKCF5314  
**Brand:** ALDRICH  
**CAS Number:** 2683-82-1  
**MDL Number:** MFCD00009627  
**Formula:** C<sub>36</sub>H<sub>46</sub>N<sub>4</sub>  
**Formula Weight:** 534.78 g/mol  
**Quality Release Date:** 26 DEC 2017



Test	Specification	Result
Appearance (Color)	Purple to Very Dark Purple	Very Dark Purple
Appearance (Form)	Powder	Powder
Infrared Spectrum	Conforms to Structure	Conforms
Carbon	78.0 - 83.7 %	79.9 %
Nitrogen	10.1 - 10.8 %	10.1 %
Purity (HPLC)	≥ 96.5 %	96.9 %
Solubility (Turbidity) c = 0.1 mg/ml; Chloroform	Clear	Clear
Solubility (Color)	Dark Red to Very Dark Red	Dark Red
Wavelength C= 0.004 G/L TOLUENE	398 - 404 nm	401 nm
Extinction Coefficient	≥ 155000	167308
Wavelength	496 - 502 nm	498 nm
Extinction Coefficient	≥ 12000	16410
Wavelength	528 - 534 nm	531 nm
Extinction Coefficient	≥ 9000	12877
Wavelength	566 - 572 nm	569 nm
Extinction Coefficient	≥ 6000	8909
Wavelength	620 - 626 nm	623 nm
Extinction Coefficient	≥ 6000	8700

Michael Grady, Manager

Sigma-Aldrich warrants, that at the time of the quality release or subsequent retest date this product conformed to the information contained in this publication. The current Specification sheet may be available at Sigma-Aldrich.com. For further inquiries, please contact Technical Service. Purchaser must determine the suitability of the product for its particular use. See reverse side of invoice or packing slip for additional terms and conditions of sale.

3050 Spruce Street, Saint Louis, MO 63103, USA

Website: [www.sigmaldrich.com](http://www.sigmaldrich.com)Email USA: [techserv@sial.com](mailto:techserv@sial.com)Outside USA: [eurtechserv@sial.com](mailto:eurtechserv@sial.com)

## Certificate of Analysis

**Product Number:** 252409  
**Batch Number:** MKCF5314

---

Quality Control  
Milwaukee, WI US

Sigma-Aldrich warrants, that at the time of the quality release or subsequent retest date this product conformed to the information contained in this publication. The current Specification sheet may be available at [Sigma-Aldrich.com](http://Sigma-Aldrich.com). For further inquiries, please contact Technical Service. Purchaser must determine the suitability of the product for its particular use. See reverse side of invoice or packing slip for additional terms and conditions of sale.