

3050 Spruce Street, Saint Louis, MO 63103, USA

Website: www.sigmaaldrich.com

Email USA: techserv@sial.com

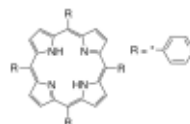
Outside USA: eurtechserv@sial.com

Certificate of Analysis

Product Name:

5,10,15,20-Tetra(4-pyridyl)-21H,23H-porphine - 97%

Product Number: 257613
Batch Number: MKCC0542
Brand: ALDRICH
CAS Number: 16834-13-2
MDL Number: MFCD00009626
Formula: C₄₀H₂₆N₈
Formula Weight: 618.69 g/mol
Quality Release Date: 07 DEC 2016



Test	Specification	Result
Appearance (Color)	Purple to Very Dark Purple	Very Dark Purple
Appearance (Form)	Powder or Solid or Crystals or Crystalline Chunk(s) or Chunk(s)	Powder
Infrared Spectrum	Conforms to Structure	Conforms
Wavelength	412 - 422 nm	418 nm
C= 0.002 G/L TOLUENE OR ACIDIFIED CHCL ₃		
Extinction Coefficient	≥ 200000	229300
In Toluene or Acidified CHCl ₃		
Carbon	74.9 - 80.4 %	77.8 %
Nitrogen	17.4 - 18.7 %	18.1 %
Purity (HPLC)	≥ 96.5 %	98.7 %

Michael Grady, Manager
 Quality Control
 Milwaukee, WI US

Sigma-Aldrich warrants, that at the time of the quality release or subsequent retest date this product conformed to the information contained in this publication. The current Specification sheet may be available at Sigma-Aldrich.com. For further inquiries, please contact Technical Service. Purchaser must determine the suitability of the product for its particular use. See reverse side of invoice or packing slip for additional terms and conditions of sale.