

3050 Spruce Street, Saint Louis, MO 63103, USA

Website: www.sigmaaldrich.com

Email USA: techserv@sial.com

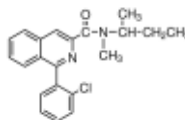
Outside USA: eurtechserv@sial.com

Certificate of Analysis

Product Name:

PK 11195

Product Number: C0424
Batch Number: 079M4143V
Brand: SIGMA
CAS Number: 85532-75-8
Formula: C₂₁H₂₁ClN₂O
Formula Weight: 352,86 g/mol
Quality Release Date: 30 JAN 2017
Recommended Retest Date: JAN 2020



Test	Specification	Result
Appearance (Form)	Powder	Powder
Appearance (Colour)	White to White w/ Yellow Cast	White
Solubility (Solvent)	Chloroform	Chloroform
Solubility (Conc)	9,8 - 10,2 mg/ml	10,0 mg/ml
Solubility (Turbidity)	Clear	Clear
Solubility (Color)	Colorless to Faint Yellow	Colorless
Water (by Karl Fischer)	≥ 0,00 %	0,15 %
Elemental Anal. (%C anhydrous)	71,00 - 71,80 %	71,31 %
Elemental Anal. (%N anhydrous)	7,63 - 8,23 %	7,86 %
Purity (TLC)	≥ 98,00 %	100,00 %
NMR (Solvent)	CDCl ₃	CDCl ₃
Identity by NMR	Consistent	Consistent with Structure
NMR (Residual Solvent 1)	Ethylacetate	Ethylacetate
NMR (% Solvent 1)	≤ 1,00 %	0,00 %
NMR (Residual Solvent 2)	Isopropyl Ether	Isopropyl Ether
NMR (% Solvent 2)	≤ 1,00 %	0,40 %
NMR (Total % Resid.Solvents)	≤ 1,00 %	0,40 %

Theo Ackermann PhD MScEng CQM
 Manager, Quality and Regulatory Affairs
 Jerusalem, Israel IL

Sigma-Aldrich warrants, that at the time of the quality release or subsequent retest date this product conformed to the information contained in this publication. The current Specification sheet may be available at Sigma-Aldrich.com. For further inquiries, please contact Technical Service. Purchaser must determine the suitability of the product for its particular use. See reverse side of invoice or packing slip for additional terms and conditions of sale.