

3050 Spruce Street, Saint Louis, MO 63103, USA

Website: www.sigmaaldrich.com

Email USA: techserv@sial.com

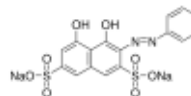
Outside USA: eurtechserv@sial.com

Certificate of Analysis

Product Name:

Chromotrope 2R – suitable for modified Gomori Trichrome stain

Product Number: C3143
Batch Number: SLBR2881V
Brand: SIGMA
CAS Number: 4197-07-3
MDL Number: MFCD00003955
Formula: C₁₆H₁₀N₂Na₂O₈S₂
Formula Weight: 468.37 g/mol
Quality Release Date: 13 JUN 2016



Test	Specification	Result
Appearance (Color)	Red to Brown	Very Dark Red
Appearance (Form)	Powder	Powder
Solubility (Color)	Dark Red	Dark Red
1 mg/ml, H ₂ O		
Nitrogen	4.3 - 7.6 %	4.6 %
Sodium (Na)	≥ 9 %	12 %
By ICP		
Suitability	Suitable	Suitable
Suitable for use in modified Gomori Trichrome Stain		
E1%	≥ 450	498
in MeOH		
Wavelength	510 - 513 nm	511 nm
Dye Content	≥ 70 %	77 %

Rodney Burbach, Manager
 Analytical Services
 St. Louis, Missouri US

Sigma-Aldrich warrants, that at the time of the quality release or subsequent retest date this product conformed to the information contained in this publication. The current Specification sheet may be available at Sigma-Aldrich.com. For further inquiries, please contact Technical Service. Purchaser must determine the suitability of the product for its particular use. See reverse side of invoice or packing slip for additional terms and conditions of sale.