

3050 Spruce Street, Saint Louis, MO 63103, USA

Website: www.sigmaaldrich.com

Email USA: techserv@sial.com

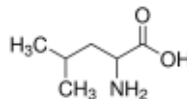
Outside USA: eurtechserv@sial.com

Certificate of Analysis

Product Name:

DL-Leucine - ≥99% (HPLC)

Product Number: L7875
Batch Number: SLCB2032
Brand: SIGMA
CAS Number: 328-39-2
MDL Number: MFCD00063087
Formula: C₆H₁₃NO₂
Formula Weight: 131,17 g/mol
Quality Release Date: 14 DEC 2018
Recommended Retest Date: DEC 2022



Test	Specification	Result
Appearance (Color)	White	White
Appearance (Form)	Powder	Powder
Solubility (Color)	Colorless to Faint Yellow	Colorless
Solubility (Turbidity)	Clear	Clear
50 mg/mL, 1 M HCl		
Carbon	54.4 - 55.4 %	54.9 %
Nitrogen	10.4 - 11.0 %	10.4 %
Infrared Spectrum	Conforms to Structure	Conforms
Purity (HPLC)	≥ 99 %	100 %



Rodney Burbach, Manager
Analytical Services
St. Louis, Missouri US

Sigma-Aldrich warrants, that at the time of the quality release or subsequent retest date this product conformed to the information contained in this publication. The current Specification sheet may be available at Sigma-Aldrich.com. For further inquiries, please contact Technical Service. Purchaser must determine the suitability of the product for its particular use. See reverse side of invoice or packing slip for additional terms and conditions of sale.