

3050 Spruce Street, Saint Louis, MO 63103, USA

Website: www.sigmaaldrich.com

Email USA: techserv@sial.com

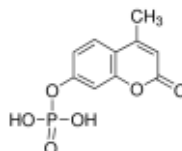
Outside USA: eurtechserv@sial.com

Certificate of Analysis

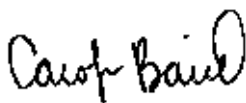
Product Name:

4-Methylumbelliferyl phosphate - phosphatase substrate

Product Number: M8883
Batch Number: SLBW1045
Brand: SIGMA
CAS Number: 3368-04-5
MDL Number: MFCD00016969
Formula: C₁₀H₉O₆P
Formula Weight: 256.15 g/mol
Storage Temperature: Store at -20 °C
Quality Release Date: 20 OCT 2017
Date Retested: 03 OCT 2019
Recommended Retest Date: OCT 2021



Test	Specification	Result
Appearance (Color)	White to Off White	White
Appearance (Form)	Powder	Powder
Solubility (Color)	Colorless	Colorless
Solubility (Turbidity) 25 mg/ml, H ₂ O	Clear to Very Slightly Hazy	Clear
Proton NMR Spectrum	Conforms to Structure	Conforms
Titration with NaOH	≥ 98 %	99 %
Purity (HPLC)	≥ 98 %	100 %



Carolyn Baird, Supervisor
Quality Assurance
St. Louis, Missouri US

Sigma-Aldrich warrants, that at the time of the quality release or subsequent retest date this product conformed to the information contained in this publication. The current Specification sheet may be available at Sigma-Aldrich.com. For further inquiries, please contact Technical Service. Purchaser must determine the suitability of the product for its particular use. See reverse side of invoice or packing slip for additional terms and conditions of sale.