

3050 Spruce Street, Saint Louis, MO 63103, USA

Website: www.sigmaaldrich.com

Email USA: techserv@sial.com

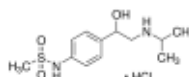
Outside USA: eurtechserv@sial.com

Certificate of Analysis

Product Name:

(±)-Sotalol hydrochloride - ≥98% (TLC), powder

Product Number: S0278
Batch Number: 047M4111V
Brand: SIGMA
CAS Number: 959-24-0
Formula: C₁₂H₂₀N₂O₃S·HCl
Formula Weight: 308.8 AMU
Quality Release Date: 27 APR 2017
Recommended Retest Date: APR 2020



Test	Specification	Result
Appearance (Form)	Powder	Powder
Appearance (Colour)	White to White w/ Yellow Cast	White
Solubility (Solvent)	Water	Water
Solubility (Conc)	19.60 - 20.40 mg/ml	20.00 mg/ml
Solubility (Turbidity)	Clear	Clear
Solubility (Color)	Colorless	Colorless
Water (by Karl Fischer)	≥ 0.00 %	0.18 %
Elemental Anal. (%C anhydrous)	46.17 - 47.17 %	46.65 %
Elemental Anal. (%N anhydrous)	8.67 - 9.47 %	9.12 %
Purity (TLC)	≥ 98.00 %	99.50 %
NMR (Solvent)	DMSO-d6	DMSO-d6
Identity by NMR	Consistent	Consistent with Structure
NMR (Residual Solvent 1)	Ethanol	Ethanol
NMR (% Solvent 1)	≤ 1.00 %	0.15 %

Theo Ackermann PhD MScEng CQM
Manager, Quality and Regulatory Affairs
Jerusalem, Israel IL

Sigma-Aldrich warrants, that at the time of the quality release or subsequent retest date this product conformed to the information contained in this publication. The current Specification sheet may be available at Sigma-Aldrich.com. For further inquiries, please contact Technical Service. Purchaser must determine the suitability of the product for its particular use. See reverse side of invoice or packing slip for additional terms and conditions of sale.