

3050 Spruce Street, Saint Louis, MO 63103, USA

Website: www.sigmaaldrich.com

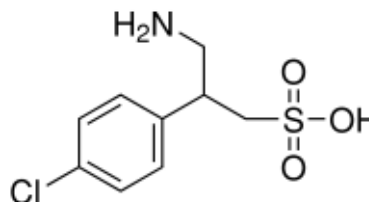
Email USA: techserv@sial.com

Outside USA: eurtechserv@sial.com

Certificate of Analysis

Product Name:
Saclofen - solid

Product Number: S166
Batch Number: SLBF4602V
Brand: SIGMA
CAS Number: 125464-42-8
MDL Number: MFCD00216817
Formula: C₉H₁₂ClNO₃S
Formula Weight: 249.71 g/mol
Quality Release Date: 28 NOV 2012



Test	Specification	Result
Appearance (Color)	White to Off-White	White
Appearance (Form)	Powder	Powder
Solubility	Conforms	Conforms
Soluble in 0.1M NaOH at 20 mg/ml		
Proton NMR Spectrum	Conforms to Structure	Conforms
Carbon	42.2 - 44.4 %	43.7 %
Nitrogen	5.3 - 5.8 %	5.5 %
Purity (HPLC)	≥ 98 %	> 99 %

Rodney Burbach, Manager
Analytical Services
St. Louis, Missouri US

Sigma-Aldrich warrants, that at the time of the quality release or subsequent retest date this product conformed to the information contained in this publication. The current Specification sheet may be available at Sigma-Aldrich.com. For further inquiries, please contact Technical Service. Purchaser must determine the suitability of the product for its particular use. See reverse side of invoice or packing slip for additional terms and conditions of sale.