

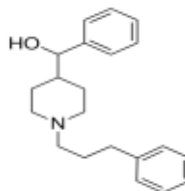
3050 Spruce Street, Saint Louis, MO 63103, USA

Website: www.sigmaaldrich.comEmail USA: techserv@sial.comOutside USA: eurtechserv@sial.com

Certificate of Analysis

Product Name:
MDL 11939 - ≥98% (HPLC)

Product Number: SML0115
Batch Number: 081M4606V
Brand: SIGMA
CAS Number: 107703-78-6
Formula: C₂₀H₂₅NO
Formula Weight: 295.42 g/mol
Storage Temperature: Store at 2 - 8 °C
Quality Release Date: 15 OCT 2011
Date Retested: 30 SEP 2016



Test	Specification	Result
Appearance (Color)	White to Tan	White
Appearance (Form)	Powder	Powder
Elemental Composition C ₂₀ H ₂₅ NO	Pass	Pass
Purity (HPLC)	≥ 98.0 %	99.2 %
Identity	Confirmed	Confirmed

Brendan Nye, QC Supervisor
Quality Control
Natick, Massachusetts US

Sigma-Aldrich warrants, that at the time of the quality release or subsequent retest date this product conformed to the information contained in this publication. The current Specification sheet may be available at Sigma-Aldrich.com. For further inquiries, please contact Technical Service. Purchaser must determine the suitability of the product for its particular use. See reverse side of invoice or packing slip for additional terms and conditions of sale.