

3050 Spruce Street, Saint Louis, MO 63103, USA

Website: www.sigmaaldrich.com

Email USA: techserv@sial.com

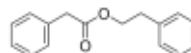
Outside USA: eurtechserv@sial.com

## Certificate of Analysis

Product Name:

Phenethyl phenylacetate - ≥98%, FCC, FG

**Product Number:** W286605  
**Batch Number:** MKBZ2889V  
**Brand:** ALDRICH  
**CAS Number:** 102-20-5  
**MDL Number:** MFCD00022049  
**Formula:** C16H16O2  
**Formula Weight:** 240.30 g/mol  
**Quality Release Date:** 04 MAY 2016  
**Expiration Date:** NOV 2018



Test	Specification	Result
Appearance (Color)	Colorless to Faint Yellow	Very Faint Yellow
Appearance (Form)	Solid or Liquid	Liquid
Refractive index at 20 °C	1.548 - 1.552	1.550
Infrared Spectrum	Conforms to Structure	Conforms
Purity (GC)	≥ 98.0 %	99.5 %
Color Test (APHA)	Results	Pass
APHA 10-150		
Specific Gravity	1.079 - 1.082	1.081
Solidification Point	≥ 26.0 °C	26.9 °C
Solubility (Turbidity)	Clear	Clear
Solubility (Color)	Colorless	Colorless
Acid Value	≤ 1.0 ml	0.2 ml
Arsenic (As)	≤ 3.0 ppm	< 1.0 ppm
Cadmium (Cd)	≤ 1.0 ppm	< 1.0 ppm
Mercury (Hg)	≤ 1.0 ppm	< 1.0 ppm
Lead (Pb)	≤ 10.0 ppm	< 1.0 ppm
Expiration Date Period	-----	-----
5 Years		

Michael Grady, Manager  
Quality Control

Sigma-Aldrich warrants, that at the time of the quality release or subsequent retest date this product conformed to the information contained in this publication. The current Specification sheet may be available at Sigma-Aldrich.com. For further inquiries, please contact Technical Service. Purchaser must determine the suitability of the product for its particular use. See reverse side of invoice or packing slip for additional terms and conditions of sale.

3050 Spruce Street, Saint Louis, MO 63103, USA

Website: [www.sigmaaldrich.com](http://www.sigmaaldrich.com)Email USA: [techserv@sial.com](mailto:techserv@sial.com)Outside USA: [eurtechserv@sial.com](mailto:eurtechserv@sial.com)

## Certificate of Analysis

**Product Number:** W286605  
**Batch Number:** MKBZ2889V

---

Milwaukee, WI US

Sigma-Aldrich warrants, that at the time of the quality release or subsequent retest date this product conformed to the information contained in this publication. The current Specification sheet may be available at [Sigma-Aldrich.com](http://Sigma-Aldrich.com). For further inquiries, please contact Technical Service. Purchaser must determine the suitability of the product for its particular use. See reverse side of invoice or packing slip for additional terms and conditions of sale.