

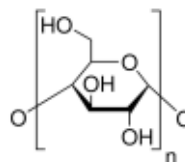
3050 Spruce Street, Saint Louis, MO 63103, USA

Website: www.sigmaldrich.comEmail USA: techserv@sial.comOutside USA: eurtechserv@sial.com

Product Specification

Product Name:
Amylose from potato - used as amylase substrate

Product Number: **A0512**
CAS Number: 9005-82-7
MDL: MFCD00134652
Formula: $(C_6H_{10}O_5)_n$



TEST	Specification
Appearance (Color)	White to Off White
Appearance (Form)	Powder
Solubility (Color)	Colorless
Solubility (Turbidity)	Clear to Slightly Hazy
1 mg/mL, 0.05 M NaOH	
Solvent Content (by GC)	≤ 10 %
as Ethanol	
Solvent Content (by GC)	≤ 2 %
as Butanol	
Blue Value	≥ 0.5
Recommended Retest Period	-----
6 years	

Specification: PRD.1.ZQ5.10000026363

Sigma-Aldrich warrants, that at the time of the quality release or subsequent retest date this product conformed to the information contained in this publication. The current Specification sheet may be available at Sigma-Aldrich.com. For further inquiries, please contact Technical Service. Purchaser must determine the suitability of the product for its particular use. See reverse side of invoice or packing slip for additional terms and conditions of sale.