

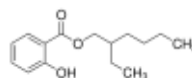
3050 Spruce Street, Saint Louis, MO 63103, USA

Website: www.sigmaaldrich.comEmail USA: techserv@sial.comOutside USA: eurtechserv@sial.com

Product Specification

Product Name:
2-Ethylhexyl salicylate - ≥99%

Product Number: W514500
CAS Number: 118-60-5
MDL: MFCD00053300
Formula: C₁₅H₂₂O₃
Formula Weight: 250.33 g/mol



TEST	Specification
Appearance (Color)	Colorless
Appearance (Form)	Liquid
Refractive index at 20 ° C	1.500 - 1.504
Infrared spectrum	Conforms to Structure
Purity (GC)	≥ 99.0 %
Arsenic (As)	≤ 3.0 ppm
Cadmium (Cd)	≤ 1.0 ppm
Mercury (Hg)	≤ 1.0 ppm
Lead (Pb)	≤ 10.0 ppm

Specification: PRD.1.ZQ5.1000007905

Sigma-Aldrich warrants, that at the time of the quality release or subsequent retest date this product conformed to the information contained in this publication. The current Specification sheet may be available at Sigma-Aldrich.com. For further inquiries, please contact Technical Service. Purchaser must determine the suitability of the product for its particular use. See reverse side of invoice or packing slip for additional terms and conditions of sale.