

Sigma-Aldrich Laborchemikalien GmbH D-30918 Seelze
Telefon: +49 5137 8238-150

Seelze, 06.03.2009/937587/08/01774

Order-No.:

Customer-No.:

Order-Code:

Quantity:

Production Date: 21.Jan.2008

Expiry Date: 21.Jan.2015

Article/Product: 31298

Batch : SZE8021X

Dimethyl terephthalate PESTANAL®

Reference Material (RM)

1. General Information

Formula: C₁₀H₁₀O₄

CAS-No.: [120-61-6]

Usage :

Molar mass: 194.18 g/Mole

Recomm. storage temp.: roomtemp.

The estimated uncertainty of a single measurement of the assay can be expected to be 0.5 % relative (confidence level = 95%, n= 6) whereby the assay measurements are calculated by 100% minus found impurities.

2. Batch Analysis

Identity (NMR)

Assay (HPLC)

Water (Karl Fischer)

Melting range

Date of Analysis

complying	
99.9	area %
0.06	%
142.2-142.7	°C
11.Feb.2008	

3. Advice and Remarks

- The minimum shelf life is based on the current knowledge and holds only for proper storage conditions in the originally closed flasks/ packages.
- Whenever the container is opened for removal of aliquot portions of the substance, the person handling the substance must assure, that the integrity of the substance is maintained and proper records of all its handlings are kept. Special care has to be taken to avoid any contamination or adulteration of the substance.
- We herewith confirm that the delivery is effected according to the technical delivery conditions agreed.
- A sample of the above mentioned batch showed the listed analytical values.
- Particular properties of the products or the suitability for a particular area of application are not assured.
- We guarantee a proper quality within our General Conditions of Sales.

Sigma-Aldrich Laborchemikalien GmbH
Quality Assurance



Works Inspector

Honeywell Specialty Chemicals Seelze GmbH
Analytical Department

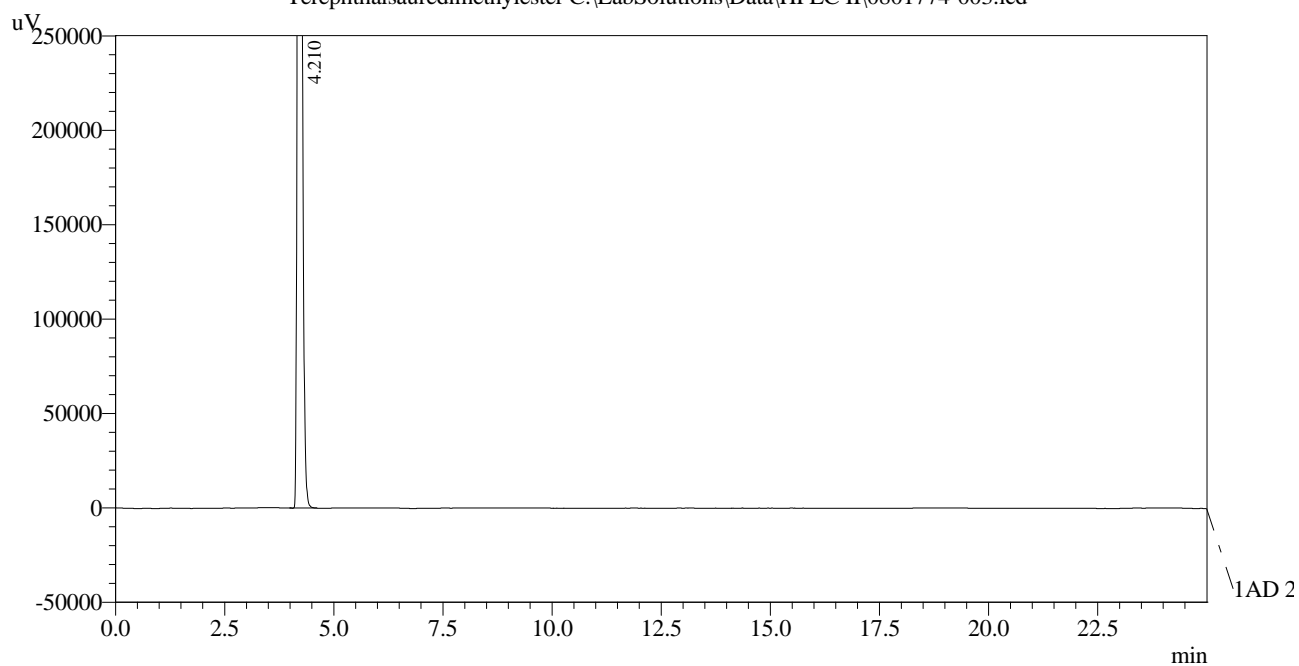
HPLC-Method

Article : Dimethyl terephthalate
Article-No : 31298
Batch : SZE8021X

Column : L=250mm, ID=4,6mm; Supelcosil LC-18 5µm
Eluent : 60 % Acetonitrile
40 % Water

Detector : UV-225nm
Injection-Volume : 10µl
Sample-Preparation : 0,2mg/ml
Linearity : checked
Evaluation : Normalisation (uncorrected)
Operator : Schowe

Chromatogram
Terephthalsäuredimethylester C:\LabSolutions\Data\HPLC II\0801774-003.lcd



1 AD 2 /

PeakTable

AD2 Ch1 Peak#	Ret. Time	Area	Area %
1	4.210	5362682	100.000
Total		5362682	100.000