

Sigma-Aldrich Laborchemikalien GmbH D-30918 Seelze
Telefon: +49 5137 8238-150

Seelze, 10.06.2008/890672/05/12787

Order-No.:
Customer-No.:

Order-Code:

Quantity:

Production Date: 24.Jun.2005

Expiry Date: 24.Jun.2012

Article/Product: **32053**

Batch : **5175X**

Bronopol PESTANAL® (2-Bromo-2-nitropropane-1,3-diol)

Reference Material (RM)

1. General Information

Formula: C₃H₆BrNO₄

CAS-No.: [52-51-7]

Usage : Bactericide

Molar mass: 199.99 g/Mole

Recomm. storage temp.: roomtemp.

The estimated uncertainty of a single measurement of the assay can be expected to be 0.5 % relative (confidence level = 95%, n= 6) whereby the assay measurements are calculated by 100% minus found impurities.

2. Batch Analysis

Identity (NMR)

Assay (HPLC)

Melting range

Date of Analysis

complying
99.9 area %
127-127.6 °C
22.Jul.2005

3. Advice and Remarks

- The minimum shelf life is based on the current knowledge and holds only for proper storage conditions in the originally closed flasks/ packages.
- Whenever the container is opened for removal of aliquot portions of the substance, the person handling the substance must assure, that the integrity of the substance is maintained and proper records of all its handlings are kept. Special care has to be taken to avoid any contamination or adulteration of the substance.
- We herewith confirm that the delivery is effected according to the technical delivery conditions agreed.
- A sample of the above mentioned batch showed the listed analytical values.
- Particular properties of the products or the suitability for a particular area of application are not assured.
- We guarantee a proper quality within our General Conditions of Sales.

Sigma-Aldrich Laborchemikalien GmbH
Quality Assurance



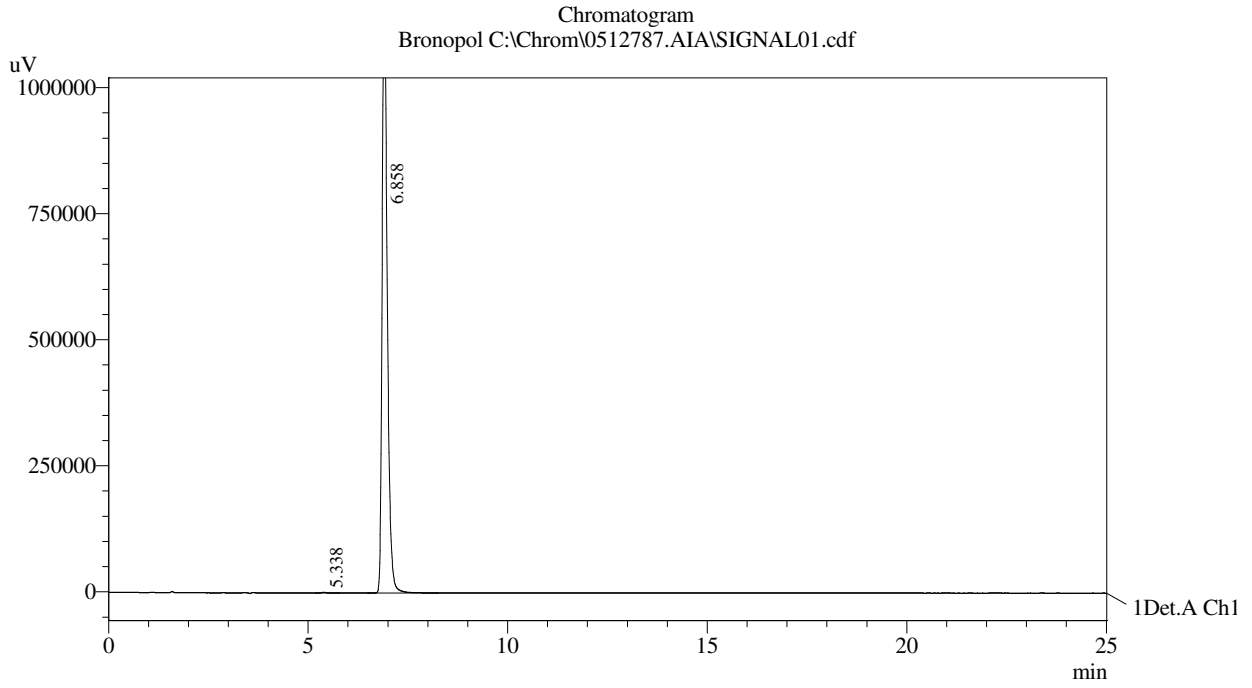
Works Inspector

Honeywell Specialty Chemicals Seelze Gmbh
Analytical Department

HPLC-Method

Article : Bronopol
Article-No : 32053
Batch : 5175X

Column : L=250mm, ID=4,6mm; Supelcosil LC-18
Eluent : Acetonitrile 10 %
Water 90 %
Flow : 1,4ml/min
Detector : UV-200nm
Injection-Volume : 20µl
Sample-Preparation : 0,3mg/ml
Linearity : checked
Evaluation : Normalisation (uncorrected)
Operator : Schowe



PeakTable

Ch1	Ret. Time	Area	Area %
	5.338	11	0.098
	6.858	10768	99.902
		10779	100.000