

CERTIFICATE OF ANALYSIS

Sigma-Aldrich Laborchemikalien GmbH D-30918 Seelze
Telefon: +49 5137 8238-150

Seelze, 18.01.2011/156558/09/11097

Order-No.:

Customer-No.:

Order-Code:

Quantity:

Production Date: 12.Jun.2009

Expiry Date: 12.Jun.2016

Article/Product: 45529

Batch : SZB9163XV

2-Phenylphenol PESTANAL®

Reference Material (RM)**1. General Information**

Formula: C₁₂H₁₀O

CAS-No.: [90-43-7]

Usage : Fungicide

Molar mass: 170.21 g/Mole

Recomm. storage temp.: roomtemp.

The estimated uncertainty of a single measurement of the assay can be expected to be 0.5 % relative (confidence level = 95%, n= 6) whereby the assay measurements are calculated by 100% minus found impurities.

2. Batch Analysis

Identity (NMR)

Assay (GC)

Water (Karl Fischer)

Melting range

Date of Analysis

complying	
99.9	area %
0.15	%
56.5-57.7	°C
07.Jul.2009	

3. Advice and Remarks

- The minimum shelf life is based on the current knowledge and holds only for proper storage conditions in the originally closed flasks/ packages.
- Whenever the container is opened for removal of aliquot portions of the substance, the person handling the substance must assure, that the integrity of the substance is maintained and proper records of all its handlings are kept. Special care has to be taken to avoid any contamination or adulteration of the substance.
- We herewith confirm that the delivery is effected according to the technical delivery conditions agreed.
- Particular properties of the products or the suitability for a particular area of application are not assured.
- We guarantee a proper quality within our General Conditions of Sales.

Sigma-Aldrich Laborchemikalien GmbH
Quality Management SA-LC

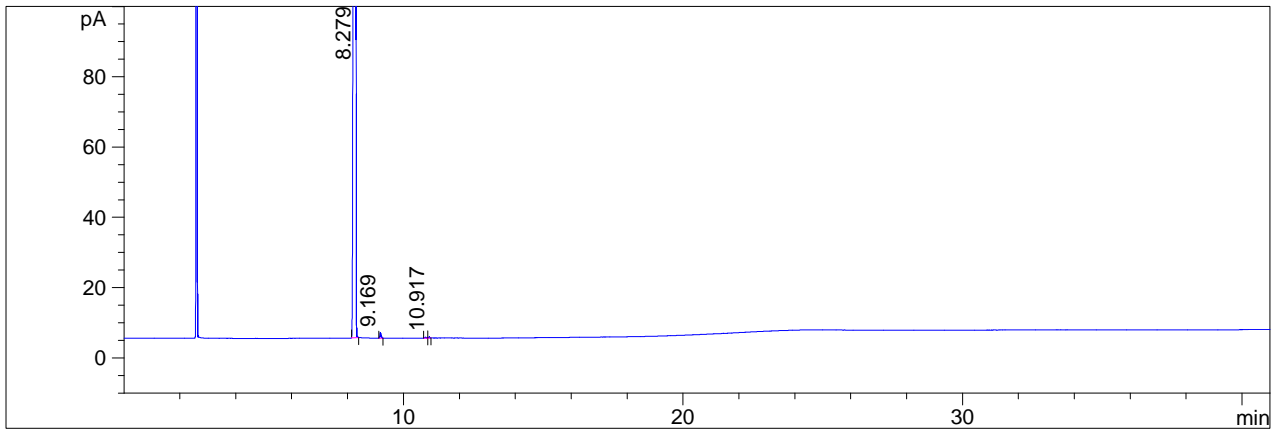
Analytical Department

GLC-Method

Article : 2-Phenylphenol
Article-No : 45529
Batch : SZB9163XV

Column : MDN-5, 30m, 0,25mm i.D., 0,25µm Film
Inj.-Temp. : 300°C
Det.-Temp. : 320°C - FID
Oven-Temp. : 150°C (2min) to 300°C (10°/min) hold 10min
Split : 1:100
Flow : 1,5ml He/min
Inj.v. : 1µl solution in DCM (10%)
Evaluation : Normalisation (uncorrected)
Operator : Schuster

C H R O M A T O G R A M M



Area Percent Report

#	Meas. R	Height	Area	Area %
1	8.279	1044.567	4391.83	99.8686
2	9.169	1.543	4.33	0.0985
3	10.788	0.245	0.67	0.0152
4	10.917	0.288	0.78	0.0178
