

Product Information

SUPELCO WAX 10 Capillary Columns

Supelco General Purpose Capillary Columns

Supelco's most popular columns find use in many routine environmental and chemical analyses. Inert, reproducible and ready to ship, Supelco's capillary GC columns can handle a majority of today's separation needs.

SUPELCO WAX 10: A Polar Column

If unable to separate all compounds of interest on a non-polar column, try running the analysis on a polar column like the SUPELCO WAX 10. A SUPELCO WAX 10 will often resolve critical polar compound pairs that will not separate by boiling point alone.

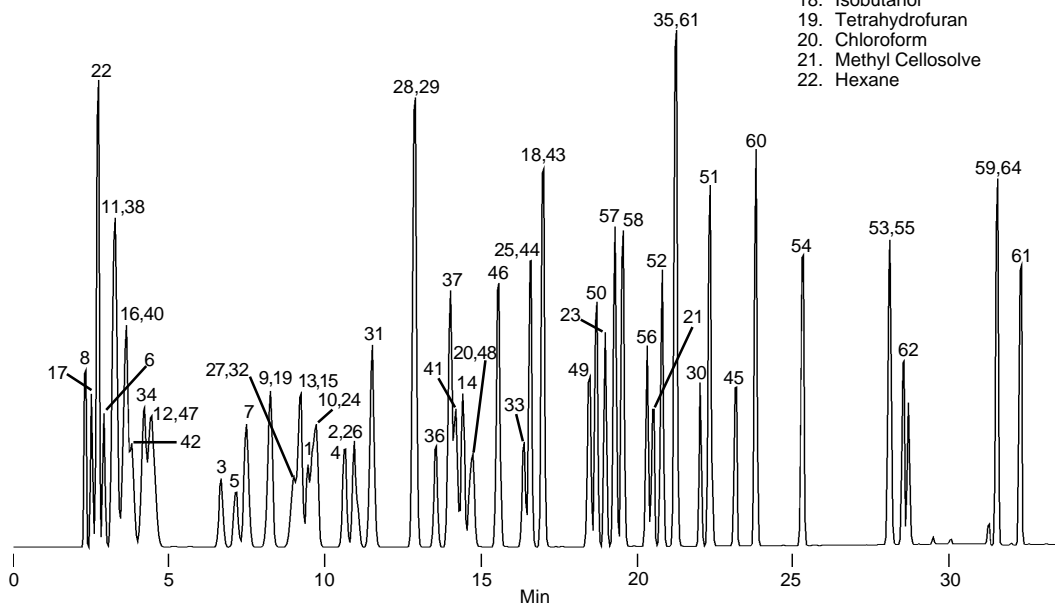
SUPELCO WAX 10 is the bonded equivalent to the CARBOWAX 20M phase, with much higher thermal stability. Because this phase offers higher polarity than any of the phenylsilicone phases, it is widely used for separation and purity analyses of many polar compounds, including alcohols, aromatics, and other solvents, flavors, fragrances and FAMES.

Common Industrial Solvents Analysis on SUPELCO WAX 10

Operating Conditions: Chemically compatible with water and other injection solvents. Columns can be rinsed.

Phase: bonded; CARBOWAX 20M poly (ethylene glycol)
Temp. Limits: 35°C to 280°C
Column: SUPELCO WAX 10, 60m x 0.53mm ID, 2.0µm film
Cat. No.: 25376
Oven: 40°C (5 min) to 220°C at 5°C/min
Carrier: helium, 5mL/min
Det.: FID, 300°C
Inj.: 0.2-0.3µL, split injection, 250°C

- | | |
|---------------------------------|--|
| 1. Methanol | 23. 1-Butanol |
| 2. Ethanol | 24. Isopropyl acetate |
| 3. Acetone | 25. 1,2-Dichloroethane |
| 4. Isopropanol | 26. 1-Chlorobutane |
| 5. Methyl acetate | 27. 1,1,1-Trichloroethane |
| 6. Ethyl ether | 28. 2-Pentanone |
| 7. Methylene chloride | 29. 3-Pentanone |
| 8. Pentane | 30. Ethyl Cellosolve |
| 9. trans-1,2-Dichloroethylene | 31. Benzene |
| 10. Methyl ethyl ketone (MEK) | 32. Carbon tetrachloride |
| 11. Methyl t-butyl ether (MTBE) | 33. 1,4-Dioxane |
| 12. 1,1-Dichloroethylene | 34. Cyclohexane |
| 13. 1,1-Dichloroethane | 35. Isopentanol |
| 14. 2-Butanol | 36. 1,1,2-Trichloroethylene |
| 15. Ethyl acetate | 37. Methyl isobutyl ketone (MIBK) |
| 16. Isopropyl ether | 38. 2,2,4-Trimethylpentane (isooctane) |
| 17. 2-Methylpentane | 39. 4-Methyl-2-pentanone |
| 18. Isobutanol | 40. Heptane |
| 19. Tetrahydrofuran | 41. Isobutyl acetate |
| 20. Chloroform | 42. Dimethylhexane |
| 21. Methyl Cellosolve | 43. 2-Hexanone |
| 22. Hexane | 44. n-Butyl acetate |
| | 45. 2-Methoxyethyl acetate |
| | 46. Toluene |
| | 47. 2,2,5-Trimethylhexane |
| | 48. 1,1,2,2-Tetrachloroethylene |
| | 49. Isopentyl acetate |
| | 50. 4-Heptanone |
| | 51. Chlorobenzene |
| | 52. 2-Heptanone |
| | 53. Cyclohexanol |
| | 54. Cyclohexanone |
| | 55. Butyl Cellosolve |
| | 56. n-Pentyl acetate |
| | 57. p-Xylene |
| | 58. m-Xylene |
| | 59. 1,1,2,2-Tetrachloroethane |
| | 60. Styrene |
| | 61. o-Xylene |
| | 62. 2-Methylcyclohexanol |
| | 63. 1-Octanol |
| | 64. 1,2-Dichlorobenzene |



794-0791

General Purpose Capillary Columns Offer...

- individual testing for efficiency, inertness, and retention
- a report showing the column performance before it left Supelco
- compact foam lined packaging that takes up less shelf space and protects the column during shipping and storage
- a compact, specially designed cage that minimizes column wear and fits better in newer, smaller ovens

Ordering Information:

	LENGTH (m)	D, (µm)	BETA	CAT. NO.	
SUPELCOWAX 10					
0.10mm ID FUSED SILICA	5	0.10	250	25025-U	
	10	0.10	250	25026-U	
	15	0.10	250	24343	
0.20mm ID FUSED SILICA	30	0.20	250	24169	
	60	0.20	250	24170	
0.25mm ID FUSED SILICA	15	0.25	250	24077	
	30	0.25	250	24079	
	60	0.25	250	24081	
	30	0.50	125	24284	
0.32mm ID FUSED SILICA	15	0.25	320	24078	
	30	0.25	320	24080-U	
	60	0.25	320	24082	
	15	0.50	160	24083	
	30	0.50	160	24084	
	60	0.50	160	24085-U	
	30	1.0	80	24211	
	60	1.0	80	24212	
	0.53mm ID FUSED SILICA	15	0.50	265	25324
		30	0.50	265	25325
60		0.50	265	25385	
15		1.0	133	25300-U	
30		1.0	133	25301-U	
60		1.0	133	25391	
30		2.0	63	25375-U	
60	2.0	63	25376		

Trademarks

SPB, Supelco, and SUPELCOWAX are registered trademarks of Sigma-Aldrich Co.



For expert answers to your questions contact our Technical Service Department:

Phone **800-359-3041, 814-359-3041**

Fax **800-359-3044, 814-359-5468**

E-mail **techservice@sial.com**

To download Supelco's free technical literature visit us at **sigma-aldrich.com/supelco-literature**

sigma-aldrich.com/supelco

Order/Customer Service 800-247-6628, 800-325-3010 • Fax 800-325-5052 • E-mail supelco@sial.com

Technical Service 800-359-3041, 814-359-3041 • Fax 800-359-3044, 814-359-5468 • E-mail techservice@sial.com

SUPELCO • Supelco Park, 595 North Harrison Road, Bellefonte, PA 16823-0048 • 814-359-3441



We are committed to the success of our Customers, Employees and Shareholders through leadership in Life Science, High Technology and Service.

The SIGMA-ALDRICH Family  SIGMA  ALDRICH  Fluka  Riedel-deHaen  SUPELCO

© 2001 Sigma-Aldrich Co. Printed in USA. Supelco brand products are sold through Sigma-Aldrich, Inc. Sigma-Aldrich, Inc. warrants that its products conform to the information contained in this and other Sigma-Aldrich publications. Purchaser must determine the suitability of the product(s) for their particular use. Additional terms and conditions may apply. Please see reverse side of the invoice or packing slip.



T401200A
ENF