

## Product Information

### CAP Kits for Agilent Technologies GCs (Column and Accessories Performance Kits)

#### Reduce Your Risk, Prevent Problems, Save Time and Money

Teaming Supelco's capillary GC columns with our high performance accessories will reduce the risk of chromatographic problems and instrument downtime.

The CAP Kit includes your choice of:

- Capillary GC Column
- Inlet Liners
- O-Ring Seals
- Column Nuts
- Inlet Seals
- Septa
- Ferrules

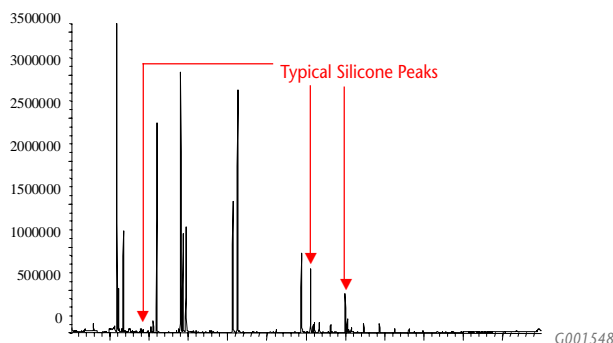
#### Here's the Proof:

##### Septa

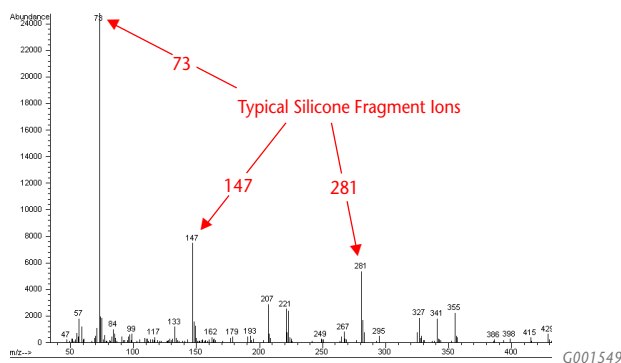
Inspect and replace your injection port septum daily

- Eliminate leaks
- Prevent septa particles in your inlet
- Stop septa related bleed
- Remove extra peaks

#### Septa Contamination in Inlet Liner



#### Mass Spectrum of Septa Contamination in Inlet Liner

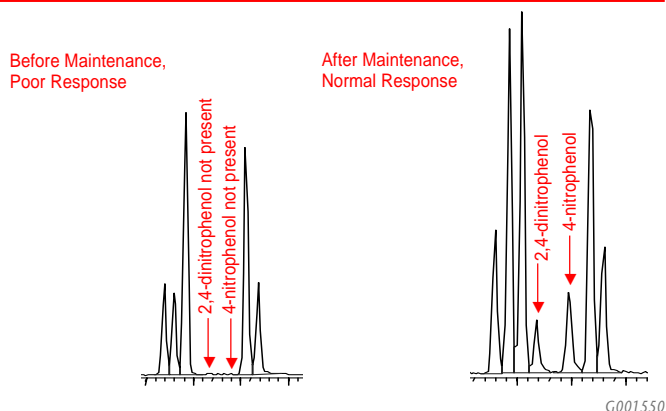


#### Liners/Seals

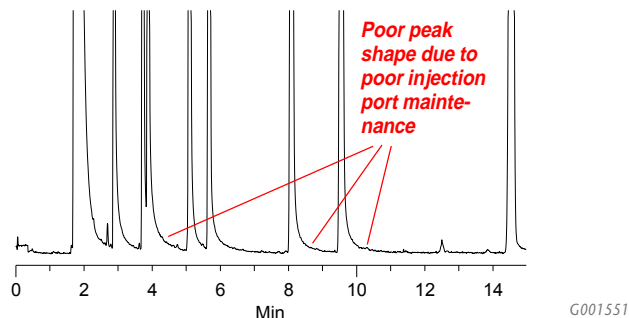
Inspect and replace your inlet liner and seals routinely

- Eliminate contaminants and active sites
- Improve peak shapes
- Increase compound responses
- Remove extra peaks

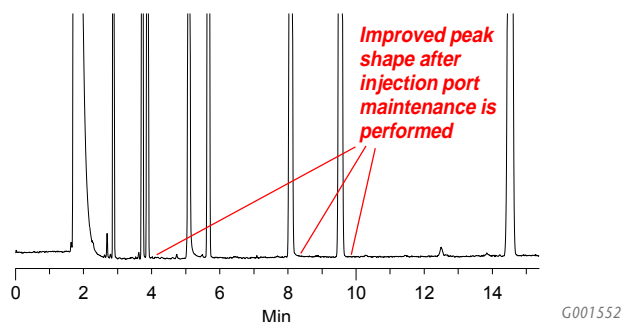
#### Chromatography Problems with a Dirty Liner



#### Poor Chromatography before Inlet Maintenance



#### Normal Chromatography after Inlet Maintenance



## Ferrules

Replace your ferrules with each column change or maintenance

- Stop fitting from leaking
- Extend column life
- Eliminate retention time shifts, baseline drift, and sample loss
- Avoid ferrule bleed

## Ordering Information:

To order your CAP Kit:

...select your choice of a Supelco capillary GC column.

Refer to the Supelco Catalog or [sigma-aldrich.com/supelco](http://sigma-aldrich.com/supelco) for a complete listing of Supelco's capillary GC columns.

...and select your choice of one or more GC accessory items from each of the following six categories and receive the CAP Kit case FREE!

Accessory items are for Agilent Technologies instrument models 4890, 5880, 5890, 6890.

### 1. INLET LINERS

#### Split Injection

78.5x6.3mm, 4mm ID, wool packed (pk/5)	20486,05
78.5x6.3mm, cup design (pk/5)	20510,05
78.5x6.3mm, cup design, wool packed (pk/5)	20482,05

#### Splitless

78.5x6.5mm, tapered (pk/5)	20466,05
78.5x6.5mm, tapered, wool packed (pk/5)	20478,05
78.5x6.5mm, 2mm ID (pk/5)	20513,05
78.5x6.5mm, dual tapered (pk/5)	20485,05

#### Direct/Wide-Bore

78.5x6.5mm, 1.5mm ID (pk/5)	20517,05
78.5x6.3mm, 0.75mm ID (pk/5)	26375,05

### 2. SEPTA

Thermogreen LB-2 Septa, 11.0mm (7/16") (pk/50)	20654
Thermogreen LB-2 Septa, 9.5mm (3/8") (pk/50)	20652

### 3. FERRULES

#### GC Inlet - Supeltex M-4 Graphite

0.20-0.25mm Column ID: Ferrules (pk/50)	24819-U
0.32mm Column ID: Ferrules (pk/50)	24813-U
0.53mm Column ID: Ferrules (pk/50)	24812-U

#### GC Inlet - Supeltex M-2A Vespel-Graphite

0.20-0.25mm Column ID: Ferrules (pk/50)	24807-U
0.32mm Column ID: Ferrules (pk/50)	24806-U
0.53mm Column ID: Ferrules (pk/50)	24804-U

#### GC/MS Interface - Supeltex M-2A Vespel-Graphite

0.20-0.25mm Column ID: Ferrules (pk/10)	24826-U
0.32mm Column ID: Ferrules (pk/10)	24824-U
0.53mm Column ID: Ferrules (pk/10)	24823-U

### 4. INLET SEALS

Gold-Plated (pk/10)	23319-U
Stainless-Steel (pk/10)	23317-U

### 5. O-RING SEALS

Therm-O-Ring Seals (pk/25)	21004-U
----------------------------	---------

### 6. COLUMN NUTS

Column Nut for 1/16" Ferrules (pk/2)	24833-U
Brass Nut for GC/MS Interface (pk/2)	28034-U

### CAP KIT CASE

GC Accessory Case for Agilent Technologies	28035-U
--------------------------------------------	---------



P000919

#### Trademarks

Agilent Technologies - Agilent Technologies  
VESPEL - E. I. du Pont de Nemours & Co., Inc.  
CapSeal Bullet, Supeltex, Thermogreen, Therm-O-Ring - Sigma-Aldrich Co.

[sigma-aldrich.com/supelco](http://sigma-aldrich.com/supelco)

Order/Customer Service 800-247-6628, 800-325-3010 • Fax 800-325-5052 • E-mail [supelco@sial.com](mailto:supelco@sial.com)

Technical Service 800-359-3041, 814-359-3041 • Fax 800-359-3044, 814-359-5468 • E-mail [techservice@sial.com](mailto:techservice@sial.com)

SUPELCO • Supelco Park, 595 North Harrison Road, Bellefonte, PA 16823-0048 • 814-359-3441



We are committed to the success of our Customers, Employees and Shareholders through leadership in Life Science, High Technology and Service.

The SIGMA-ALDRICH Family



SIGMA



ALDRICH



Fluka



Riedel-deHaen

SUPELCO



T402020  
EOJ

© 2002 Sigma-Aldrich Co. Printed in USA. Supelco brand products are sold through Sigma-Aldrich, Inc. Sigma-Aldrich, Inc. warrants that its products conform to the information contained in this and other Sigma-Aldrich publications. Purchaser must determine the suitability of the product(s) for their particular use. Additional terms and conditions may apply. Please see reverse side of the invoice or packing slip.