

Product Information

CAP Kits for Varian GCs (Column and Accessories Performance Kits)

Reduce Your Risk, Prevent Problems, Save Time and Money

Teaming Supelco's capillary GC columns with our high performance accessories will reduce the risk of chromatographic problems and instrument downtime.

The CAP Kit includes your choice of:

- Capillary GC Column
- Inlet Liners
- Column Nuts
- Septa
- Ferrules

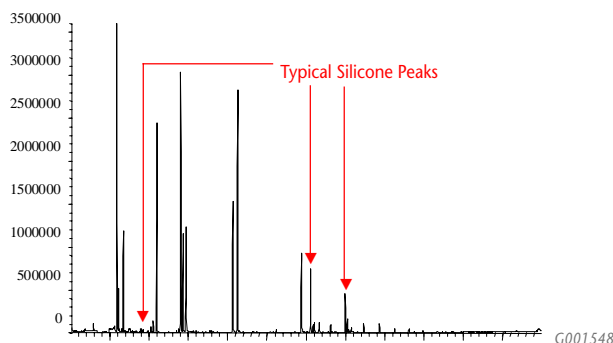
Here's the Proof:

Septa

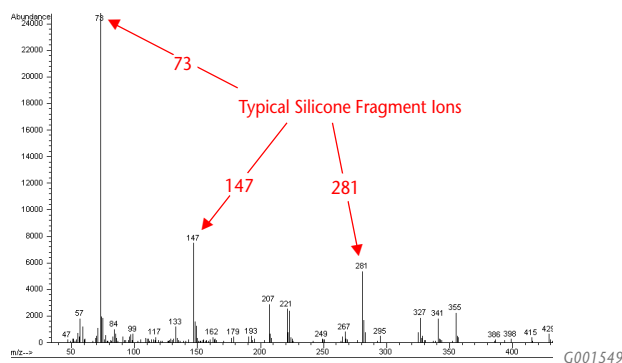
Inspect and replace your injection port septum daily

- Eliminate leaks
- Prevent septa particles in your inlet
- Stop septa related bleed
- Remove extra peaks

Septa Contamination in Inlet Liner



Mass Spectrum of Septa Contamination in Inlet Liner

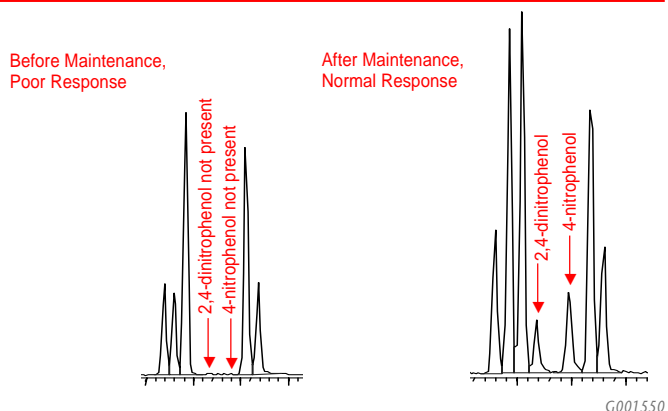


Liners/Seals

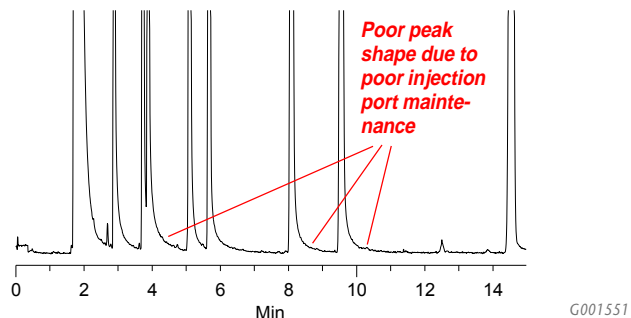
Inspect and replace your inlet liner and seals routinely

- Eliminate contaminants and active sites
- Improve peak shapes
- Increase compound responses
- Remove extra peaks

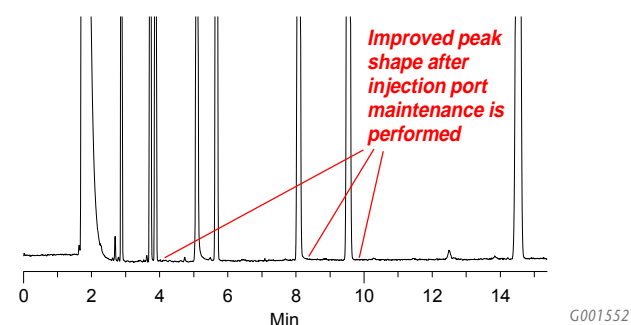
Chromatography Problems with a Dirty Liner



Poor Chromatography before Inlet Maintenance



Normal Chromatography after Inlet Maintenance



Ferrules

Replace your ferrules with each column change or maintenance

- Stop fitting from leaking
- Extend column life
- Eliminate retention time shifts, baseline drift, and sample loss
- Avoid ferrule bleed

Ordering Information:

To order your CAP Kit:

...select your choice of a Supelco capillary GC column.

Refer to the Supelco Catalog or sigma-aldrich.com/supelco for a complete listing of Supelco's capillary GC columns.

...and select your choice of one or more GC accessory items from each of the following four categories and receive the CAP Kit case FREE!

1. INLET LINERS

Model 1177 CP Injector

Split Injection

78.5x6.3mm, 4mm ID, wool packed (pk/5)	20486,05
78.5x6.3mm, cup design (pk/5)	20510,05
78.5x6.3mm, cup design, wool packed (pk/5)	20482,05
78.5x6.3mm, cup design, 10% OV-1 on Chromosorb packed (pk/5)	20551,05

Splitless

78.5x6.5mm, tapered (pk/5)	20466,05
78.5x6.5mm, tapered, wool packed (pk/5)	20478,05
78.5x6.5mm, 2mm ID (pk/5)	20513,05
78.5x6.5mm, dual tapered (pk/5)	20485,05

Direct/On-Column/Other

78.5x6.5mm, 1.5mm ID (pk/5)	20517,05
78.5x6.3mm, 0.75mm ID (pk/5)	26375,05

Model 1075/1077 Injector

Split Injection

72x6.3mm, with frit (pk/5)	20505,05
72x6.3mm, packed w/OV-101 on Chromosorb (pk/5)	20555,05
72x6.3mm, unpacked (pk/5)	26361,05
72x6.3mm, w/baffle	20501,05
72x6.3mm, wool packed	26360,05
72x6.3mm, w/cup, unpacked	20498,05

Splitless

74x6.3mm, straight (pk/5)	20502,05
74x6.35mm, SPME 0.75mm ID (pk/5)	26358,05

Direct/On-Column/Other

72x6.3mm, fused silica (pk/5)	26362,05
73mmx0.25, universal flash, 0.53mm ID columns (pk/5)	26368,05

Model 1075/1077 Injector

Direct/On-Column/Other

54x4.6mm, direct injection (pk/5)	26363,05
54x4.6mm, flash on-column (pk/5)	26364,05
54x4.6mm, wool packed (pk/5)	26365,05

2. SEPTA

Thermogreen LB-2 Septa, 11.0mm (7/16") (pk/50)	20654
Thermogreen LB-2 Septa, 11.5mm (11/24") (pk/50)	23154
Thermogreen LB-2 Septa, 9mm (11/32") (pk/50)	28021-U

3. FERRULES - Varian Style Nut

Supeltex M-4 Graphite

0.20-0.25mm Column ID: Ferrules (pk/50)	28028-U
0.32mm Column ID: Ferrules (pk/50)	28031-U
0.53mm Column ID: Ferrules (pk/50)	28032-U

Supeltex M-2A VESPEL Graphite

0.20-0.25mm Column ID: Ferrules (pk/50)	28022-U
0.32mm Column ID: Ferrules (pk/50)	28023-U
0.53mm Column ID: Ferrules (pk/50)	28024-U
For all Liners: 1/4" Ferrules (pk/10)	22481

CapSeal Bullet Graphite-A1 Base

0.20-0.25mm Column ID: Ferrules (pk/48)	23493
0.32mm Column ID: Ferrules (pk/48)	23494-U
0.53mm Column ID: Ferrules (pk/48)	23495

4. COLUMN NUTS

Varian Nut	28033-U
------------	---------

CAP KIT CASE

GC Accessory Case for Varian GCs	28036-U
----------------------------------	---------



P000919

Trademarks

CapSeal Bullet, Supeltex, Thermogreen - Sigma-Aldrich Co.
Chromosorb - Celite Corp.
VESPEL - E. I. du Pont de Nemours & Co., Inc.

sigma-aldrich.com/supelco

Order/Customer Service 800-247-6628, 800-325-3010 • Fax 800-325-5052 • E-mail supelco@sial.com

Technical Service 800-359-3041, 814-359-3041 • Fax 800-359-3044, 814-359-5468 • E-mail techservice@sial.com

SUPELCO • Supelco Park, 595 North Harrison Road, Bellefonte, PA 16823-0048 • 814-359-3441



We are committed to the success of our Customers, Employees and Shareholders through leadership in Life Science, High Technology and Service.

The SIGMA-ALDRICH Family



SIGMA



ALDRICH



Fluka



Riedel-deHaen

SUPELCO



T402021
EOK

© 2002 Sigma-Aldrich Co. Printed in USA. Supelco brand products are sold through Sigma-Aldrich, Inc. Sigma-Aldrich, Inc. warrants that its products conform to the information contained in this and other Sigma-Aldrich publications. Purchaser must determine the suitability of the product(s) for their particular use. Additional terms and conditions may apply. Please see reverse side of the invoice or packing slip.