

Product Information

CAP Kits for PerkinElmer GCs (Column and Accessories Performance Kits)

Reduce Your Risk, Prevent Problems, Save Time and Money

Teaming Supelco's capillary GC columns with our high performance accessories will reduce the risk of chromatographic problems and instrument downtime.

The CAP Kit includes your choice of:

- Capillary GC Column
- Inlet Liners
- Column Nuts
- O-Ring Seals
- Septa
- Ferrules

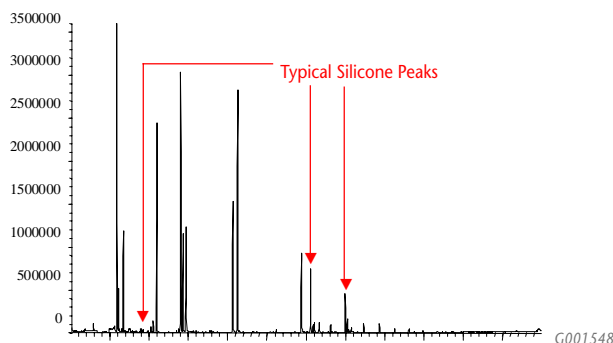
Here's the Proof:

Septa

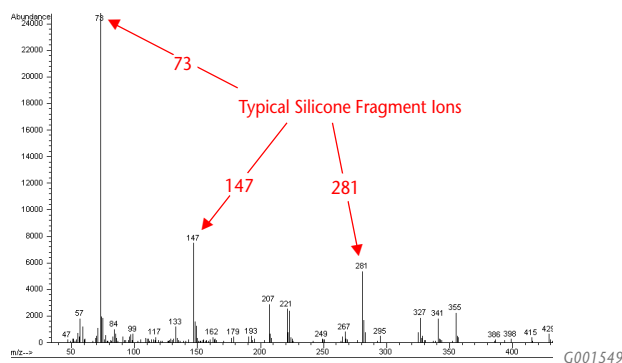
Inspect and replace your injection port septum daily

- Eliminate leaks
- Prevent septa particles in your inlet
- Stop septa related bleed
- Remove extra peaks

Septa Contamination in Inlet Liner



Mass Spectrum of Septa Contamination in Inlet Liner

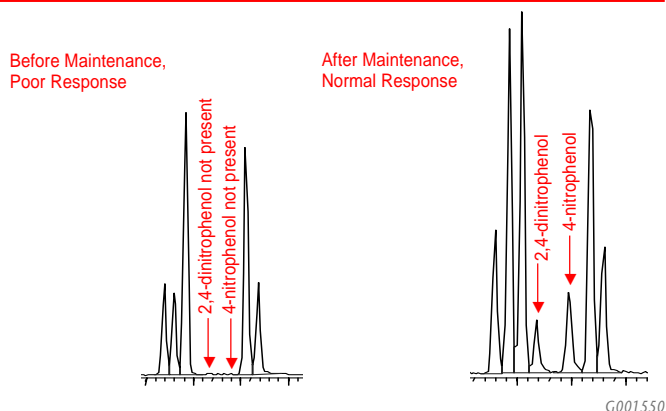


Liners/Seals

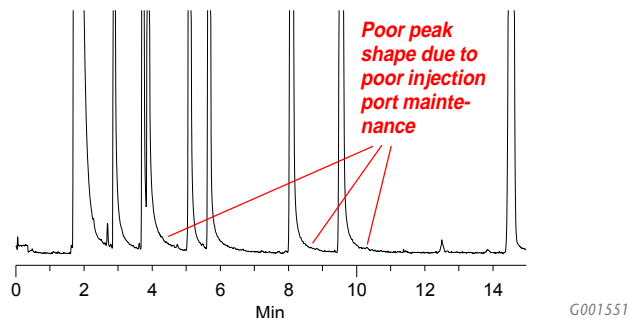
Inspect and replace your inlet liner and seals routinely

- Eliminate contaminants and active sites
- Improve peak shapes
- Increase compound responses
- Remove extra peaks

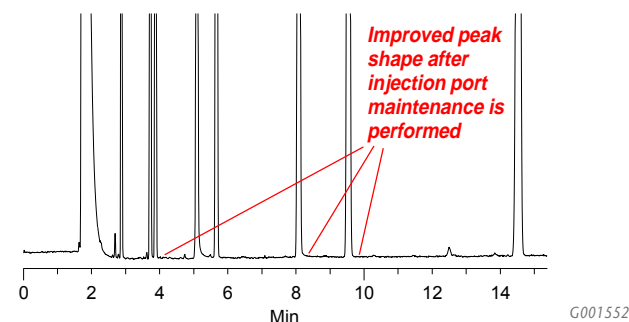
Chromatography Problems with a Dirty Liner



Poor Chromatography before Inlet Maintenance



Normal Chromatography after Inlet Maintenance



Ferrules

Replace your ferrules with each column change or maintenance

- Stop fitting from leaking
- Extend column life
- Eliminate retention time shifts, baseline drift, and sample loss
- Avoid ferrule bleed

Ordering Information:

To order your CAP Kit:

...select your choice of a Supelco capillary GC column.

Refer to the Supelco Catalog or sigma-aldrich.com/supelco for a complete listing of Supelco's capillary GC columns.

...and select your choice of one or more GC accessory items from each of the following five categories and receive the CAP Kit case FREE!

1. INLET LINERS

Model 9000

Split Injection

92mmx0.25", 4mm ID (pk/5)	26309,05
92mmx0.25", 4mm ID, wool packed (pk/5)	26310,05

Splitless

92mmx0.25", 2mm ID (pk/5)	26311,05
92mmx0.25", 0.75mm ID SPME (pk/5)	26312,05

PPS (Programmed Split/Splitless)

Split Injection

86x4mm, 2mm ID, (pk/5)	26313,05
------------------------------	----------

Splitless

86x4mm, 1mm ID, (pk/5)	26314,05
------------------------------	----------

Direct/Wide-Bore

86x4mm, on-column, (pk/5)	26315,05
---------------------------------	----------

2. SEPTA

Thermogreen LB-2 Septa, 11.0mm (7/16") (pk/50)	20654
--	-------

3. FERRULES

For use with original PE 1/16" or SSNE Style Nuts

Supeltex M-4 Graphite

0.20-0.25mm Column ID: Ferrules (pk/50)	28028-U
0.32mm Column ID: Ferrules (pk/50)	28031-U
0.53mm Column ID: Ferrules (pk/50)	28032-U

Supeltex M-2A Vespel-Graphite

0.20-0.25mm Column ID: Ferrules (pk/50)	28022-U
0.32mm Column ID: Ferrules (pk/50)	28023-U
0.53mm Column ID: Ferrules (pk/50)	28024-U

CapSeal Bullet Graphite - A1. Base

0.20-0.25mm Column ID: Ferrules (pk/10)	23493
0.32mm Column ID: Ferrules (pk/10)	23494-U
0.53mm Column ID: Ferrules (pk/10)	23495

For use with Swagelok 1/16" Column Fittings

Supeltex M-4 Graphite

0.20-0.25mm Column ID: Ferrules (pk/50)	22480-U
0.32mm Column ID: Ferrules (pk/50)	22412
0.53mm Column ID: Ferrules (pk/50)	22479

Supeltex M-2A Vespel-Graphite

0.20-0.25mm Column ID: Ferrules (pk/50)	22474
0.32mm Column ID: Ferrules (pk/10)	22461
0.53mm Column ID: Ferrules (pk/50)	22473

4. O-RING SEALS

Therm-O-Ring Seals (pk/25)	21004-U
----------------------------------	---------

5. COLUMN NUTS

1/16" Brass Nut (pk/1)	28034-U
Swagelok 1/16" SS Nut (pk/2)	22021

CAP KIT CASE

GC Accessory Case for PerkinElmer GCs	28037-U
---	---------



P000919

Trademarks

Swagelok - Crawford Fitting Co.

VESPEL - E. I. du Pont de Nemours & Co., Inc.

PerkinElmer - PerkinElmer

CapSeal Bullet, Supeltex, Thermogreen, Therm-O-Ring - Sigma-Aldrich Co.

sigma-aldrich.com/supelco

Order/Customer Service 800-247-6628, 800-325-3010 • Fax 800-325-5052 • E-mail supelco@sial.com

Technical Service 800-359-3041, 814-359-3041 • Fax 800-359-3044, 814-359-5468 • E-mail techservice@sial.com

SUPELCO • Supelco Park, 595 North Harrison Road, Bellefonte, PA 16823-0048 • 814-359-3441



We are committed to the success of our Customers, Employees and Shareholders through leadership in Life Science, High Technology and Service.

The SIGMA-ALDRICH Family



SIGMA



ALDRICH



Fluka



Riedel-deHaen



SUPELCO



T402022
EOL

© 2002 Sigma-Aldrich Co. Printed in USA. Supelco brand products are sold through Sigma-Aldrich, Inc. Sigma-Aldrich, Inc. warrants that its products conform to the information contained in this and other Sigma-Aldrich publications. Purchaser must determine the suitability of the product(s) for their particular use. Additional terms and conditions may apply. Please see reverse side of the invoice or packing slip.