

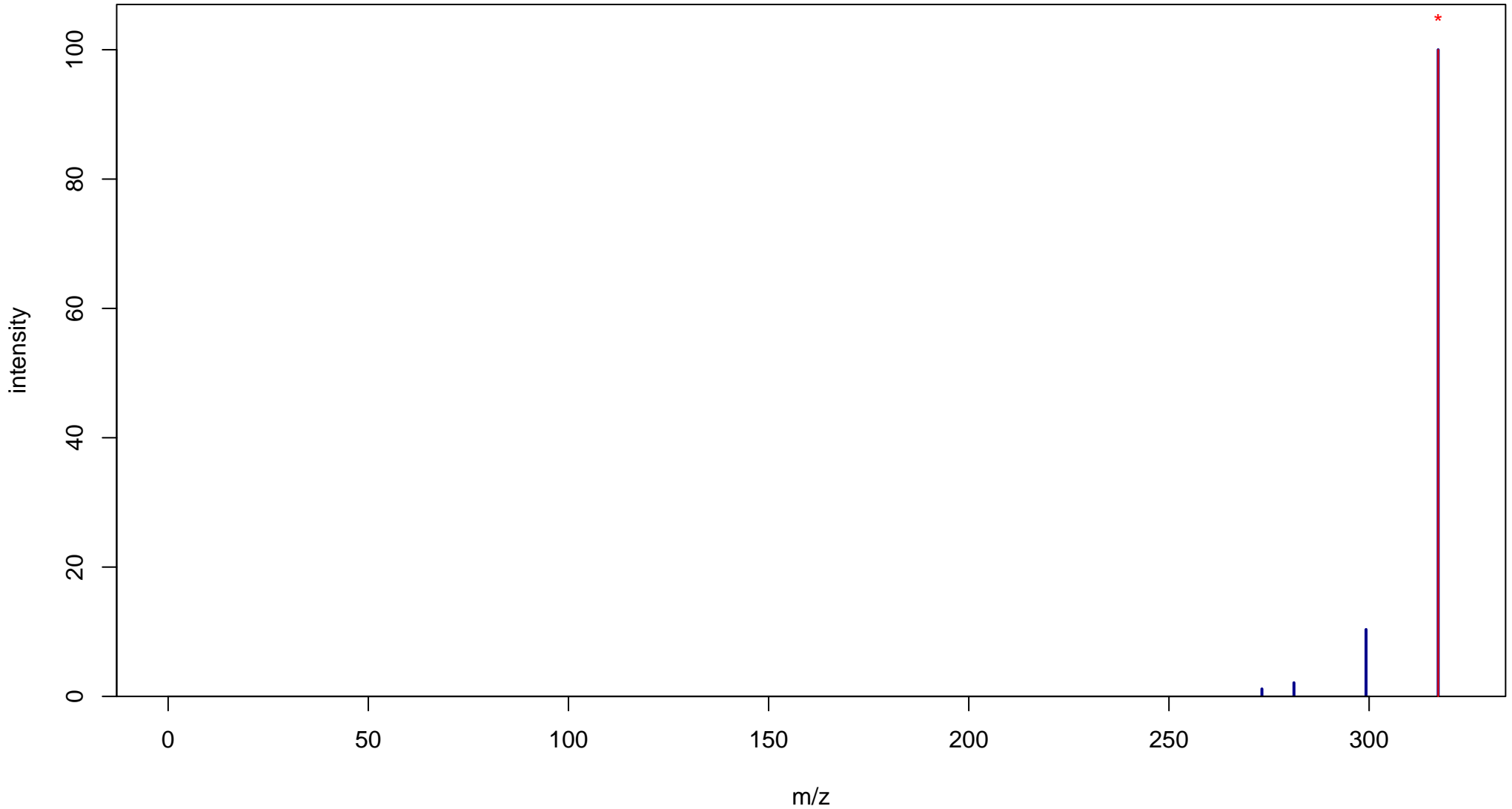
Acetylacetone

Mass: 316.2402 Formula: C₂₁H₃₂O₂

mode: + collisionE: 0V

METLIN ID: 57865 SIGMA Prod: P7754

http://metlin.scripps.edu/metabo_info.php?molid=57865



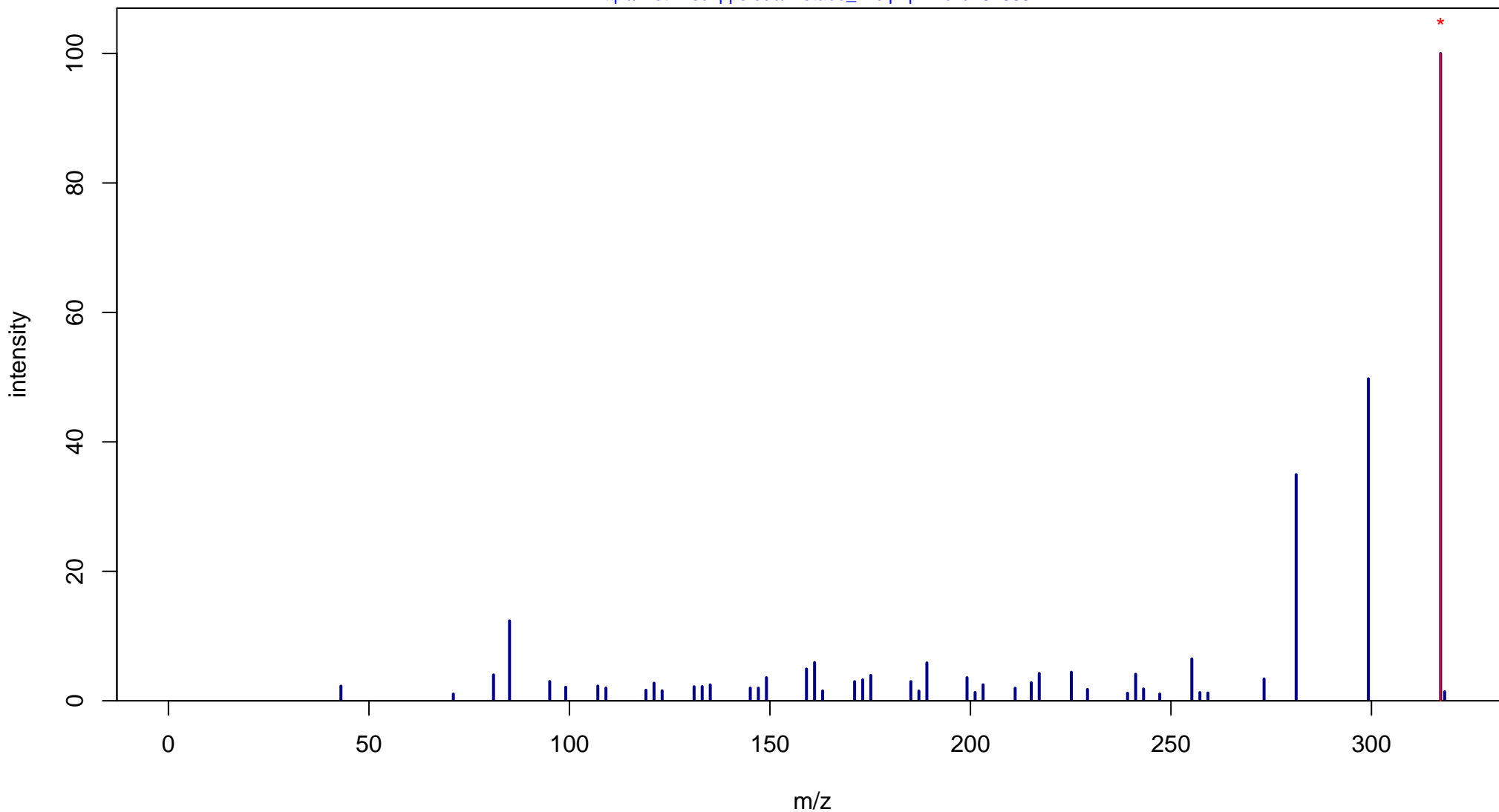
Acetylacetone

Mass: 316.2402 Formula: C₂₁H₃₂O₂

mode: + collisionE: 10V

METLIN ID: 57865 SIGMA Prod: P7754

http://metlin.scripps.edu/metabo_info.php?molid=57865



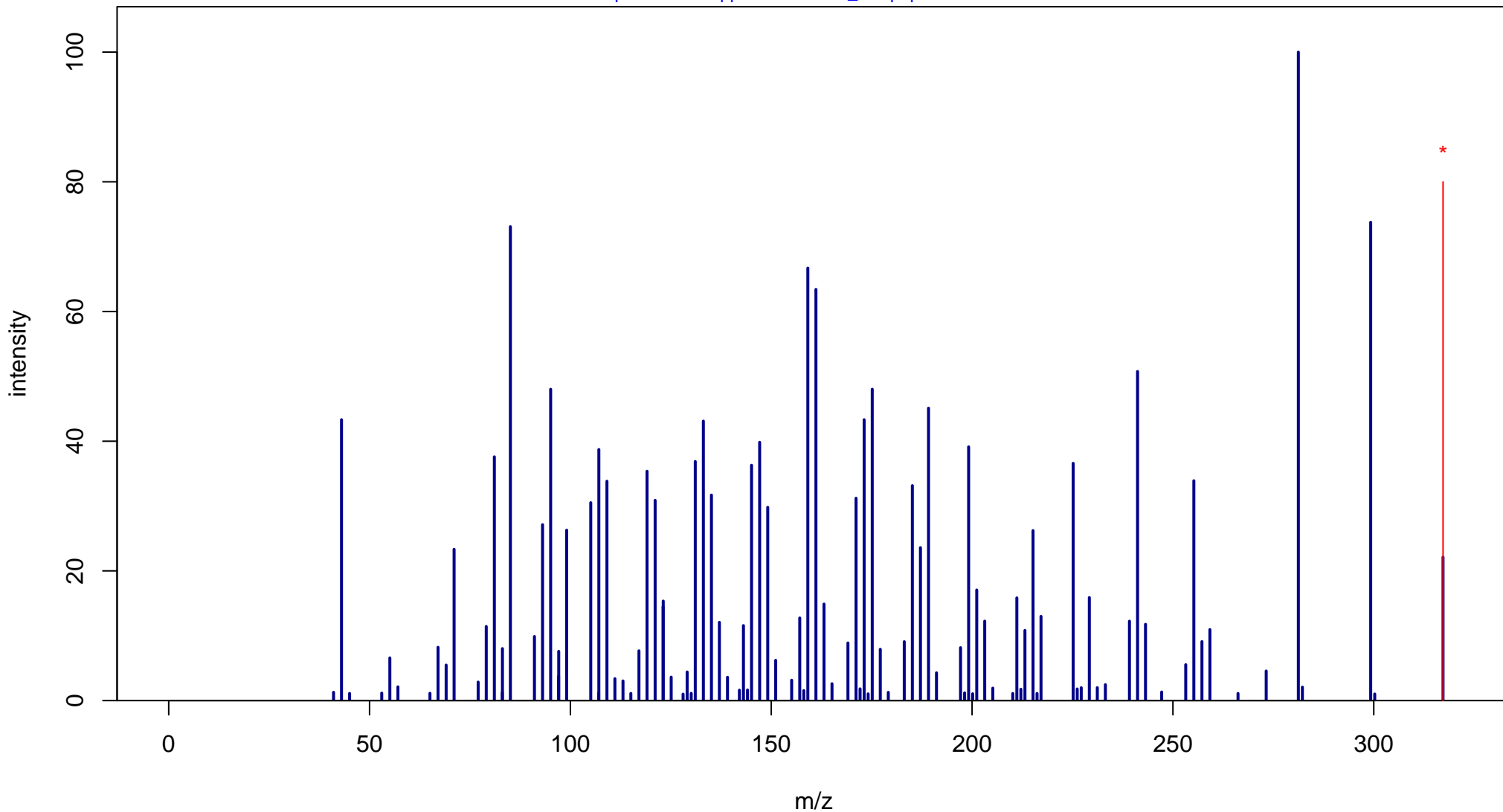
Acetylacetone

Mass: 316.2402 Formula: C₂₁H₃₂O₂

mode: + collisionE: 20V

METLIN ID: 57865 SIGMA Prod: P7754

http://metlin.scripps.edu/metabo_info.php?molid=57865



Acetylacetone

Mass: 316.2402 Formula: C₂₁H₃₂O₂

mode: + collisionE: 40V

METLIN ID: 57865 SIGMA Prod: P7754

http://metlin.scripps.edu/metabo_info.php?molid=57865

