



SIGMA-ALDRICH

3050 Spruce Street
Saint Louis, Missouri 63103 USA
Telephone 800-325-5832 • (314) 771-5765
Fax (314) 286-7828
email: techserv@sial.com
sigma-aldrich.com

Product Information

METHYLPARABEN SIGMA REFERENCE STANDARD

Product No. **M8911**

Lot No: 42K8804

Storage Temperature: room temperature

Formula: $C_8H_8O_3$

Formula Weight: 152.15

CAS No: 99-76-3

Synonyms: Benzoic acid, 4-hydroxy-, methylester.
Methyl *p*-hydroxybenzoate.

Product Description

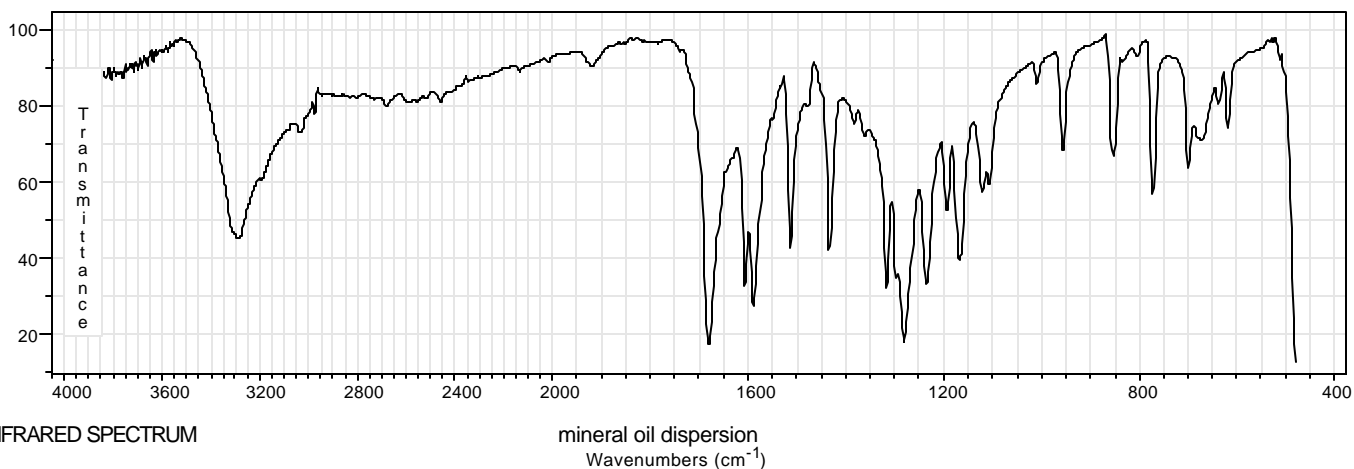
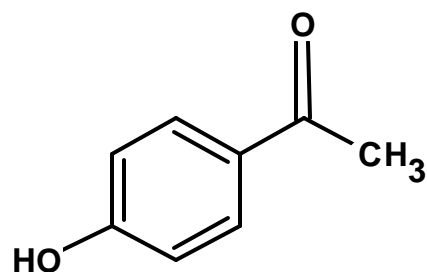
This product meets USP specifications (Current through USP 25, 1st Supplement), and is traceable to USP Reference Standard lot J

Keep tightly closed at room temperature. Dry a portion over silica gel for 5 hours before using. Use promptly. Discard unused material.

TEST	USP 24 SPECIFICATIONS	Result Sigma R.S. Lot 42K8804
Infrared absorption spectrum KBr dispersion (197M)	compares to standard	conforms to USP RS lot J
Identification B	the principal spot obtained in the chromatogram of <i>Test Solution B</i> corresponds in size and R_f to that of the principal spot from <i>Standard solution B</i>	passes
Identification C	passes test	passes
Color of solution	passes test	passes
Acidity	passes test	passes
Residue on ignition (281)	not more than 0.1%	passes
Chromatographic purity (621)	no impurity greater than 0.5%	passes
Melting range (741)	between 125° and 128°	126° - 127°
Organic volatile impurities <i>Method IV</i> (467)	meets requirements	passes
Assay (541)	not less than 99.0% and not more than 100.5%	100.1%

See reverse side for IR spectrum of Sigma Reference Standard.

METHYL PARABEN
SIGMA REFERENCE STANDARD
Product No. **M8911**
Lot 42K8804



4/2002

For R&D use only. Not for drug, household or other uses. Sigma brand products are sold through Sigma-Aldrich, Inc. Sigma-Aldrich, Inc. warrants that its products conform to the information contained in this and other Sigma-Aldrich publications. Purchaser must determine the suitability of the product(s) for their particular use. Additional terms and conditions may apply. Please see reverse side of the invoice or packing slip.