

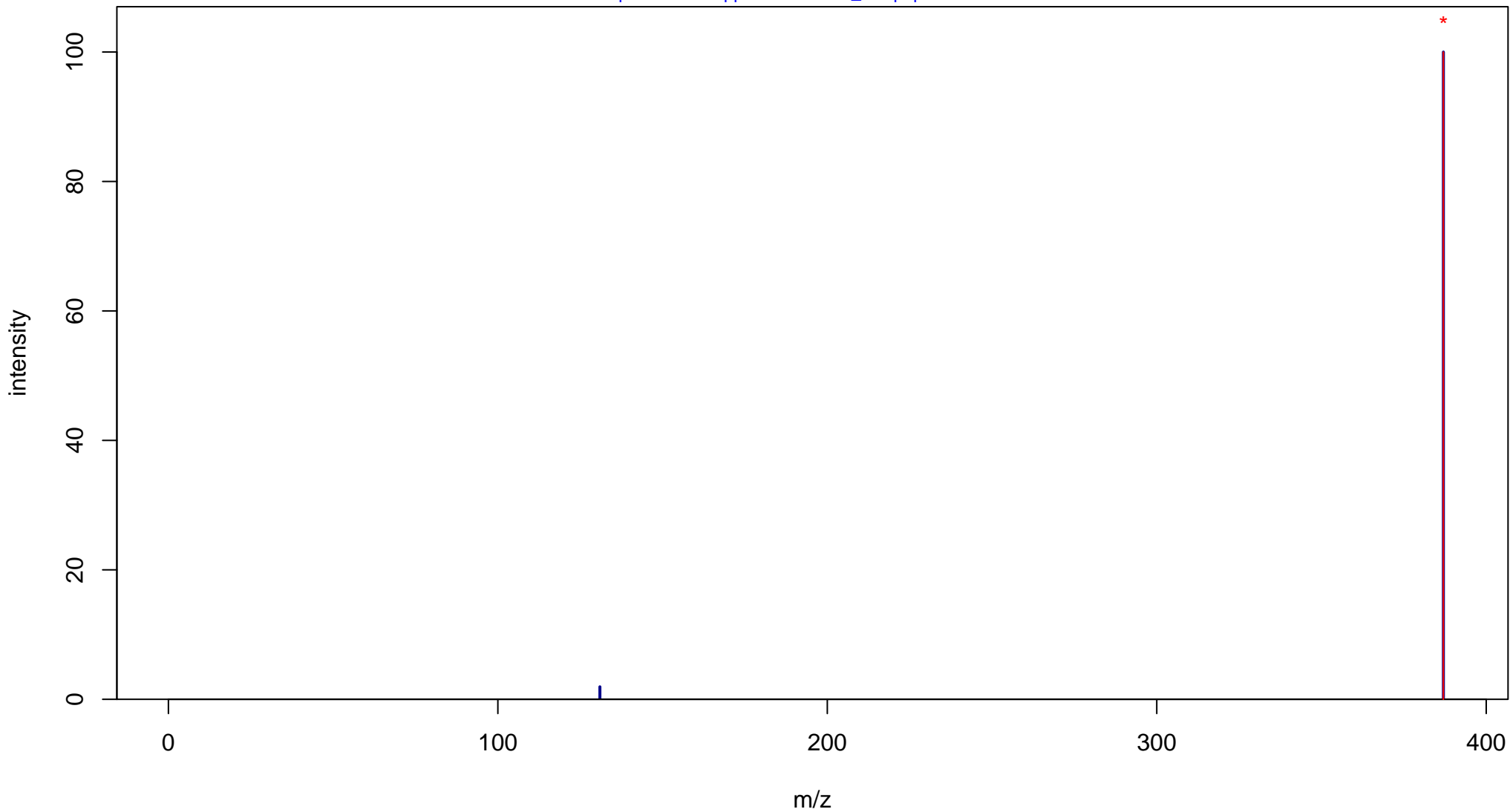
Tioconazole

Mass: 385.9814 Formula: C₁₆H₁₃Cl₃N₂O₂S

mode: + collisionE: 0V

METLIN ID: 2860 SIGMA Prod: 03907

http://metlin.scripps.edu/metabo_info.php?molid=2860



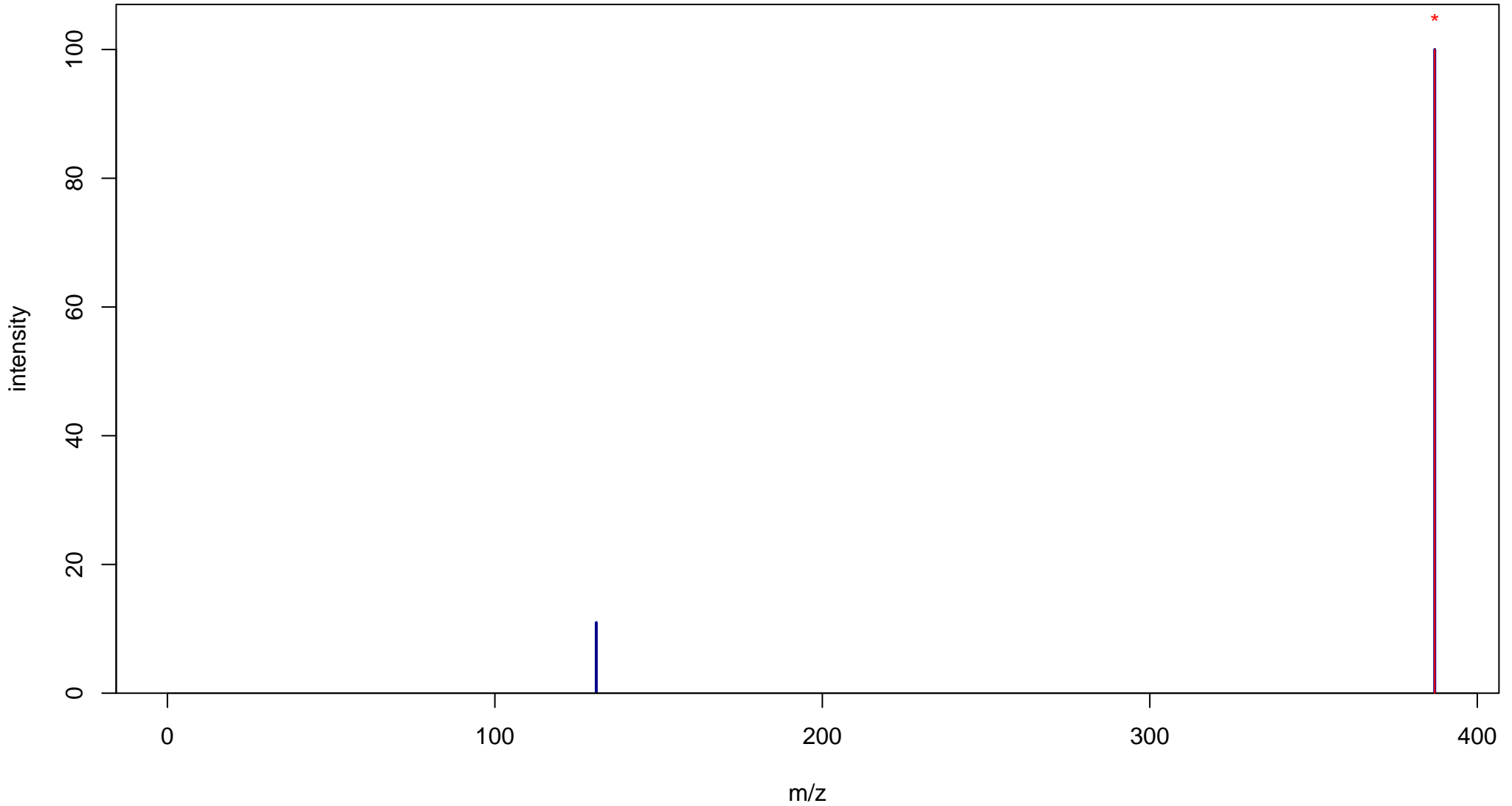
Tioconazole

Mass: 385.9814 Formula: C₁₆H₁₃Cl₃N₂O₂S

mode: + collisionE: 10V

METLIN ID: 2860 SIGMA Prod: 03907

http://metlin.scripps.edu/metabo_info.php?molid=2860



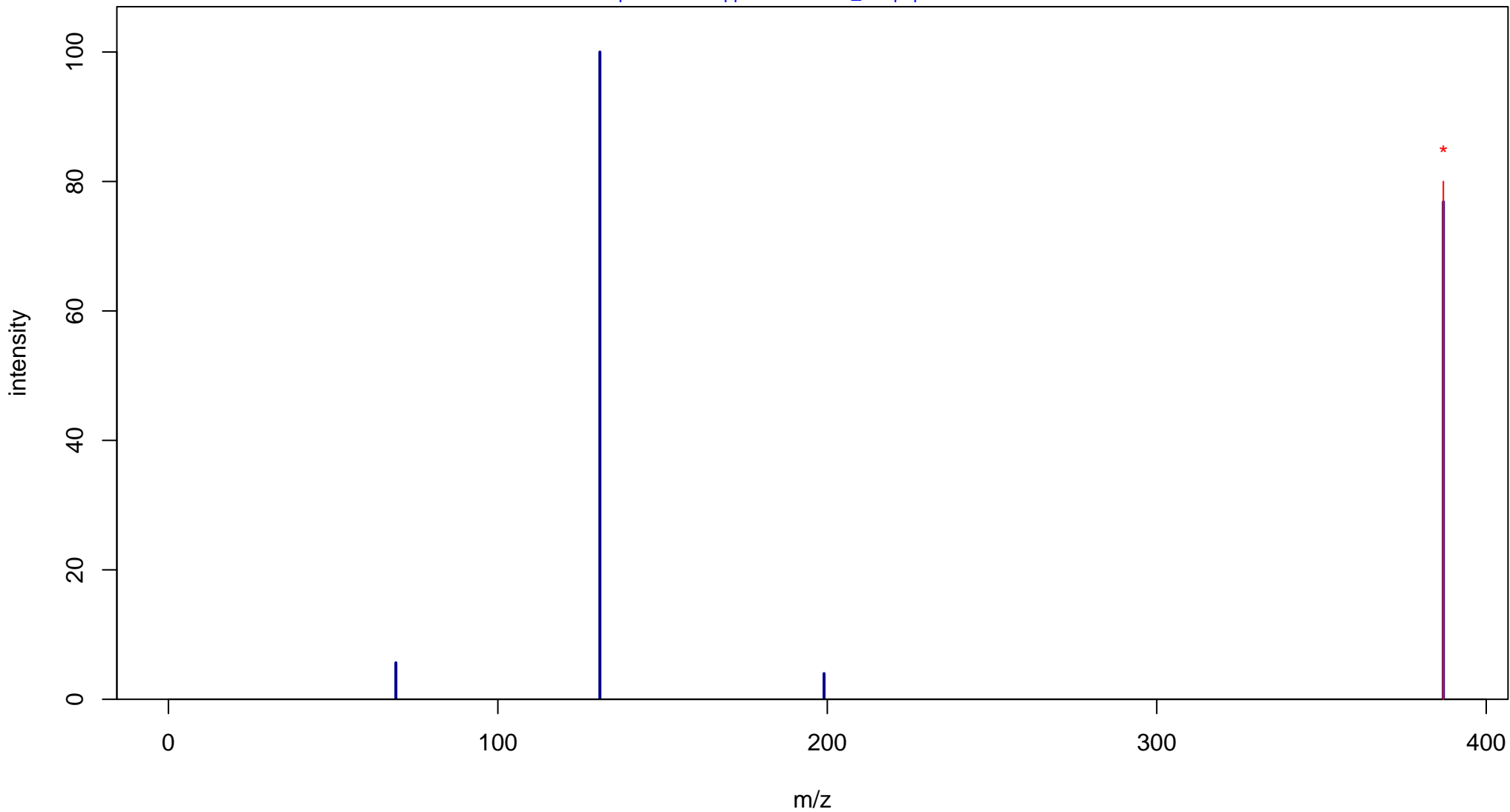
Tioconazole

Mass: 385.9814 Formula: C₁₆H₁₃Cl₃N₂O₂S

mode: + collisionE: 20V

METLIN ID: 2860 SIGMA Prod: 03907

http://metlin.scripps.edu/metabo_info.php?molid=2860



Tioconazole

Mass: 385.9814 Formula: C₁₆H₁₃Cl₃N₂O₂S

mode: + collisionE: 40V

METLIN ID: 2860 SIGMA Prod: 03907

http://metlin.scripps.edu/metabo_info.php?molid=2860

