

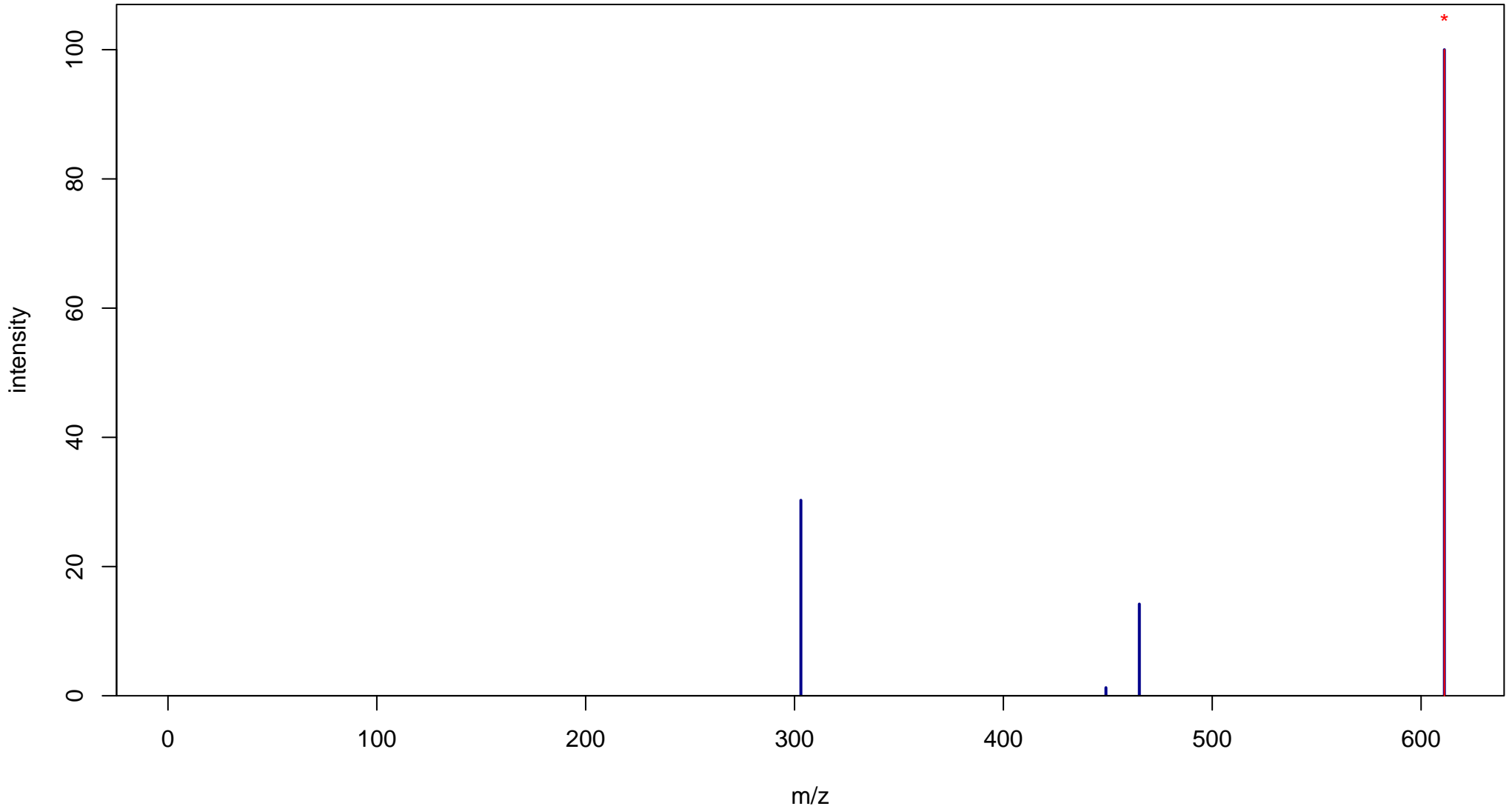
Rutin

Mass: 610.1534 Formula: C₂₇H₃₀O₁₆

mode: + collisionE: 0V

METLIN ID: 3677 SIGMA Prod: 78095

http://metlin.scripps.edu/metabo_info.php?molid=3677



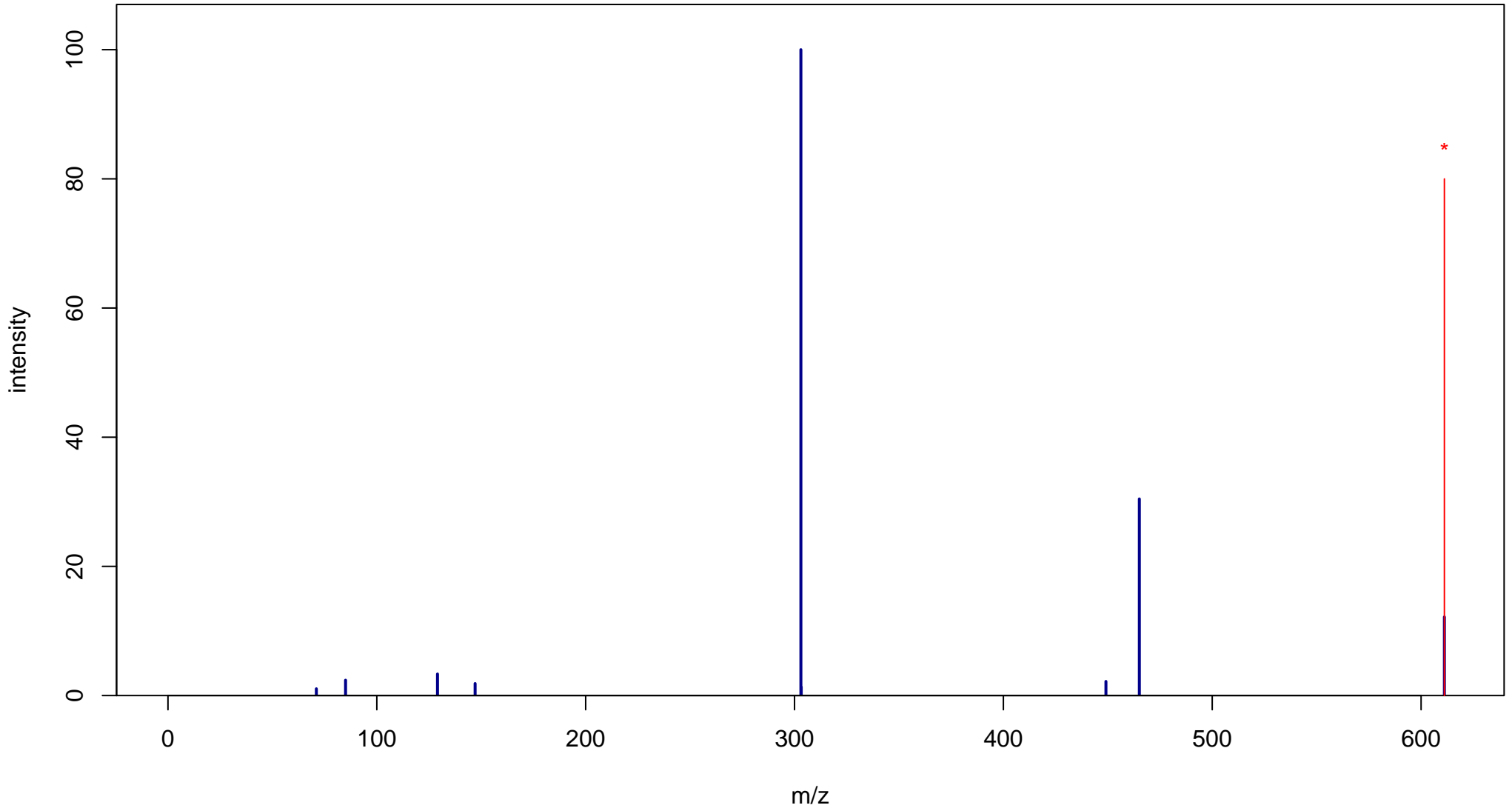
Rutin

Mass: 610.1534 Formula: C₂₇H₃₀O₁₆

mode: + collisionE: 10V

METLIN ID: 3677 SIGMA Prod: 78095

http://metlin.scripps.edu/metabo_info.php?molid=3677



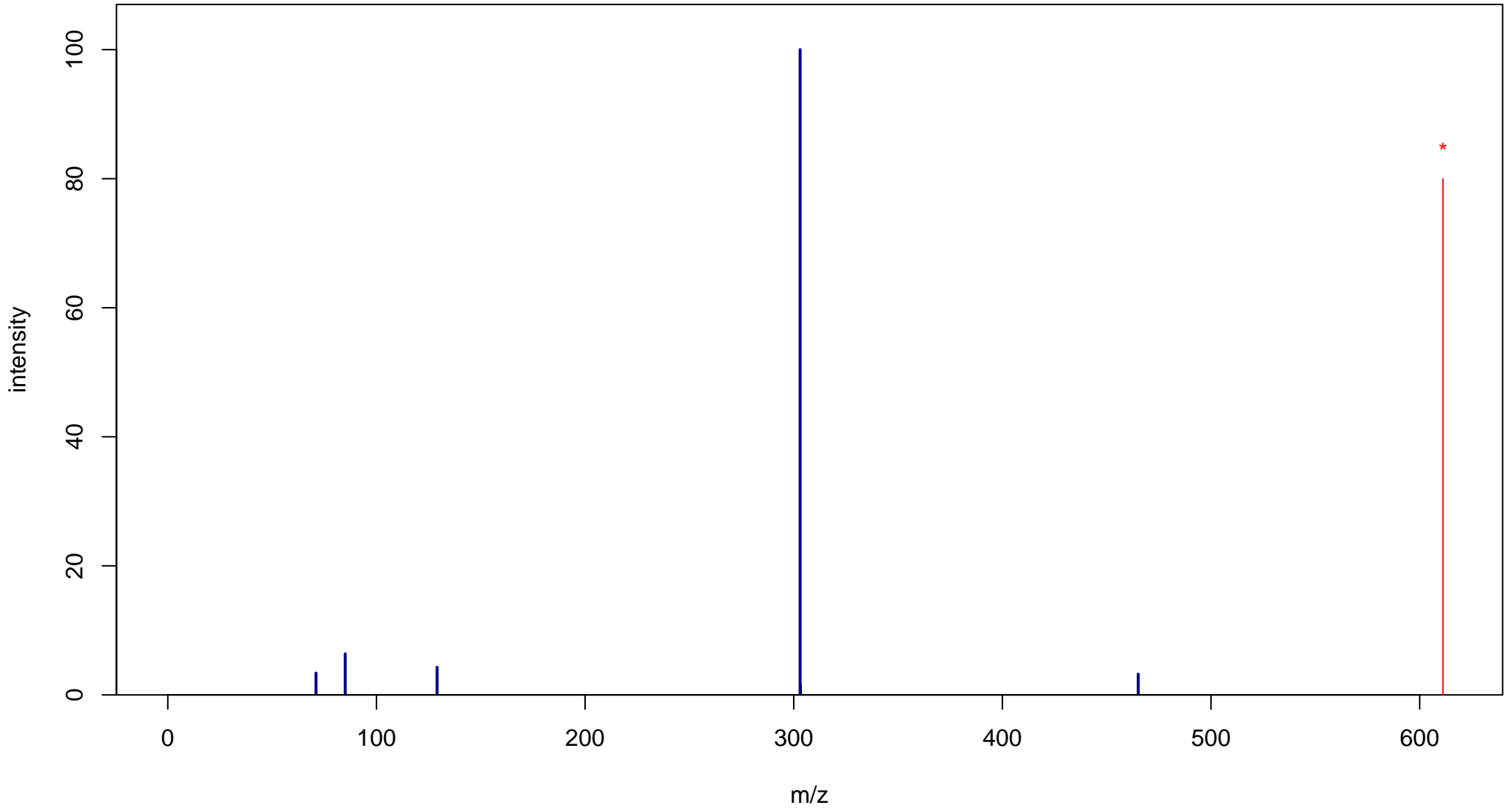
Rutin

Mass: 610.1534 Formula: C₂₇H₃₀O₁₆

mode: + collisionE: 20V

METLIN ID: 3677 SIGMA Prod: 78095

http://metlin.scripps.edu/metabo_info.php?molid=3677



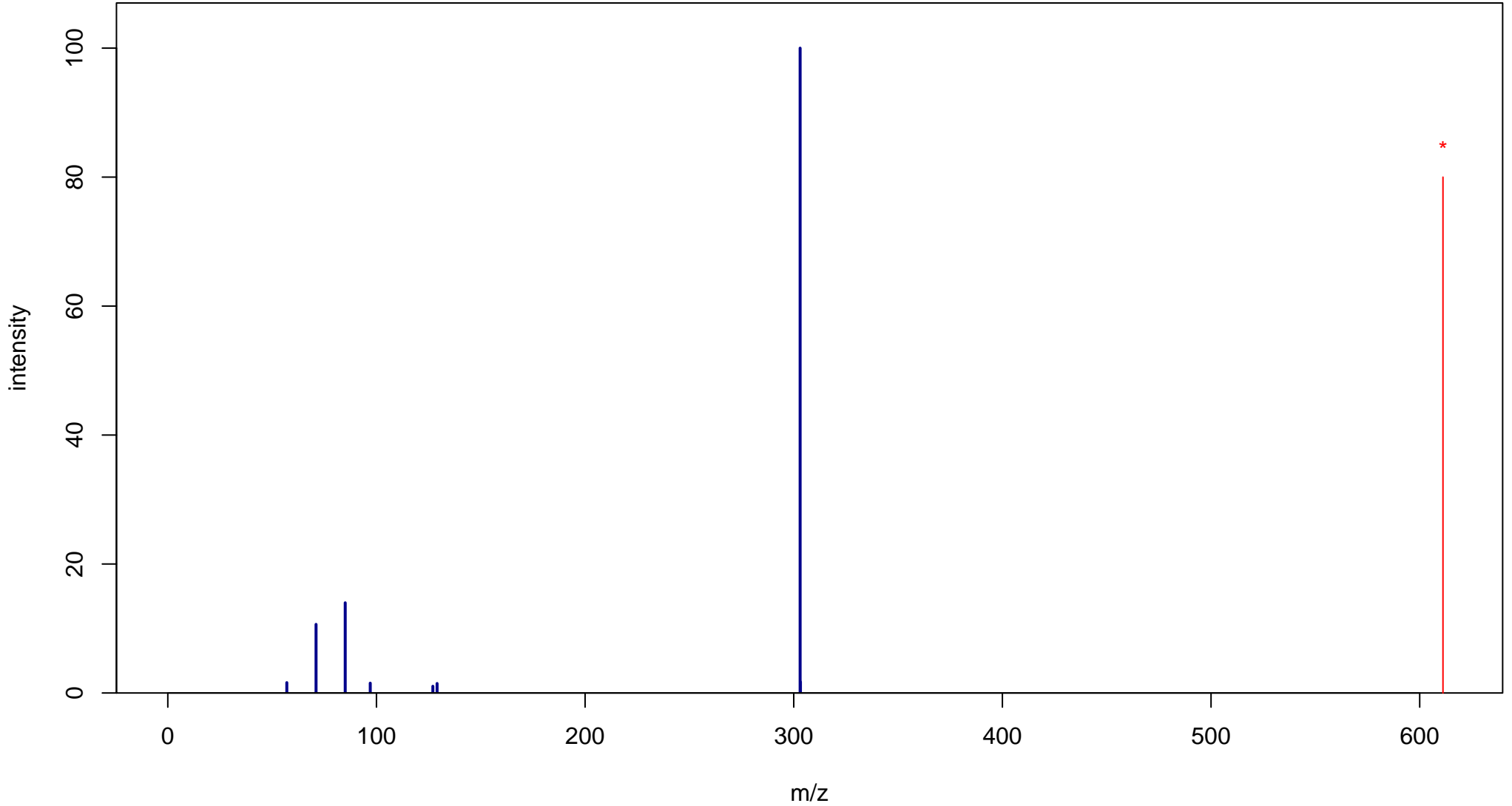
Rutin

Mass: 610.1534 Formula: C₂₇H₃₀O₁₆

mode: + collisionE: 40V

METLIN ID: 3677 SIGMA Prod: 78095

http://metlin.scripps.edu/metabo_info.php?molid=3677



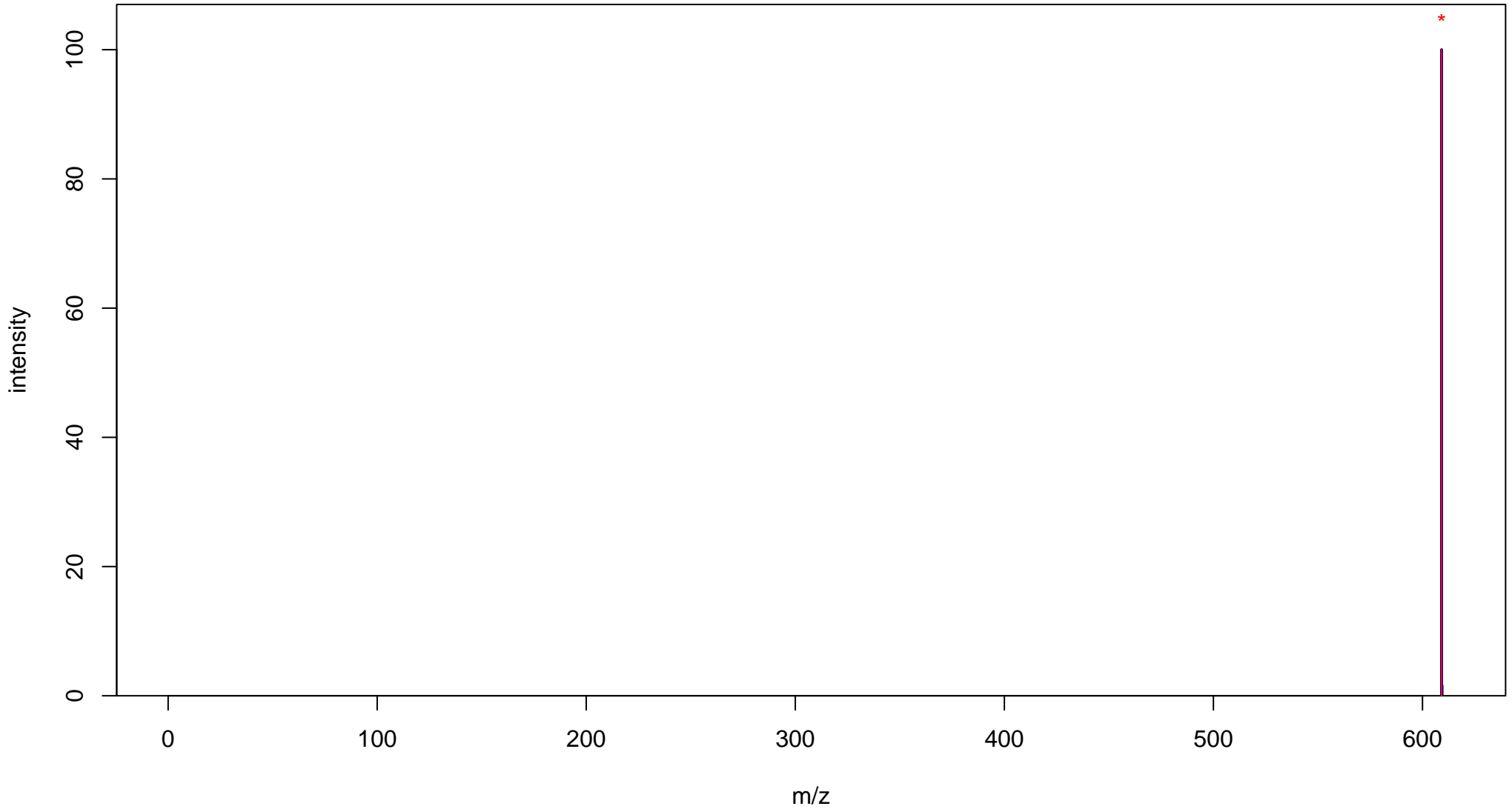
Rutin

Mass: 610.1534 Formula: C₂₇H₃₀O₁₆

mode: - collisionE: 0V

METLIN ID: 3677 SIGMA Prod: 78095

http://metlin.scripps.edu/metabo_info.php?molid=3677



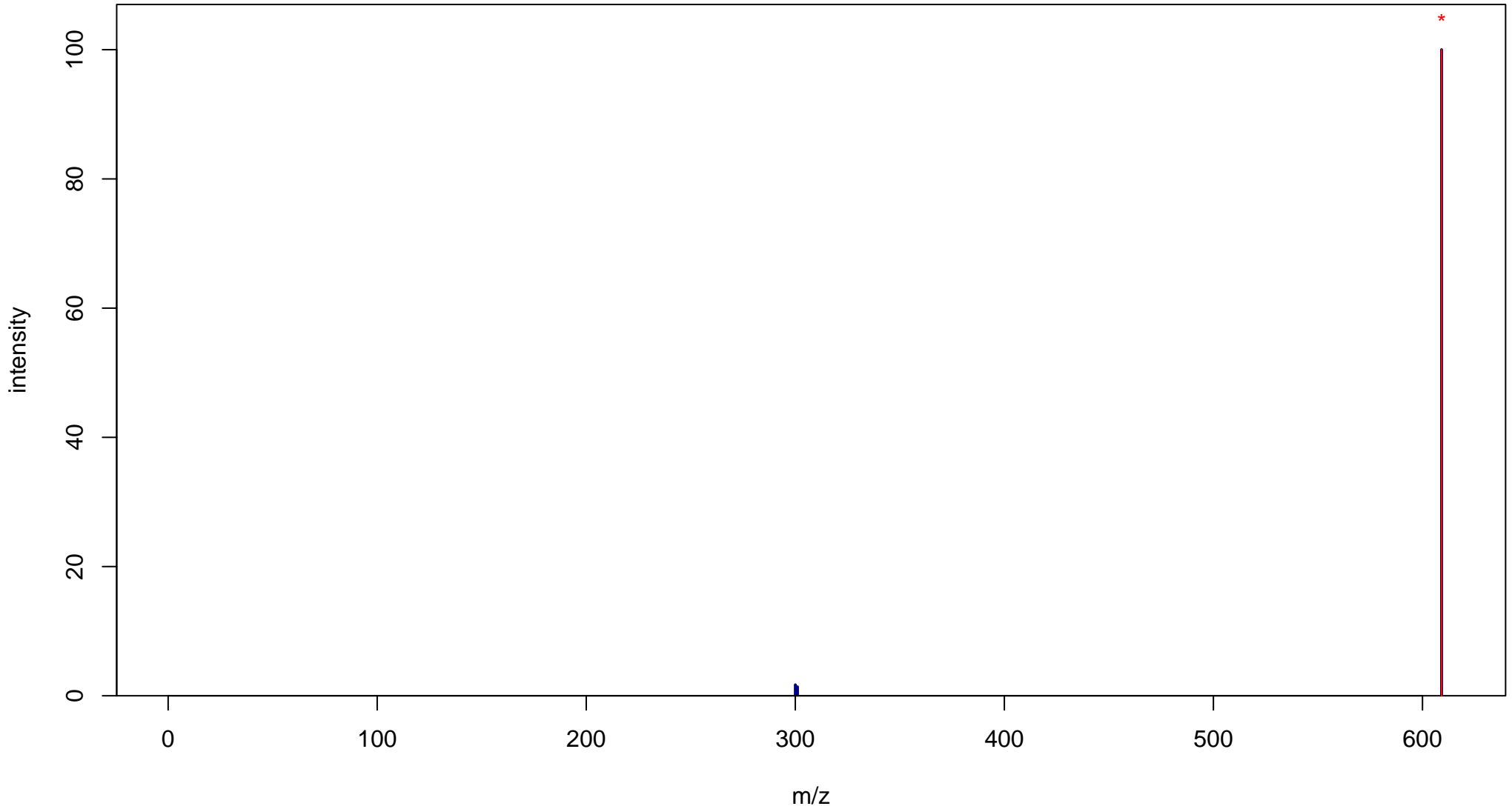
Rutin

Mass: 610.1534 Formula: C₂₇H₃₀O₁₆

mode: - collisionE: 10V

METLIN ID: 3677 SIGMA Prod: 78095

http://metlin.scripps.edu/metabo_info.php?molid=3677



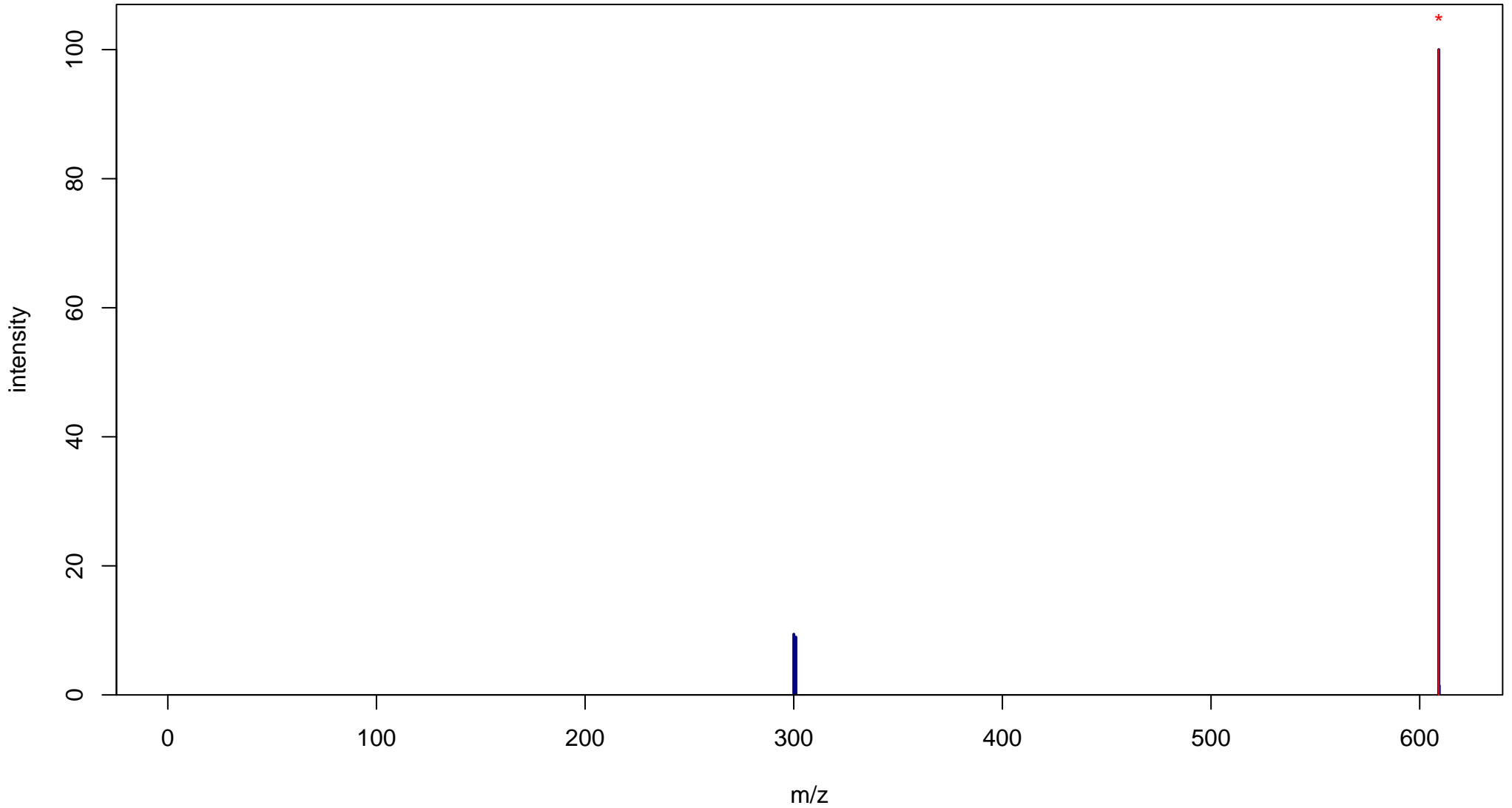
Rutin

Mass: 610.1534 Formula: C₂₇H₃₀O₁₆

mode: - collisionE: 20V

METLIN ID: 3677 SIGMA Prod: 78095

http://metlin.scripps.edu/metabo_info.php?molid=3677



Rutin

Mass: 610.1534 Formula: C₂₇H₃₀O₁₆

mode: - collisionE: 40V

METLIN ID: 3677 SIGMA Prod: 78095

http://metlin.scripps.edu/metabo_info.php?molid=3677

