

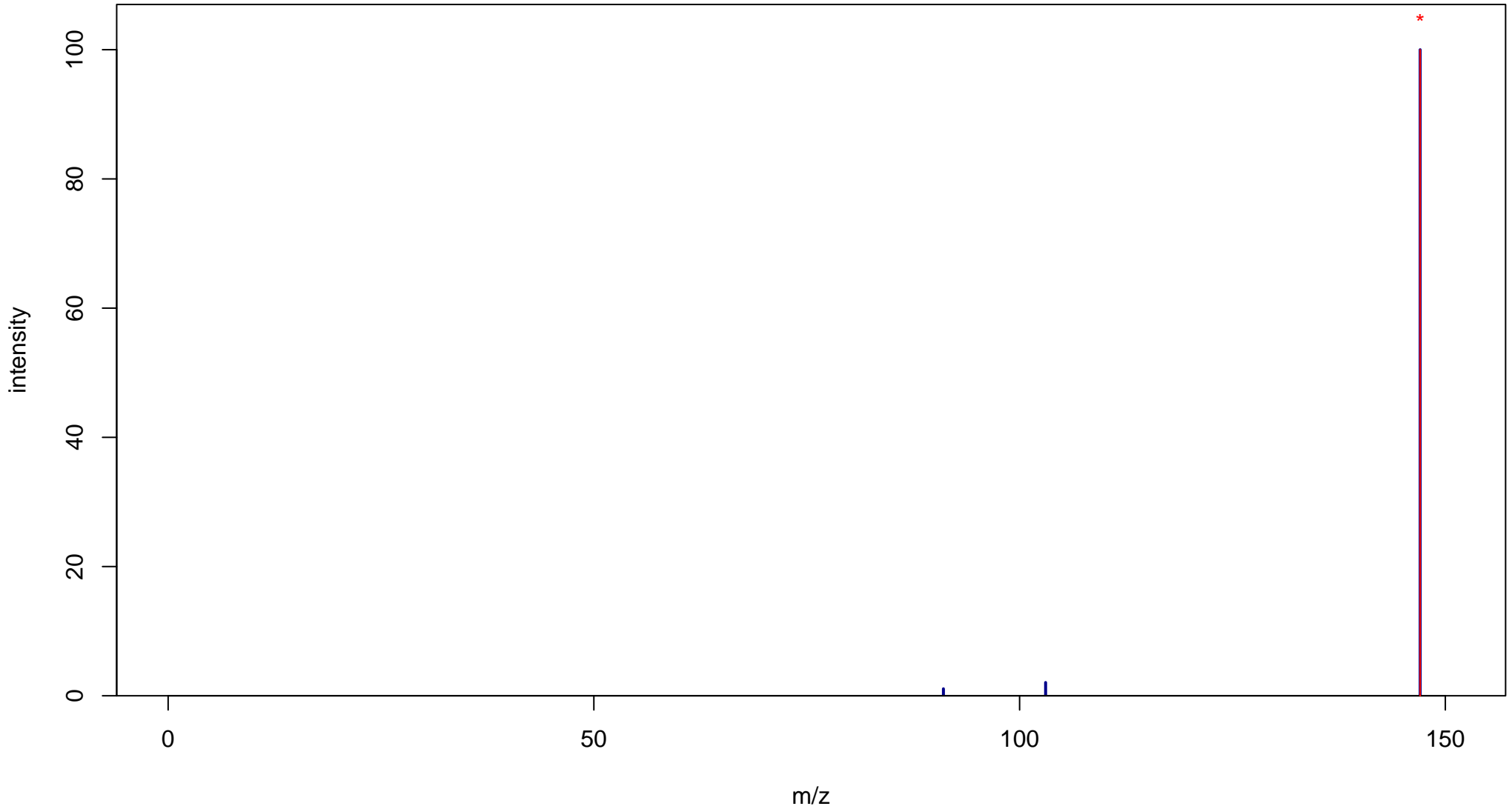
Coumarin(P)

Mass: 146.0368 Formula: C₉H₆O₂

mode: + collisionE: 0V

METLIN ID: 3525 SIGMA Prod: C4261

http://metlin.scripps.edu/metabo_info.php?molid=3525



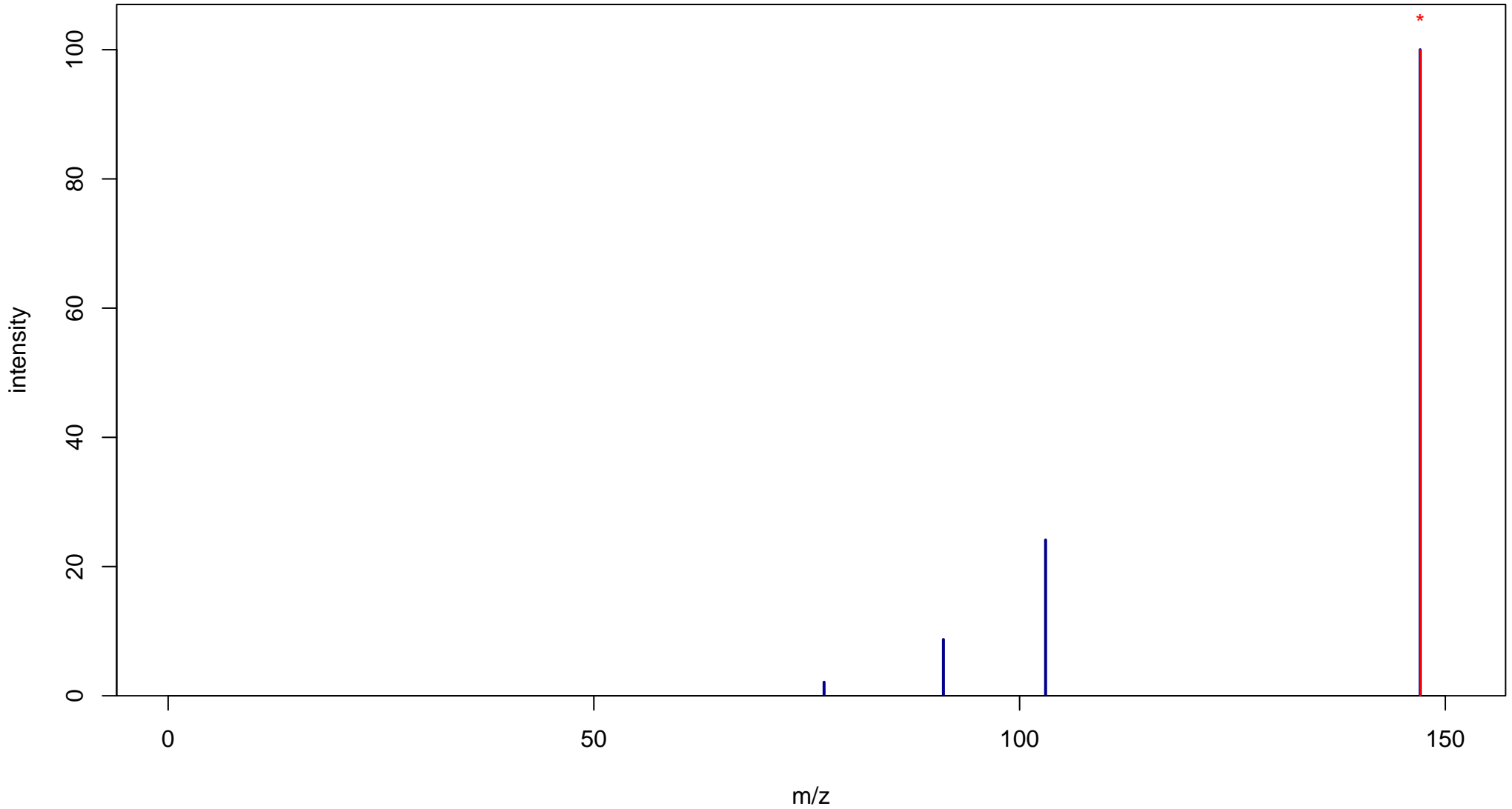
Coumarin(P)

Mass: 146.0368 Formula: C₉H₆O₂

mode: + collisionE: 10V

METLIN ID: 3525 SIGMA Prod: C4261

http://metlin.scripps.edu/metabo_info.php?molid=3525



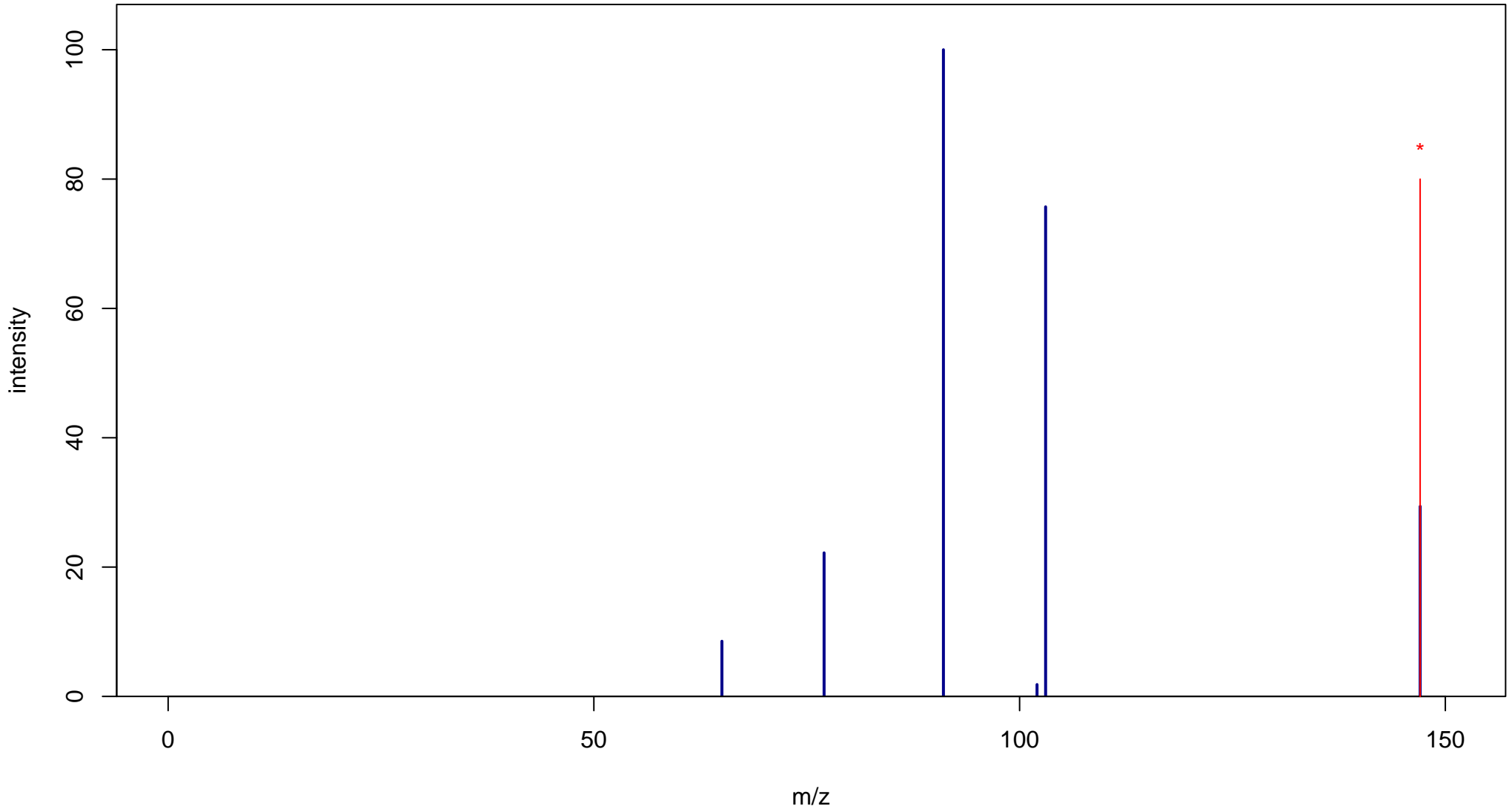
Coumarin(P)

Mass: 146.0368 Formula: C₉H₆O₂

mode: + collisionE: 20V

METLIN ID: 3525 SIGMA Prod: C4261

http://metlin.scripps.edu/metabo_info.php?molid=3525



Coumarin(P)

Mass: 146.0368 Formula: C₉H₆O₂

mode: + collisionE: 40V

METLIN ID: 3525 SIGMA Prod: C4261

http://metlin.scripps.edu/metabo_info.php?molid=3525

