

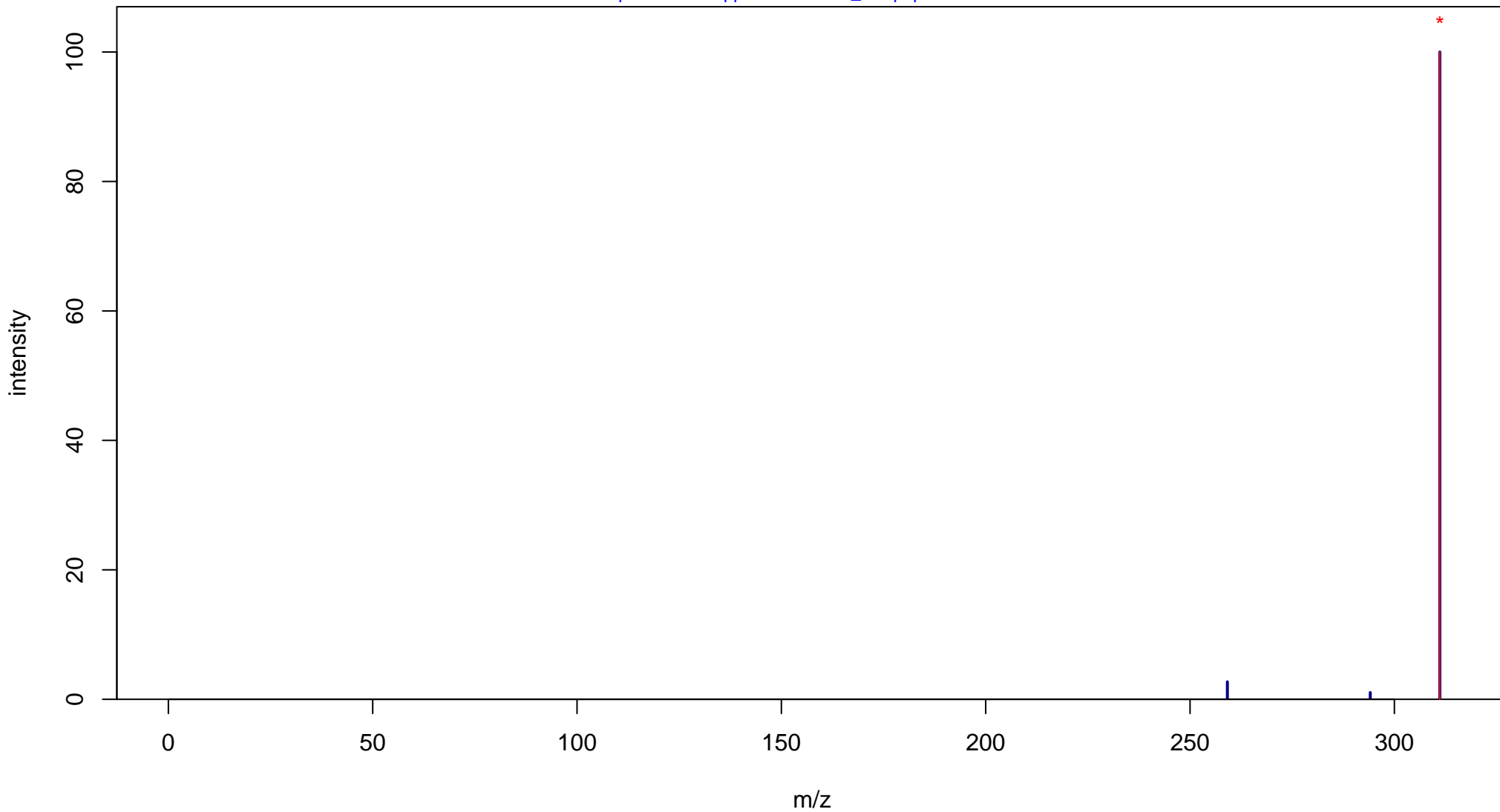
# Desloratadine

Mass: 310.1237 Formula: C<sub>19</sub>H<sub>19</sub>ClN<sub>2</sub>

mode: + collisionE: 0V

METLIN ID: 1022 SIGMA Prod: D1069

[http://metlin.scripps.edu/metabo\\_info.php?molid=1022](http://metlin.scripps.edu/metabo_info.php?molid=1022)



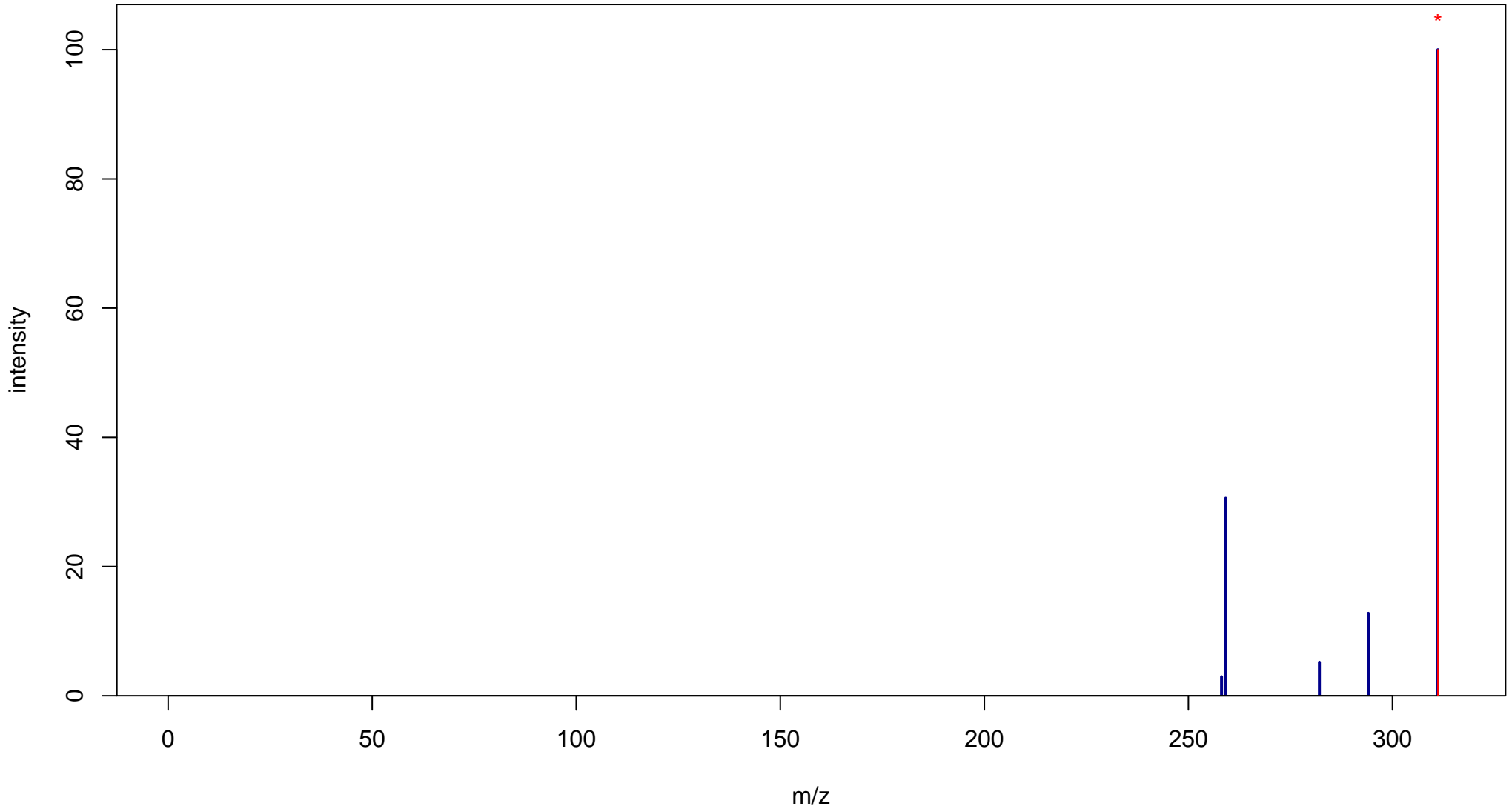
# Desloratadine

Mass: 310.1237 Formula: C<sub>19</sub>H<sub>19</sub>ClN<sub>2</sub>

mode: + collisionE: 10V

METLIN ID: 1022 SIGMA Prod: D1069

[http://metlin.scripps.edu/metabo\\_info.php?molid=1022](http://metlin.scripps.edu/metabo_info.php?molid=1022)



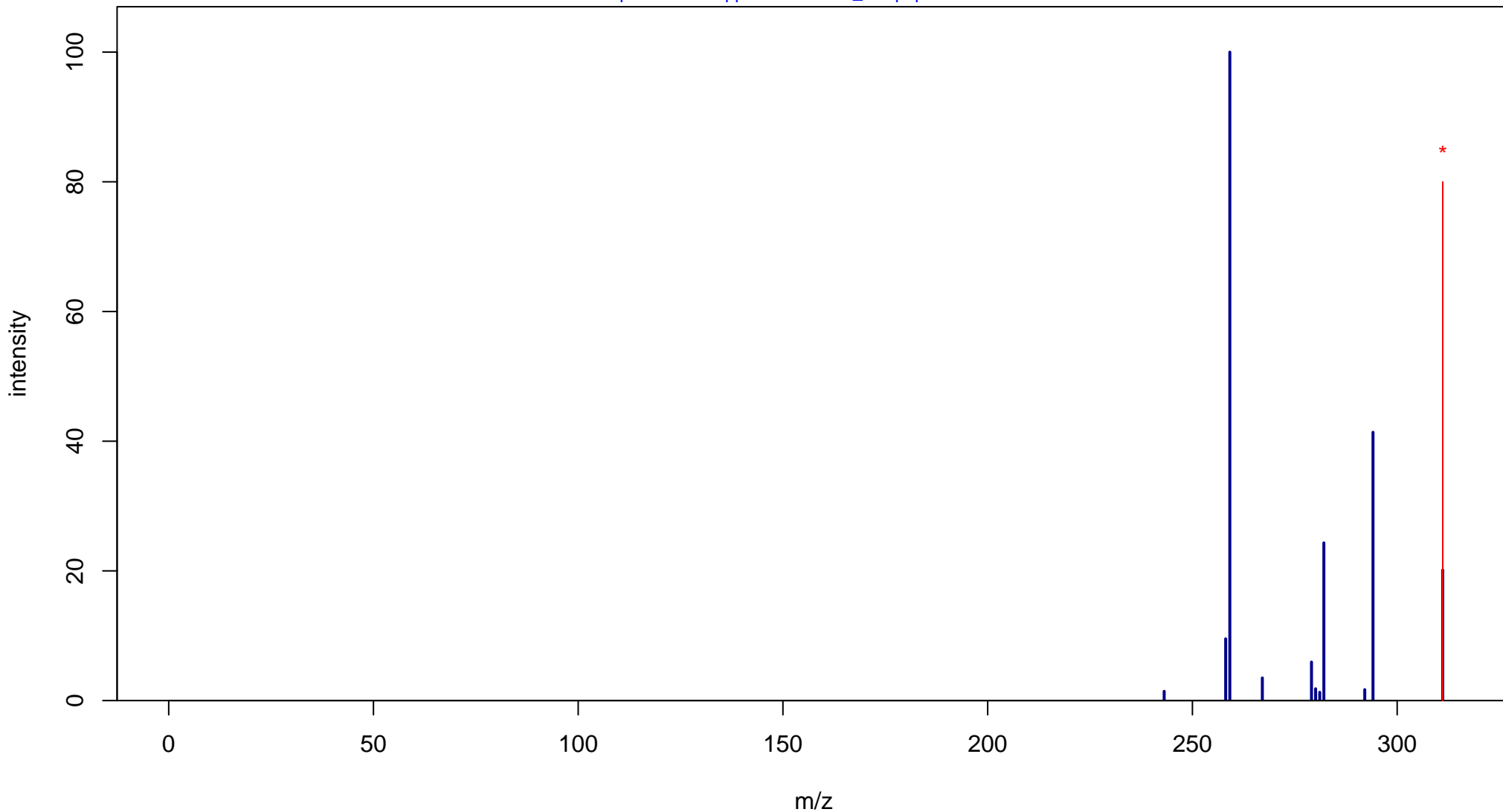
# Desloratadine

Mass: 310.1237 Formula: C<sub>19</sub>H<sub>19</sub>ClN<sub>2</sub>

mode: + collisionE: 20V

METLIN ID: 1022 SIGMA Prod: D1069

[http://metlin.scripps.edu/metabo\\_info.php?molid=1022](http://metlin.scripps.edu/metabo_info.php?molid=1022)



# Desloratadine

Mass: 310.1237 Formula: C<sub>19</sub>H<sub>19</sub>ClN<sub>2</sub>

mode: + collisionE: 40V

METLIN ID: 1022 SIGMA Prod: D1069

[http://metlin.scripps.edu/metabo\\_info.php?molid=1022](http://metlin.scripps.edu/metabo_info.php?molid=1022)

