

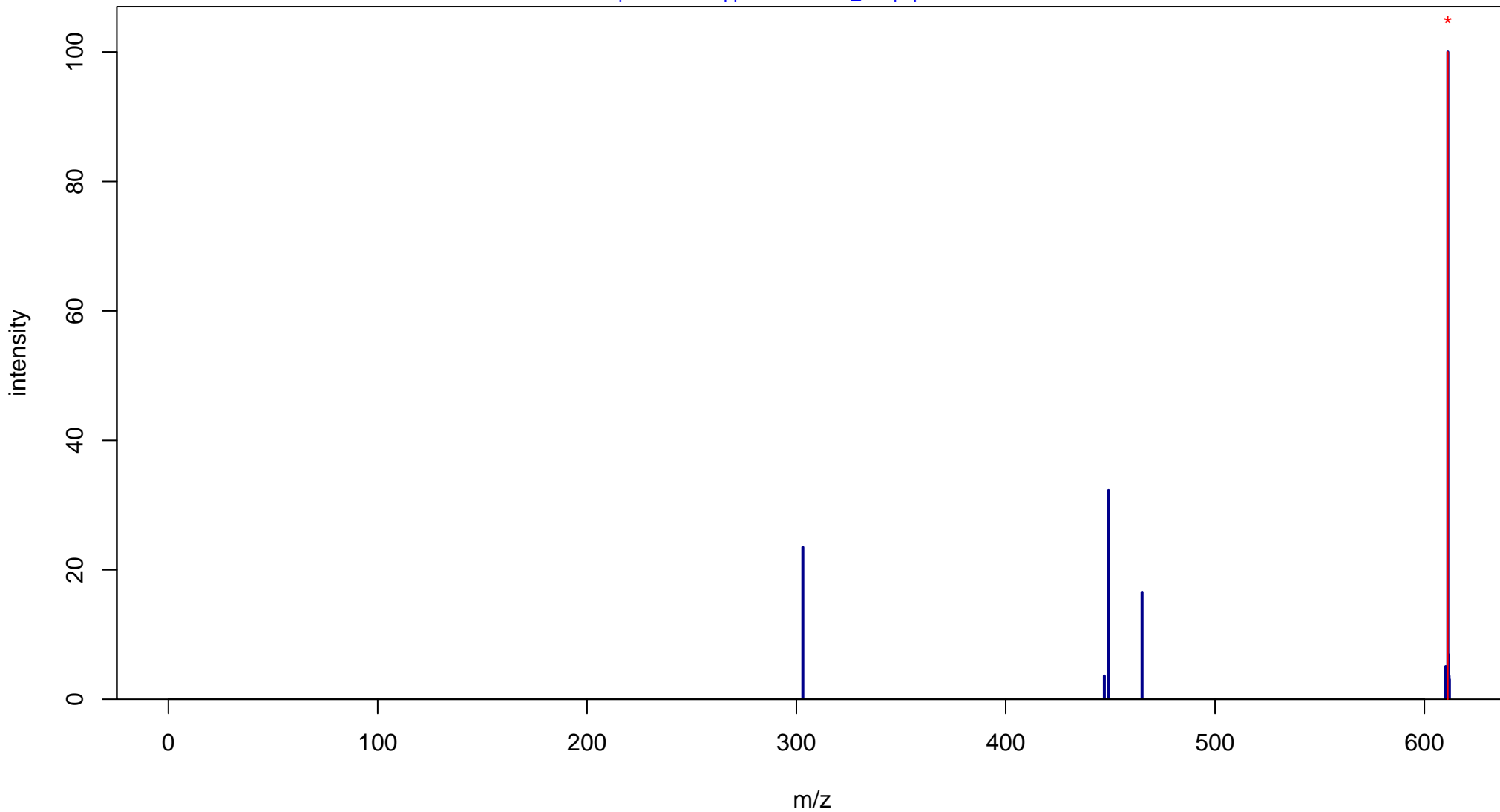
Hesperidin

Mass: 610.1898 Formula: C₂₈H₃₄O₁₅

mode: + collisionE: 0V

METLIN ID: 3678 SIGMA Prod: H5254

http://metlin.scripps.edu/metabo_info.php?molid=3678



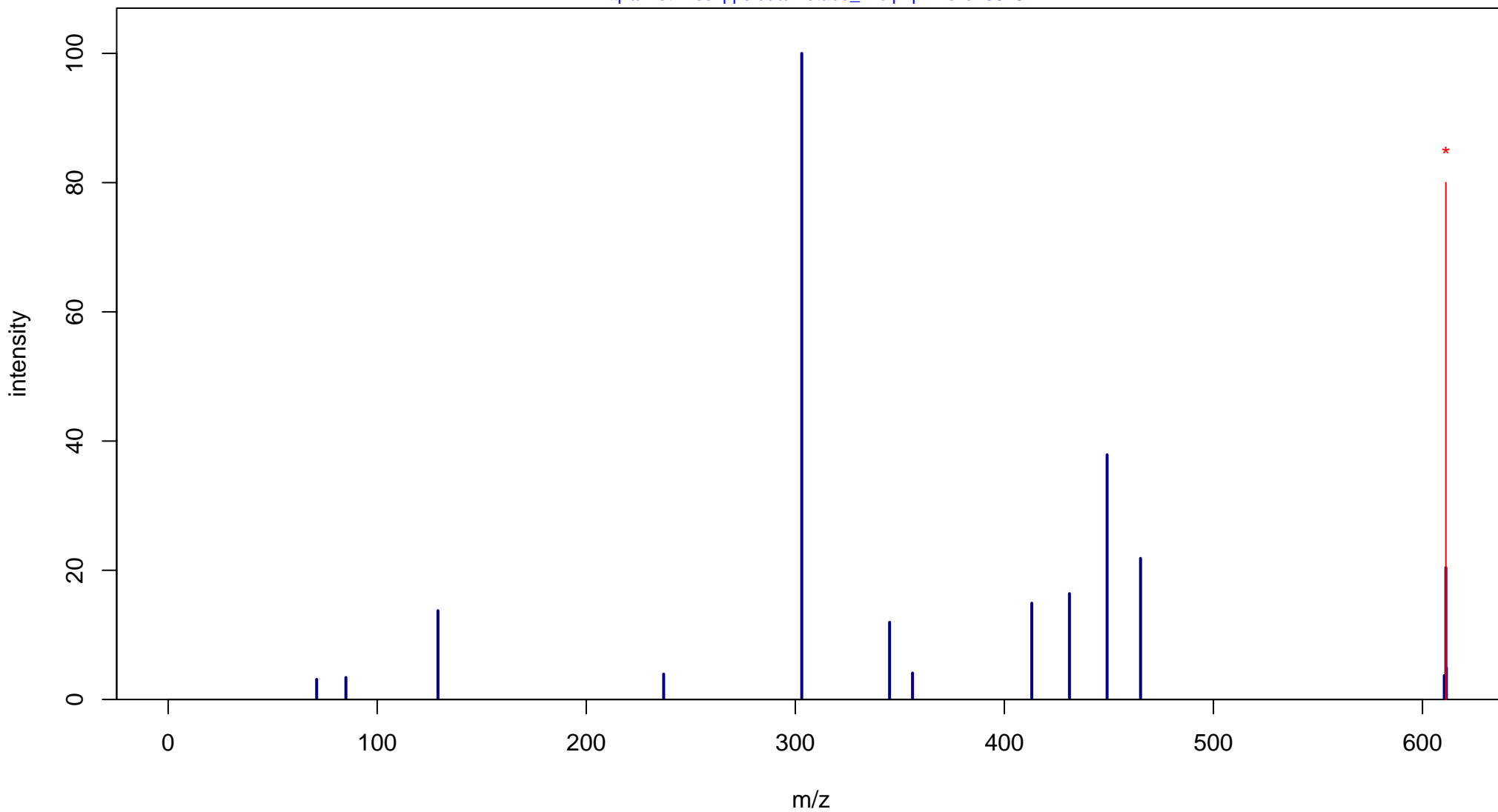
Hesperidin

Mass: 610.1898 Formula: C₂₈H₃₄O₁₅

mode: + collisionE: 10V

METLIN ID: 3678 SIGMA Prod: H5254

http://metlin.scripps.edu/metabo_info.php?molid=3678



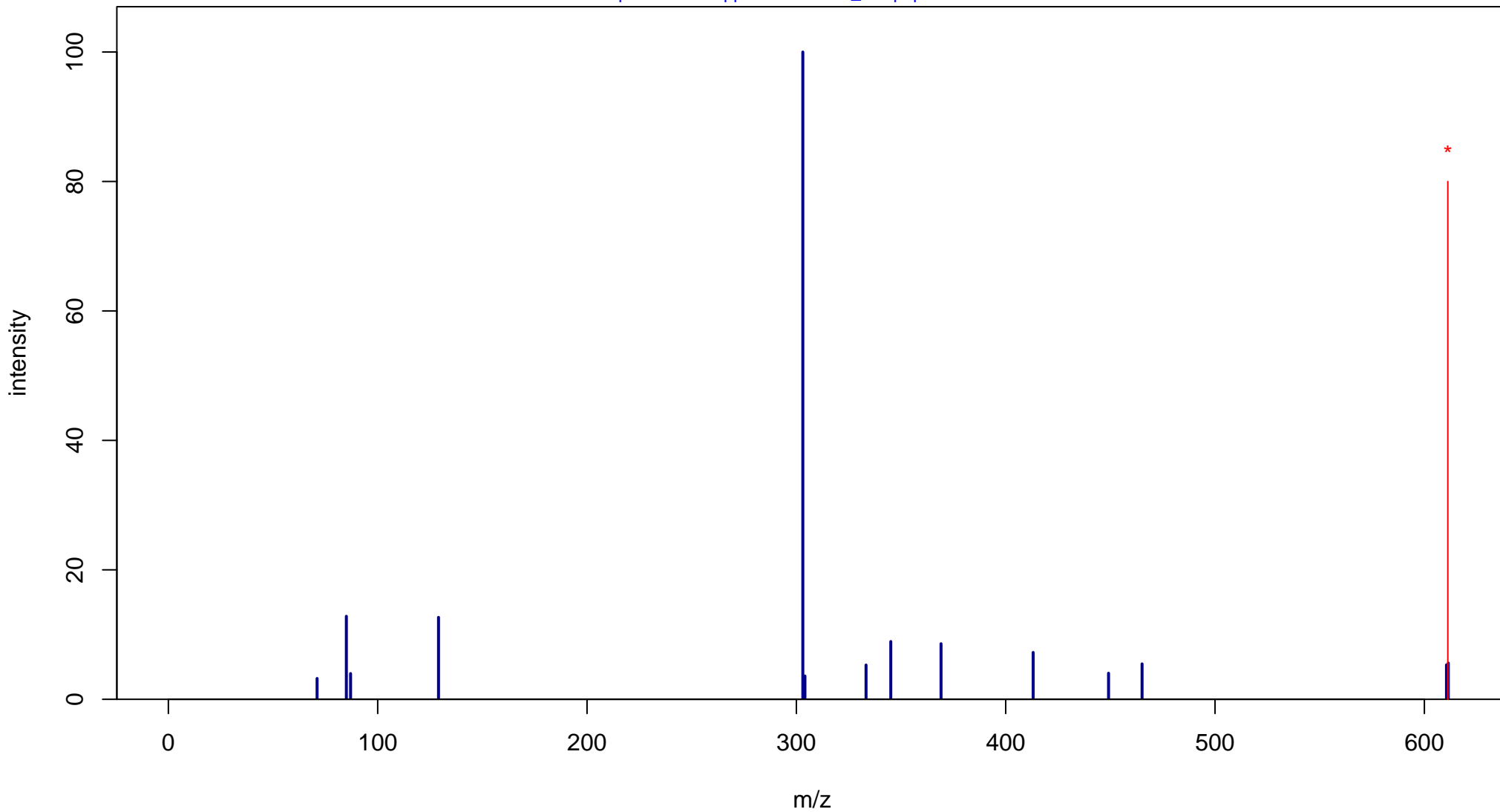
Hesperidin

Mass: 610.1898 Formula: C₂₈H₃₄O₁₅

mode: + collisionE: 20V

METLIN ID: 3678 SIGMA Prod: H5254

http://metlin.scripps.edu/metabo_info.php?molid=3678



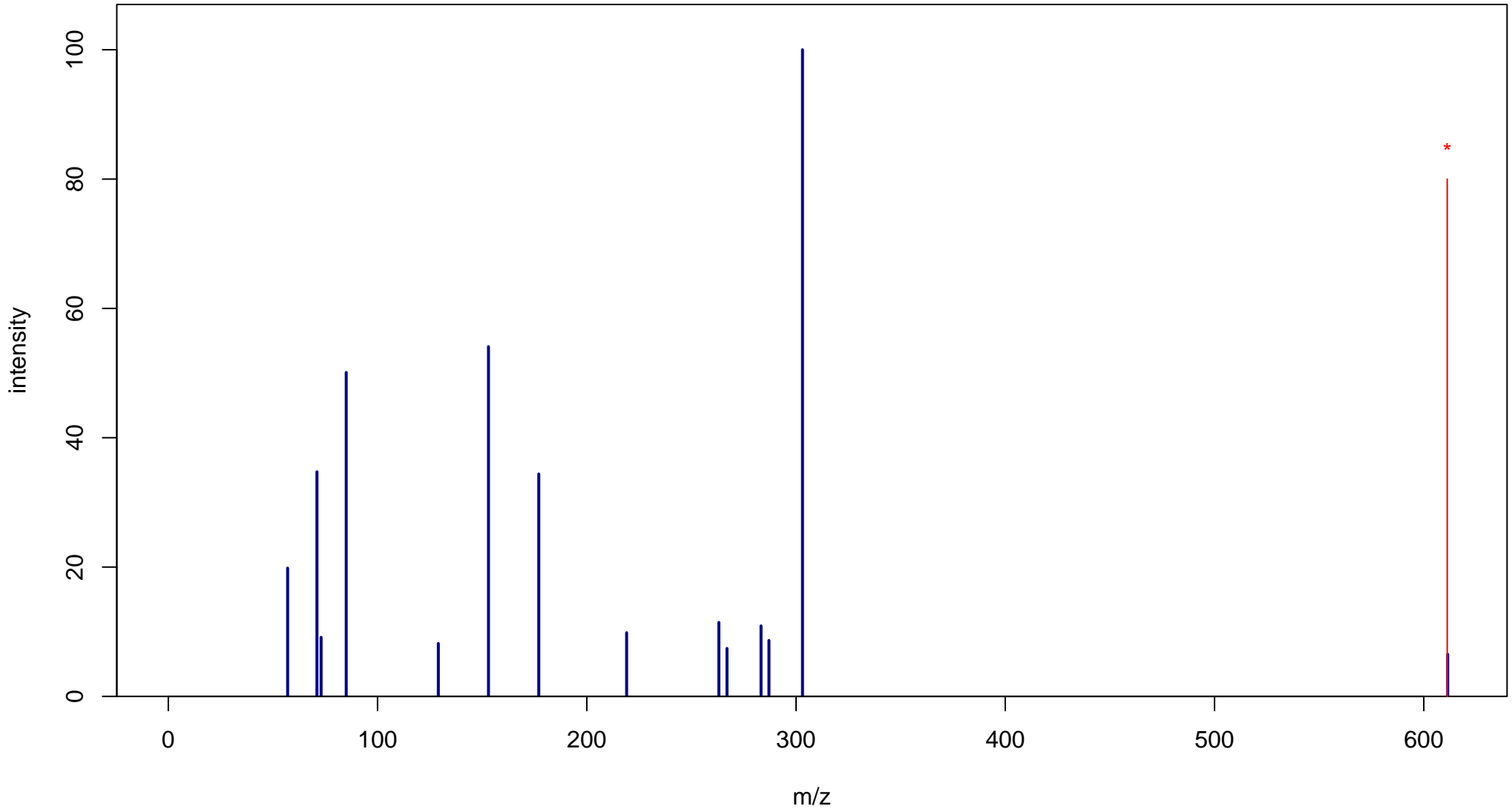
Hesperidin

Mass: 610.1898 Formula: C₂₈H₃₄O₁₅

mode: + collisionE: 40V

METLIN ID: 3678 SIGMA Prod: H5254

http://metlin.scripps.edu/metabo_info.php?molid=3678



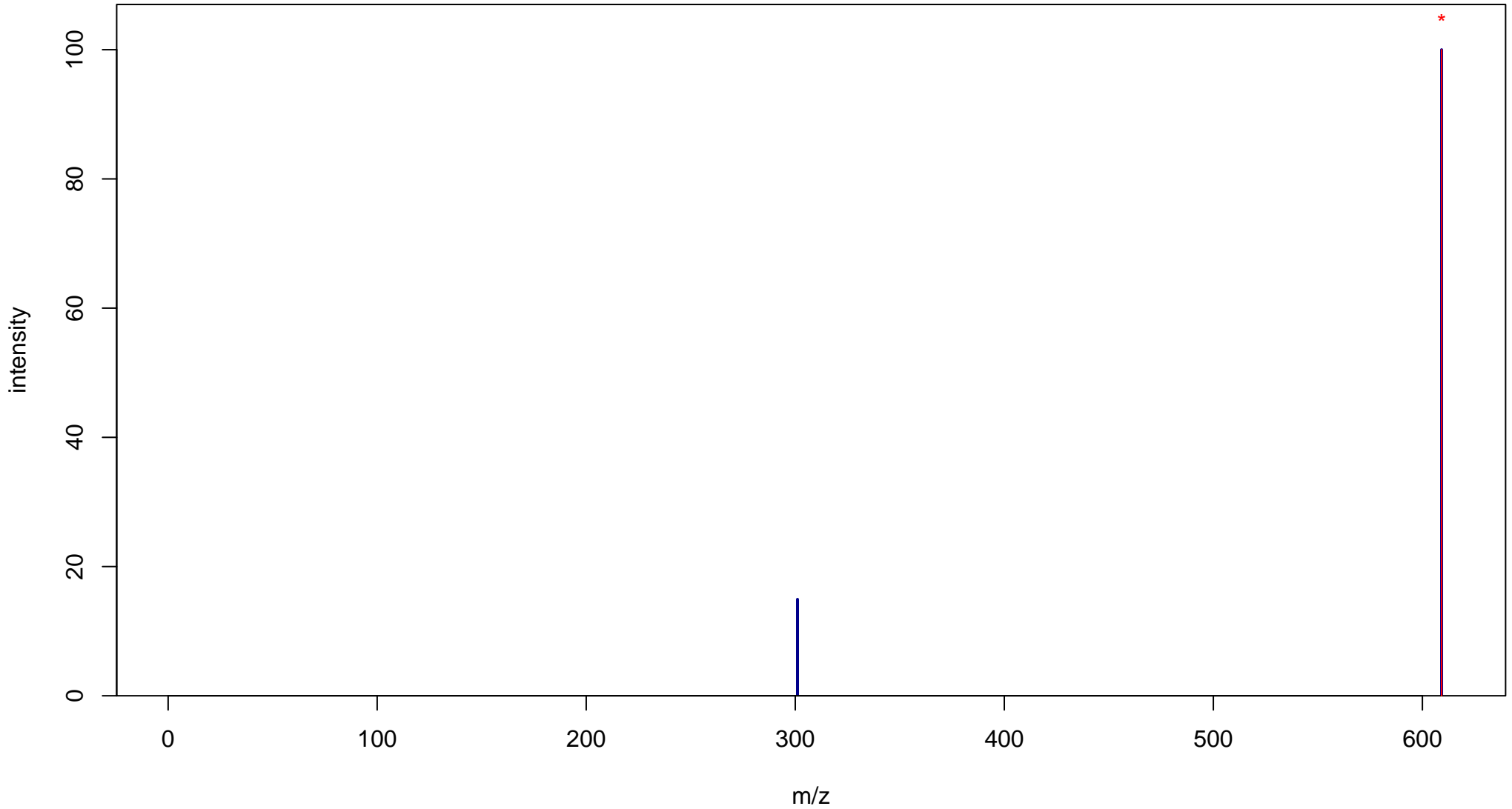
Hesperidin

Mass: 610.1898 Formula: C₂₈H₃₄O₁₅

mode: - collisionE: 0V

METLIN ID: 3678 SIGMA Prod: H5254

http://metlin.scripps.edu/metabo_info.php?molid=3678



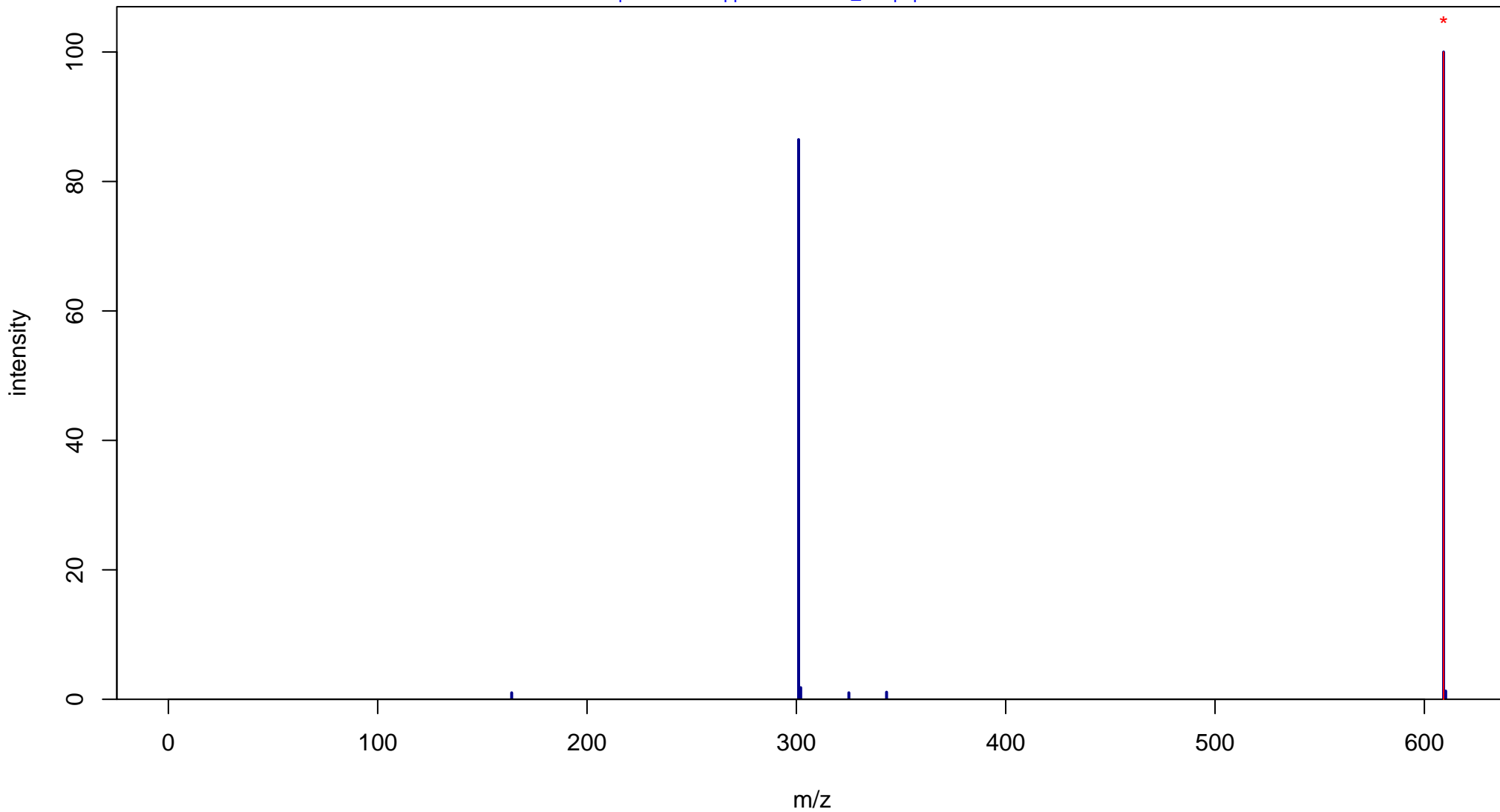
Hesperidin

Mass: 610.1898 Formula: C₂₈H₃₄O₁₅

mode: - collisionE: 10V

METLIN ID: 3678 SIGMA Prod: H5254

http://metlin.scripps.edu/metabo_info.php?molid=3678



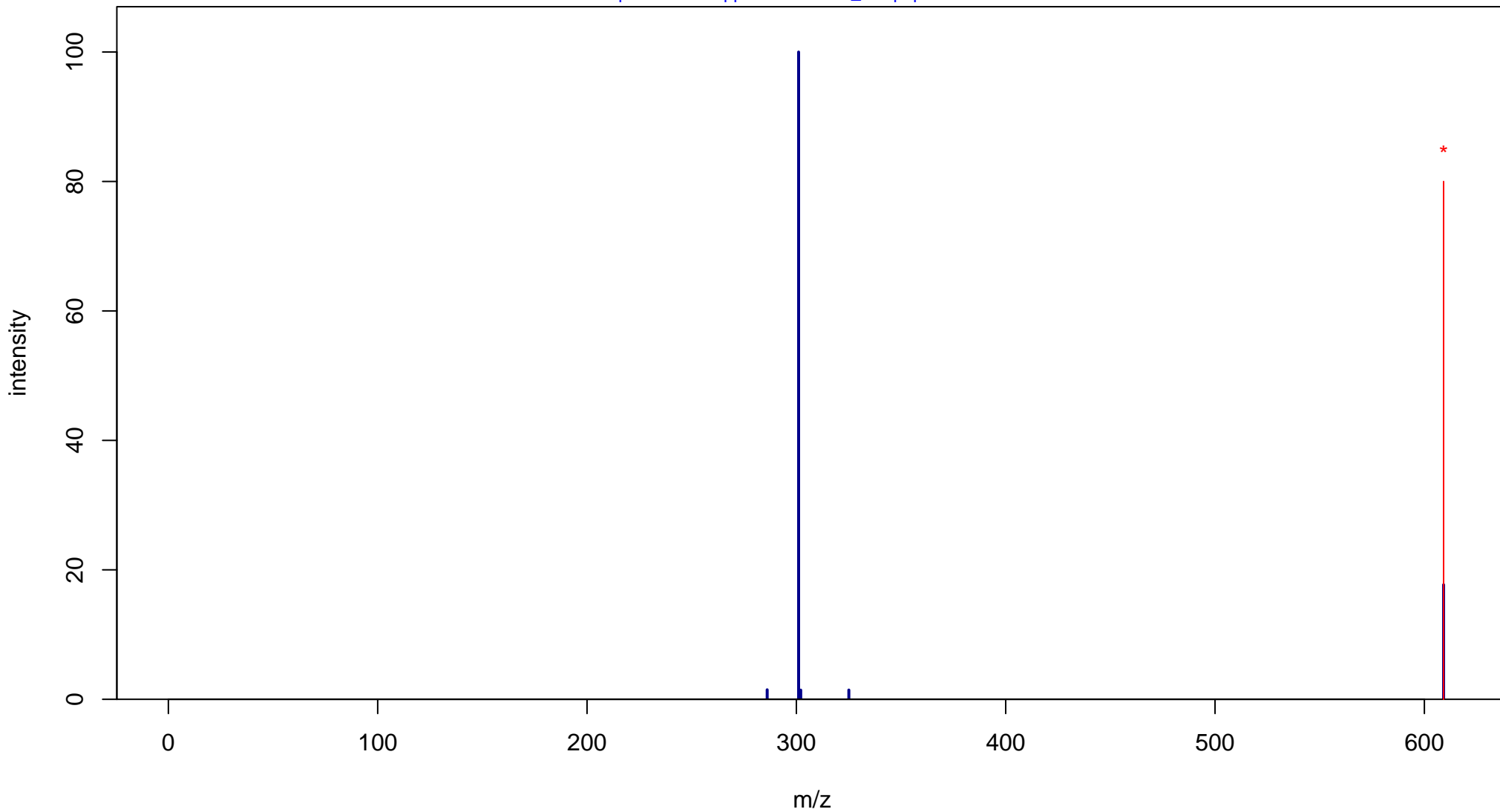
Hesperidin

Mass: 610.1898 Formula: C₂₈H₃₄O₁₅

mode: - collisionE: 20V

METLIN ID: 3678 SIGMA Prod: H5254

http://metlin.scripps.edu/metabo_info.php?molid=3678



Hesperidin

Mass: 610.1898 Formula: C₂₈H₃₄O₁₅

mode: - collisionE: 40V

METLIN ID: 3678 SIGMA Prod: H5254

http://metlin.scripps.edu/metabo_info.php?molid=3678

